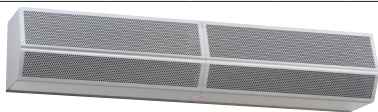
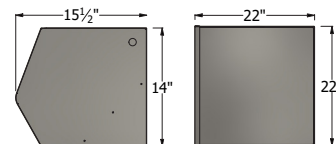


KEY FEATURES

- ETL and CSA listed to UL 507 (US) and CSA 22.2 (Canada)
- Overhead mounting (all) or wall mounting (EP2 only)
- Powder coated Titanium Silver
- EP2: Freight allowed in continental US (except gas fired)
- WMI/WMH: Freight not included

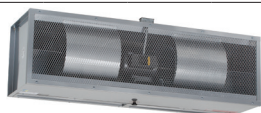


Temperature Control for Large Dock Doors, and Receiving Door Applications

EP2 (Extra Power 2) Series															
Unheated Model Number	Opening Width (in)	Opening Height (ft)	Unit Dimensions (in)		Air Velocity FPM @ Nozzle	Air Volume CFM @ Nozzle	Full Load Amps (Total FLA) 3 Phase			# of Motors	HP per Motor	Net Weight (lbs)	Accreditation Standards		
			Height	Depth			208V/230V (G)	460V (H)	575V (I)				Performance	Safety	Sanitation
EP2 - Mounting Heights: Environmental Separation (up to 16') and Insect Control (up to 14')															
EP296-2U*-TS	96	14-16	14	15 5/8	4800	9600	16.6/15.2	7.6	6.0	2	3	280	---	UL 507/CSA 22.2	---
EP2108-2U*-TS	108	14-16	14	15 5/8	4200	9600	16.6/15.2	7.6	6.0	2	3	295	---	UL 507/CSA 22.2	---
EP2120-2U*-TS	120	14-16	14	15 5/8	3840	9600	16.6/15.2	7.6	6.0	2	3	305	---	UL 507/CSA 22.2	---
EP2120-3U*-TS	120	14-16	14	15 5/8	5760	14400	24.9/22.8	11.4	9.0	3	3	390	---	UL 507/CSA 22.2	---
EP2144-3U*-TS	144	14-16	14	15 5/8	4800	14400	24.9/22.8	11.4	9.0	3	3	420	---	UL 507/CSA 22.2	---

* - Use corresponding letters in Electrical Data columns to complete the model numbers.

Note: Data above for 1725 RPM at 60 Hz, 50 Hz is 1425 RPM with 17% reduction in the performance data.



Temperature Control for Large Dock Door, and Heavy Industrial Applications with Mild Breeze

WM (Windstopping) Series															
WMI - Mounting Heights: Environmental Separation (up to 16') and Insect Control (up to 14')															
WMI96-2U*-TS	96	14-16	22	22	2614	7842	14.4/14.0	7.0	4.6	2	2	515	AMCA 211	CSA 22.2	---
WMI120-2U*-TS	120	14-16	22	22	3205	9474	28.4/21.2	10.6	4.6	2	3	610	AMCA 211	CSA 22.2	---
WMI144-2U*-TS	144	14-16	22	22	3009	13422	28.4/21.2	10.6	4.6	2	3	695	AMCA 211	CSA 22.2	---
WMI168-3U*-TS	168	14-16	22	22	2920	15060	42.6/31.8	15.9	6.9	3	3	880	AMCA 211	CSA 22.2	---
WMI192-4U*-TS	192	14-16	22	22	2614	15684	28.8/28.0	14.0	9.2	4	2	1030	AMCA 211	CSA 22.2	---
WMH - Mounting Heights: Environmental Separation (up to 20') and Insect Control (up to 18')															
							208V/230V (E/F)	460V (H)	575V (I)						
WMH96-2U*-TS	96	16-20	22	22	3732	10824	38/31.6	15.8	12.6	2	5	635	AMCA 211	CSA 22.2	---
WMH120-2U*-TS	120	16-20	22	22	4057	15014	38/31.6	15.8	12.6	2	5	735	AMCA 211	CSA 22.2	---
WMH144-2U*-TS	144	16-20	22	22	3816	17022	---/42.0	21.0	16.8	2	7	890	AMCA 211	CSA 22.2	---
WMH168-3U*-TS	168	16-20	22	22	3822	19845	57/47.4	23.7	18.9	3	5	1060	AMCA 211	CSA 22.2	---
WMH192-4U*-TS	192	16-20	22	22	3722	21648	76/63.2	31.6	25.2	4	5	1275	AMCA 211	CSA 22.2	---

* - Use corresponding letters in Electrical Data columns to complete the model numbers.

Note: Data above is for 60 Hz, 17% reduction in the performance data for 50 Hz.

NOTES

- Alternate voltage codes with FLA (Full Load Amp) data:
 - 380-415V/3Ø/50Hz (W) – 4.5A per motor (EP2), 6.6A per motor (WMH 5HP), 8.9A per motor (WMH 7HP). For WMI, consult factory.
- For total FLA, multiply motor FLA by # of motors.
- Ampacity (MCA) = total FLA x 1.25
- Sound levels (measured at 10' in an open field):
 - 1 motor unit = 76 dBA (EP2)
 - 2 motor unit = 79 dBA (EP2), 66 dBA (WMI), 69 dBA (WMH)
 - 3 motor unit = 81 dBA (EP2), 67 dBA (WMI), 70 dBA (WMH)
 - 4 motor unit = 68 dBA (WMI), 72 dBA (WMH)

MARS RECOMMENDED ACCESSORIES

- Controls [LINK](#)
 - MCP⁺-tU*, Control panel, 120V control voltage (* = Motor HP Code, † = # of Motors, * = Voltage Code)
 - MCP-24V, Low voltage control option (panel required)
 - MCP-TD, Adjustable time delay
 - BMS-303, BMS for monitoring and controlling (Motor control panel required with MCP-24V option)
- Mounting brackets [LINK](#)
 - B0004-TS, Adjustable mounting bracket set, 3 1/2" clearance (EP2 only)
 - B0008 to B0011, Extended wall mounting bracket, 10", 16", 19", 23" clearance respectively (EP2 only)
- Door limit switches [LINK](#)
 - 99-125, Industrial surface mounted magnetic switch
- Available heat types [LINK](#)
 - Electric, hot water, steam, and indirect gas fired



WMI/WMH only



EP2 Only



WMI/WMH only