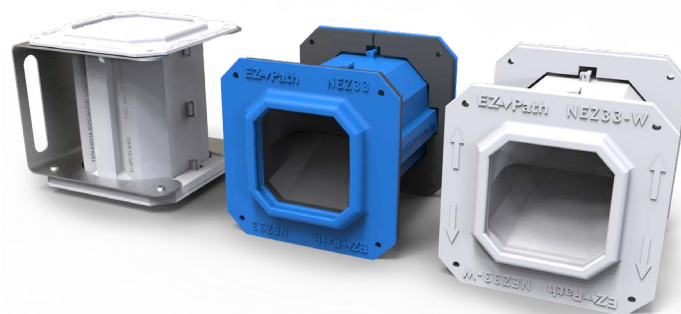


EZ Path® Series 33NEZ Smoke & Acoustical Pathway



EZ Path® Series 33NEZ Smoke & Acoustical Pathway is a pathway device designed to allow cables to penetrate non-fire-rated walls, floors and ceilings without the need for smoke sealing. This device features a built-in smoke sealing system that automatically adjusts to the amount of cables installed. Once installed in a barrier, cables can be easily added or removed at any time without the need to remove or reinstall caulking materials.

Its octagonal profile allows a maximum number of cables to be installed in a relatively small area. The pathway measures approximately 4-1/2 in (114 mm) x 4-1/2 in (114 mm) and is adjustable to accommodate wall and floor thicknesses between 4 in (102 mm) and 8 in (203 mm).



Applications

EZ Path® Series 33NEZ Smoke & Acoustical Pathway is designed for easy installation in non-fire-rated walls, floors and ceilings. Tested and approved cable capacities range from 0 to 100% visual fill.

EZ Path® Smoke & Acoustical Pathway provides exceptional cable capacity. A single unit installed in a wall exceeds the cable carrying capacity of a 4 in (102 mm) sleeve utilizing typical putty firestop systems (35% cable loading). Multiple ganged devices utilizing available duplex, or quad wall plates provide additional capacity or segregation of cables by use, type, installer or vendor as desired.



Specifications

All data, video, and communications cable bundles shall utilize an enclosed smoke and acoustical pathway device wherever said cables penetrate non-fire-rated walls and floors. The smoke and acoustical pathway shall contain a built-in sealing system and shall automatically adjust to the installed cable loading and shall permit cables to be installed, removed, or retrofitted without the need to remove or reinstall acoustical materials. The pathway shall provide an achievable STC rating of greater than or equal to the STC rating of the specific underlying construction per ASTM E90-09.

Specified Divisions

Division 9	09 80 00	Acoustic Treatments
Division 26	26 00 00	Electrical
Division 27	27 00 00	Communications

Limitations

This product has been designed to be safe with plastics. It has been used extensively and successfully with various types of plastic pipes, tubes, and plastic cable insulations. Variations in these materials, however, make it impossible to guarantee compatibility. STI strongly recommends that the user consults with the pipe, tubing, or cable manufacturer in question regarding any known sensitivities or potential restrictions before applying this product.

Features & Benefits

- Cable management by use, type and vendor
- Zero maintenance - easy moves, adds and changes
- Excellent acoustical performance; low smoke leakage ratings
- Easy to install - can be installed horizontally and vertically
- Retrofittable - retrofit kit comes split apart for old work
- Clean, engineered appearance
- Pathways can be ganged for additional capacity
- Pathway adjusts to accommodate wall, floor and ceiling thicknesses between 4 in (102 mm) and 8 in (203 mm)

EZ Path® Series 33NEZ Smoke & Acoustical Pathway



PERFORMANCE

Max Cable Loading (Visual Fill)

L Rating (CFM/Device)

0%

Less than 1

100%

Less than 2.5

Note: L Ratings Tested According to Air Leakage Test Procedure As Outlined in UL1479 without a Fire Test.

For use in non-fire-rated construction only.

Plenum Tested to UL2043

Sound Transmission Classification (STC)

61 (Relates to Specific Construction) (ASTM E 90-09)

PHYSICAL PROPERTIES

Shell Composition

Non-Halogenated, V-0 High Impact ABS/PC Thermoplastic

Seal & Curtain

Flame Retardant,
Low-Smoke Silicone Rubber

Cable Loading Area

6.7 sq in (43.2 sq cm)

Allowable Cable Fill

0% to 100%

In Service Temperature

-30°F (-34°C) to 130°F (54°C)

Storage Temperature

Less than 130°F (54°C)

Shelf Life

No Limit

Cable Installation

Cables may easily be added or removed at any time without removing or reinstalling the smoke and acoustical seal. Cables may be added individually or in bundles. Wrapping ends with a low-friction tape facilitates cable insertion. A self-adjusting cable throat automatically adjusts to accommodate the cable bundle as it passes through the pathway.

Maintenance

No maintenance of the pathway is normally required. The exterior seals of the device should be inspected before and after any modifications to the cable bundle.

System Selection

To find your firestop system or create a submittal, visit <https://systems.stifirestop.com/> to use System Search & Submittal Builder. You may also visit the [UL Online Certifications Directory/UL Product iQ™](#) for complete listings. (Firestop Systems).

EZ Path® Series 33NEZ Smoke & Acoustical Pathway



Technical Service

Specified Technologies Inc. provides toll free technical support to assist in product selection and appropriate installation design. UL System designs suitable for submittal or specification purposes are available on request. A complete library of technical information is provided at the company's website www.stifirestop.com including Safety Data Sheets (SDS's).

Precautionary Information

The use of this device is subject to local, regional and national codes. Consult the local Building Code Official or Authority Having Jurisdiction regarding any regional or local requirements that might influence the selection or use of this product. Note: For use in non-fire-rated construction only.

Availability

EZ Path® Products are available from Specified Technologies Inc. (STI) authorized distributors. For additional purchasing and technical information or for the names and locations of the nearest representative and/or distributor, regarding this and other Specified Technology products, please call 1-800-992-1180 or visit www.stifirestop.com.

ORDERING INFORMATION - NON-FIRE-RATED WALLS AND FLOORS

Catalog Number	UPC Number	Description	(UOM) Qty.	Case Qty.	Weight (Each)
NEZ33	730573111581	Smoke and Acoustical Pathway, (Device Only) with hardware	1	4	1.27 lbs (0.57 kg)
NEZ33-W	730573111666	Smoke and Acoustical Pathway White, (Device Only) with hardware	1	4	1.27 lbs (0.58 kg)
NEZ33R	730573111659	Smoke & Acoustical Pathway Retrofit Device	1	1	1.08 lbs (0.49 kg)
NEZDP233	730573111598	Smoke and Acoustical Pathway, Two Gang Kit (2 NEZ33 Pathways & 2 NEZP233 Two Gang Plates)	1	N/A	3.67 lbs (1.66 kg)
NEZDP433	730573111604	Smoke and Acoustical Pathway, Four Gang Kit (4 NEZ33 Pathways & 2 NEZP433 Four Gang Plates)	1	N/A	6.27 lbs (2.84 kg)
NEZP233	730573111611	Smoke and Acoustical Pathway, Two Gang Plate Kit (Plates Only)	1	N/A	0.91 lbs (0.41 kg)
NEZP433	730573111628	Smoke and Acoustical Pathway, Four Gang Plate Kit (Plates Only)	1	N/A	1.22 lbs (0.55 kg)

ORDERING INFORMATION - NON-FIRE-RATED CEILINGS

NEZ33CK2	730573111680	Smoke and Acoustical Pathway White, (Device Only) with Ceiling Kit	1	1	1.89 lbs (0.86 kg)
----------	--------------	--	---	---	-----------------------

IMPORTANT NOTICE: ALL STATEMENTS, TECHNICAL INFORMATION, AND RECOMMENDATIONS CONTAINED HEREIN ARE BASED UPON TESTING BELIEVED TO BE RELIABLE, BUT THE ACCURACY AND COMPLETENESS THEREOF IS NOT GUARANTEED.

STI TYPICALLY WARRANTIES ITS PRODUCTS FOR ONE FULL YEAR. FOR COMPLETE DETAILS OF OUR STANDARD WARRANTY, PLEASE VISIT WWW.STIFIRESTOP.COM/LEGAL/WARRANTY

MADE IN THE USA - © 2021 SPECIFIED TECHNOLOGIES INC.

