

Soft Overhead Brush

Series 5371



Soft Bristles

Soft bristles efficiently sweep fine particles like dust off of pipes



Adjustable Neck

Use the dial to adjust the angle of the head for a custom cleaning experience

Curved Head

Brush head curves around overhead pipes

This soft CIP brush is great for cleaning overhead pipes when used with a telescopic handle. Dirt falling from overhead equipment is a high risk, and the soft bristles help clean off dust-like particles from hard-to-reach spots. The neck is adjustable to be used at different angles.



Soft Overhead Brush

5371

■
3

Clean the tops of pipes with the Soft Overhead Brush. The soft bristles sweep away dust and fine particles. Adjust the angled head to provide a custom cleaning experience for any processing facility.

Specifications:

Length: 21.7"

Width: 10.6"

Height: 5.5"

FDA-Compliant Raw Material: Yes

Material: Polyester/SS/Polypropylene

Unit Weight: 1.21 lbs.

Bristle Type: Soft

Colors

When ordering, add the color digit to the base part number to denote color.



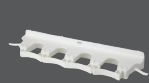
Fully updated product specifications are available at Vikan.com.

The Color-Coding System

Remco and Vikan® brands offer an integrated color-coding system to help mitigate the risk of cross-contamination in food processing facilities. With an array of color-coded tools and storage brackets, and years of experience building effective color-coding systems, the experts at Remco Products Corporation can help you effectively apply color-coding to divide and identify different zones or processing tasks. As a result, workers can more easily comply with material handling and hygienic cleaning procedures to maintain stringent food safety standards.



Please see the full-line catalog for a complete list of Remco™ and Vikan® products.



Brackets



Brooms



Brushes



Shovels



Scrapers



Squeegees



Tubs



Pails

Remco Products Corporation

4735 West 106th Street
Zionsville, Indiana 46077

PHONE: 317.876.9856 | FAX: 800.585.8619

www.remcoproducts.com

