

# Angled Hand Scrub Brush

Series 3890



## Hygienic Design

Externally angled facet design minimizes areas where contamination can accumulate

## Short, Stiff Bristles

Scrub stubborn and stuck-on food soils with maximum power

## Long, Angled Bristles

Easily reach into corners for thorough cleaning



This is a handheld scrubbing brush that is effective at cleaning flat surfaces and into corners.



## Angled Hand Scrub Brush

3890



This fully color-coded hand scrub brush has stiff angled bristles to scrub tables, conveyor, belts, cutting boards, buckets, and many other types of equipment. At one end of the brush, you have harder bristles, which help remove stubborn dirt.

### Specifications:

Length : 8"  
 Height : 3"  
 FDA Compliant Raw Material : Yes  
 Block Material : Polypropylene  
 Bristle Material : Polyester  
 Unit Weight : 0.5 lbs.

### Colors

When ordering, add the color digit to the base part number to denote color.



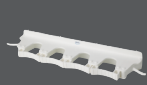
Fully updated product specifications are available at [Vikan.com](http://Vikan.com).

## The Color-Coding System

Remco and Vikan® brands offer an integrated color-coding system to help mitigate the risk of cross-contamination in food processing facilities. With an array of color-coded tools and storage brackets, and years of experience building effective color-coding systems, the experts at Remco Products Corporation can help you effectively apply color-coding to divide and identify different zones or processing tasks. As a result, workers can more easily comply with material handling and hygienic cleaning procedures to maintain stringent food safety standards.



Please see the full-line catalog for a complete list of Remco™ and Vikan® products.



Brackets



Brooms



Brushes



Shovels



Scrapers



Squeegees



Tubs



Pails

### Remco Products Corporation

4735 West 106th Street  
 Zionsville, Indiana 46077

PHONE: 317.876.9856 | FAX: 800.585.8619

[www.remcoproducts.com](http://www.remcoproducts.com)

