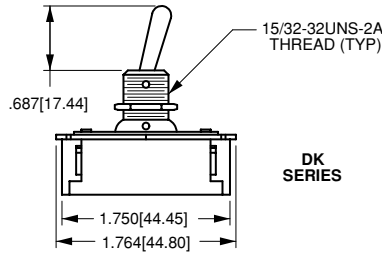
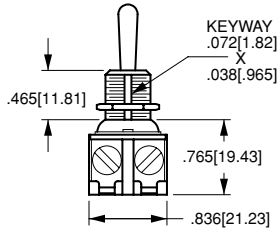


## DK/EK-Series Heavy Duty Toggle Switches

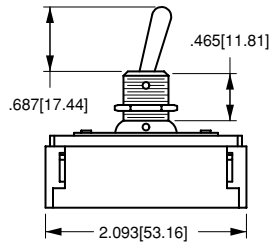
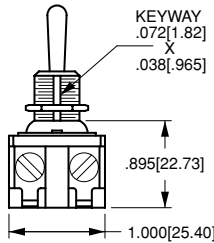


The switch that can handle your heavy duty requirements. Single or double pole with wire lead or screw terminations, and ratings to 20A 125V 10A 250V, the ac/dc DK/EK-Series is the most heavy duty toggle switch in the Carling line. Its sturdy metal construction and stiff actuation force will withstand the abuses of virtually any stringent application. The quick make/quick break contact mechanism is ideal for high voltage DC applications. The DK/EK-Series has long been a staple of the Industrial Motor control and General Purpose market segments.

**Dielectric Strength**  
*UL/CSA:* 1000V - live to dead metal parts & opposite polarity  
**Electrical Life**  
 25,000 cycles  
**Mechanical Life**  
 100,000 cycles  
**Operating Temperature**  
 0°F to 150°F (-17.8°C to +65.6°C)



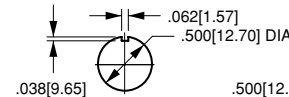
DK SERIES



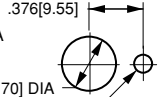
EK SERIES



MOUNTING HOLE



WITH KEYWAY



WITH LOCKING RING

WIRE LEAD	SCREW (ASSEMBLED)
TERMINAL TYPE	

**DK284 - 73**

<sup>1</sup> Base Part Number

<sup>2</sup> Actuator Style

**1 BASE PART NUMBER: SERIES/POLES/CIRCUITRY/RATING/TERMINATION**

**8A 250V, 16A 125V, 1 HP 125-250V**

screw terminals      wire leads

**Single Pole**

ON-NONE-OFF    **DA284**      **DA285**

**Double Pole**

ON-NONE-OFF    **DK284**      **DK285**

**10A 250V, 20A 125V, 1 1/2 HP 125-250V**

screw terminals      wire leads

**Single Pole**

ON-NONE-OFF    **EA204**      **EA205**

**Double Pole**

ON-NONE-OFF    **EK204**      **EK205**

**2 ACTUATOR STYLE<sup>1</sup>**

**BALL STYLE TOGGLE**

unsealed    toggle length    bushing length  
**32**            0.500            0.343

**BAT STYLE TOGGLE**

unsealed    toggle length    bushing length  
**73**            0.687            0.465

NOTES

<sup>1</sup> Additional toggle lengths available. Consult factory for details.