

Description

Tilting Work Stands reduce ergonomic strain by positioning your work at the precise height and angle you select. Table surface can be set at various heights and angles to reduce strain and overexertion. Four swivel casters make the work stand extremely easy to maneuver. Tilting Work Stands should be used on flat, even surfaces only.

Safety Information

Tilting Work Stands should be moved, adjusted, and maintained only when there is no load present. Load should always be within working load limit of the stand and always placed on the appropriate area of the tilting table surface. Tilting Work Stands should only be used on solid, flat, even surfaces.



Operation

1. Remove any existing load from Table Surface (see parts breakout #38) before adjusting table height.
2. Release Retention Screw (parts breakout #24).
3. To lower table surface, turn Lever (parts breakout #19) and table will lower. If table lowering speed is too fast or slow, adjust air valve (parts breakout #10) to desired lowering speed. Never lower the table with a load present. Use caution when lowering the work table.
4. To raise table surface, first release Retention Screw (parts breakout #24) and then lift table to desired height.
5. Retighten Retention Screw.

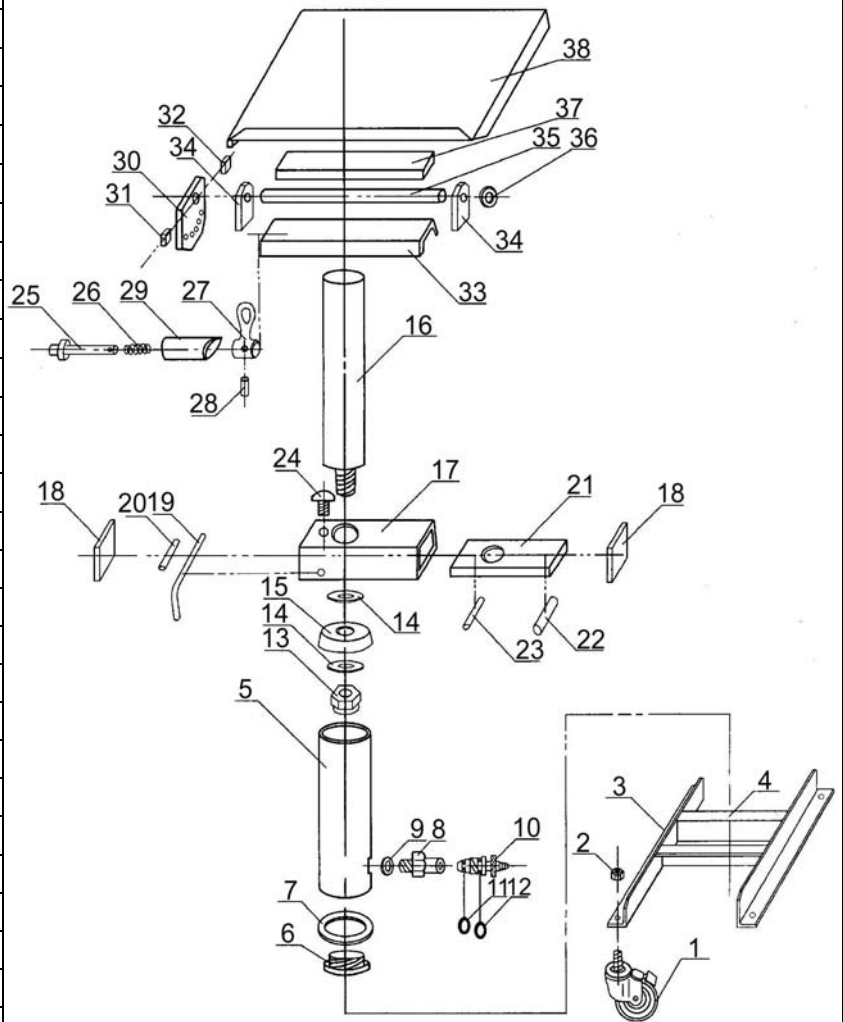
| Stock Number | Maximum Capacity* | Stand Height | Angle of Table | Replacement Parts** | Breakout Item Nos. Included | Replacement Part # (each) |
|--------------|-------------------|----------------|----------------|-------------------------------|-----------------------------|---------------------------|
| 2WTR3 | 330 lbs. | 20-27.5 inches | 0° - 40° | 3" Polyurethane Swivel Caster | 1,2 | MH2WTR301 |
| | | | | Valve Kit | 8 - 12 | MH2WTR302 |
| 2WTR4 | 330 lbs. | 28-42 inches | 0° - 40° | 3" Polyurethane Swivel Caster | 1,2 | MH2WTR301 |
| | | | | Valve Kit | 8 - 12 | MH2WTR302 |

*** Warning: Maximum load capacity rating is for evenly distributed load.**

**** Not all parts are offered through the parts program.**

Product Breakout Diagram

| Item No. | Description | QTY |
|----------|---------------------|-----|
| 1 | Caster** | 4 |
| 2 | Locknut** | 4 |
| 3 | Angle Iron* | 2 |
| 4 | Angle Iron* | 2 |
| 5 | Cylinder* | 1 |
| 6 | Plug* | 1 |
| 7 | Copper washer* | 1 |
| 8 | Valve base** | 1 |
| 9 | Copper washer** | 1 |
| 10 | Valve core** | 1 |
| 11 | O-ring** | 1 |
| 12 | O-ring** | 1 |
| 13 | Nut* | 1 |
| 14 | Washer* | 2 |
| 15 | Leather Cup* | 1 |
| 16 | Column* | 1 |
| 17 | Locking Base* | 1 |
| 18 | Cover* | 2 |
| 19 | Lever* | 1 |
| 20 | Mandrel* | 1 |
| 21 | Self-locking Plate* | 1 |
| 22 | Supporting Rod* | 1 |
| 23 | Block Rod* | 1 |
| 24 | Retention screw* | 1 |
| 25 | Locating Pin* | 1 |
| 26 | Compression Spring* | 1 |
| 27 | Lever* | 1 |
| 28 | Pin* | 1 |
| 29 | Pin base* | 1 |
| 30 | Graduated plate* | 1 |
| 31 | Left stopper* | 1 |
| 32 | Right stopper* | 1 |
| 33 | Supporting Rack* | 1 |
| 34 | Lateral Plate* | 2 |
| 35 | Shaft* | 1 |
| 36 | Washer* | 1 |
| 37 | Cushion* | 1 |
| 38 | Table Surface* | 1 |



* Indicates part not stocked
 ** Indicates part is only available as part of a kit