

NEED a LIFT?

IMI's lift magnets won't leave you hanging. **MAG-MATE**



BASICLIFT™

CREATIVE LIFT®



POWERLIFT®



VERSALIFT™

PERMANENT CERAMIC LIFT MAGNETS

BASICLIFT™ **MAG-MATE®**

IMI's BasicLift™ is a powerful, no frills permanent ceramic lift magnet perfect for basic flat steel lifting. Featuring a lightweight and durable Stainless Steel design, the BasicLift™ has a full width cam to release the magnet from the steel surface and a tall lift lug for easy use with crane hooks and slings.

The BasicLift™ offers a good value for your dollar with strong lifting capacity and basic lifting features.

Features

- Heat resistant up to 300°F (148°C)
- Lightweight Design
- Durable Stainless Steel Casing
- Large Lift Lug
- Full Width Cam Release
- 2:1 Design Factor
- USA M.A.D.E.™



Model No.	Lift - lbs (kg)	Height (in)	Overall			Ht. (in)	Magnet		Bail Opening		Wt. (lbs)
			Width (in)	Length (in)	Handle (in)		Wd. (in)	Ln. (in)	Height (in)	Width (in)	
4DMP8	400 (181)	5-1/2	6-1/2	6-1/2	12	1-5/8	3	4	2-1/4	3	11
4DMP9	1000 (453)	5-1/2	6-1/2	9-1/2	12	1-5/8	3	6-1/2	2-1/4	3	17
4DMR1	1500 (680)	5-1/2	6-1/2	13-3/4	12	1-5/8	3	10	2-1/4	3	24

Lifting Value in lbs (kg) & *Maximum Sheet Length Due To Sag For Material Thickness For Single Magnet Use

Model No.	3/16" (6' Length)	1/4" (6' Length)	3/8" (8' Length)	1/2" (8' Length)	3/4" (8' Length)	1" (10' Length)	3" (10' Length)
4DMP8	375 (170)	400 (181)	400 (181)	400 (181)	400 (181)	400 (181)	400 (181)
4DMP9	725 (328)	800 (362)	875 (396)	975 (442)	1000 (453)	1000 (453)	1000 (453)
4DMR1	875 (396)	1000 (453)	1400 (635)	1400 (635)	1500 (680)	1500 (680)	1500 (680)

NOTE: Holding Values for the BasicLift™ Magnets are stated at 50% of the actual value. We recommend when lifting sheets over 8', use 2 or more lifts on a spreader bar to prevent sheet flexing, sagging or peel-off. Thin material is susceptible to magnetic bleed through, resulting in two sheets being lifted at once. *These maximum sheet lengths are selected due to the sag characteristics of the specified sheet. The item to be lifted must cover the entire length and width of the magnetic poles to properly engage and release the part.

CREATIVE LIFT® **MAG-MATE®**

Permanent lift magnets are ideal for handling steel plates, die castings, forgings, etc. They eliminate the need for clamping devices, slings or chains. One person can perform operations previously calling for two or more people.

Features

- Patented Non-Marring Roller Cam Release will easily release parts without gouging your valuable materials (U.S. Patent: 6,471,273 B1)
- Spring return handle
- Less torque required to release load
- "Jack Screw", Secondary Release
- RFID Enabled
- Lift capacity clearly stated on magnet
- Durable Stainless Steel Casing
- Heat Resistant up to 300°F (148°C)
- 3:1 Design Factor
- USA M.A.D.E.™
- CONFORMS TO ASME B30.20 STANDARDS



Model No.	Lift - lbs (kg)	Height (in)	Overall			Ht. (in)	Magnet		Bail Opening		Wt. (lbs)
			Width (in)	Length (in)	Handle (in)		Wd. (in)	Ln. (in)	Height (in)	Width (in)	
2RUZ6	400 (181)	6-3/4	7-1/4	7-3/4	16	2-1/2	6-1/2	4	2-1/4	3	21
2RUZ7	1000 (453)	6-3/4	7-1/4	10-3/4	16	2-1/2	6-1/2	7	2-1/4	3	33
2RUZ8	1500 (680)	6-3/4	7-1/4	14-3/4	16	2-1/2	6-1/2	10-1/2	2-1/4	3	46
2RUZ9	2200 (998)	7	10-1/2	15	16	2-1/2	9-3/4	11-1/4	2-1/4	3	69
2RVA1	3000 (1360)	7	10-1/2	19-1/4	16	2-1/2	9-3/4	15-1/4	2-1/4	3	92

Lifting Value in lbs (kg) & *Maximum Sheet Length Due To Sag For Material Thickness For Single Magnet Use

Model No.	3/16" (6' Length)	1/4" (6' Length)	3/8" (8' Length)	1/2" (8' Length)	3/4" (8' Length)	1" (10' Length)	3" (10' Length)
2RUZ6	400 (181)	400 (181)	400 (181)	400 (181)	400 (181)	400 (181)	400 (181)
2RUZ7	600 (272)	900 (408)	1000 (453)	1000 (453)	1000 (453)	1000 (453)	1000 (453)
2RUZ8	800 (362)	1000 (453)	1500 (680)	1500 (680)	1500 (680)	1500 (680)	1500 (680)
2RUZ9	800 (362)	1064 (482)	1725 (782)	2000 (907)	2200 (998)	2200 (998)	2200 (998)
2RVA1	800 (362)	1100 (498)	1800 (816)	2700 (1224)	3000 (1360)	3000 (1360)	3000 (1360)

NOTE: Holding Values for the Creative Lift® Magnets are stated at 33% of the actual value. We recommend when lifting sheets over 8', use 2 or more lifts on a spreader bar to prevent sheet flexing, sagging or peel-off. Thin material is susceptible to magnetic bleed through, resulting in two sheets being lifted at once. *These maximum sheet lengths are selected due to the sag characteristics of the specified sheet. The item to be lifted must cover the entire length and width of the magnetic poles to properly engage and release the part.

PERMANENT RARE EARTH LIFT MAGNETS

POWERLIFT[®] MAG-MATE[®]

These compact yet powerful Rare Earth permanent lift magnets can be used on flat or round surfaces and contain an internal release On/Off device that does not contact or damage the surface of the part being lifted. Permanent magnetic lifts eliminate the fear of dropping the load being lifted due to power failures.

The locking system is performed by first pulling on the handle to release the lock pin, then rotating the handle to the desired position. The locking feature prevents the handle from being bumped partially "On" and avoids giving the operator a false feeling that the magnet is holding safely.

Features

- On/Off Rare Earth Permanent Magnet
- Handle locks in both On and Off position
- Lifts flat or round loads (see chart below)
- Easy internal manual release does not contact the load
- RFID Enabled
- Heat resistant up to 180°F (82°C)
- 3:1 Design Factor
- CONFORMS TO ASME B30.20 STANDARDS



Model No.	Lift - lbs (kg)	Overall		Magnet			Handle		Bail			Wt. (lbs)
		Ht. (in)	Ln. (in)	Ht. (in)	Wd. (in)	Ln. (in)	Ln. (in)	Th. (in)	Ht. (in)	Wd. (in)		
2VCA1	250 (113)	6-5/8	5	2-5/8	2-5/8	3-5/8	4	3/16	1-3/8	1-1/2	7	
2VCA2	800 (363)	8-7/8	7-7/8	3-7/8	3-5/8	6-3/8	8	1/2	2-3/8	1-3/4	21	
2VCA3	1600 (726)	8-7/8	10-3/4	4-3/4	4-7/8	9-1/8	9	5/8	3-1/2	2-1/4	51	
2VCA4	2500 (1134)	8-7/8	12-5/8	6-1/2	7-1/8	10-5/8	10-3/4	3/4	4-3/4	3-3/4	122	
2VCA5	5000 (2268)	18	16-1/2	8-3/8	9-1/4	14-7/8	16-3/4	7/8	6	4-3/4	288	

Lifting Value in lbs (kg) & *Maximum Sheet Length Due To Sag For Material Thickness For Single Magnet Use

Model No.	1/4" (6' Length)	3/8" (8' Length)	1/2" (8' Length)	3/4" (8' Length)	1" (10' Length)	2" (10' Length)	3" (10' Length)
2VCA1	180 (81)	250 (113)	250 (113)	250 (113)	250 (113)	250 (113)	250 (113)
2VCA2	270 (122)	500 (226)	615 (279)	800 (363)	800 (363)	800 (363)	800 (363)
2VCA3	CF	CF	800 (363)	1600 (726)	1600 (726)	1600 (726)	1600 (726)
2VCA4	NA	NA	CF	CF	1490 (675)	2500 (1134)	2500 (1134)
2VCA5	NA	NA	NA	NA	2625 (1190)	5000 (2268)	5000 (2268)

Round Lifting Applications

Model No.	Lift - lbs (kg)	Min. Dia. (in)	Min. Th. (in)
2VCA1	125 (57)	2	1/2
2VCA2	400 (181)	3	1/2
2VCA3	800 (363)	4	1
2VCA4	1250 (567)	5	2
2VCA5	2500 (1134)	14	4

NOTE: Holding Values for the PowerLift[®] Magnets are stated at 33% of the actual value. We recommend when lifting sheets over 8', use 2 or more lifts on a spreader bar to prevent sheet flexing, sagging or peel-off. Thin material is susceptible to magnetic bleed through, resulting in two sheets being lifted at once. Round Item Holding Values are based on ideal conditions. Pipe length, wall thickness, diameter and surface condition can all affect the magnet's performance. Please consult the factory before specifying these magnets for use on round materials. *These maximum sheet lengths are selected due to the sag characteristics of the specified sheet. The item to be lifted must cover the entire length and width of the magnetic poles to properly engage and release the part. **CF = Consult Factory NA = Not Applicable (Magnets listed will not turn "ON" on specified material thicknesses.)**

VERSALIFT[™] MAG-MATE[®]

Compact and powerful Rare Earth lift magnet for use on flat or round surfaces. Contains an internal ON/OFF release device that does not contact or damage the surface of the part. More features than other lifts and manufactured in the USA (USA M.A.D.E.™).

Features

- Rare Earth Permanent Magnet with a locking On/Off handle & Test load feature
- Stationary Lift Lug(s) and Vertical Lift Capable using the optional Lift Lug attachment
- RFID Enabled - Embedded RFID Chip
- Supports custom pole shoes (4, 1/4"-20 Tapped Holes, 1/2" deep)
- Lifts flat or round loads (see chart below)
- Heat resistant up to 180°F (82°C)
- 3:1 Design Factor
- CONFORMS TO ASME B30.20 STANDARDS

To operate Test Feature, pull spring loaded handle out and rotate it to the "TEST" position. Lift load approx. 2-3" to verify the magnet has the capacity to lift your load. Once verified, place load back down and turn the handle to the "ON" position. **Never complete entire lift operation in "TEST" position.**



Model No.	Lift - lbs (kg)	Overall		Magnet			Handle		Bail			Lift Lug Adaptor		
		Ht. (in)	Ln. (in)	Ht. (in)	Wd. (in)	Ln. (in)	Ln. (in)	Th. (in)	Ht. (in)	Wd. (in)	Wt. (lbs)	Part No.	Ln. (in)	Wt. (lbs)
38V889	600 (272)	6-1/2	7	3-3/4	5	5-5/8	6	3/4	2-1/4	1-3/4	20	38V891	4-5/16	1.15
38V890	1200 (544)	6-1/2	11	3-3/4	5	10	6	3/4	2-1/4	1-3/4	37	38V891	4-5/16	1.15

Horizontal Lifting Value in lbs (kg) & *Maximum Sheet Length Due To Sag For Material Thickness For Single Magnet Use

Model No.	1/4" (6' Length)	3/8" (8' Length)	1/2" (8' Length)	3/4" (8' Length)	1" (10' Length)	2" (10' Length)	3" (10' Length)
38V889	260 (117)	435 (197)	525 (238)	550 (249)	600 (272)	600 (272)	600 (272)
38V890	NA	755 (342)	960 (435)	1165 (528)	1200 (544)	1200 (544)	1200 (544)

Horizontal Round Lifting Applications

Max. Lift - lbs (kg)	Max. Lift at Min. Dia. / Th.
300 (136)	130 (58)
600 (272)	600 (272)

Vertical Lift (Flat Only)

Lift - lbs (kg)	Min. Th.
150 (68)	1.00 in.
300 (136)	1.00 in.

NOTE: Holding Values for the VersaLift[™] Magnets are stated at 33% of the actual value. We recommend when lifting sheets over 8', use 2 or more lifts on a spreader bar to prevent sheet flexing, sagging or peel-off. Thin material is susceptible to magnetic bleed through, resulting in two sheets being lifted at once. Round Holding Values are based on ideal conditions. Consult the factory before specifying these magnets for use on round materials. *Max. sheet lengths are selected due to sag characteristics of specified sheet. The item to be lifted must cover the entire length and width of the magnetic poles to properly engage and release the part. **CF = Consult Factory, NA = Not Applicable (Magnets will not turn "ON" with stated thicknesses.)**

MORE MAGNETIC LIFTING SOLUTIONS!

DYNAMICLIFT™ **MAG-MATE®**

These lightweight and powerful Rare Earth permanent lift magnets, featuring Magswitch® technology, can be used on flat or round surfaces and contain an internal release On/Off device that does not contact or damage the surface of the part being lifted. DynamicLifts™ have superior holding on thin gauge ferrous metals.

Features

- On/Off Rare Earth design
- Lifts flat or round loads (see chart below)
- Easy internal manual release does not contact the load
- Heat resistant up to 180°F (82°C)
- Handle locks in "On" position
- 3:1 Design Factor
- CONFORMS TO ASME B30.20 STANDARDS



Model No.	Working Load Limit (WLL)		Overall		Magnet			Handle		Bail		
	LBS	KG	Ht. (in)	Ln. (in)	Ht. (in)	Wd. (in)	Ln. (in)	Ln. (in)	Th. (in)	Ht. (in)	Wd. (in)	Wt. (lbs)
53CV42	150	68.04	9	5	2-3/4	2-1/2	3	2-1/2	1/4	2-1/4	3	6.1
53CV43	334	151.50	9-1/4	6-1/2	3	4	4-1/4	2-1/2	1/4	2-1/4	4	13.3

Model No.	Horizontal Flat Part WLL (lbs (kg)), Min. Steel Thickness & *Max. Length Due To Sag For Single Magnet							Vertical Part Lift (Flat Only)	
	1/4" (6' Lg.)	3/8" (8' Lg.)	1/2" (8' Lg.)	3/4" (8' Lg.)	1" (10' Lg.)	2" (10' Lg.)	3" (10' Lg.)	WLL - lbs (kg)	Min. Thickness
53CV42	150 (68.04)	150 (68.04)	150 (68.04)	150 (68.04)	150 (68.04)	150 (68.04)	150 (68.04)	37.5 (17.01)	1.00 in.
53CV43	275 (124.73)	320 (145.15)	334 (151.49)	334 (151.49)	334 (151.49)	334 (151.49)	334 (151.49)	83.5 (37.88)	1.00 in.

Model No.	Horizontal Round Part Round Lifting Applications			
	Maximum WLL - lbs (kg)	Minimum Diameter	Minimum Wall Thickness	Maximum WLL at Min. Diameter & Min. Thickness
53CV42	75 (34.02)	2	1/8	65 (29.48)
53CV43	167 (75.75)	4	1/8	100 (45.36)

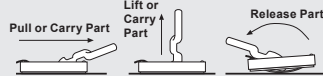
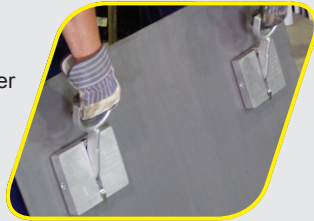
NOTE: Lifting Values for the DynamicLift™ Magnets are stated at 33% of the actual value. We recommend when lifting sheets over 8', use 2 or more lifts on a spreader bar to prevent sheet flexing, sagging or peel-off. Thin material is susceptible to magnetic bleed through, resulting in two sheets being lifted at once. Consult the factory before specifying these magnets for use on round materials. Round Item Lifting Values are based on ideal conditions. Length, wall thickness, diameter and surface can all affect the magnet's performance. *Maximum sheet lengths are selected due to the sag characteristics of the specified sheet. The item to be lifted must cover the entire length and width of the magnetic poles to properly engage and release.

SHEET HANDLER

Protect workers from cuts, slivers, nicks & burns! Use the Magnetic Sheet Handler for steel sheets, plates, hot or oily parts.

Features

- Handle sheets stacked horizontally or vertically
- Increase productivity
- No electricity required



Model No.	Lift - lbs (kg)	Th. (in)	Wd. (in)	Handle Ln. (in)	Ln. (in)	Wt. (lbs)	Max. Penetration (in)
2RVA3	50.0 (22.6)	4	3-5/8	8	6-1/8	3.75	3/16
2RVA4	125.0 (56.7)	4	7-1/4	8	6-1/8	8.25	5/16
2RVA5	200.0 (90.7)	4	7-1/4	8	6-1/8	8.25	5/16
2RVA6	300.0 (136.0)	4	7-1/4	8	6-1/8	8.25	5/16

POWERGRIPS

Our PowerGrip Magnets are an fast, effective and affordable way to move parts from your cutting table.

Features

- Effective holding against shear force
- Welded steel construction
- Strong permanent magnetic material
- Securely grips heavy parts
- 300°F (148°C)



Model No.	Lift - lbs (kg)	Ht. (in)	Wd. (in)	Ln. (in)	Poles	Wt. (lbs)
2RVA7	25.0 (11.3)	2	3/4	2-1/8	2	0.40
2RVA8	51.5 (23.3)	2-1/4	3/4	4	2	0.75
2RVA9	92.5 (41.9)	4	1-7/8	5-1/4	4	2.40

TRIGGER LIFT®

Hand held lift grips parts with an easy to use trigger release.

Features

- One handed operation
- Permanent magnet
- Move parts faster & easier
- Aluminum housing
- Retrieve hot parts from cutting tables
- 300°F (148°C)



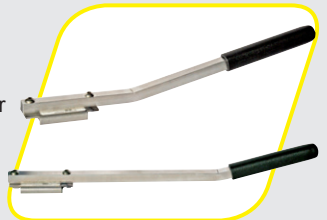
Model No.	Lift - lbs (kg)	Ht. (in)	Wd. (in)	Ln. (in)	Wt. (lbs)
2RVA2	50.0 (22.6)	4-13/16	2-3/8	3-3/8	1.50

GRIPSTICK

Lightweight magnetic hand tool for assisting when use of hands to pickup hot or oily parts is not desired. Useful for removing metal parts from presses, cutting tables or CNC machines.

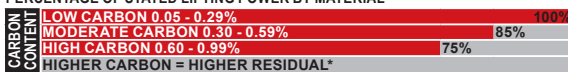
Features

- Provides extra reach
- Cushioned grip and magnet ends are reversible
- 10° angled handle to best suit your application.



Model No.	Magnet Material	Lift - lbs (kg)	Ln. (in)	Wd. (in)	Ht. (in)	Wt. (lbs)
4DMR2	Ceramic	12.5 (5.6)	14	1-3/8	7/8	0.65
4DMR3	Rare Earth	43.5 (19.7)	14	1-3/8	7/8	0.65

PERCENTAGE OF STATED LIFTING POWER BY MATERIAL



PERCENTAGE OF STATED LIFTING POWER BY SURFACE FINISH



* HIGH CARBON STEEL (TOOL STEEL) WILL ABSORB MAGNETISM & MAY MAGNETICALLY STICK TO STEEL SURFACES, SUCH AS THE MAGNET, OR ATTRACT FERROUS PARTICLES.

CUSTOM ENGINEERED LIFTING SOLUTIONS ARE AVAILABLE!