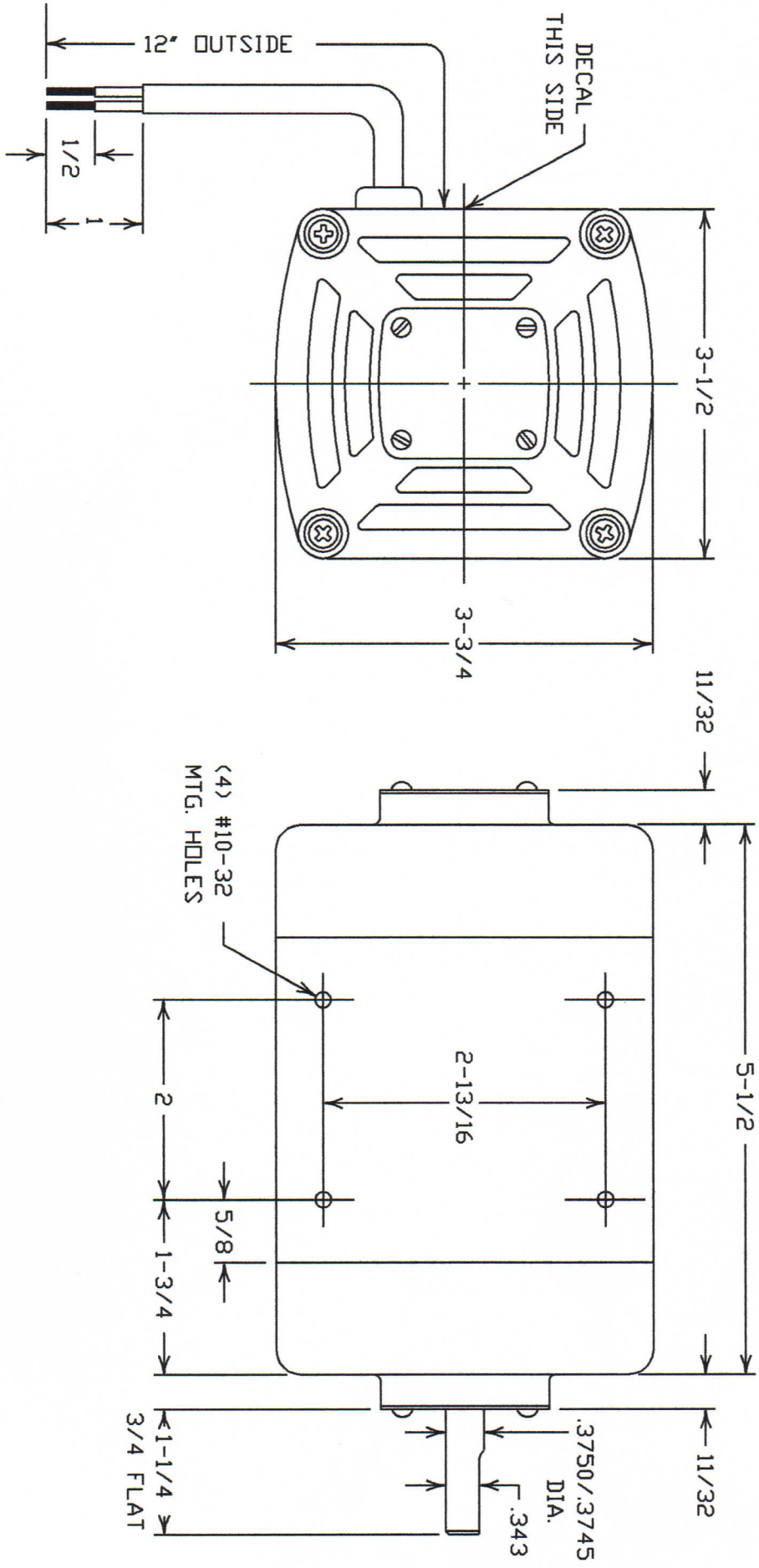


MOTOR SPECIALTY, INC.
RACINE, WISCONSIN

NAME:	W.W. GRAINGER	DR. BY:	BD	PART NO.	4433
MAT'L.	2M145	DATE:	4/1/93	REVISIONS	
TOLERANCE:	.xxx ± .005 .xx ± .01 FRAC. ± 1/64	SCALE:	NONE		

VOLTAGE: 115 AC 60 HZ
 RATING: 1/2 HP 10,000 RPM
 AMPS: 6.3
 ROTATION: CCW SHAFT END
 CONSTRUCTION: BALL BEARINGS
 CORD: 18/2 SJT 105°C
 SHAFT MATERIAL: 1144 COLD DRAWN STRESS RELIEVED



TOLERANCES: (UNLESS SPECIFIED) SHAFT EXT. ± 1/32" STUD EXT. ± 3/64" LEAD LGTH. ± 1/2" STP. LGTH. ± 1/16"