

# Operating Instructions



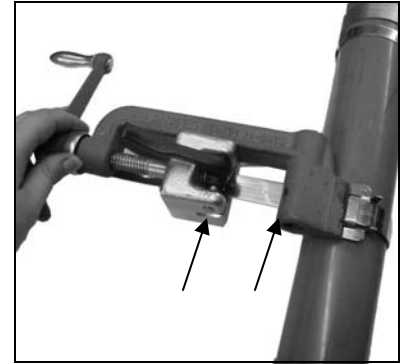
## GRC003 Heavy Duty Hand Tool



1. Band may be used from bulk roll as this *completely eliminates waste of band*. Slide buckle on band as shown, bringing end of band around object to be clamped and again through buckle.



2. Continue band around object once more and again through buckle. *Double banding develops a great deal more radial compression than single banding*. Bend end of band under buckle.



3. Place band in opening of tool nose and gripper block. Move into slot as far as possible, to avoid buckle sliding into tool nose. Tighten band clamp by turning the tension handle clockwise while holding band gripper tight against band. *NOTE: The spring load of the band gripper is not intended to secure and prevent the band from slipping during tension process.*



4. Place finger on BAND-IT Band at buckle bridge while tensioning with tool handle. When you feel BAND-IT Band stop moving through buckle as you are turning handle, *maximum pressure is being exerted by the BAND-IT Band around object being clamped*. Stop turning handle.



5. Roll tool over buckle, backing off with tension handle 1-1½ turns throughout entire rolling operation. Failure to back off tension with tension handle throughout entire course of roll-over may result in breaking of band. There is no loss of tension as band released is used up in the bend.



6. Pull cutting handle to cut the band. When applying Giant Band clamps, prior to cutting off clamp, release band gripper and push tool nose away from buckle approx. ¼".



7. Remove tool, holding stub of band down with thumb.



8. Hammer down buckle ears to complete BAND-IT clamp.

## Gripper Cleaning Instructions:



1. Remove gripper. Align gripper pin hole with notch in tool frame. Using a punch and hammer, punch pin out of slide block.



2. Using a wire brush, clean all foreign matter from teeth.



3. Replace pin. Gripper spring must be seated in tension screw hole. Align gripper hole with slide block hole, insert pin in hole and hammer pin in place.

**NOTE:** Periodically apply food-grade white lubricant or equivalent to tension screw thread (Item 6 on page 3) to prevent excessive wear.

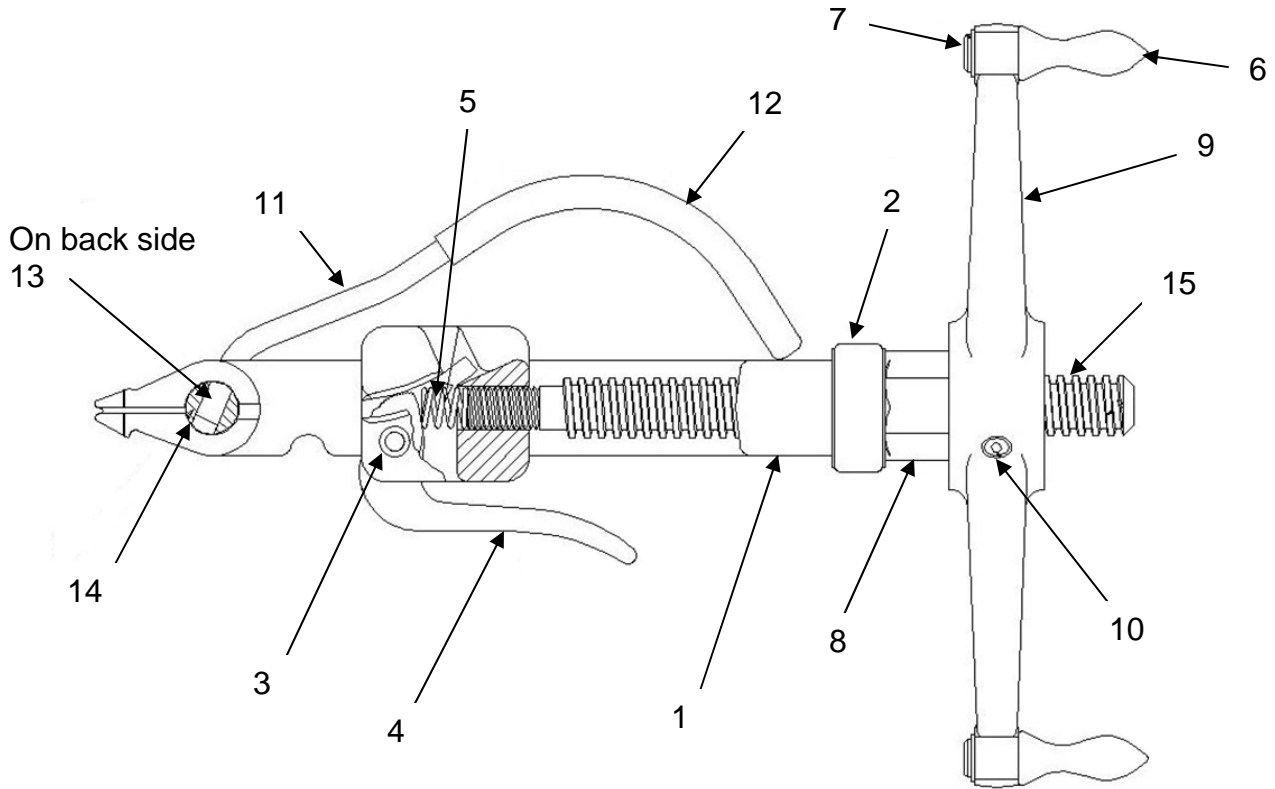
If tool fails to securely grip tail of clamp, follow gripper cleaning instructions above.

Refer to website for warranty information: <http://www.band-it-idex.com/warranty.html>

# Tool Assembly Parts List



# GRC003 Heavy Duty Hand Tool



1. To assist in removing threaded parts, apply heat to soften locking compound.

2. When connecting item 13 (set screw) to item 14 (cutter bar), clean threads (male and female) of foreign matter, then apply one drop of medium strength locking compound (Loctite 242 or equiv.) onto male thread and connect parts together.

3. Kit # C01899 contains one each of a C01887 band gripper, C03186 gripper spring and C01787 pin. Replace all parts as a new set to maximize tool performance. Periodic cleaning of band gripper teeth will improve tool performance.

GRC003 BAND-IT TOOL, REPAIR PARTS LIST			
ASSY #	ITEM	DESCRIPTION	QTY
C02187	1	TOOL FRAME	1
C07086	2	THRUST BEARING	1
C01899	3	PIN, ECC. LEVER PIVOT	1
	4	BAND GRIPPER	1
	5	GRIPPER SPRING	1
C04799	6	SPIN GRIP	2
	7	EXTERNAL RETAINING RING	2
	8	BUSHING, TENSION HANDLE	1
	9	TENSION HANDLE	1
C05887	10	SET SCREW, HALF DOG	1
	11	CUTTER BAR HANDLE	1
	12	VINYL GRIP	1
	13	SET SCREW	1
C04986	14	CUTTER BAR	1
	15	TENSION SCREW, 5/8", LUBRICANT, FIN	1