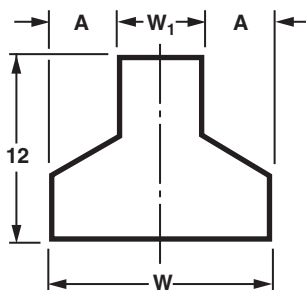
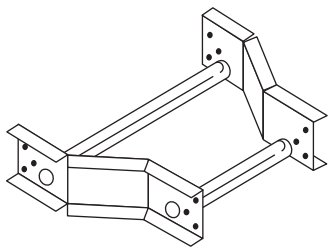


LADDER CABLE TRAY SYSTEM

Straight Reducer [ST]



Straight (ST)

Note: Nominal 9" rung spacing maintained through centerline of all fittings.

Ordering Information:

Prefix No.

[F] [D] [M] - [W] [Bp] - [W1]

[F] Flange - (2=13/16", 4=1-1/4")

[D] Load Depth - (3", 4", 5", 6")

[M] Material/Finish - (6=Mill-Galv, 7=HDAF, 8=Alum., T=304SS)

[W] Width - (06", 09", 12", 18", 24", 30", 36", 42", 48")

[Bp] Basic Part No - (ST)

[W1] Width - (06", 09", 12", 18", 24", 30", 36", 42")

EXAMPLE: 238-12ST-06

CSA Certified for CSA Systems

Width - W	Width - W1	"A" Dimension	Part Number
48" (1219mm)	42" (1067mm)	3" (76mm)	XXX-48ST-42
	36" (914mm)	6" (152mm)	XXX-48ST-36
	30" (762mm)	9" (229mm)	XXX-48ST-30
	24" (610mm)	12" (305mm)	XXX-48ST-24
	18" (457mm)	15" (381mm)	XXX-48ST-18
	12" (305mm)	18" (457mm)	XXX-48ST-12
42" (1067mm)	9" (229mm)	19 1/2" (495mm)	XXX-48ST-09
	6" (152mm)	21" (533mm)	XXX-48ST-06
	36" (914mm)	3" (76mm)	XXX-42ST-36
	30" (762mm)	6" (152mm)	XXX-42ST-30
	24" (610mm)	9" (229mm)	XXX-42ST-24
	18" (457mm)	12" (305mm)	XXX-42ST-18
36" (914mm)	12" (305mm)	15" (381mm)	XXX-42ST-12
	9" (229mm)	16 1/2" (419mm)	XXX-42ST-09
	6" (152mm)	18" (457mm)	XXX-42ST-06
	30" (762mm)	3" (76mm)	XXX-36ST-30
	24" (610mm)	6" (152mm)	XXX-36ST-24
	18" (457mm)	9" (229mm)	XXX-36ST-18
30" (762mm)	12" (305mm)	12" (305mm)	XXX-36ST-12
	9" (229mm)	13 1/2" (343mm)	XXX-36ST-09
	6" (152mm)	15" (381mm)	XXX-36ST-06
	24" (610mm)	3" (76mm)	XXX-30ST-24
	18" (457mm)	6" (152mm)	XXX-30ST-18
	12" (305mm)	9" (229mm)	XXX-30ST-12
24" (610mm)	9" (229mm)	10 1/2" (267mm)	XXX-30ST-09
	6" (152mm)	12" (304mm)	XXX-30ST-06
	18" (457mm)	3" (76mm)	XXX-24ST-18
	12" (305mm)	6" (152mm)	XXX-24ST-12
	9" (229mm)	7 1/2" (191mm)	XXX-24ST-09
	6" (152mm)	9" (229mm)	XXX-24ST-06
18" (457mm)	12" (305mm)	3" (76mm)	XXX-18ST-12
	9" (229mm)	4 1/2" (114mm)	XXX-18ST-09
	6" (152mm)	6" (152mm)	XXX-18ST-06
12" (305mm)	9" (229mm)	1 1/2" (38mm)	XXX-12ST-09
	6" (152mm)	3" (76mm)	XXX-12ST-06
9" (229mm)	6" (152mm)	1 1/2" (38mm)	XXX-09ST-06

MATERIAL & FINISH SPECIFICATIONS (Ladder Cable Tray) – Siderails: Mill-Galvanized Steel [6] ASTM A-653-G90 CS (18 & 16 Gage); ASTM A-653-G90 CS (14 & 12 Gage) Hot-Dip Galvanized after Fabrication ASTM A-123 [7] ASTM A-1008 (18 & 16 Gage); ASTM A-1011 (14 & 12 Gage) Aluminum [8] AA-6063-T6 Extruded Type 304 Stainless Steel [T] ASTM A-240; Type 304 Rungs: Mill-Galvanized Steel [6] ASTM A-653-G90 CS Hot-Dip Galvanized after Fabrication ASTM A-123 [7] ASTM A-1008 Aluminum [8] AA-6063-T6 Extruded; AA-6063-T832 Extruded; AA-6063-T52 Extruded Type 304 Stainless Steel [T] ASTM A-269; Type 304

Project: _____	Approval Stamp: _____
Architect / Engineer: _____	
Date: _____ Phone: _____	
Contractor: _____	
Address: _____ _____ _____	
Notes 1: _____ _____	
Notes 2: _____ _____	