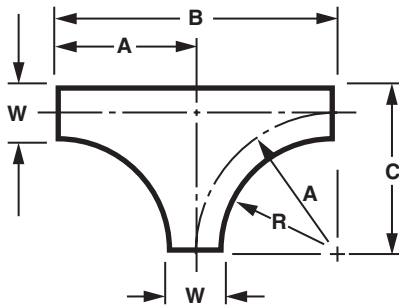
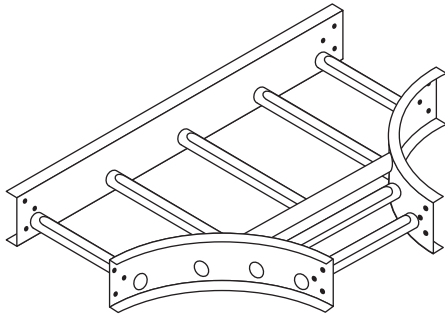


# LADDER CABLE TRAY SYSTEM

## Horizontal Tee [FT]



**Note:** Nominal 9" rung spacing maintained through centerline of all fittings.

Ordering Information:

Prefix No.

**[F] [D] [M] - [W] [Bp] - [R]**

**[F]** Flange - (2=13/16", 4=1-1/4")

**[D]** Load Depth - (3", 4", 5", 6")

**[M]** Material/Finish - (6=Mill-Galv, 7=HDAF, 8=Alum., T=304SS)

**[W]** Width - (06", 09", 12", 18", 24", 30", 36", 42", 48")

**[Bp]** Basic Part No - FT

**[R]** Radius - (12", 24", 36")

**EXAMPLE:** 238-12FT-12

### CSA Certified for CSA Systems

Radius - R	Width - W	"A" Dimension	"B" Dimension	"C" Dimension	Part Number
<b>12"</b> (305mm)	6" (152mm)	15" (381mm)	30" (762mm)	18" (457mm)	XXX-06FT-12
	9" (229mm)	16½" (419mm)	33" (838mm)	21" (533mm)	XXX-09FT-12
	12" (305mm)	18" (457mm)	36" (914mm)	24" (610mm)	XXX-12FT-12
	18" (457mm)	21" (533mm)	42" (1067mm)	30" (762mm)	XXX-18FT-12
	24" (610mm)	24" (610mm)	48" (1219mm)	36" (914mm)	XXX-24FT-12
	30" (762mm)	27" (686mm)	54" (1372mm)	42" (1067mm)	XXX-30FT-12
	36" (914mm)	30" (762mm)	60" (1524mm)	48" (1219mm)	XXX-36FT-12
	42" (1067mm)	33" (838mm)	66" (1676mm)	54" (1372mm)	XXX-42FT-12
48" (1219mm)	36" (914mm)	72" (1829mm)	60" (1524mm)	XXX-48FT-12	
<b>24"</b> (610mm)	6" (152mm)	27" (686mm)	54" (1372mm)	30" (762mm)	XXX-06FT-24
	9" (229mm)	28½" (724mm)	57" (1448mm)	33" (838mm)	XXX-09FT-24
	12" (305mm)	30" (762mm)	60" (1524mm)	36" (914mm)	XXX-12FT-24
	18" (457mm)	33" (838mm)	66" (1676mm)	42" (1067mm)	XXX-18FT-24
	24" (610mm)	36" (914mm)	72" (1829mm)	48" (1219mm)	XXX-24FT-24
	30" (762mm)	39" (991mm)	78" (1981mm)	54" (1372mm)	XXX-30FT-24
	36" (914mm)	42" (1067mm)	84" (2134mm)	60" (1524mm)	XXX-36FT-24
	42" (1067mm)	45" (1143mm)	90" (2286mm)	66" (1676mm)	XXX-42FT-24
48" (1219mm)	48" (1219mm)	96" (2438mm)	72" (1829mm)	XXX-48FT-24	
<b>36"</b> (914mm)	6" (152mm)	39" (991mm)	78" (1981mm)	42" (1067mm)	XXX-06FT-36
	9" (229mm)	40½" (1029mm)	81" (2057mm)	45" (1143mm)	XXX-09FT-36
	12" (305mm)	42" (1067mm)	84" (2134mm)	48" (1219mm)	XXX-12FT-36
	18" (457mm)	45" (1143mm)	90" (2286mm)	54" (1372mm)	XXX-18FT-36
	24" (610mm)	48" (1219mm)	96" (2438mm)	60" (1524mm)	XXX-24FT-36
	30" (762mm)	51" (1295mm)	102" (2591mm)	66" (1676mm)	XXX-30FT-36
	36" (914mm)	54" (1372mm)	108" (2743mm)	72" (1829mm)	XXX-36FT-36
	42" (1067mm)	57" (1448mm)	114" (2896mm)	78" (1981mm)	XXX-42FT-36
48" (1219mm)	60" (1524mm)	120" (3048mm)	84" (2134mm)	XXX-48FT-36	

**MATERIAL & FINISH SPECIFICATIONS (Ladder Cable Tray) – Siderails:** Mill-Galvanized Steel [6] ASTM A-653-G90 CS (18 & 16 Gage); ASTM A-653-G90 CS (14 & 12 Gage) Hot-Dip Galvanized after Fabrication ASTM A-123 [7] ASTM A-1008 (18 & 16 Gage); ASTM A-1011 (14 & 12 Gage) Aluminum [8] AA-6063-T6 Extruded Type 304 Stainless Steel [T] ASTM A-240; Type 304 Rungs: Mill-Galvanized Steel [6] ASTM A-653-G90 CS Hot-Dip Galvanized after Fabrication ASTM A-123 [7] ASTM A-1008 Aluminum [8] AA-6063-T6 Extruded; AA-6063-T832 Extruded; AA-6063-T52 Extruded Type 304 Stainless Steel [T] ASTM A-269; Type 304

Project: \_\_\_\_\_

Approval Stamp:

Architect / Engineer: \_\_\_\_\_

Date: \_\_\_\_\_ Phone: \_\_\_\_\_

Contractor: \_\_\_\_\_

Address: \_\_\_\_\_

Notes 1: \_\_\_\_\_

Notes 2: \_\_\_\_\_