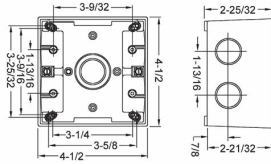


**TWO GANG BOXES - 2 IN. TO 2-5/8 IN. DEEP****2-5/8 in. Deep with Lugs - Five Threaded Outlets - 4-1/2 in. x 4-1/2 in.  
N/A****D06**

Catalog #: 5389-0

**APPLICATIONS**For use in branch circuit wiring in wet, damp, or dry locations  
May be used as a weatherproof junction box, or as a housing for receptacles, switches, and GFCI's**PRODUCT FEATURES**Reinforced connector outlets  
State-of-the-art powder coat finish provides maximum weatherability and scratch resistance  
Eight box mounting options with detachable lugs  
Two closure plugs included  
Hubs accept all threaded fittings and threaded conduit  
Ground screw installed  
Multi-lingual instructions in each package  
Includes gasket and mounting hardware  
N/A**UL LISTED**

File E195978

**CSA**

C22.2 No. 18

**NEMA**

3R Rated

**GENERAL PRODUCT INFORMATION**

Color: Gray

**CONFIGURATION**Number Of Outlets: 2  
Gangs: 2**PRODUCT MEASUREMENTS**Depth: 2-5/8 in.  
Outlet Size: 1 in.  
Cubic Inches (cm<sup>3</sup>): 36.0 (589.9)  
Wt. Ea. (Lbs.): 1.139**PACKAGING**Package Type: Shrink  
Std. Pkg.: 9  
Product UPC-A Labeled: Yes  
Weight (Lbs. Per/C): 113.90  
Ship Carton Length (in.): 16.19  
Ship Carton Width (in.): 6.50  
Ship Carton Height (in.): 8.50  
Ctn Weight (Lbs.): 10.25  
Pallet Qty: 810.00  
UPC Number: 050169538906  
I2of5: 50050169538901