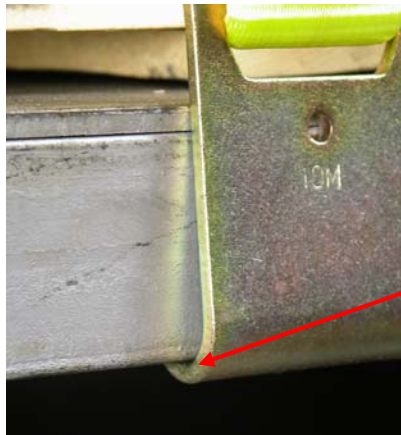


Ratchet Tiedown Instructions



Bearing Point of hook

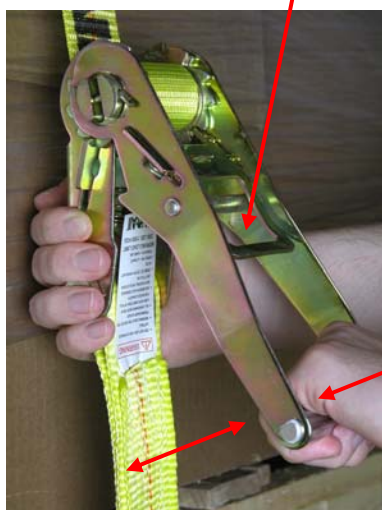
1. Fully engage hooks so that a secure tie down point rests against the base (*Bearing Point*) of the hook. Never load tip of hook. Hardware must always be in line with direction of pull to achieve Working Load Limit.



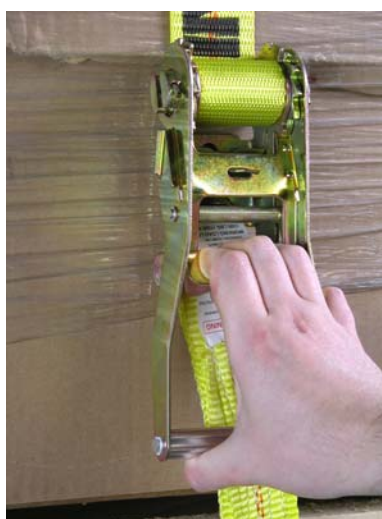
2. Insert free end of strap through mandrel slot in ratchet and pull until snug.

3. If handle is in the closed, locked position, unlock by pulling on the *Lock Release Handle*. Tighten strap by pumping the handle until strap is tight. A minimum of two wraps of webbing around the mandrel is required.

Lock Release Handle



4. Lock assembly by pulling on *Lock Release Handle* and pushing main handle until fully closed.



5. To release tension and remove tiedown, pull on *Lock Release Handle* and rotate main handle 180° to lock in the open position. Mandrel will be free to turn and release webbing.

