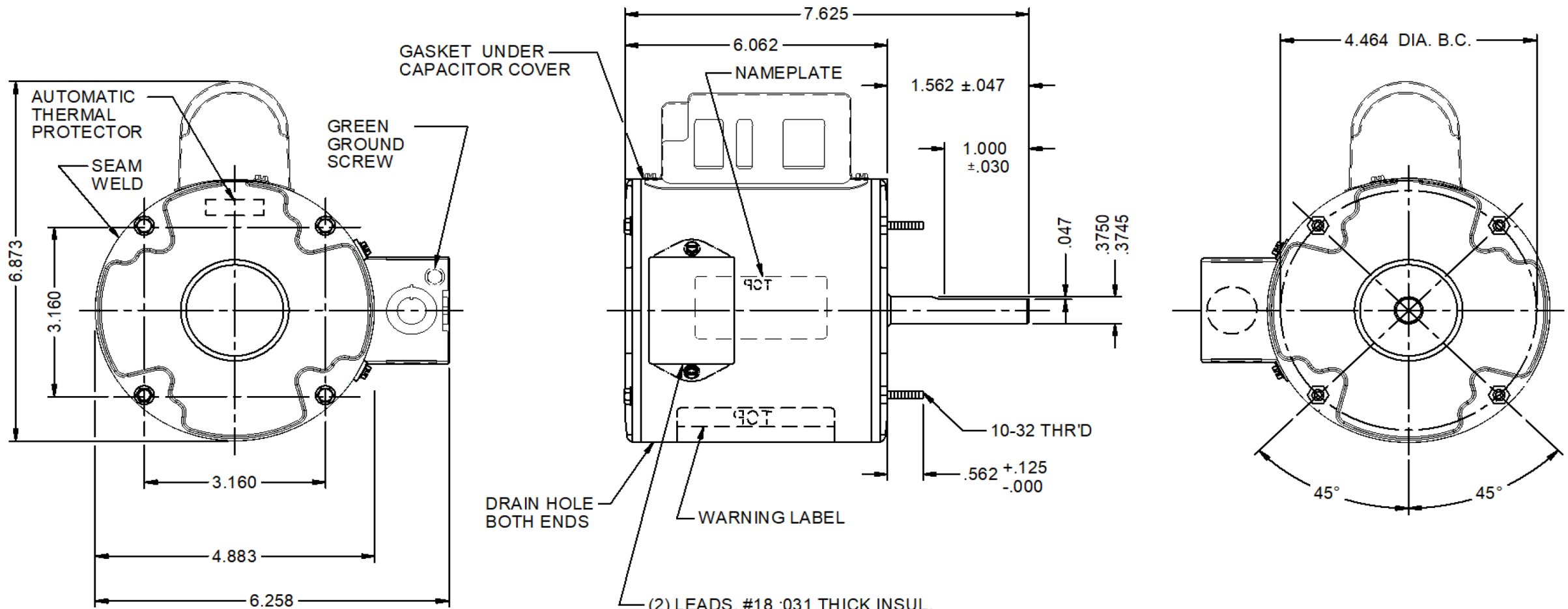


Dimensional Drawing



28DV55A REV. -

MODEL	REF	CUSTOMER	HP	VOLTS	AMPS	HZ	RPM	ROTATION	CUSTOMER PT. NO.	DESCRIPTION / REMARKS
K48HXGFW-4306		GRAINGER	1/20	115	1.0	60	1550	CCW LE	28DV55A	42Y, TEAO, SELF-ALIGN BEARING



(2) LEADS, #18 .031 THICK INSUL, TO EXTEND BEYOND MOTOR 6.0" +2.0 -0.0 WHT AND BLK LEADS SKINNED .750" ±.062 AND COILED INTO OUTLET BOX.

CONNECTIONS
 HIGH - BLACK
 COM - WHITE
 ROTATION IS CCW LEAD END
 NON-REVERSIBLE
 3 MFD, 440 VAC, CAP

SUPPLIED DETACHED IN SEALED PLASTIC BAG.
 1 - OUTLET BOX COVER
 1 - MTG SCREW
 1 - BOOKLET

DRAWING NO.	PAGE 1 of 1	REV.
28DV55A		-

Performance Data



28DV55A

REV.
-

MOTOR PERFORMANCE

HP:	1/20								
Poles:	4								
Ambient (°C)	40								
Altitude (FASL):									
No. of Speeds:	1								
Volts:	115	115							
HZ:	60	60							
Service Factor:	1								
Efficiency:	@ Rated Load	34.2							
Power Factor:	@ Rated Load	88.3							
Amps:	@ No Load								
	@ Rated Load	1.09							
	@ Service Factor	N/A							
	@ Locked Rotor	1.09							
RPM:	@ Rated Load	1576							
Torques: Oz.Ft. / Lb.In. (Circle One)	Breakdown	3.99							
	Locked Rotor	1.6							
	Pull-Up	1.4							
	Rated Load	2.71							
	Service Factor	N/A							
Watts:	@ Rated Load	1.09							
KVA Code:									
Temperature Rise:	@ Rated Load	N/A							
	@ Service Factor	N/A							
Thermal Protector:	Trip Temp (°C)								
Winding Material:	Start (Auxiliary)						CU		
	Run (Main)						CU		
Capacitor(s):	Start (MFD / Volts)								
	No. of Start Capacitors						N/A		
	Run (MFD / Volts)						3.0 / 440		
	No. of Run Capacitors								

LOW SPEED PERFORMANCE DATA:

HP:									
Poles:									
Volts:									
HZ:									
Efficiency:	@ Rated Load								
Power Factor:	@ Rated Load								
Amps:	@ No Load								
	@ Rated Load								
	@ Service Factor								
	@ Locked Rotor								
Torques: Oz.Ft. / Lb.In. (Circle One)	Breakdown								
	Locked Rotor								
	Pull-Up								
	Rated Load								
	Service Factor								
Watts:	@ Rated Load								
Temperature Rise:	@ Rated Load								
	@ Service Factor								

DRAWING NO. PAGE 1 REV.
28DV55A -

Performance Data



28DV55A

REV.
-

Dayton Manufacturing Company

Motor Description

Model: K048GFW4306 28DV55
 Motor ID: 1
 Poles: 4
 Volts: 115
 Frequency: 60
 HP: 1/20
 Speed: 1550
 Phase: 1
 Protector: AUTO

Test Conditions

Test Type: Run
 Test Number: 3
 Poles: 4
 Volts: 115
 Hz: 60
 Rotation:
 Special Cond:
 Speed Conn:
 TestBoard: Amtps Performance Fixture #4
 Run Cap: 3.0 MFD 440 VOLT
 Start Cap: 0
 Environment:
 Tested: 5/8/2007 7:11:04 PM
 Tested By: Taylor, Melvin
 Gear Ratio: 1:1
 Bearing Friction: -0.12 Oz-Ft
 Windage Torque: -0.95 Oz-Ft

Special Points	Vline (V)	Vaux (V)	Vcap (V)	Iline (A)	Imain (A)	Iaux (A)	Watts	RPM	Tq (Oz-ft)	HP	Eff (%)	PF (%)	Cap
	115.0	204.0	240.6	0.690	0.703	0.271	51.6	1744	0.000	0.000	0.0	65.1	3.0
	115.0	200.3	235.3	0.732	0.718	0.265	59.4	1725	0.374	0.008	9.7	70.6	3.0
	115.0	196.8	230.4	0.776	0.741	0.260	66.8	1705	0.749	0.015	17.0	74.9	3.0
	115.0	193.0	225.6	0.823	0.769	0.254	74.4	1687	1.038	0.021	20.9	78.6	3.0
	115.0	189.0	220.6	0.872	0.804	0.249	81.8	1666	1.408	0.028	25.5	81.6	3.0
	115.0	184.6	215.7	0.925	0.846	0.243	89.1	1644	1.805	0.035	29.6	83.8	3.0
	115.0	180.0	210.4	0.982	0.894	0.237	96.8	1621	2.101	0.041	31.3	85.7	3.0
	115.0	175.1	205.0	1.043	0.949	0.231	104.6	1598	2.432	0.046	33.0	87.2	3.0
2.71 OZ-FT	115.0	170.6	200.4	1.094	0.997	0.226	111.0	1576	2.710	0.051	34.2	88.3	3.0
	115.0	169.6	199.4	1.107	1.009	0.224	112.7	1570	2.771	0.052	34.3	88.5	3.0
1550 RPM	115.0	166.0	195.6	1.152	1.053	0.220	118.2	1550	2.968	0.055	34.6	89.2	3.0
	115.0	164.3	193.8	1.172	1.073	0.218	120.9	1542	3.017	0.055	34.2	89.7	3.0
	115.0	158.6	188.2	1.242	1.142	0.212	129.1	1510	3.282	0.059	34.1	90.4	3.0
	115.0	152.7	182.5	1.311	1.213	0.205	137.2	1477	3.497	0.061	33.4	91.0	3.0
	115.0	146.6	176.7	1.384	1.289	0.199	145.5	1440	3.675	0.063	32.3	91.4	3.0
	115.0	140.5	171.1	1.456	1.364	0.193	153.7	1400	3.806	0.063	30.8	91.8	3.0
	115.0	134.1	165.6	1.529	1.442	0.186	161.7	1359	3.915	0.063	29.2	91.9	3.0
	115.0	127.6	160.2	1.602	1.520	0.181	169.6	1313	3.982	0.062	27.4	92.0	3.0
	115.0	121.1	155.2	1.675	1.599	0.175	177.3	1264	3.992	0.060	25.3	92.1	3.0
BDT OZ-FT	115.0	120.1	154.7	1.683	1.607	0.174	178.0	1257	3.992	0.060	25.0	92.0	3.0
	115.0	114.5	150.5	1.744	1.675	0.170	184.6	1211	3.941	0.057	23.0	92.0	3.0
	115.0	108.0	146.0	1.813	1.750	0.165	191.8	1155	3.844	0.053	20.6	92.0	3.0
	115.0	101.3	142.1	1.880	1.824	0.160	198.4	1093	3.762	0.049	18.4	91.8	3.0
	115.0	94.9	138.2	1.941	1.893	0.156	204.7	1028	3.619	0.044	16.1	91.7	3.0
	115.0	88.4	135.0	2.000	1.959	0.152	210.4	959	3.435	0.039	13.9	91.5	3.0
	115.0	81.9	131.8	2.057	2.023	0.148	215.9	882	3.143	0.033	11.4	91.3	3.0
	115.0	75.5	129.0	2.107	2.081	0.145	220.5	804	3.037	0.029	9.8	91.0	3.0
	115.0	68.9	126.6	2.152	2.133	0.142	224.5	720	2.879	0.025	8.2	90.7	3.0
	115.0	62.5	124.7	2.188	2.177	0.140	227.7	630	2.722	0.020	6.7	90.5	3.0
	115.0	56.1	124.2	2.216	2.213	0.140	230.4	534	2.554	0.016	5.3	90.4	3.0
	115.0	50.8	124.8	2.242	2.246	0.141	233.0	434	1.803	0.009	3.0	90.4	3.0
	115.0	46.5	126.0	2.266	2.276	0.142	235.5	327	1.955	0.008	2.4	90.4	3.0
	115.0	42.0	127.1	2.285	2.301	0.143	237.4	216	1.313	0.003	1.1	90.3	3.0
	115.0	37.1	128.4	2.297	2.320	0.145	238.6	90	1.709	0.002	0.6	90.3	3.0

DRAWING NO. PAGE 1 of 2 REV.
 28DV55A -

Dayton Electric Mfg. Co. Lake Forest, IL 60045 USA

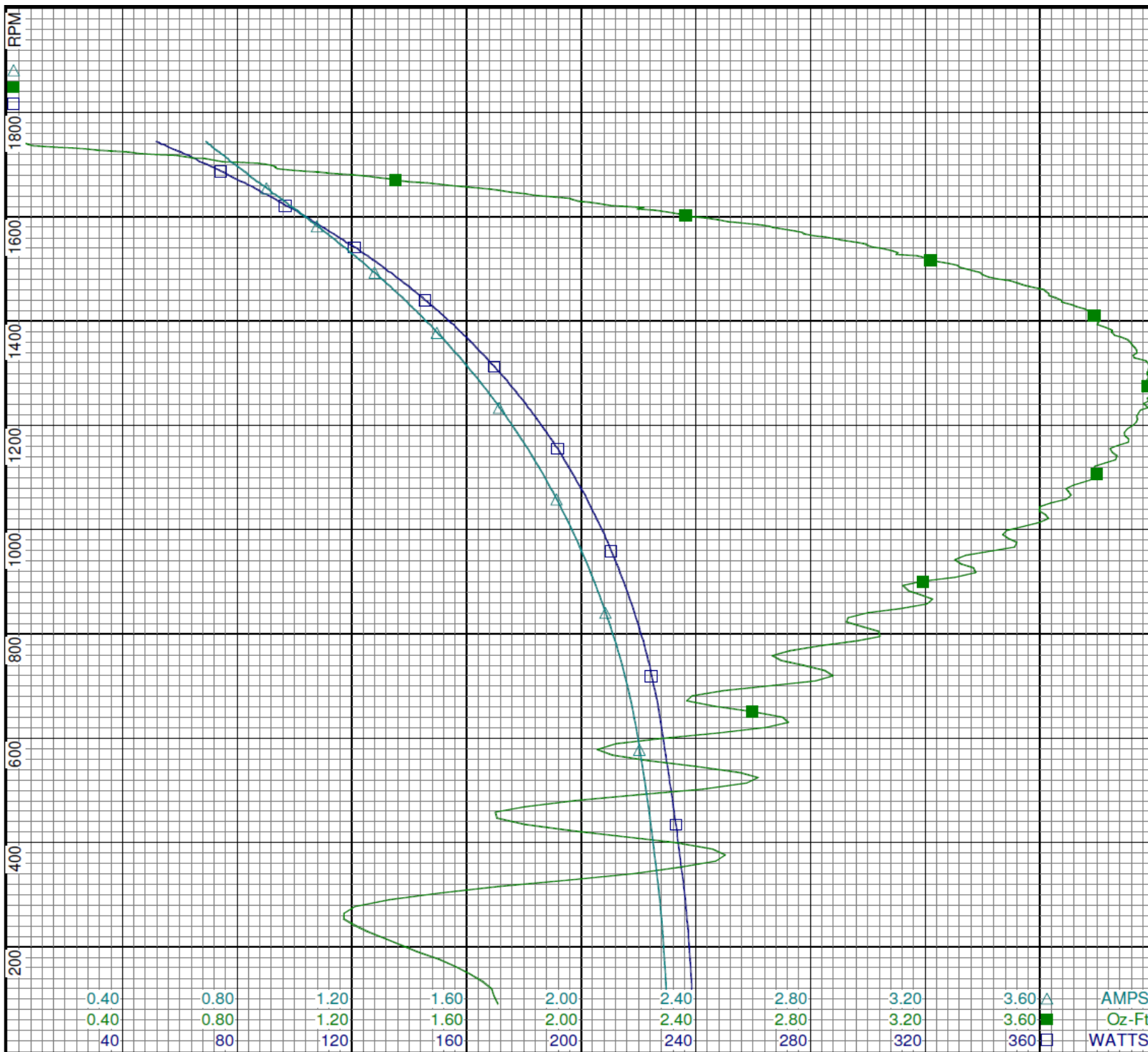
Performance Data



28DV55A

REV.

-



Curve Descriptions:
 Motor(1) Test 3 Run 115V 60 Hz 4P

- SPEED vs WATTS
- SPEED vs TORQUE
- △ SPEED vs ILine

Motor Ratings:
 (1) K048HXGF4306 ID: 1

DRAWING NO.	PAGE 2 of 2	REV.
28DV55A		-

Dayton Electric Mfg. Co. Lake Forest, IL 60045 USA

©2019 W.W. Grainger, Inc. This design may not be reproduced, modified or redistributed without written permission from W.W. Grainger, Inc.

28DV55A	REV.
---------	------

28DV55A	REV.
---------	------

28DV55A	REV.
---------	------

CONNECTIONS

COM - WHITE

HIGH - BLACK

ROTATION IS CCW LEAD END
NON-REVERSIBLE
3 MFD, 440 VAC, CAP

DRAWING NO.	PAGE 1 of 1	REV.
28DV55A		-

Dayton[®]**DIRECT DRIVE
FAN MOTOR****HP:** 1/20**VOLTS:** 115**AMPS:** 1.0**RPM:** 1550**DUTY:** CONT**SF:** 1.0**KVA CODE:** F**ENCL:** TEAO**THERMALLY PROTECTED:** AUTOMFG. NO. PROT. CODE: **7A010** **MTR REF:** K48HXGFW-4306Part
No **28DV55A****PH:** 1**HZ:** 60**FR:** 42Y**INS CL:** B**AMB:** 40 °C**SFA:**AVG. F.L.
EFF.**Disconnect Power Before Making
Any Electrical Connections or Changes****CONNECTIONS****COM - WHITE****HIGH - BLACK**

E37403



258501

**ROTATION IS CCW LEAD END
NON-REVERSIBLE
3 MFD, 440 VAC, CAP****Mfd for Dayton Electric Mfg. Co., Lake Forest, IL 60045 USA****Made in Mexico**