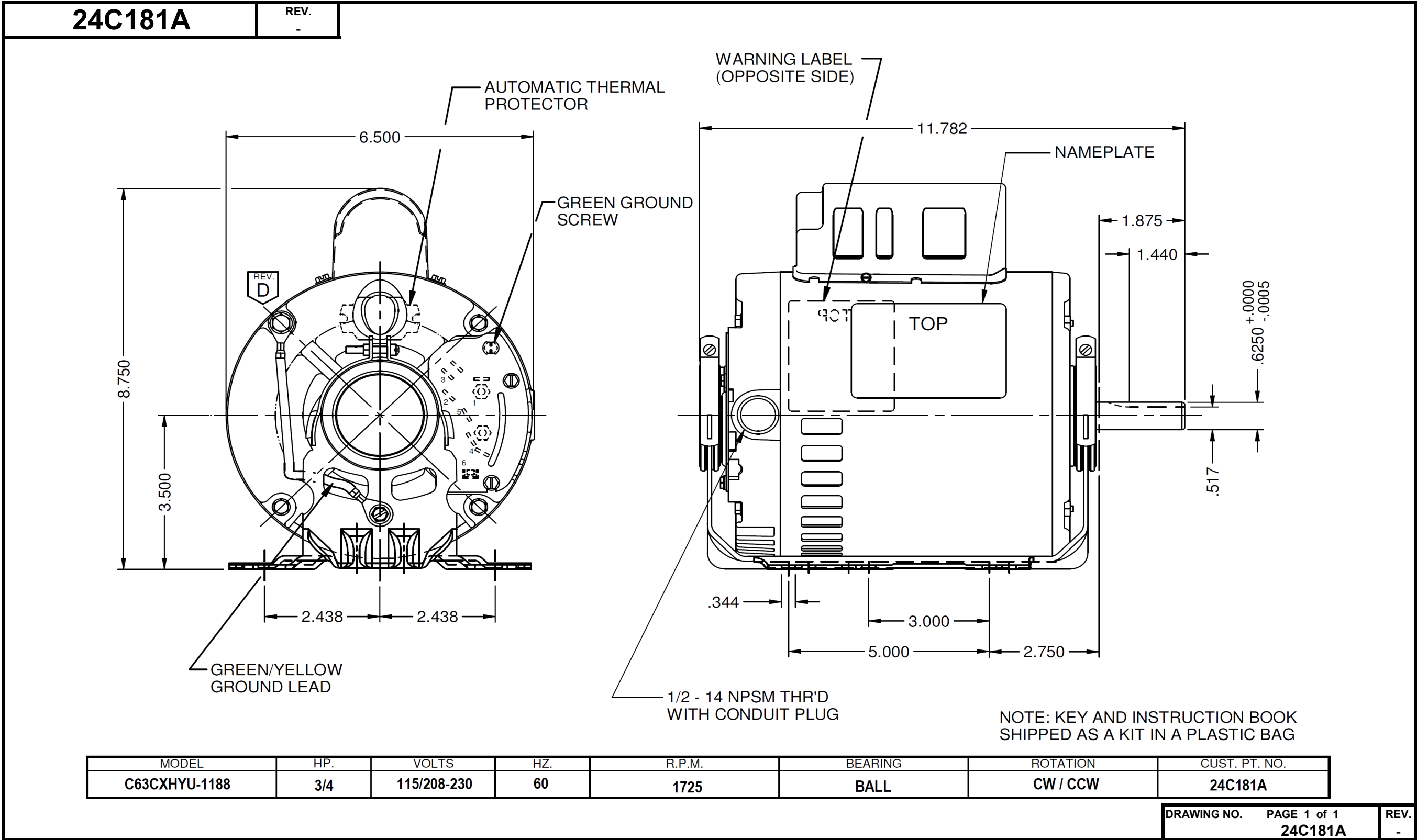


Dimensional Drawing



Performance Data



24C181A

REV.

-

SPLIT-PHASE & CAPACITOR START MOTOR PERFORMANCE

HP:	3/4						
Poles:	4						
Ambient (°C)	40						
Altitude (FASL):							
No. of Speeds:	1						
Volts:	115/208-230	115	208	230			
HZ:	60	60	60	60			
Service Factor:	1.25						
Efficiency:	@ Rated Load	68.3	65.1	65.7			
Power Factor:	@ Rated Load	67.8	62.8	73.7			
Amps:	@ No Load	6.9	2.9	3.4			
	@ Rated Load	9.8	5.2	5			
	@ Service Factor	11.5	6.5	5.9			
	@ Locked Rotor	57.7	25.9	29.5			
RPM:	@ Rated Load	1744	1723	1742			
Torques: Oz.Ft. / Lb.In. (Circle One)	Breakdown	84.4	66.1	82.1			
	Locked Rotor	130.8	94.7	111.7			
	Pull-Up	130.8	92	111.1			
	Rated Load	36.1	36.6	36.2			
	Service Factor	45.6	46.5	45.7			
Watts:	@ Rated Load	819	860	851			
KVA Code:		K					
Temperature Rise:	@ Rated Load	44	48.1	46.6			
	@ Service Factor	60.7	81.7	64.2			
Thermal Protector:	Trip Temp (°C)	78.7	147.6	150.3			
Winding Material:	Start (Auxiliary)				Cu		
	Run (Main)				Cu		
Capacitor(s):	Start Micro-Farads Rating				512 uf		
	Start Voltage Rating				125 V		
	No. of Start Capacitors				1		
	Run Micro-Farads Rating						
	Run Voltage Rating						
	No. of Run Capacitors						

LOW SPEED PERFORMANCE DATA:

HP:							
Poles:							
Volts:							
HZ:							
Efficiency:	@ Rated Load						
Power Factor:	@ Rated Load						
Amps:	@ No Load						
	@ Rated Load						
	@ Service Factor						
	@ Locked Rotor						
Torques: Oz.Ft. / Lb.In. (Circle One)	Breakdown						
	Locked Rotor						
	Pull-Up						
	Rated Load						
	Service Factor						
Watts:	@ Rated Load						
Temperature Rise:	@ Rated Load						
	@ Service Factor						

DRAWING NO. PAGE 1 of 1

REV.

24C181A

-

Dayton Electric Mfg. Co. Lake Forest, IL 60045 USA

Performance Data



24C181A	REV. -
----------------	-----------

Dayton Manufacturing Company

Motor Description

Model: C063CXJBV1149
 Motor ID: Motor #1
 Poles: 4
 Volts: 115/230&110/220
 Frequency: 60&50
 HP: .75
 Speed: 1725&1425
 Phase: 1
 Protector: CEJ54CY

Test Conditions

Test Type: Start
 Test Number: 1
 Poles: 4
 Volts: 115
 Hz: 60
 Rotation:
 Special Cond: 2 Line
 Speed Conn:
 TestBoard: Amtps Performance Fixture #3
 Environment: 21.4 Deg C 58 % RH 995 hPa
 Tested: 5/3/2012 10:29:34 AM
 Tested By: Sharp, Gerald
 Bearing Friction: -0.51 Oz-Ft
 Windage Torque: -1.40 Oz-Ft

Special Points	Vline (V)	Iline (A)	Watts	RPM	Tq (Oz-ft)	HP	Eff (%)	PF (%)
	115.0	57.27	6220	14	134.16	0.022	0.3	94.4
PUT OZ-FT	115.0	57.46	6238	17	131.76	0.026	0.3	94.4
	115.0	57.37	6234	42	135.34	0.067	0.8	94.5
	115.0	57.13	6211	189	136.57	0.308	3.7	94.5
	115.0	57.03	6214	345	138.69	0.570	6.8	94.8
	115.0	56.54	6178	486	145.42	0.842	10.2	95.0
	115.0	56.06	6116	613	150.56	1.098	13.4	94.9
	115.0	56.46	6170	728	154.94	1.344	16.2	95.0
	115.0	56.69	6217	833	162.01	1.606	19.3	95.4
	115.0	56.55	6231	929	166.78	1.844	22.1	95.8
	115.0	56.38	6226	1016	170.82	2.066	24.8	96.0
	115.0	56.22	6230	1096	173.25	2.261	27.1	96.4
	115.0	56.06	6222	1170	173.92	2.423	29.1	96.5
	115.0	55.92	6229	1237	173.80	2.558	30.6	96.9
	115.0	38.92	3699	1284	68.37	1.045	21.1	82.6
	115.0	34.28	3161	1330	72.06	1.141	26.9	80.2
	115.0	32.09	2997	1390	77.19	1.277	31.8	81.2
	115.0	29.96	2832	1445	79.64	1.370	36.1	82.2
	115.0	27.83	2659	1491	81.25	1.442	40.5	83.1
	115.0	25.77	2480	1531	81.61	1.487	44.7	83.7
	115.0	23.75	2294	1566	80.33	1.498	48.7	84.0
	115.0	21.69	2103	1599	77.47	1.475	52.3	84.3
	115.0	19.62	1900	1629	73.68	1.428	56.1	84.2
	115.0	17.60	1698	1655	69.21	1.364	59.9	83.9
	115.0	15.68	1494	1680	62.59	1.252	62.5	82.9
	115.0	13.77	1282	1702	55.50	1.125	65.5	81.0
	115.0	11.95	1066	1724	46.60	0.956	66.9	77.6
	115.0	10.12	836	1745	36.25	0.753	67.2	71.8
	115.0	8.62	612	1764	25.32	0.532	64.8	61.7
	115.0	7.45	380	1783	12.46	0.265	52.0	44.3
	115.0	6.99	161	1800	0.00	0.000	0.0	20.0

DRAWING NO.	PAGE 1 of 8	REV.
	24C181A	-

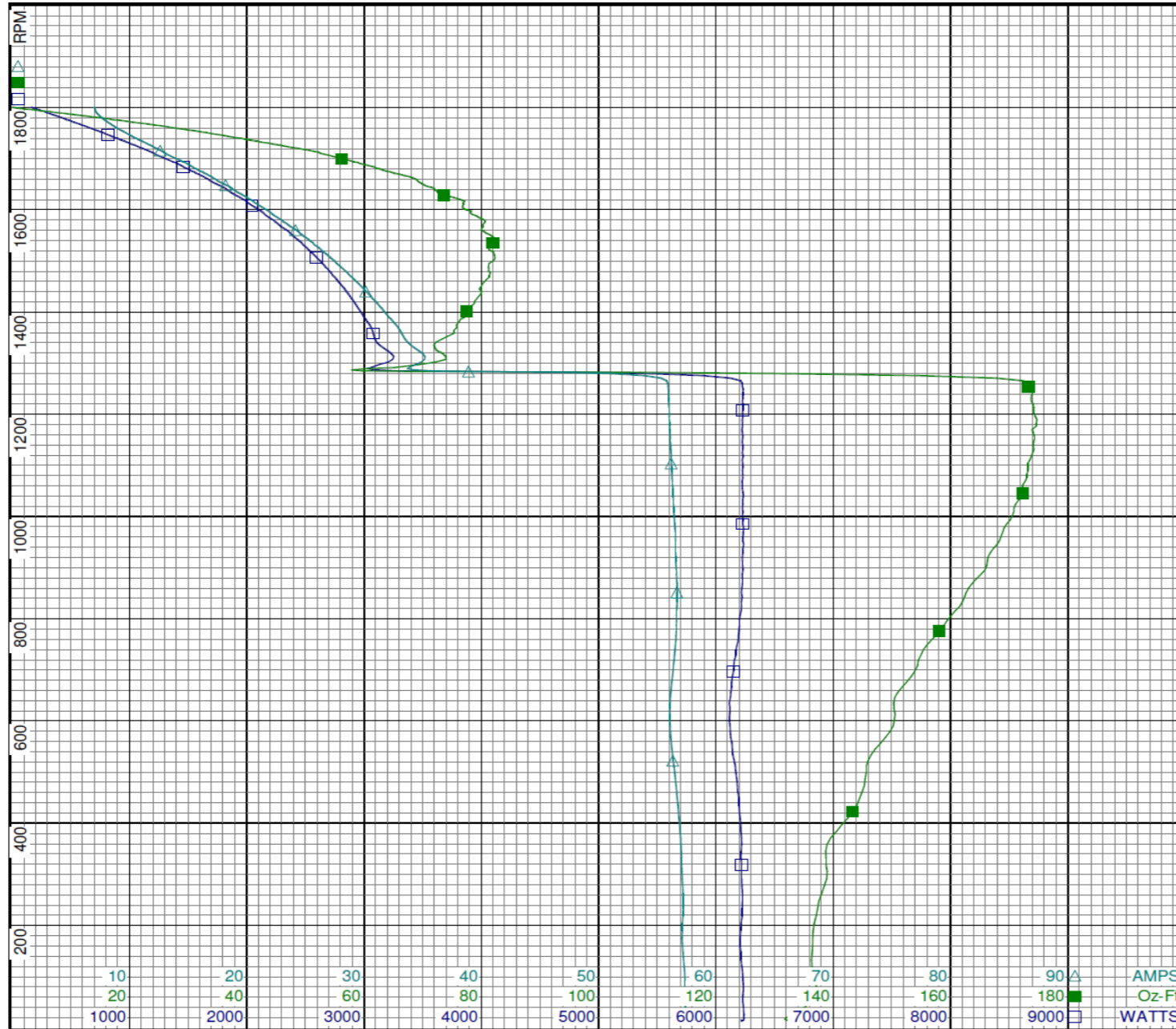
Dayton Electric Mfg. Co. Lake Forest, IL 60045 USA

Performance Data



24C181A

REV.
-



Curve Descriptions:
Motor(1) Test 1 Start 115V 60 Hz 4P
2 Line

- SPEED vs WATTS
- SPEED vs TORQUE
- △ SPEED vs IL

Motor Ratings:
(1) C063CXJBV1149 ID: Motor #1

10 20 30 40 50 60 70 80 90 AMPS
20 40 60 80 100 120 140 160 180 Oz-Ft
1000 2000 3000 4000 5000 6000 7000 8000 9000 WATTS

DRAWING NO.	PAGE 2 of 8	REV.
24C181A		-

Dayton Electric Mfg. Co. Lake Forest, IL 60045 USA



Performance Data



24C181A	REV. -
----------------	-----------

Dayton Manufacturing Company

Motor Description

Model: C063CXJBV1149
Motor ID: Motor #1
Poles: 4
Volts: 115/230&110/220
Frequency: 60&50
HP: .75
Speed: 1725&1425
Phase: 1
Protector: CEJ54CY

Test Conditions

Test Type: Run
Test Number: 3
Poles: 4
Volts: 115
Hz: 60
Rotation:
Special Cond: 2 Line
Speed Conn:
TestBoard: Amps Performance Fixture #3
Environment: 21.4 Deg C 58 % RH 995 hPa
Tested: 5/3/2012 10:16:26 AM
Tested By: Sharp, Gerald
Bearing Friction: -0.51 Oz-Ft
Windage Torque: -1.40 Oz-Ft

Special Points	Vline (V)	Iline (A)	Watts	RPM	Tq (Oz-ft)	HP	Eff (%)	PF (%)
	115.0	6.70	146	1794	0.00	0.000	0.0	19.0
	115.0	7.27	400	1776	14.33	0.303	56.5	47.8
	115.0	8.76	669	1755	28.80	0.602	67.1	66.4
0.75 HP	115.0	9.84	819	1744	36.12	0.750	68.3	72.4
36.52 OZ-FT	115.0	9.91	828	1743	36.52	0.758	68.3	72.6
	115.0	10.52	906	1737	40.06	0.828	68.2	74.8
0.938 HP	115.0	11.50	1031	1726	45.63	0.938	67.8	77.9
1725 RPM	115.0	11.56	1038	1725	45.93	0.943	67.8	78.1
45.65 OZ-FT	115.0	11.51	1032	1726	45.65	0.938	67.8	78.0
	115.0	12.24	1122	1717	49.49	1.011	67.3	79.7
	115.0	14.36	1363	1695	58.89	1.188	65.1	82.5
	115.0	16.57	1602	1670	67.34	1.339	62.3	84.1
	115.0	18.60	1814	1645	72.46	1.419	58.4	84.8
	115.0	20.63	2015	1618	78.48	1.512	56.0	84.9
	115.0	22.73	2214	1589	80.69	1.526	51.4	84.7
	115.0	24.76	2395	1557	82.74	1.534	47.8	84.1
BDT OZ-FT	115.0	26.14	2518	1534	84.43	1.542	45.7	83.8
	115.0	26.74	2570	1523	83.77	1.518	44.1	83.6
	115.0	28.65	2731	1485	83.49	1.476	40.3	82.9
	115.0	30.52	2882	1444	81.46	1.401	36.3	82.1
	115.0	32.28	3018	1400	78.25	1.305	32.2	81.3
	115.0	33.97	3140	1352	74.75	1.204	28.6	80.4
	115.0	35.58	3247	1300	70.17	1.086	25.0	79.4
	115.0	37.09	3347	1244	64.50	0.955	21.3	78.5
	115.0	38.49	3430	1184	58.15	0.819	17.8	77.5
	115.0	39.80	3507	1117	51.16	0.680	14.5	76.6
	115.0	41.00	3566	1046	43.65	0.543	11.4	75.6
	115.0	42.11	3617	970	35.35	0.408	8.4	74.7
	115.0	43.12	3655	888	25.62	0.271	5.5	73.7
	115.0	44.04	3676	800	15.18	0.145	2.9	72.6
	115.0	47.24	4119	706	30.25	0.254	4.6	75.8
	115.0	55.90	6089	628	146.30	1.093	13.4	94.7
	115.0	56.06	6121	532	145.61	0.922	11.2	95.0
	115.0	56.74	6200	411	141.10	0.691	8.3	95.0
	115.0	57.25	6241	282	135.90	0.456	5.5	94.8
	115.0	57.32	6236	146	133.66	0.232	2.8	94.6

DRAWING NO.	PAGE 3 of 8	REV.
	24C181A	-

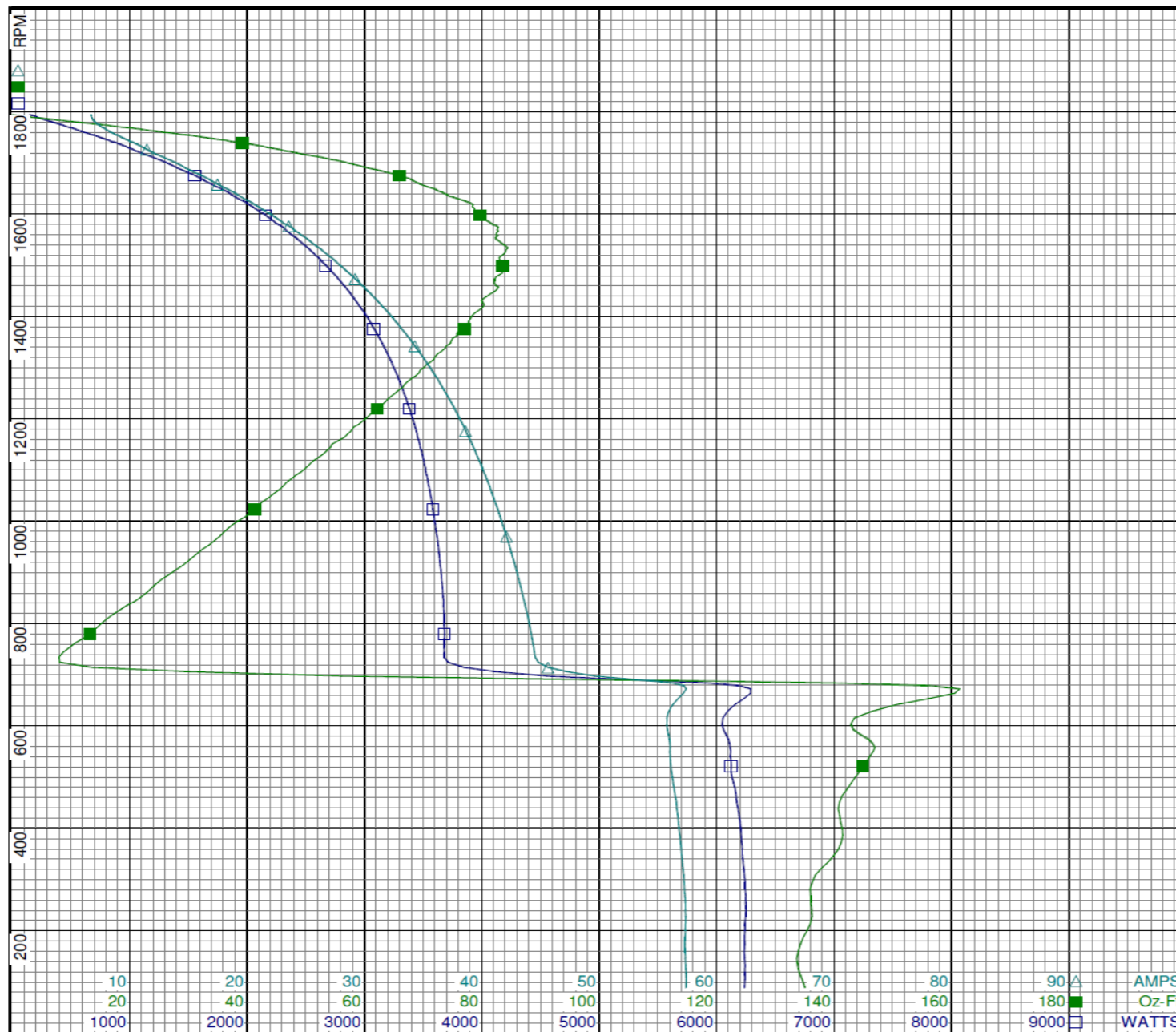
Performance Data



24C181A

REV.

-



Curve Descriptions:

Motor(1) Test 3 Run 115V 60 Hz 4P
2 Line

- SPEED vs WATTS
- SPEED vs TORQUE
- △ SPEED vs ILine

Motor Ratings:

(1) C063CXJBV1149 ID: Motor #1

DRAWING NO.	PAGE 4 of 8	REV.
24C181A		-

Dayton Electric Mfg. Co. Lake Forest, IL 60045 USA

Performance Data



24C181A REV.
-

Dayton Manufacturing Company

Motor Description

Model: C063CXJBV1149
 Motor ID: Motor #1
 Poles: 4
 Volts: 115/230&110/220
 Frequency: 60&50
 HP: .75
 Speed: 1725&1425
 Phase: 1
 Protector: CEJ54CY

Test Conditions

Test Type: Start
 Test Number: 11
 Poles: 4
 Volts: 230
 Hz: 60
 Rotation:
 Special Cond: 2 Line
 Speed Conn:
 TestBoard: Amtps Performance Fixture #3
 Environment: 21.2 Deg C 50 % RH 993 hPa
 Tested: 5/2/2012 12:15:08 PM
 Tested By: Sharp, Gerald
 Bearing Friction: -0.55 Oz-Ft
 Windage Torque: -2.27 Oz-Ft

Special Points	Vline (V)	Iline (A)	Watts	RPM	Tq (Oz-ft)	HP	Eff (%)	PF (%)
	230.0	28.91	6024	14	114.54	0.019	0.2	90.6
PUT OZ-FT	230.0	28.94	6036	12	111.59	0.017	0.2	90.7
	230.0	28.88	6026	40	114.61	0.055	0.7	90.7
	230.0	28.77	6002	189	113.45	0.255	3.2	90.7
	230.0	28.60	5982	345	119.89	0.492	6.1	91.0
	230.0	28.25	5933	485	125.55	0.725	9.1	91.3
	230.0	27.96	5860	612	128.52	0.936	11.9	91.1
	230.0	28.14	5900	726	130.22	1.126	14.2	91.2
	230.0	28.19	5953	833	136.88	1.357	17.0	91.8
	230.0	28.07	5969	929	142.54	1.577	19.7	92.4
	230.0	27.88	5962	1016	146.58	1.773	22.2	93.0
	230.0	27.66	5941	1097	149.63	1.954	24.5	93.4
	230.0	27.38	5896	1170	150.51	2.097	26.5	93.6
	230.0	27.14	5871	1237	149.98	2.208	28.1	94.1
	230.0	20.01	3816	1287	69.13	1.060	20.7	82.9
	230.0	17.23	3173	1335	70.03	1.113	26.2	80.1
	230.0	16.12	3008	1394	74.74	1.240	30.8	81.1
	230.0	15.06	2844	1447	77.85	1.341	35.2	82.1
	230.0	14.00	2669	1493	78.36	1.393	38.9	82.9
	230.0	12.97	2494	1532	78.42	1.430	42.8	83.6
	230.0	11.95	2311	1568	77.22	1.442	46.5	84.1
	230.0	10.88	2110	1600	74.96	1.428	50.5	84.3
	230.0	9.89	1921	1629	72.60	1.408	54.7	84.4
	230.0	8.88	1712	1656	66.46	1.310	57.1	83.8
	230.0	7.89	1507	1680	61.02	1.220	60.4	83.0
	230.0	6.92	1294	1703	53.30	1.081	62.3	81.3
	230.0	5.95	1072	1724	45.26	0.929	64.7	78.3
	230.0	5.07	845	1745	34.88	0.724	64.0	72.5
	230.0	4.30	628	1762	24.29	0.510	60.6	63.5
	230.0	3.74	404	1781	12.14	0.258	47.5	47.0
	230.0	3.49	196	1798	0.00	0.000	0.0	24.5

DRAWING NO. PAGE 5 of 8 REV.
 24C181A -

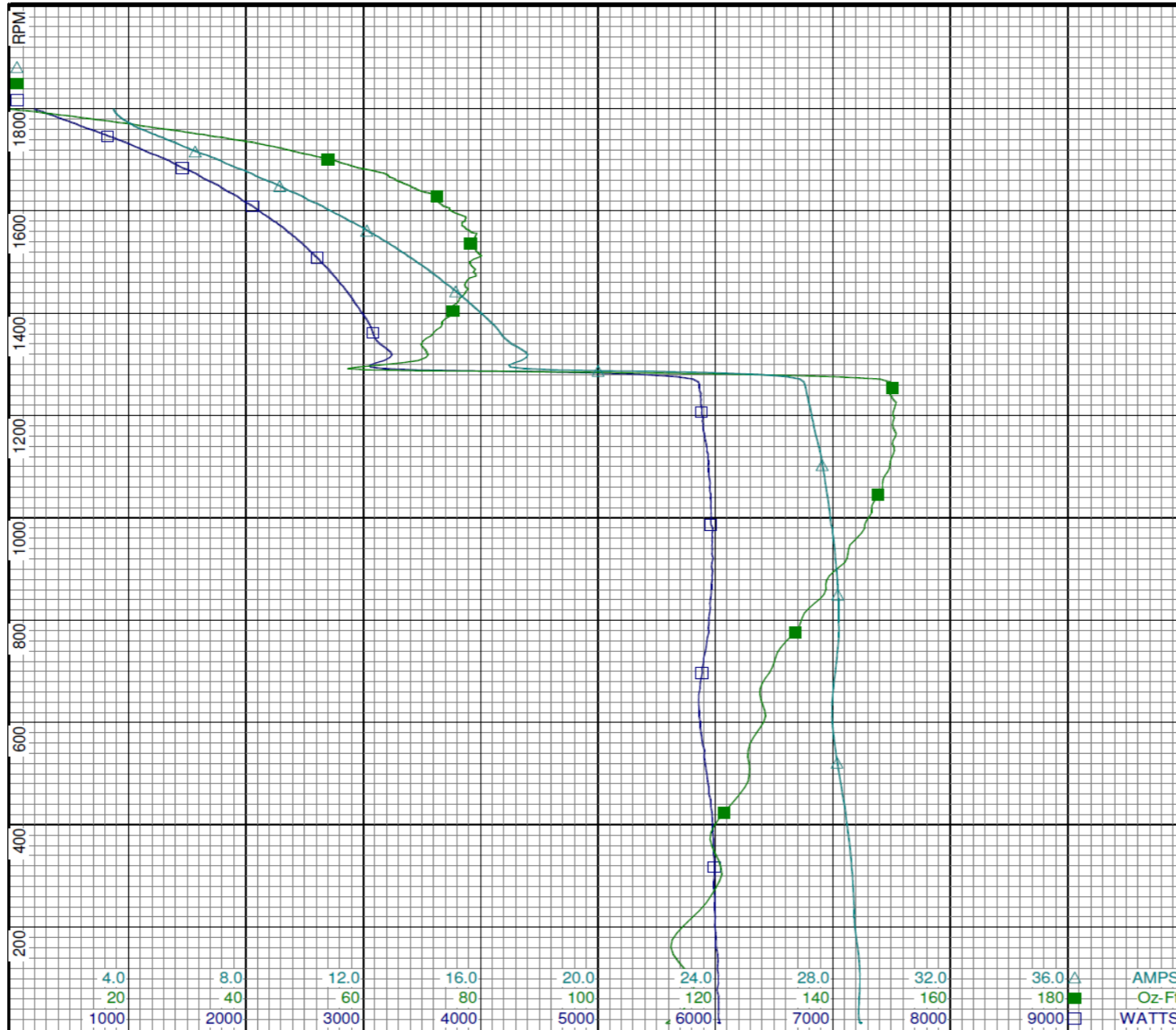
Performance Data



24C181A

REV.

-



Curve Descriptions:

Motor(1) Test 11 Start 230V 60 Hz 4P
2 Line

- SPEED vs WATTS
- SPEED vs TORQUE
- △ SPEED vs ILine

Motor Ratings:

(1) C063CXJBV1149 ID: Motor #1

DRAWING NO.	PAGE 6 of 8	REV.
24C181A		-

Dayton Electric Mfg. Co. Lake Forest, IL 60045 USA

Performance Data



24C181A	REV. -
----------------	-----------

Dayton Manufacturing Company

Motor Description

Model: C063CXJBV1149
Motor ID: Motor #1
Poles: 4
Volts: 115/230&110/220
Frequency: 60&50
HP: .75
Speed: 1725&1425
Phase: 1
Protector: CEJ54CY

Test Conditions

Test Type: Run
Test Number: 13
Poles: 4
Volts: 230
Hz: 60
Rotation:
Special Cond: 2 Line
Speed Conn:
TestBoard: Amtps Performance Fixture #3
Environment: 21.4 Deg C 53 % RH 992 hPa
Tested: 5/2/2012 10:34:21 AM
Tested By: Sharp, Gerald
Bearing Friction: -0.56 Oz-Ft
Windage Torque: -2.05 Oz-Ft

Special Points	Vline (V)	Iline (A)	Watts	RPM	Tq (Oz-ft)	HP	Eff (%)	PF (%)
	230.0	3.34	164	1795	0.00	0.000	0.0	21.3
	230.0	3.66	419	1776	14.14	0.299	53.2	49.8
	230.0	4.36	666	1757	27.30	0.571	64.0	66.4
0.75 HP	230.0	5.02	851	1742	36.17	0.750	65.7	73.7
36.52 OZ-FT	230.0	5.05	859	1741	36.52	0.757	65.8	73.9
	230.0	5.23	905	1737	38.65	0.799	65.9	75.2
1725 RPM	230.0	5.81	1047	1725	45.00	0.924	65.8	78.4
0.938 HP	230.0	5.88	1063	1724	45.69	0.938	65.8	78.7
45.65 OZ-FT	230.0	5.87	1062	1724	45.65	0.937	65.8	78.7
	230.0	6.15	1127	1718	48.33	0.988	65.4	79.7
	230.0	7.20	1372	1694	58.21	1.174	63.9	82.8
	230.0	8.23	1590	1670	64.73	1.287	60.4	84.0
	230.0	9.26	1801	1645	71.10	1.392	57.7	84.6
	230.0	10.27	2002	1619	75.32	1.452	54.1	84.8
	230.0	11.36	2209	1589	79.61	1.506	50.9	84.6
	230.0	12.37	2396	1557	80.43	1.491	46.4	84.3
	230.0	13.36	2569	1523	80.68	1.462	42.5	83.6
BDT OZ-FT	230.0	13.86	2653	1504	82.11	1.470	41.3	83.2
	230.0	14.33	2731	1485	80.23	1.418	38.8	82.9
	230.0	15.26	2882	1445	78.87	1.357	35.1	82.1
	230.0	16.15	3017	1400	76.63	1.278	31.6	81.2
	230.0	17.01	3143	1352	73.00	1.175	27.9	80.3
	230.0	17.81	3251	1300	68.24	1.056	24.2	79.3
	230.0	18.57	3347	1245	62.76	0.930	20.7	78.3
	230.0	19.29	3435	1183	56.57	0.797	17.3	77.4
	230.0	19.94	3503	1118	49.54	0.659	14.0	76.4
	230.0	20.56	3569	1046	42.14	0.525	11.0	75.5
	230.0	21.11	3617	970	34.25	0.395	8.2	74.5
	230.0	21.63	3654	888	23.98	0.253	5.2	73.4
	230.0	22.09	3679	800	14.29	0.136	2.8	72.4
	230.0	24.75	4490	708	52.81	0.445	7.4	78.9
	230.0	27.88	5825	625	123.10	0.916	11.7	90.8
	230.0	28.00	5867	528	125.54	0.790	10.0	91.1
	230.0	28.36	5957	408	121.89	0.592	7.4	91.3
	230.0	28.59	5996	279	116.23	0.386	4.8	91.2
	230.0	28.67	5995	143	113.40	0.194	2.4	90.9

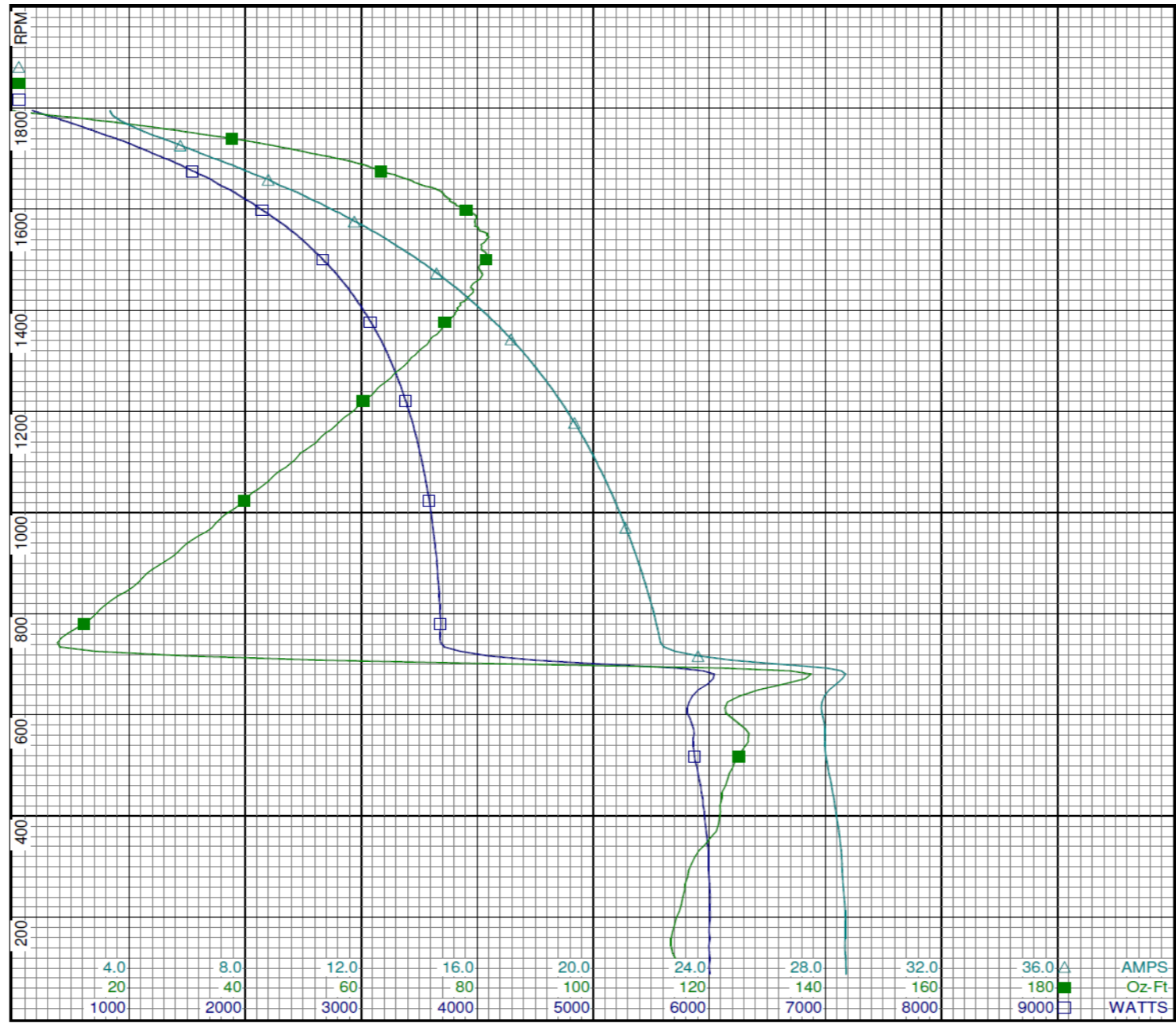
DRAWING NO.	PAGE 7 of 8	REV.
	24C181A	-

Dayton Electric Mfg. Co. Lake Forest, IL 60045 USA

Performance Data



24C181A REV. -



Dayton

Curve Descriptions:
 Motor(1) Test 13 Run 230V 60 Hz 4P
 2 Line

- SPEED vs WATTS
- SPEED vs TORQUE
- △ SPEED vs ILine

Motor Ratings:
 (1) C063CXJBV1149 ID: Motor #1

DRAWING NO.	PAGE 8 of 8	REV.
	24C181A	-

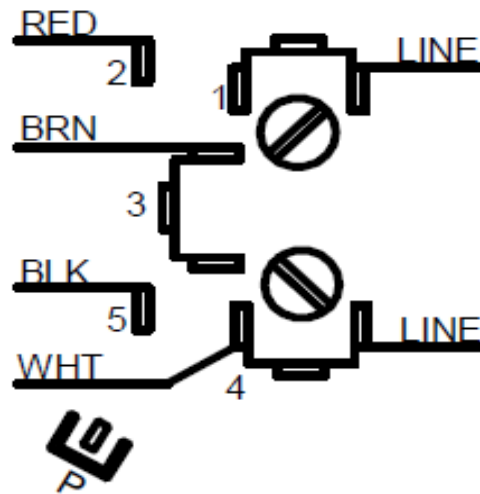
Dayton Electric Mfg. Co. Lake Forest, IL 60045 USA

24C181A

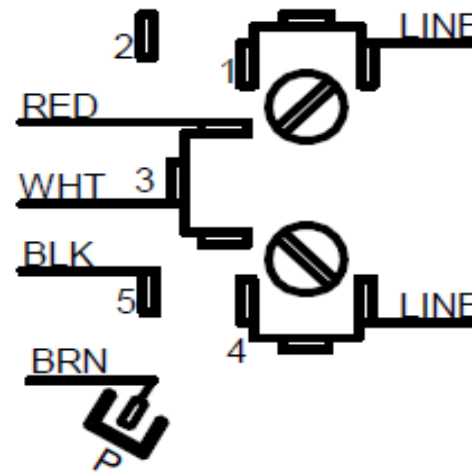
REV.
-

CONNECTIONS

115 VOLTS



208 - 230 VOLTS



MOTOR IS CCW ROTATION LEAD END
TO REVERSE ROTATION INTERCHANGE
RED AND BLACK LEADS

DRAWING NO.	PAGE 1 of 1	REV.
24C181A		-

Dayton[®]

BELT DRIVE FAN & BLOWER MOTOR

HP: 3/4

VOLTS: 115/208-230

AMPS: 9.8/5.2-5.0

RPM: 1725

DUTY: CONT

SF: 1.25

KVA CODE: K

ENCL: ODP

THERMALLY PROTECTED: AUTO

MFG. NO. PROT. CODE:

MTR REF: C63CXHYU-1188

Part No 24C181A



PH: 1

HZ: 60

FR: 56H

INS CL: B

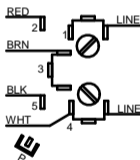
AMB: 40 °C

SFA: 11.5/6.5-6.0

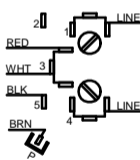
AVG. F.L.
EFF.**Disconnect Power Before Making Any
Electrical Connections or Changes**

CONNECTIONS

115 VOLTS



208 - 230 VOLTS

MOTOR IS CCW ROTATION LEAD END
TO REVERSE ROTATION INTERCHANGE
RED AND BLACK LEADS

Mfd for Dayton Electric Mfg. Co., Lake Forest, IL 60045 USA

Made in Mexico