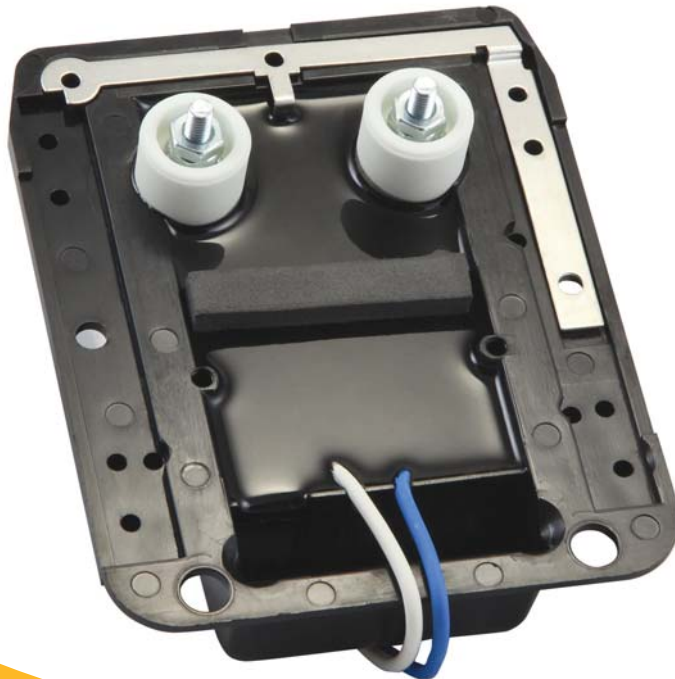


OMNI[®] Universal Ignitor

The Only Universal Ignitor

OMNI[®] mounts onto any previously installed ignitor mounting plates and eliminates need for extra mounting plates. It makes your service calls quick and easy, and ships complete with required hardware.

Absolute Maximum Ratings	2270	2275	2280
Model #	2270	2275	2280
Input Supply Voltage (V)	12 Vdc	108-132	216-252
Input Current (A)	2.5		
Input Supply Frequency (Hz)		50/60	50/60
Primary Voltage - Amperes (VA)		86.5	86.5
Secondary Voltage (kV peak)	20.0	17.5	17.5
Secondary Frequency (kHz)	>18	20	20
Secondary Short Circuit Current (mA)	20	45	45
Storage Temperature (degrees C)	-40 to +80	-40 to +80	-40 to +80
Operating Temperature (degrees C)	-30 to +65	-30 to +40	-30 to +40
Operating Relative Humidity (%)	90	90	90
Loading Air Gap (inches)	1/16 - 3/16	1/16 - 3/16	1/16 - 3/16



www.allanson.com

USA | 99 Adams Blvd. | Farmingdale, New York | 11735
 Phone: 631-293-3880 | Fax 1-631-293-3470

CANADA | 33 Cranfield Road | Toronto, Ontario | M4B 3H2
 Phone: 416-755-1191 | Toll-Free 1-877-264-8444 | Fax 1-877-278-0907