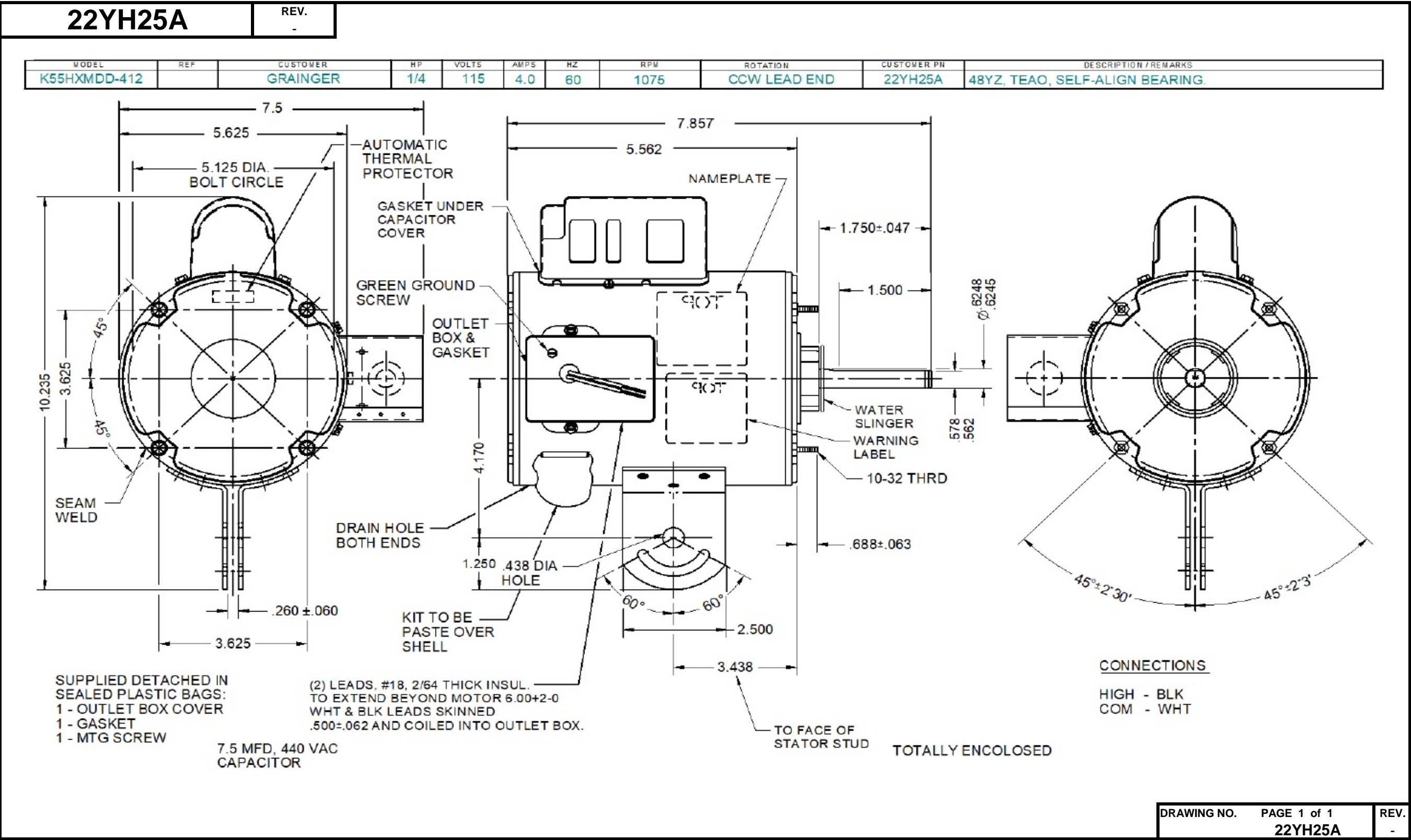


Dimensional Drawing



DRAWING NO.

PAGE 1 of 1

REV.

22YH25A

-

# Performance Data



**22YH25A**

REV.  
-

## MOTOR PERFORMANCE

<b>HP:</b>	1/4HP							
<b>Poles:</b>	6							
<b>No. of Speeds:</b>	1							
<b>Volts:</b>	115	115						
<b>HZ:</b>	60	60						
<b>Service Factor:</b>	1							
<b>Efficiency:</b>	@ Rated Load	78						
<b>Power Factor:</b>	@ Rated Load	7.7						
<b>Amps:</b>	@ No Load							
	@ Rated Load	3.7						
	@ Service Factor							
	@ Locked Rotor	10.3						
<b>RPM:</b>	@ Rated Load	1127						
<b>Ambient (°C):</b>	40							
<b>Altitude (FASL):</b>								
<b>Torques:</b>	Breakdown	35.9						
	Locked Rotor	8.2						
	Pull-Up	7.3						
	Rated Load	19.5						
	Service Factor							
<b>Watts:</b>	Rated Load	329						
<b>KVA Code:</b>								
<b>Temperature Rise:</b>	@ Rated Load							
	@ Service Factor							
<b>Thermal Protector:</b>	Trip Temp (°C)							
<b>Winding Material:</b>	Start (Auxiliary)	Cu						
	Run (Main)	Cu						
<b>Capacitor(s):</b>	Start (MFD / Volts)	N/A						
	No. of Start Capacitors							
	Run (MFD / Volts)	N/A						
	No. of Run Capacitors							

### LOW SPEED PERFORMANCE DATA:

<b>HP:</b>	1/3HP							
<b>Poles:</b>	6							
<b>Volts:</b>		115						
<b>HZ:</b>		60						
<b>Efficiency:</b>	@ Rated Load							
<b>Power Factor:</b>	@ Rated Load							
<b>Amps:</b>	@ No Load							
	@ Rated Load							
	@ Service Factor							
	@ Locked Rotor							
<b>Torques:</b>	Breakdown							
	Locked Rotor							
	Pull-Up							
	Rated Load							
	Service Factor							
<b>Watts:</b>	@ Rated Load							
<b>Temperature Rise:</b>	@ Rated Load							
	@ Service Factor							

DRAWING NO.	PAGE 1 of 1	REV.
	22YH25A	-

**Dayton Electric Mfg. Co. Lake Forest, IL 60045 USA**

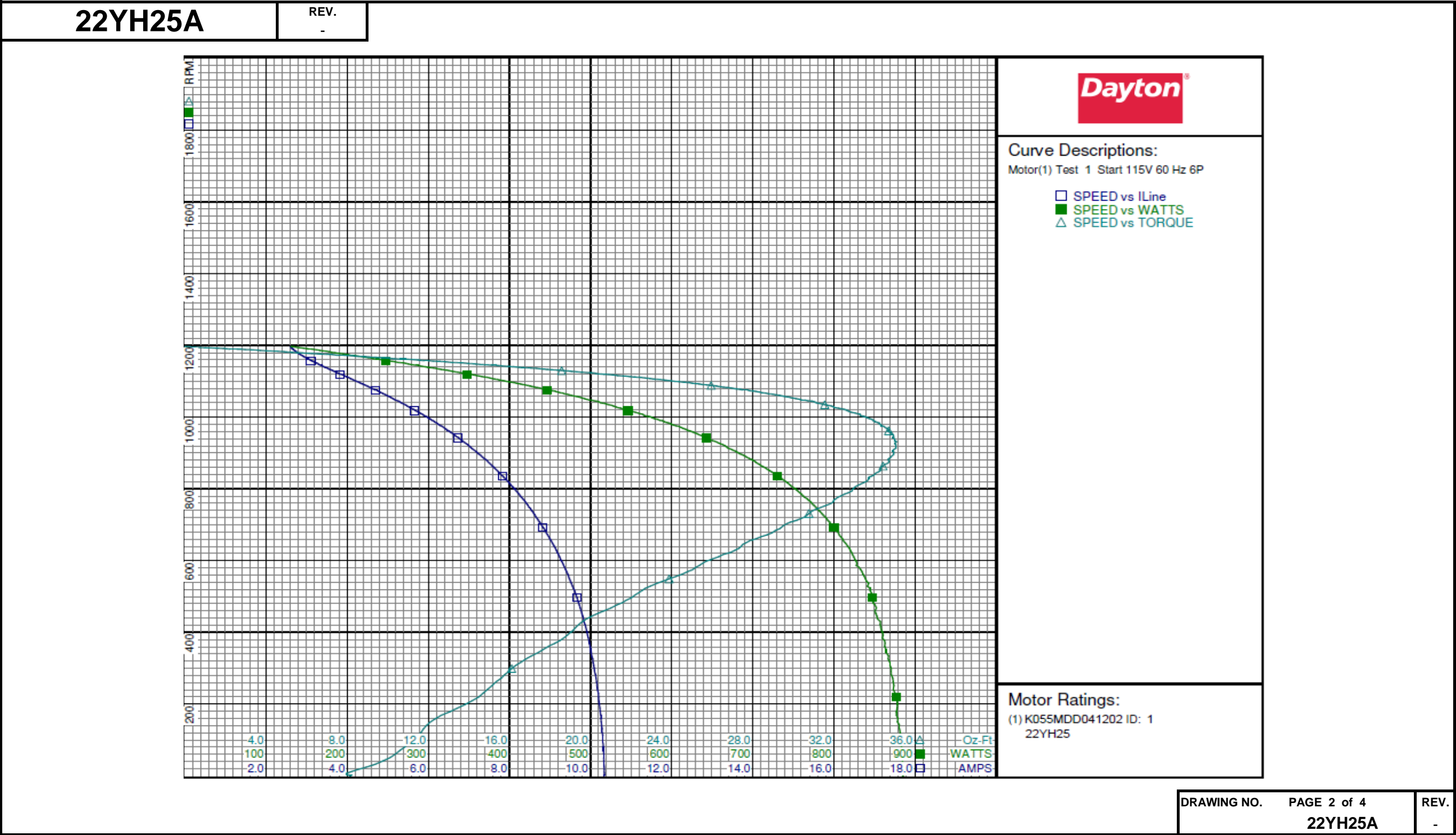
# Performance Data



22YH25A		REV. -											
Dayton Manufacturing Company													
Motor Description				Test Conditions									
Model:	K055MDD041202 22YH25			Test Type:	Start		Run Cap:	0					
Motor ID:	1			Test Number:	1		Start Cap:	7.5µfd/440VAC					
Poles:	6			Poles:	6		Environment:						
Volts:	115			Volts:	115		Tested:	6/30/2009 2:57:21 PM					
Frequency:	60			Hz:	60		Tested By:	Sharp, Gerald					
HP:	1/4			Rotation:			Gear Ratio:	1:1					
Speed:	1075			Special Cond:			Bearing Friction:	-0.57 Oz-Ft					
Phase:	1			Speed Conn:			Windage Torque:	-2.32 Oz-Ft					
Protector:	AUTO			TestBoard:	Amps Performance		Fixture #4						
Special Points	Vline (V)	Vaux (V)	Vcap (V)	Iline (A)	Imain (A)	Iaux (A)	Watts	RPM	Tq(Oz-ft)	HP	Eff(%)	PF (%)	Cap
	115.0	51.1	146.8	10.340	10.509	0.432	885.8	1	8.15	0.000	0.0	74.5	7.8
	115.0	51.1	146.5	10.340	10.511	0.431	887.0	4	7.94	0.000	0.0	74.6	7.8
	115.0	51.3	145.9	10.340	10.509	0.428	884.7	17	8.50	0.002	0.1	74.4	7.8
	115.0	55.4	139.1	10.284	10.411	0.408	881.7	121	11.65	0.017	1.4	74.6	7.8
	115.0	62.6	134.9	10.194	10.290	0.394	875.7	229	14.69	0.040	3.4	74.7	7.8
	115.0	71.3	131.9	10.027	10.077	0.384	867.5	334	17.08	0.068	5.8	75.2	7.7
	115.0	81.6	130.2	9.863	9.876	0.379	857.2	422	19.43	0.098	8.5	75.6	7.7
	115.0	93.7	131.9	9.643	9.615	0.385	847.4	503	22.19	0.133	11.7	76.4	7.7
	115.0	106.0	135.5	9.388	9.317	0.395	833.0	574	25.03	0.171	15.3	77.2	7.7
	115.0	119.0	140.8	9.109	8.998	0.410	817.4	638	27.42	0.208	19.0	78.0	7.7
	115.0	132.3	147.2	8.803	8.651	0.429	799.5	697	29.49	0.245	22.8	79.0	7.7
	115.0	145.8	155.5	8.482	8.288	0.451	777.8	749	31.38	0.280	26.8	79.7	7.7
	115.0	158.9	164.5	8.144	7.908	0.475	753.7	797	32.93	0.313	30.9	80.5	7.7
	115.0	172.3	174.7	7.798	7.521	0.505	727.9	839	33.99	0.339	34.8	81.2	7.7
	115.0	186.5	186.3	7.437	7.118	0.538	700.4	879	34.70	0.363	38.7	81.9	7.7
	115.0	199.9	198.4	7.066	6.711	0.572	669.9	913	35.07	0.381	42.4	82.4	7.7
	115.0	213.5	210.9	6.704	6.310	0.608	639.6	944	34.95	0.393	45.8	83.0	7.7
	115.0	226.6	223.5	6.344	5.915	0.646	608.7	974	34.45	0.400	49.0	83.4	7.7
	115.0	239.1	236.2	5.994	5.535	0.682	576.5	997	33.65	0.400	51.7	83.6	7.7
	115.0	251.3	248.9	5.638	5.153	0.719	543.0	1021	32.52	0.395	54.3	83.7	7.7
	115.0	263.1	261.1	5.300	4.794	0.755	510.5	1042	31.05	0.385	56.3	83.8	7.7
	115.0	273.3	272.8	4.980	4.460	0.788	476.6	1060	29.35	0.370	58.0	83.2	7.7
	115.0	284.0	284.3	4.664	4.138	0.822	444.7	1077	27.39	0.351	58.9	82.9	7.7
	115.0	293.8	295.7	4.355	3.828	0.855	410.7	1093	25.21	0.328	59.6	82.0	7.7
	115.0	302.5	306.1	4.080	3.561	0.885	378.8	1107	22.93	0.302	59.5	80.7	7.7
	115.0	311.4	316.6	3.801	3.305	0.916	345.5	1121	20.30	0.271	58.5	79.0	7.7
	115.0	319.2	326.2	3.550	3.090	0.943	313.0	1134	17.65	0.238	56.8	76.7	7.7
	115.0	326.9	335.8	3.306	2.902	0.972	279.1	1146	14.64	0.200	53.4	73.4	7.7
	115.0	333.9	344.8	3.088	2.763	0.998	244.9	1159	11.50	0.159	48.3	69.0	7.7
	115.0	340.2	353.9	2.899	2.675	1.024	210.4	1171	8.20	0.114	40.5	63.1	7.7
	115.0	347.7	363.9	2.730	2.641	1.056	174.2	1183	4.47	0.063	26.9	55.5	7.7
	115.0	353.3	374.3	2.616	2.688	1.087	138.6	1194	0.74	0.010	5.6	46.1	7.7
	115.0	354.4	376.1	2.604	2.718	1.095	130.8	1196	0.00	0.000	0.0	43.7	7.7
										DRAWING NO.	PAGE 1 of 4		REV.
										22YH25A			
										-			

Dayton Electric Mfg. Co. Lake Forest, IL 60045 USA

Performance Data



Dayton Electric Mfg. Co. Lake Forest, IL 60045 USA



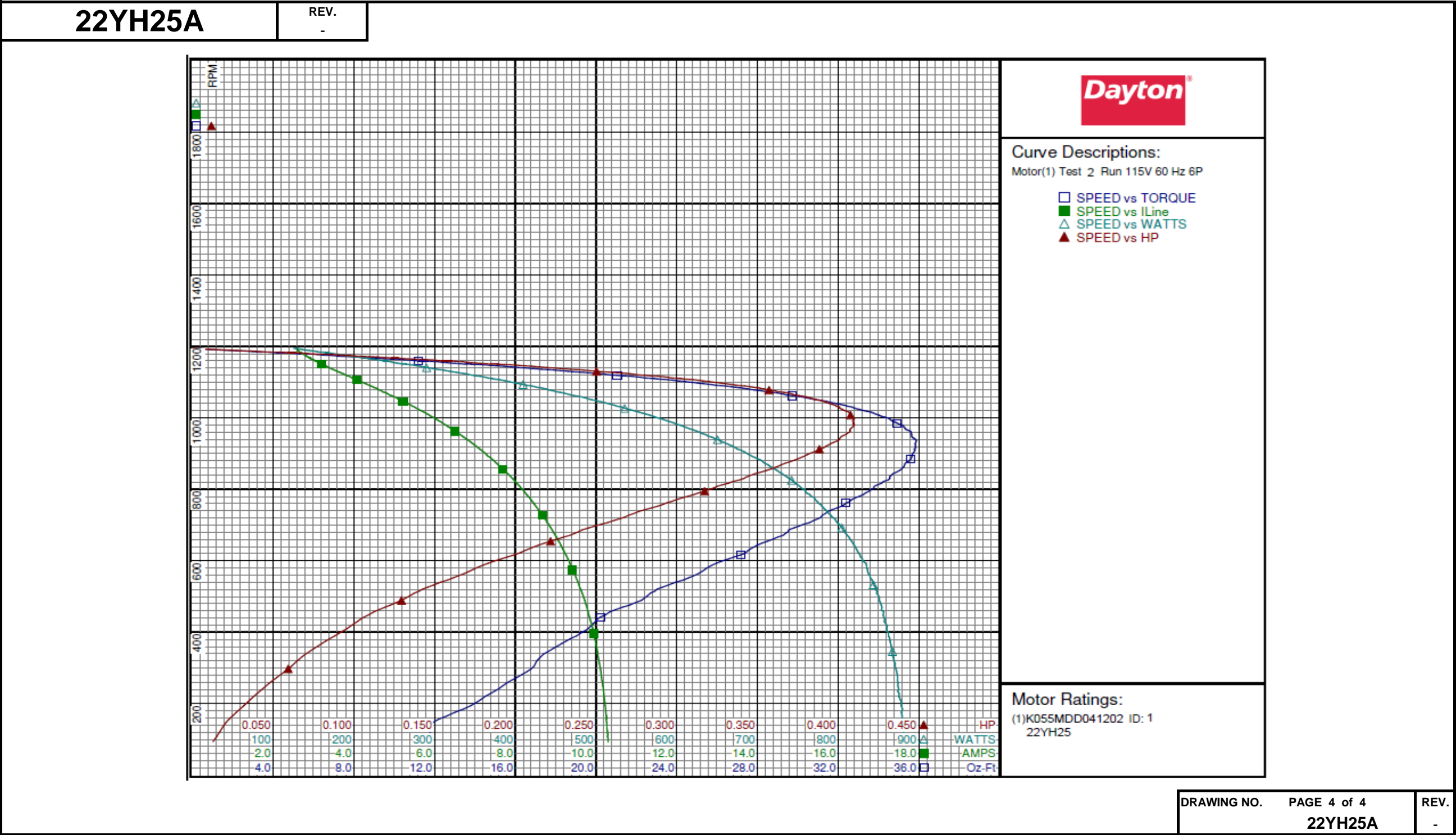
# Performance Data



22YH25A		REV. -												
Dayton Manufacturing Company														
Motor Description				Test Conditions										
Model:		K055MDD041202 22YH25		Test Type:		Run		Run Cap:		0				
Motor ID:		1		Test Number:		2		Start Cap:		7.5µfd/440VAC				
Poles:		6		Poles:		6		Environment:						
Volts:		115		Volts:		115		Tested:		6/30/2009 2:56:25 PM				
Frequency:		60		Hz:		60		Tested By:		Sharp, Gerald				
HP:		1/4		Rotation:				Gear Ratio:		1:1				
Speed:		1075		Special Cond:				Bearing Friction:		-0.61 Oz-Ft				
Phase:		1		Speed Conn:				Windage Torque:		-2.25 Oz-Ft				
Protector:		AUTO		TestBoard:		Amps Performance		Fixture #4						
Special Points		Vline (V)	Vaux (V)	Vcap (V)	Iline (A)	Imain (A)	Iaux (A)	Watts	RPM	Tq(Oz-ft)	HP	Eff (%)	PF (%)	Cap
		115.0	354.6	376.9	2.584	2.720	1.095	125.7	1194	0.00	0.000	0.0	42.3	7.7
		115.0	351.0	370.4	2.632	2.645	1.074	150.8	1187	2.60	0.037	18.2	49.8	7.7
		115.0	345.0	361.0	2.759	2.634	1.045	182.3	1177	5.96	0.084	34.2	57.5	7.7
		115.0	340.2	354.2	2.886	2.669	1.024	208.2	1169	8.55	0.119	42.6	62.7	7.7
		115.0	334.2	345.6	3.062	2.747	0.999	241.1	1158	11.67	0.161	49.8	68.5	7.7
		115.0	327.5	336.8	3.275	2.881	0.974	274.7	1147	14.74	0.201	54.7	72.9	7.7
		115.0	320.0	326.8	3.528	3.070	0.946	311.5	1133	17.99	0.243	58.1	76.8	7.7
0.25 HP		115.0	318.2	324.7	3.585	3.117	0.939	318.7	1130	18.58	0.250	58.5	77.3	7.7
19.5 OZ-FT		115.0	315.7	321.8	3.665	3.185	0.930	328.9	1127	19.50	0.262	59.3	78.0	7.7
		115.0	311.1	316.0	3.817	3.318	0.914	348.5	1119	21.06	0.281	60.0	79.4	7.7
		115.0	300.9	303.7	4.148	3.624	0.878	388.1	1103	24.07	0.316	60.8	81.4	7.7
		115.0	289.2	290.5	4.509	3.978	0.839	428.6	1084	27.05	0.349	60.8	82.6	7.7
1075 RPM		115.0	283.7	284.2	4.689	4.159	0.821	447.5	1075	28.23	0.361	60.2	83.0	7.7
		115.0	277.5	277.0	4.885	4.362	0.800	468.9	1064	29.44	0.373	59.3	83.5	7.7
		115.0	265.3	263.2	5.270	4.758	0.761	508.7	1044	31.57	0.392	57.5	83.9	7.7
		115.0	250.9	248.1	5.690	5.204	0.717	549.3	1018	33.42	0.405	55.0	83.9	7.7
		115.0	236.8	233.6	6.102	5.647	0.674	587.7	992	34.65	0.409	51.9	83.8	7.7
		115.0	222.4	219.1	6.507	6.089	0.633	624.4	963	35.57	0.408	48.7	83.4	7.7
BDT OZ-FT		115.0	209.7	206.9	6.861	6.475	0.598	654.2	935	35.88	0.400	45.6	82.9	7.7
		115.0	208.1	205.5	6.904	6.523	0.594	657.9	931	35.84	0.397	45.0	82.9	7.7
		115.0	194.1	192.5	7.288	6.948	0.557	689.8	897	35.67	0.381	41.2	82.3	7.7
		115.0	180.1	180.6	7.654	7.355	0.522	718.1	861	35.21	0.361	37.5	81.6	7.7
		115.0	166.9	170.1	8.004	7.743	0.492	744.4	821	34.24	0.335	33.6	80.9	7.7
		115.0	153.9	160.8	8.322	8.101	0.466	766.4	780	33.06	0.307	29.9	80.1	7.7
		115.0	142.1	152.8	8.612	8.428	0.445	786.3	738	31.50	0.277	26.2	79.4	7.7
		115.0	131.0	146.2	8.879	8.734	0.427	804.8	692	29.83	0.246	22.8	78.8	7.7
		115.0	120.0	140.9	9.130	9.018	0.412	819.9	643	27.99	0.214	19.5	78.1	7.8
		115.0	110.2	136.7	9.353	9.280	0.401	834.6	593	25.96	0.183	16.4	77.6	7.8
		115.0	99.8	133.5	9.558	9.513	0.391	843.2	539	23.94	0.154	13.6	76.7	7.8
		115.0	90.6	131.2	9.737	9.725	0.385	852.3	482	21.94	0.126	11.0	76.1	7.8
		115.0	82.0	129.9	9.892	9.906	0.381	859.1	424	19.86	0.100	8.7	75.5	7.8
		115.0	74.5	130.8	10.010	10.053	0.383	865.9	361	18.09	0.078	6.7	75.2	7.8
		115.0	68.2	133.4	10.109	10.178	0.390	871.5	297	16.79	0.059	5.1	75.0	7.8
		115.0	62.7	134.7	10.194	10.290	0.395	875.8	227	14.75	0.040	3.4	74.7	7.8
		115.0	57.1	137.2	10.267	10.383	0.405	880.7	147	11.94	0.021	1.8	74.6	7.8
												DRAWING NO.	PAGE 3 of 4	REV.
												22YH25A	-	

Dayton Electric Mfg. Co. Lake Forest, IL 60045 USA

Performance Data





22YH25A	REV. -
---------	-----------

CONNECTIONS

COM - WHITE

HIGH - BLACK

ROTATION IS CCW LEAD END  
NON-REVERSIBLE  
7.5 MFD, 440 VAC, CAP

DRAWING NO.	PAGE 1 of 1	REV.
	22YH25A	-

**Dayton**®**DIRECT DRIVE  
FAN MOTOR****HP:** 1/4**VOLTS:** 115**AMPS:** 4.0**RPM:** 1075**DUTY:** CONT**SF:** 1.0**KVA CODE:****ENCL:** TEAO**THERMALLY PROTECTED:** AUTOMFG. NO. ☐ ☐PROT. CODE: ☐7A010☐**MTR REF:** K55HXMDD-412Part  
No **22YH25A****PH:** 1**HZ:** 60**FR:** 48YZ**INS CL:** B**AMB:** 40 °C**SFA:**AVG. F.L.  
EFF.**Disconnect Power Before Making Any  
Electrical Connections or Changes****CONNECTIONS****COM - WHITE****HIGH - BLACK**

E37403



258501

**ROTATION IS CCW LEAD END  
NON-REVERSIBLE  
7.5 MFD, 440 VAC, CAP****Mfd for Dayton Electric Mfg. Co., Lake Forest, IL 60045 USA****Made in Mexico**