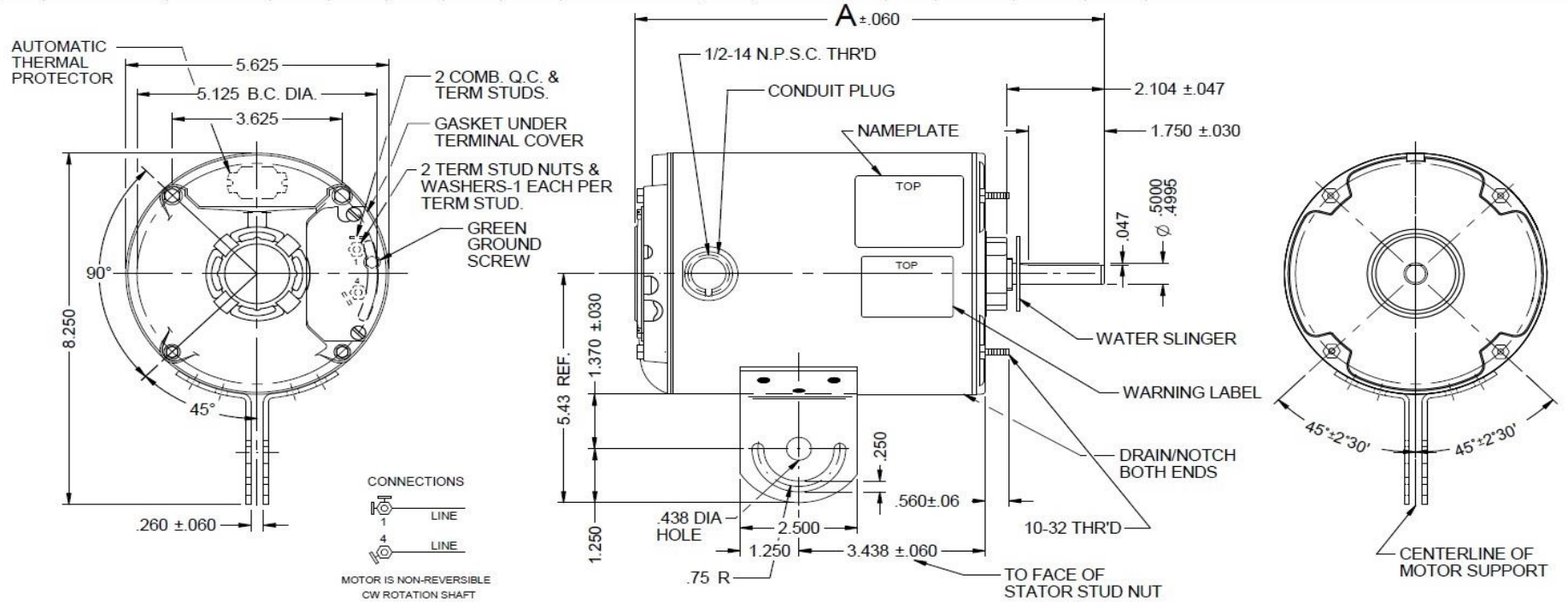


Dimensional Drawing

22YH22A

REV.
-

VAR	MODEL	CUST. PT. NO.	A	B	C	D	HP	VOLTS	SF	AMPS	HZ	RPM	CONN VOLTS	PROT.	DESCRIPTION / REMARKS
002	S55KZRLJ-8117	22YH22A	10.14	-----	-----	-----	1/3	115	1.0	4.8	60	1725	---	AUTO	48YZ TEAO



DRAWING NO. PAGE 1 of 1 REV.
 22YH22A -

22YH22A

REV.

-

SPLIT-PHASE & CAPACITOR START MOTOR PERFORMANCE

HP:	1/3HP				
Poles:	4P				
Ambient (°C)	40				
Altitude (FASL):					
No. of Speeds:	1				
Volts:	115	115			
HZ:	60	60			
Service Factor:	1				
Efficiency:	@ Rated Load				
Power Factor:	@ Rated Load				
Amps:	@ No Load				
	@ Rated Load	4.3			
	@ Service Factor				
	@ Locked Rotor	24.2			
RPM:	@ Rated Load	1725			
Torques: Oz.Ft. / Lb.In. <small>(Circle One)</small>	Breakdown	24.2			
	Locked Rotor	19.2			
	Pull-Up	17.3			
	Rated Load	16.2			
	Service Factor				
Watts:	@ Rated Load				
KVA Code:					
Temperature Rise:	@ Rated Load				
	@ Service Factor				
Thermal Protector:	Trip Temp (°C)				
Winding Material:	Start (Auxiliary)			AI	
	Run (Main)			AI	
Capacitor(s):	Start (MFD / Volts)				
	No. of Start Capacitors				
	Run (MFD / Volts)			N/A	
	No. of Run Capacitors			N/A	

LOW SPEED PERFORMANCE DATA:

HP:					
Poles:					
Volts:					
HZ:					
Efficiency:	@ Rated Load				
Power Factor:	@ Rated Load				
Amps:	@ No Load				
	@ Rated Load				
	@ Service Factor				
	@ Locked Rotor				
Torques: Oz.Ft. / Lb.In. <small>(Circle One)</small>	Breakdown				
	Locked Rotor				
	Pull-Up				
	Rated Load				
	Service Factor				
Watts:	@ Rated Load				
Temperature Rise:	@ Rated Load				
	@ Service Factor				

DRAWING NO. PAGE 1 of 1	REV.
22YH22A	-

Performance Data



22YH22A

REV.
-

Dayton Manufacturing Company

Motor Description

Model: S055RLH811704 22YH22
 Motor ID: 1
 Poles: 4
 Volts: 115
 Frequency: 60
 HP: 1/3
 Speed: 1725
 Phase: 1
 Protector: AUTO

Test Conditions

Test Type: Start
 Test Number: 1
 Poles: 4
 Volts: 115
 Hz: 60
 Rotation: CCWLE
 Special Conn:
 TestBoard: Amtps Performance

Run Cap: 0
 Start Cap: 0
 Environment:
 Tested: 9/14/2010 2:57:00 PM
 Tested By: Sharp, Gerald
 Gear Ratio: 1:1
 Bearing Friction: -0.79 Oz-Ft
 Windage Torque: -2.20 Oz-Ft
 Fixture #4

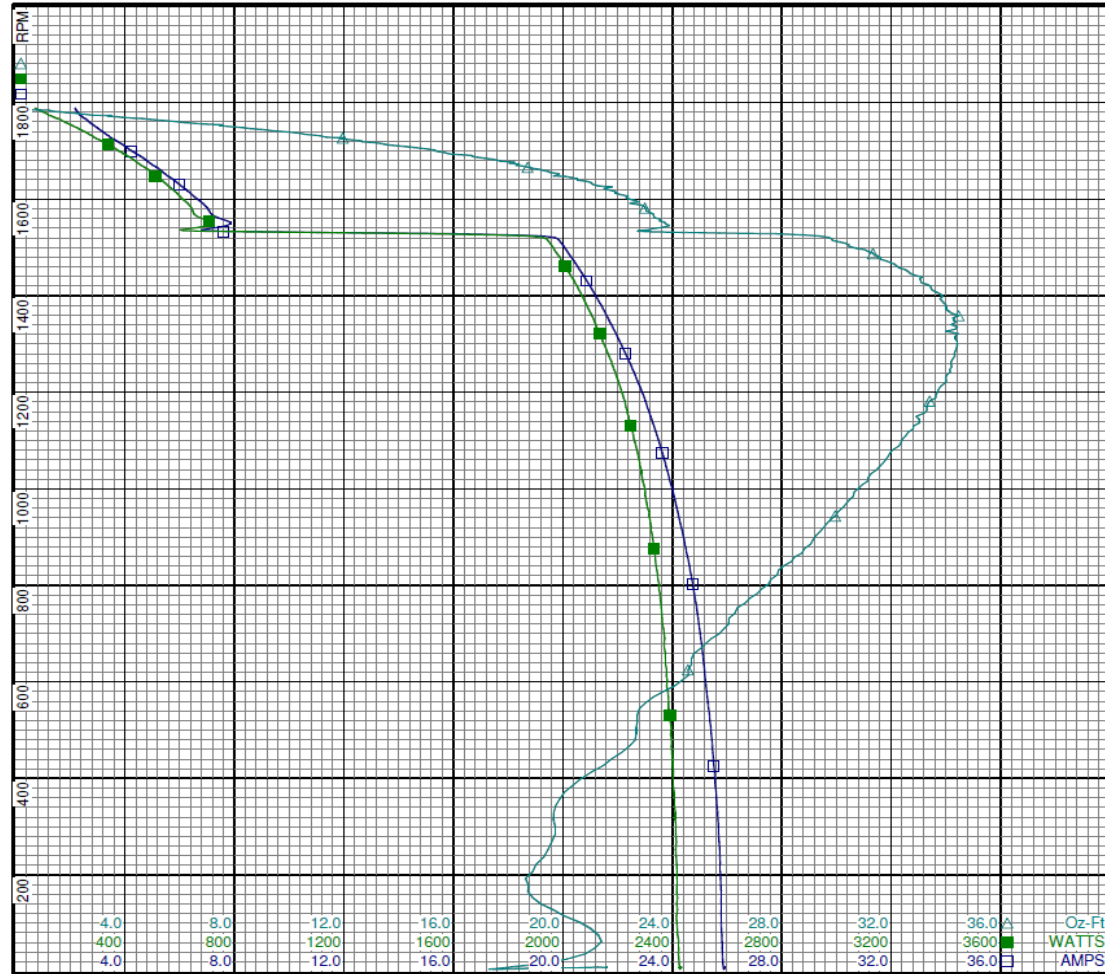
Special Points	Vline (V)	Iline (A)	Watts	RPM	Tq(Oz-ft)	HP	Eff (%)	PF (%)
	115.0	25.92	2434	8	21.59	0.002	0.1	81.7
PUT OZ-FT	115.0	25.88	2427	4	17.30	0.001	0.0	81.5
	115.0	25.84	2424	25	20.13	0.006	0.2	81.6
	115.0	25.78	2416	165	18.71	0.037	1.1	81.5
	115.0	25.65	2411	329	19.67	0.077	2.4	81.7
	115.0	25.44	2398	479	22.63	0.129	4.0	81.9
	115.0	25.19	2377	613	24.58	0.180	5.6	82.1
	115.0	24.94	2362	731	26.07	0.227	7.2	82.4
	115.0	24.62	2340	840	28.08	0.281	9.0	82.7
	115.0	24.26	2318	936	29.78	0.332	10.7	83.1
	115.0	23.88	2289	1023	31.16	0.379	12.4	83.3
	115.0	23.48	2259	1103	32.41	0.426	14.1	83.7
	115.0	23.05	2228	1176	33.33	0.467	15.6	84.0
	115.0	22.59	2191	1241	34.15	0.505	17.2	84.3
	115.0	22.11	2150	1300	34.40	0.532	18.5	84.5
	115.0	21.65	2110	1354	34.26	0.552	19.5	84.8
	115.0	21.17	2067	1403	33.80	0.564	20.4	84.9
	115.0	20.70	2024	1446	32.69	0.563	20.7	85.0
	115.0	20.24	1982	1484	31.38	0.554	20.9	85.1
	115.0	19.69	1924	1520	29.70	0.538	20.8	85.0
	115.0	7.40	671	1541	23.66	0.434	48.3	78.8
	115.0	7.04	645	1578	23.05	0.433	50.1	79.6
	115.0	6.39	590	1612	21.93	0.421	53.2	80.2
	115.0	5.78	533	1639	20.53	0.401	56.0	80.2
	115.0	5.20	477	1664	18.85	0.373	58.5	79.7
	115.0	4.62	418	1686	16.87	0.339	60.5	78.5
	115.0	4.06	358	1707	14.56	0.296	61.7	76.6
	115.0	3.54	297	1724	11.86	0.244	61.2	72.9
	115.0	3.06	235	1744	8.98	0.186	59.1	66.8
	115.0	2.63	169	1762	5.39	0.113	50.0	55.9
	115.0	2.28	106	1779	1.86	0.039	27.6	40.5
	115.0	2.17	70	1788	0.00	0.000	0.0	28.3

DRAWING NO. PAGE 1 of 4 REV.
 22YH22A -

Performance Data



22YH22A REV. -



Curve Descriptions:
 Motor(1) Test 1 Start 115V 60 Hz 4P
 CCWLE
 □ SPEED vs ILine
 ■ SPEED vs WATTS
 △ SPEED vs TORQUE

Motor Ratings:
 S055RLJ811704 ID: 1 of 1
 22YH22

DRAWING NO. PAGE 2 of 4 REV.
 22YH22A -

Dayton Electric Mfg. Co. Lake Forest, IL 60045 USA

Performance Data

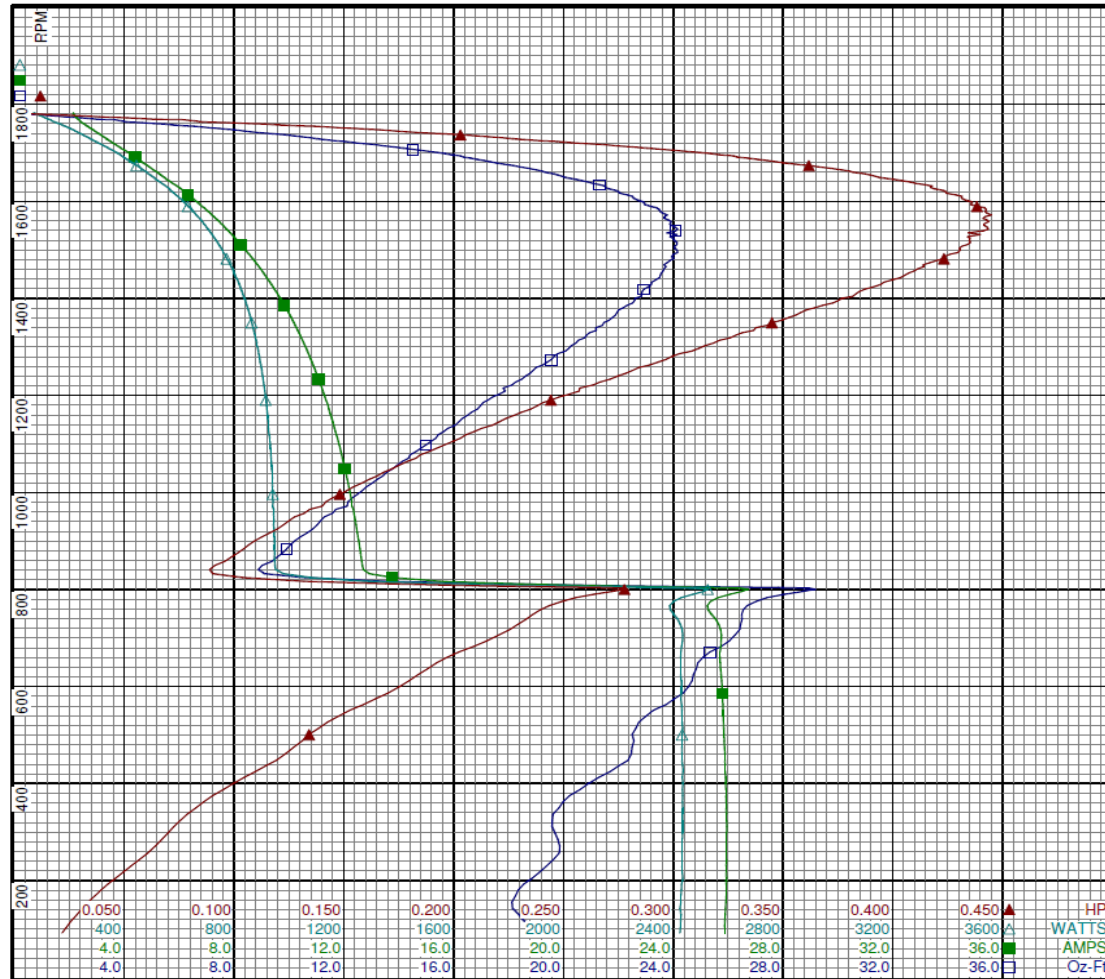


22YH22A		REV. -																																																																																																																																																																																																																																																																																																																																														
Dayton Manufacturing Company																																																																																																																																																																																																																																																																																																																																																
Motor Description		Test Conditions																																																																																																																																																																																																																																																																																																																																														
Model:	S055RLJ811704 22YH22	Test Type:	Run																																																																																																																																																																																																																																																																																																																																													
Motor ID:	1 of 1	Test Number:	2																																																																																																																																																																																																																																																																																																																																													
Poles:	4	Poles:	4																																																																																																																																																																																																																																																																																																																																													
Volts:	115	Volts:	115																																																																																																																																																																																																																																																																																																																																													
Frequency:	60	Hz:	60																																																																																																																																																																																																																																																																																																																																													
HP:	1/3	Rotation:	CCWLE																																																																																																																																																																																																																																																																																																																																													
Speed:	1725	Special Conn:																																																																																																																																																																																																																																																																																																																																														
Phase:	1	Speed Conn:																																																																																																																																																																																																																																																																																																																																														
Protector:	AUTO	TestBoard:	Amps Performance Fixture #4																																																																																																																																																																																																																																																																																																																																													
Run Cap:	0	Start Cap:	0																																																																																																																																																																																																																																																																																																																																													
Environment:		Tested:	9/14/2010 2:56:00 PM																																																																																																																																																																																																																																																																																																																																													
Tested By:	Sharp, Gerald	Gear Ratio:	1:1																																																																																																																																																																																																																																																																																																																																													
Bearing Friction:	-0.65 Oz-Ft	Windage Torque:	-2.29 Oz-Ft																																																																																																																																																																																																																																																																																																																																													
<table border="1"> <thead> <tr> <th>Special Points</th> <th>Vline (V)</th> <th>Iline (A)</th> <th>Watts</th> <th>RPM</th> <th>Tq (Oz-ft)</th> <th>HP</th> <th>Eff (%)</th> <th>PF (%)</th> </tr> </thead> <tbody> <tr><td></td><td>115.0</td><td>2.13</td><td>68</td><td>1782</td><td>0.00</td><td>0.000</td><td>0.0</td><td>28.0</td></tr> <tr><td></td><td>115.0</td><td>2.31</td><td>123</td><td>1769</td><td>3.04</td><td>0.064</td><td>38.7</td><td>46.5</td></tr> <tr><td></td><td>115.0</td><td>2.66</td><td>185</td><td>1754</td><td>6.54</td><td>0.137</td><td>55.1</td><td>60.4</td></tr> <tr><td></td><td>115.0</td><td>3.07</td><td>241</td><td>1739</td><td>9.42</td><td>0.195</td><td>60.4</td><td>68.2</td></tr> <tr><td>1725 RPM</td><td>115.0</td><td>3.44</td><td>287</td><td>1725</td><td>11.59</td><td>0.238</td><td>61.8</td><td>72.7</td></tr> <tr><td></td><td>115.0</td><td>3.56</td><td>303</td><td>1721</td><td>12.39</td><td>0.254</td><td>62.5</td><td>73.9</td></tr> <tr><td></td><td>115.0</td><td>4.14</td><td>371</td><td>1700</td><td>15.41</td><td>0.312</td><td>62.7</td><td>77.8</td></tr> <tr><td>16.2 OZ-FT</td><td>115.0</td><td>4.33</td><td>390</td><td>1694</td><td>16.20</td><td>0.327</td><td>62.5</td><td>78.3</td></tr> <tr><td>0.333 HP</td><td>115.0</td><td>4.44</td><td>401</td><td>1689</td><td>16.56</td><td>0.333</td><td>61.9</td><td>78.6</td></tr> <tr><td></td><td>115.0</td><td>4.69</td><td>429</td><td>1679</td><td>17.57</td><td>0.351</td><td>61.0</td><td>79.5</td></tr> <tr><td></td><td>115.0</td><td>5.33</td><td>495</td><td>1654</td><td>19.80</td><td>0.390</td><td>58.8</td><td>80.7</td></tr> <tr><td></td><td>115.0</td><td>5.99</td><td>557</td><td>1628</td><td>21.52</td><td>0.417</td><td>55.8</td><td>80.9</td></tr> <tr><td></td><td>115.0</td><td>6.62</td><td>614</td><td>1599</td><td>22.86</td><td>0.435</td><td>52.9</td><td>80.6</td></tr> <tr><td></td><td>115.0</td><td>7.25</td><td>668</td><td>1568</td><td>23.68</td><td>0.442</td><td>49.4</td><td>80.0</td></tr> <tr><td></td><td>115.0</td><td>7.86</td><td>715</td><td>1535</td><td>23.77</td><td>0.434</td><td>45.3</td><td>79.1</td></tr> <tr><td></td><td>115.0</td><td>8.43</td><td>757</td><td>1499</td><td>24.14</td><td>0.431</td><td>42.4</td><td>78.1</td></tr> <tr><td>BDT OZ-FT</td><td>115.0</td><td>8.48</td><td>760</td><td>1494</td><td>24.15</td><td>0.430</td><td>42.2</td><td>77.9</td></tr> <tr><td></td><td>115.0</td><td>8.96</td><td>794</td><td>1461</td><td>23.66</td><td>0.411</td><td>38.7</td><td>77.0</td></tr> <tr><td></td><td>115.0</td><td>9.47</td><td>825</td><td>1418</td><td>22.93</td><td>0.387</td><td>35.0</td><td>75.7</td></tr> <tr><td></td><td>115.0</td><td>9.93</td><td>852</td><td>1376</td><td>22.01</td><td>0.360</td><td>31.6</td><td>74.6</td></tr> <tr><td></td><td>115.0</td><td>10.36</td><td>873</td><td>1329</td><td>20.94</td><td>0.331</td><td>28.3</td><td>73.3</td></tr> <tr><td></td><td>115.0</td><td>10.75</td><td>892</td><td>1280</td><td>19.64</td><td>0.299</td><td>25.0</td><td>72.1</td></tr> <tr><td></td><td>115.0</td><td>11.11</td><td>907</td><td>1227</td><td>18.24</td><td>0.267</td><td>21.9</td><td>70.9</td></tr> <tr><td></td><td>115.0</td><td>11.45</td><td>919</td><td>1171</td><td>16.86</td><td>0.235</td><td>19.1</td><td>69.8</td></tr> <tr><td></td><td>115.0</td><td>11.76</td><td>930</td><td>1111</td><td>15.35</td><td>0.203</td><td>16.3</td><td>68.8</td></tr> <tr><td></td><td>115.0</td><td>12.04</td><td>937</td><td>1049</td><td>13.78</td><td>0.172</td><td>13.7</td><td>67.7</td></tr> <tr><td></td><td>115.0</td><td>12.28</td><td>942</td><td>981</td><td>12.14</td><td>0.142</td><td>11.2</td><td>66.7</td></tr> <tr><td></td><td>115.0</td><td>12.51</td><td>946</td><td>908</td><td>10.41</td><td>0.113</td><td>8.9</td><td>65.7</td></tr> <tr><td></td><td>115.0</td><td>12.93</td><td>979</td><td>832</td><td>9.10</td><td>0.090</td><td>6.9</td><td>65.8</td></tr> <tr><td></td><td>115.0</td><td>26.50</td><td>2511</td><td>796</td><td>28.73</td><td>0.272</td><td>8.1</td><td>82.4</td></tr> <tr><td></td><td>115.0</td><td>25.73</td><td>2432</td><td>717</td><td>26.42</td><td>0.226</td><td>6.9</td><td>82.2</td></tr> <tr><td></td><td>115.0</td><td>25.76</td><td>2429</td><td>611</td><td>24.68</td><td>0.180</td><td>5.5</td><td>82.0</td></tr> <tr><td></td><td>115.0</td><td>25.84</td><td>2433</td><td>501</td><td>22.50</td><td>0.134</td><td>4.1</td><td>81.8</td></tr> <tr><td></td><td>115.0</td><td>25.92</td><td>2433</td><td>388</td><td>20.60</td><td>0.095</td><td>2.9</td><td>81.6</td></tr> <tr><td></td><td>115.0</td><td>25.94</td><td>2433</td><td>270</td><td>19.86</td><td>0.064</td><td>2.0</td><td>81.6</td></tr> <tr><td></td><td>115.0</td><td>25.91</td><td>2428</td><td>156</td><td>18.12</td><td>0.034</td><td>1.0</td><td>81.5</td></tr> </tbody> </table>				Special Points	Vline (V)	Iline (A)	Watts	RPM	Tq (Oz-ft)	HP	Eff (%)	PF (%)		115.0	2.13	68	1782	0.00	0.000	0.0	28.0		115.0	2.31	123	1769	3.04	0.064	38.7	46.5		115.0	2.66	185	1754	6.54	0.137	55.1	60.4		115.0	3.07	241	1739	9.42	0.195	60.4	68.2	1725 RPM	115.0	3.44	287	1725	11.59	0.238	61.8	72.7		115.0	3.56	303	1721	12.39	0.254	62.5	73.9		115.0	4.14	371	1700	15.41	0.312	62.7	77.8	16.2 OZ-FT	115.0	4.33	390	1694	16.20	0.327	62.5	78.3	0.333 HP	115.0	4.44	401	1689	16.56	0.333	61.9	78.6		115.0	4.69	429	1679	17.57	0.351	61.0	79.5		115.0	5.33	495	1654	19.80	0.390	58.8	80.7		115.0	5.99	557	1628	21.52	0.417	55.8	80.9		115.0	6.62	614	1599	22.86	0.435	52.9	80.6		115.0	7.25	668	1568	23.68	0.442	49.4	80.0		115.0	7.86	715	1535	23.77	0.434	45.3	79.1		115.0	8.43	757	1499	24.14	0.431	42.4	78.1	BDT OZ-FT	115.0	8.48	760	1494	24.15	0.430	42.2	77.9		115.0	8.96	794	1461	23.66	0.411	38.7	77.0		115.0	9.47	825	1418	22.93	0.387	35.0	75.7		115.0	9.93	852	1376	22.01	0.360	31.6	74.6		115.0	10.36	873	1329	20.94	0.331	28.3	73.3		115.0	10.75	892	1280	19.64	0.299	25.0	72.1		115.0	11.11	907	1227	18.24	0.267	21.9	70.9		115.0	11.45	919	1171	16.86	0.235	19.1	69.8		115.0	11.76	930	1111	15.35	0.203	16.3	68.8		115.0	12.04	937	1049	13.78	0.172	13.7	67.7		115.0	12.28	942	981	12.14	0.142	11.2	66.7		115.0	12.51	946	908	10.41	0.113	8.9	65.7		115.0	12.93	979	832	9.10	0.090	6.9	65.8		115.0	26.50	2511	796	28.73	0.272	8.1	82.4		115.0	25.73	2432	717	26.42	0.226	6.9	82.2		115.0	25.76	2429	611	24.68	0.180	5.5	82.0		115.0	25.84	2433	501	22.50	0.134	4.1	81.8		115.0	25.92	2433	388	20.60	0.095	2.9	81.6		115.0	25.94	2433	270	19.86	0.064	2.0	81.6		115.0	25.91	2428	156	18.12	0.034	1.0	81.5
Special Points	Vline (V)	Iline (A)	Watts	RPM	Tq (Oz-ft)	HP	Eff (%)	PF (%)																																																																																																																																																																																																																																																																																																																																								
	115.0	2.13	68	1782	0.00	0.000	0.0	28.0																																																																																																																																																																																																																																																																																																																																								
	115.0	2.31	123	1769	3.04	0.064	38.7	46.5																																																																																																																																																																																																																																																																																																																																								
	115.0	2.66	185	1754	6.54	0.137	55.1	60.4																																																																																																																																																																																																																																																																																																																																								
	115.0	3.07	241	1739	9.42	0.195	60.4	68.2																																																																																																																																																																																																																																																																																																																																								
1725 RPM	115.0	3.44	287	1725	11.59	0.238	61.8	72.7																																																																																																																																																																																																																																																																																																																																								
	115.0	3.56	303	1721	12.39	0.254	62.5	73.9																																																																																																																																																																																																																																																																																																																																								
	115.0	4.14	371	1700	15.41	0.312	62.7	77.8																																																																																																																																																																																																																																																																																																																																								
16.2 OZ-FT	115.0	4.33	390	1694	16.20	0.327	62.5	78.3																																																																																																																																																																																																																																																																																																																																								
0.333 HP	115.0	4.44	401	1689	16.56	0.333	61.9	78.6																																																																																																																																																																																																																																																																																																																																								
	115.0	4.69	429	1679	17.57	0.351	61.0	79.5																																																																																																																																																																																																																																																																																																																																								
	115.0	5.33	495	1654	19.80	0.390	58.8	80.7																																																																																																																																																																																																																																																																																																																																								
	115.0	5.99	557	1628	21.52	0.417	55.8	80.9																																																																																																																																																																																																																																																																																																																																								
	115.0	6.62	614	1599	22.86	0.435	52.9	80.6																																																																																																																																																																																																																																																																																																																																								
	115.0	7.25	668	1568	23.68	0.442	49.4	80.0																																																																																																																																																																																																																																																																																																																																								
	115.0	7.86	715	1535	23.77	0.434	45.3	79.1																																																																																																																																																																																																																																																																																																																																								
	115.0	8.43	757	1499	24.14	0.431	42.4	78.1																																																																																																																																																																																																																																																																																																																																								
BDT OZ-FT	115.0	8.48	760	1494	24.15	0.430	42.2	77.9																																																																																																																																																																																																																																																																																																																																								
	115.0	8.96	794	1461	23.66	0.411	38.7	77.0																																																																																																																																																																																																																																																																																																																																								
	115.0	9.47	825	1418	22.93	0.387	35.0	75.7																																																																																																																																																																																																																																																																																																																																								
	115.0	9.93	852	1376	22.01	0.360	31.6	74.6																																																																																																																																																																																																																																																																																																																																								
	115.0	10.36	873	1329	20.94	0.331	28.3	73.3																																																																																																																																																																																																																																																																																																																																								
	115.0	10.75	892	1280	19.64	0.299	25.0	72.1																																																																																																																																																																																																																																																																																																																																								
	115.0	11.11	907	1227	18.24	0.267	21.9	70.9																																																																																																																																																																																																																																																																																																																																								
	115.0	11.45	919	1171	16.86	0.235	19.1	69.8																																																																																																																																																																																																																																																																																																																																								
	115.0	11.76	930	1111	15.35	0.203	16.3	68.8																																																																																																																																																																																																																																																																																																																																								
	115.0	12.04	937	1049	13.78	0.172	13.7	67.7																																																																																																																																																																																																																																																																																																																																								
	115.0	12.28	942	981	12.14	0.142	11.2	66.7																																																																																																																																																																																																																																																																																																																																								
	115.0	12.51	946	908	10.41	0.113	8.9	65.7																																																																																																																																																																																																																																																																																																																																								
	115.0	12.93	979	832	9.10	0.090	6.9	65.8																																																																																																																																																																																																																																																																																																																																								
	115.0	26.50	2511	796	28.73	0.272	8.1	82.4																																																																																																																																																																																																																																																																																																																																								
	115.0	25.73	2432	717	26.42	0.226	6.9	82.2																																																																																																																																																																																																																																																																																																																																								
	115.0	25.76	2429	611	24.68	0.180	5.5	82.0																																																																																																																																																																																																																																																																																																																																								
	115.0	25.84	2433	501	22.50	0.134	4.1	81.8																																																																																																																																																																																																																																																																																																																																								
	115.0	25.92	2433	388	20.60	0.095	2.9	81.6																																																																																																																																																																																																																																																																																																																																								
	115.0	25.94	2433	270	19.86	0.064	2.0	81.6																																																																																																																																																																																																																																																																																																																																								
	115.0	25.91	2428	156	18.12	0.034	1.0	81.5																																																																																																																																																																																																																																																																																																																																								
DRAWING NO.		PAGE 3 of 4																																																																																																																																																																																																																																																																																																																																														
22YH22A		REV.																																																																																																																																																																																																																																																																																																																																														
		-																																																																																																																																																																																																																																																																																																																																														

Performance Data



22YH22A REV. -



Curve Descriptions:

Motor(1) Test 2 Run 115V 60 Hz 4P
CCWLE

- SPEED vs TORQUE
- SPEED vs ILine
- △ SPEED vs WATTS
- ▲ SPEED vs HP

Motor Ratings:

S055RLJ811704 ID: 1 of 1
22YH22

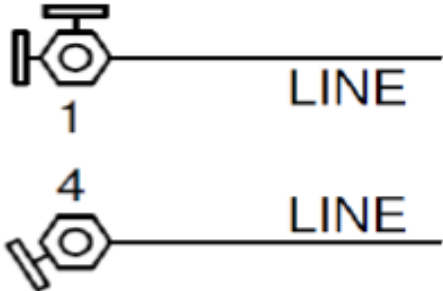
DRAWING NO. PAGE 4 of 4 REV.
22YH22A -

Dayton Electric Mfg. Co. Lake Forest, IL 60045 USA

22YH22A	REV. -
---------	-----------

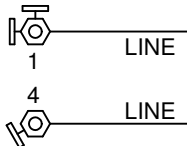
Disconnect Power Before Making Any
Electrical Connections or Changes

CONNECTIONS



MOTOR IS NON-REVERSIBLE
CW ROTATION SHAFT

DRAWING NO.	PAGE 1 of 1	REV.
22YH22A		-

Dayton®**DIRECT DRIVE
FAN MOTOR****HP:** 1/3**VOLTS:** 115**AMPS:** 4.8**RPM:** 1725**DUTY:** CONT**SF:** 1.0**KVA CODE:** M**ENCL:** TEAO**THERMALLY PROTECTED:** AUTOMFG. NO. PROT. CODE: 04290**MTR REF:** S55KZRLJ-8117**[BAR CODE]**Part
No **22YH22A****PH:** 1**HZ:** 60**FR:** 48YZ**INS CL:** B**AMB:** 40 °C**SFA:** 4.8**Disconnect Power Before Making Any
Electrical Connections or Changes****CONNECTIONS****MOTOR IS NON-REVERSIBLE
CW ROTATION SHAFT**

Mfd for Dayton Electric Mfg. Co., Lake Forest, IL 60045 USA

