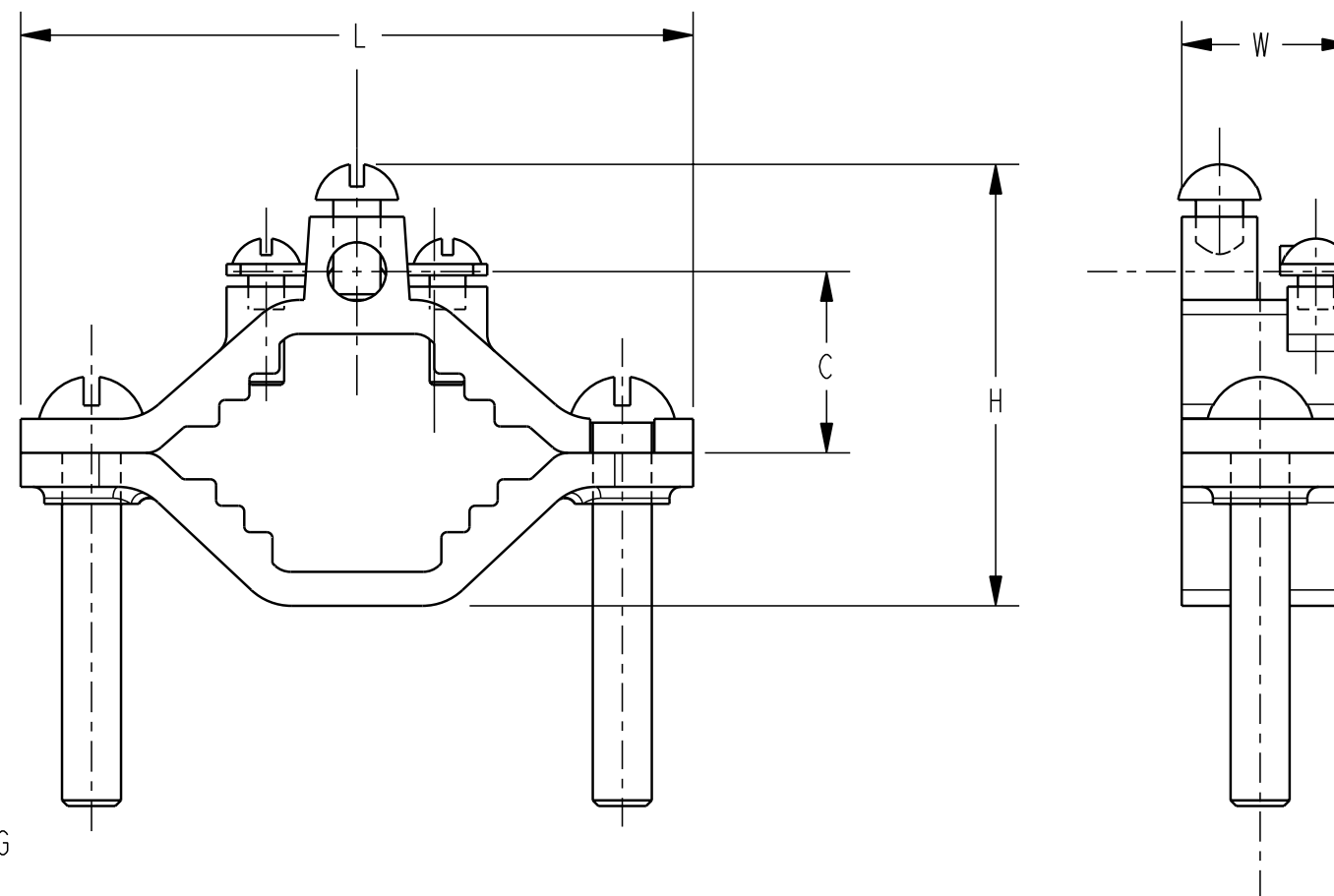


CATALOG NO.	ACCOMMODATES CONDUCTOR RANGE			REFERENCE DIMENSIONS				RECOMMENDED SCREW TORQUE " INCH POUNDS "	
	WATER PIPE	GROUND	GROUND CLAMP	H	L	W	C	PIPE CLAMP	WIRE CLAMP
C-6	1/2-1	10-2	BARE ARMORED UNARMORED WIRE	1.60	2.34	1.06	.63	50 LB-IN	50 LB-IN
C-6D	[13-25]	STR		[41]	[59]	[27]	[16]		
C-7	1 1/4-2	10-2	CABLES OR CORDS	2.38	3.62	.94	1.00		
	[32-51]	STR		[60]	[92]	[24]	[25]		

REV.	DATE	DESCRIPTION	ECO	BY	C'H'K.
A	12/10/2008 11:31:00 AM	ADD NOTE 6 TO DRAWING PER M/U.	17166	RLB	JP



NOTES:

- MATERIAL:
BODY: SOLID CAST BRONZE.
HARDWARE: STEEL, ZINC PLATED. (ACCEPT AS NOTED)
- CONNECTORS ARE UL LISTED TO STANDARD UL467, GROUNDING AND BONDING EQUIPMENT. FOR INDICATED CONDUCTOR RANGE.
- CONNECTORS ARE CSA CERTIFIED TO STANDARD C22.2, NO. 41, GROUNDING AND BONDING EQUIPMENT FOR INDICATED CONDUCTOR RANGE.
- CATALOG NUMBERS WITH SUFFIX "D" INDICATED THAT CONNECTORS ARE UL467 LISTED FOR DIRECT BURIAL IN EARTH AND CONCRETE, AND ARE SUPPLIED WITH SILICON BRONZE HARDWARE. (EXAMPLE: C-6D)
- DIMENSIONS IN BRACKETS [] ARE IN MILLIMETERS ROUNDED TO THE NEAREST WHOLE NUMBER. UNLESS OTHERWISE NOTED, AND ARE FOR REFERENCE ONLY.
- TO ACCOMMODATE THE SMALLER WATER PIPE SIZES, SOME CONNECTORS REQUIRE THE INSTALLER TO REVERSE THE BOTTOM SADDLE PORTION OF THE PIPE CLAMPING ELEMENT.

TO ORDER BURNDY® PRODUCTS CALL		GROUND CLAMPS, ARMORED WIRE - WATER PIPE	
UNITED STATES:		ITEM NO: 10002994	
1-800-346-4175 (LONDONDERRY, NH)		CAT. NO: SEE TABLE	
CANADA:		DRAWN BY: D. DOBRINSKI 01/08/97	
1-800-361-6975 (QUEBEC)		CHECKER: D.D. 04/17/97	
1-800-387-6487 (ALL OTHER PROVINCES)		DSN APPVL: K. MELLO 04/18/97	
FOR PRODUCT INFO: http://www.fciconnect.com		MFG APPVL: -- --	
		QA APPVL: D. VARIO 04/23/97	
		MKT APPVL: P. WERTHMAN 04/23/97	
		SCALE: 1:1	
		DRAWING NO	
		REV	
		PROJECT #: --	
		SIZE	
		DOCUMENT TYPE: --	
		REL LEVEL: Released	
		SC210662-01	
		SHEET 1 OF 1	
		A	

REV: PE0200