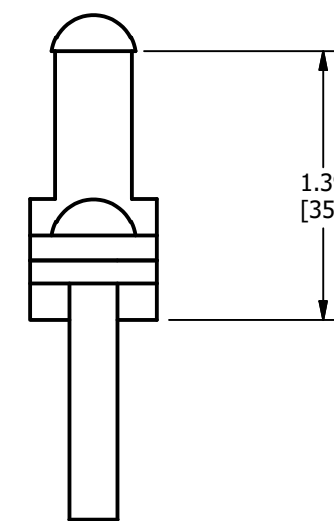
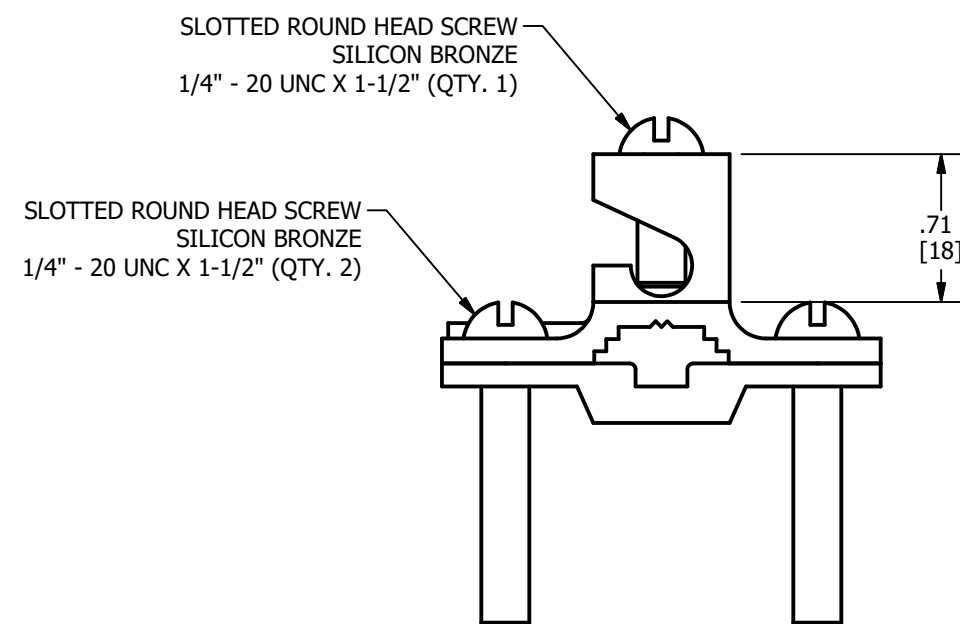
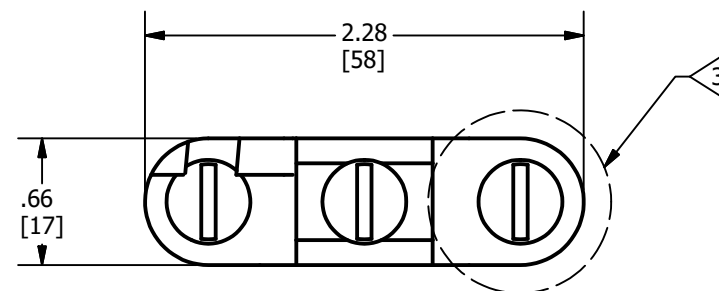


MAIN			TAP	RECOMMENDED TORQUE	
WATER PIPE	REBAR	GROUND ROD	GROUND	PIPE CLAMP	WIRE CLAMP
1/2" - 1"	#4 - #6	3/8" - 1"	10 SOL. - 2 STR	50 IN/LBS	50 IN/LBS

REV	DATE	DESCRIPTION	ECO	BY	C'H'K.
D	7/9/2020	ADDED NOTE	53743	JL	TR



NOTES:

1. MATERIAL: COPPER
2. ACCOMMODATES: (SEE TABLE)
3. CONNECTOR IS APPROVED AND SUITABLE FOR DIRECT BURIAL DISPLAY BY WHITE TAG PROVIDED WITH CONNECTOR
4. DIMENSIONS IN BRACKETS [] ARE IN MILLIMETERS ROUNDED OFF TO THE NEAREST MILLIMETER, UNLESS OTHERWISE SPECIFIED AND ARE FOR REFERENCE ONLY.
5. TO ACCOMMODATE THE SMALLER WATER PIPE SIZES, SOME CONNECTORS REQUIRE THE INSTALLER TO REVERS THE BOTTOM SADDLE PORTION OF THE PIPE CLAMPING ELEMENT.
6. SUFFIX BOX100 INDICATES PART TO BE BOXED IN A CARTON OF 100 PIECES.

TO ORDER BURNDY® PRODUCTS CALL
 UNITED STATES
 1-800-346-4175 (LONDONDERRY, NH)
 CANADA:
 1-800-361-6975 (QUEBEC)
 1-800-387-6487 (ALL OTHER PROVINCES)
 FOR PRODUCT INFO: <http://www.burndy.com>

GROUND PIPE CLAMP ASS'Y			
ITEM NO: 10037313			
CAT. NO: C11K16D			
DRAWN BY: P.LAPONIUS	3/24/2004		
CHECKER: P.LAPONIUS	3/24/2004		
DSN APRVL: --			
MFG APRVL: --			
QA APRVL: C.ACKERMAN	3/24/2004		
MKT APRVL: R.ROBICHEAU	3/24/2004		
PROD FAM: --		DRAWING NO	REV
PROJECT #: FPN2006029	SIZE	10037615	D
DOCUMENT TYPE: SALES			
REL LEVEL: Released	B	SHEET 1 OF 1	