

Please read and save these instructions. Read carefully before attempting to assemble, install, operate or maintain the product described. Protect yourself and other by observing all safety information. Failure to comply with instructions could result serious or fatal injury and/or property damage! Retain instructions for future reference.

Drum Carrier

DESCRIPTION

Allows 1 person to lift, transport, tilt, rotate, and drain steel drums. Two lock sets include lift locks that hold drums securely in raised position, and tilt locks that hold drums in horizontal or vertical position.

Use with 800-lb of 55-gal steel drums.

Shipped partially assembled.



21VG48

WARNING

1. Always use the Drum Carrier on firm and flat floor.
2. Do not overload.
3. Only after the binding chain firmly holds drum and location pin is correctly positioned can the Drum Carrier be moved.
4. Do not press the location lever down while moving the Drum Carrier.
5. When lifting the drum, do not step on the swivel caster support plat.

UNPACKING

When unpacking your unit, check carefully for shipping damage. If damage has occurred, file a claim with the carrier within 24 hours.

SPECIFICATION

Capacity	800LB
Drum Dimension	55GAL
Net Weight	110LB

ASSEMBLY

Some necessary tools must be prepared before assembly.

1. Take out all the parts from carton.

a	Base Frame(Part No. 6)
b	Supporting Tube (LH)(Part No.38)
c	Supporting Tube (RH)(Part No.42)
d	Supporting Hoop(Part No.22) and Connecting Plates(Part No.23)
e	Wheels (Part No.3.4.5) Swivel Caster with Brake (Part No.43)
f	Handle Frame(Part No.36)
g	Hardwares (bolts,nuts,washers,sleeves....)

2. Fix the wheels and Swivel caster.
3. Insert supporting tubes (LH& RH) (b,c) into the base frame rectangular tube (a), then fix them with bolts and nuts.
4. Assemble supporting hoop (d) and handle frame (f) to the supporting tubes. Be sure that both connecting plates are mounted in the same height position hole.

OPERATION

1. Clamping drum

- 1.1 Push the Drum Carrier near to the drum
- 1.2 Press down both location levers and raise the handle frame till the supporting hoop is in between the two middle ribs of the drum. Then release the location levers.

1.3 Clip the supporting hook onto the drum and close the mobile hoop.

1.4 Pull the binding chain tight and set it into the chain slot of the ratchet handle spanner. Be sure that the ratchet is in the first tooth of the spanner.

Operate the ratchet handle spanner clockwise slowly till the mobile hoop holds the drum tightly.

2. Lifting drum

Press down the location lever and lower the handle frame to lift the whole supporting hoop unit and the drum. While operating, ratchet and ratchet wheel will click to lock the handle frame.

3. Transportation

When the drum is lifted and locked, it can be transported.

4. Lower & release the drum

4.1 Press down the location levers, and the handle frame will automatically move upward. Release the location lever till the drum reaches the floor.

4.2 Separate the ratchet and ratchet handler spanner. Operate the ratchet handle spanner to loose the binding chain.

4.3 Open the mobile hoop, then push the drum carrier away from the drum.

NOTE: Rotate the drum

The Drum Carrier can rotate the drum from vertical to horizontal position as needed.

Turn the drum in 90° by hand, then pull out the half ring hook and rotate to lock the drum.

Turn the half ring hook so as to insert them into the corresponding holes to lock the drum in the horizontal position.

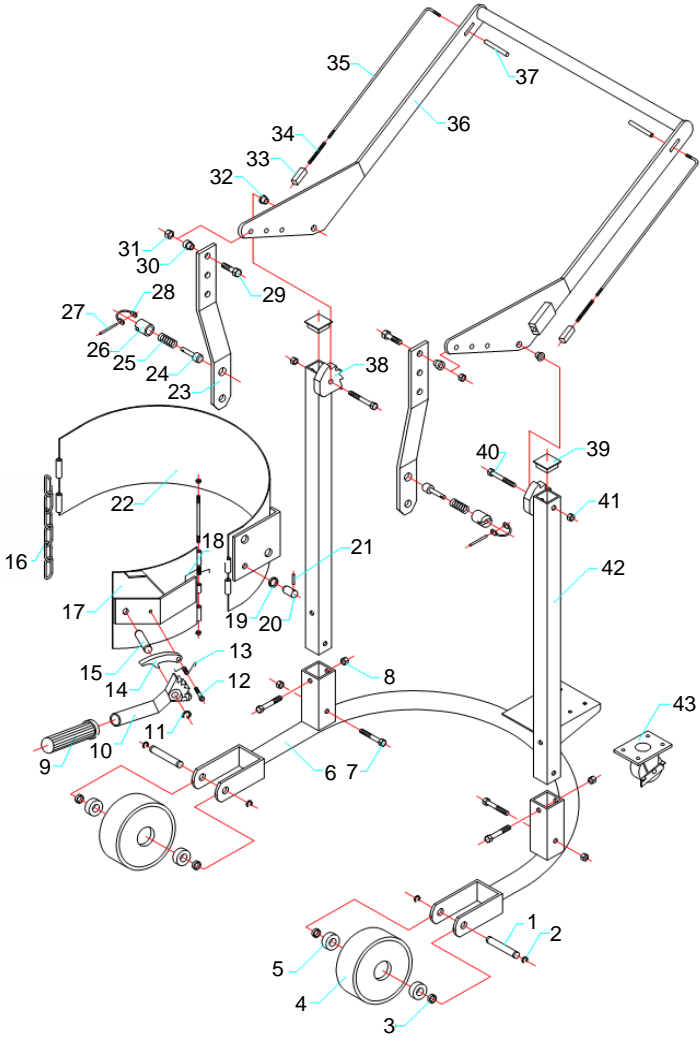


5. Adjustment

If the supporting hoop is too high to hold the middle of the drum while the handle frame is lifted to its maximum height, it is necessary to choose another appropriate hole on the handle frame.

If the drum cannot be lifted to required height while the handle frame is pressed to its minimum height, it is necessary to choose another appropriate handle frame.

EXPLODED DRAWING & PART LIST



No.	Description	Model	Qty	NO.	Description	Model	Qty
1	Wheel shaft	*	2	23	Connecting plates	*	2
2	Jump ring	*	4	24	Location pin	*	2
3	Bush	*	4	25	Spring	*	2
4	Front wheel	MH21VG4801G	2	26	Sliding bush	*	2
5	Bearing	*	4	27	Spring pin	*	2
6	Base Frame	*	1	28	Half ring hook	*	2
7	Bolt	*	4	29	Bolt	*	2
8	Lock nut	*	4	30	Bush	*	2
9	Rubber casing	*	1	31	Nut	*	2
10	Ratchet handle spanner	*	1	32	Bush	*	2
11	Jump ring	*	1	33	Sliding block	*	2
12	Bolt	*	1	34	Spring	*	2
13	Spring	*	1	35	Lever	*	2
14	Ratchet	*	1	36	Handle Frame	*	2
15	Ratchet shaft	*	1	37	Location Lever	*	2
16	Binding chain	MH21VG4802G	1	38	Supporting Tube (LH)	*	1
17	Mobile Hoop	*	1	39	Rubber square plug	*	2
18	Spring	*	1	40	Bolt	*	2
19	Washer	*	1	41	Lock nut	*	2
20	Supporting shaft	*	1	42	Supporting Tube (RH)	*	1
21	Spring pin	*	1	43	Swivel caster with brake	MH21VG4803G	1
22	Supporting hoop	*	1				

"*", not available as repair parts.

MAINTENANCE AND INSPECTION

1. Do routine check of the wearing condition of location pins and replace the worn pins in time.
2. Do routine check of chassis, front wheel and rear caster.
3. Do routine check of clamping reliability of chain.
4. Do routine check of all the connecting parts such as pins and fasteners.

WARRANTY

This product is warranted for 1 year from date of purchase to be free of manufacturing defects in material and workmanship.

The manufacturer's obligation hereunder is limited to repairing such products during' the warranty period, provided the product is sent prepaid back to the factory.

This warranty does not cover normal wear of parts or damage resulting from any of the following: negligent use or misuse of the product, use or application contrary to installation instructions, or disassembly, repair or alteration by any person prior to authorization from a factory representative.