

As the leading US manufacturer of wire and cable, General Cable has the broadest product offering and the greatest commitment to service and support. The **Carol® Brand**, stocked by Grainger, is the most recognizable name in the industry. General Cable is your single-source supplier for all your industrial, commercial and specialty cable needs.

General Cable has **more than 1,300 SKUs in the Grainger offering**, available in lengths from 25 feet to 1,000 feet in a variety of wire and cable categories, to accommodate specific customer application needs and win more business!



### Portable Cord Specification (SJOOW, SOOW, Welding Cable)

This easy-to-use checklist outlines the key questions you will need to ask to determine the right cable for a particular application:

1. What is the application? (Identifies where cable is being used)
  - Environmental Conditions
  - Temperature/Humidity (minimum/maximum ranges)
  - Moisture (will the cable be submerged or exposed to weather, rain, etc.?)
  - Dirt/Dust
  - Chemical Exposure (gases, oils, alkalis, acids, cleaning materials)
  - Critical Service/Reliability Needs
2. What is the voltage?
3. What is the amperage?
4. What is the gauge size?
5. How many conductors are required for the application?
6. What is the stranding? (Some applications require higher count stranding for better flexibility)
7. What is the overall length needed? (Important in calculating voltage drop)
8. Is any special color-coding of conductors needed?
9. Does this cable need agency approvals (UL, CSA, MSHA, RoHS, etc.)?

### Portable Power Cords: Why Choose Rubber?

#### Advantages:

- Flexibility
- Durability
- Tear Resistance
- Abrasion Resistance
- Melt Resistance
- Oil, Water and Chemical Resistance
- Impact Resistance

#### Applications:

- Temporary and Portable Power
- Construction Equipment
- Portable Tools and Equipment
- Portable Appliances
- Mining and Submersible Pumps
- Control Circuits
- Motors and Associated Machinery

#### Product Offering:

Cable Types: SOOW, SJOOW, SO and SJ  
 Voltage: 600V and 300V  
 Gauges: 2 AWG to 18 AWG  
 Conductors: 1 to 50  
 Jacket Color: Black (standard) and Yellow  
 Compliances: UL, CSA, MSHA

## WHERE ARE PORTABLE CORDS USED?



**Light & Heavy  
Manufacturing**



**Hospitals &  
Medical Offices**



**Stadiums & Arenas**



**Convention Centers**



**Construction  
Commercial & Residential**



**Rail Yards**



**Ship Yards**



**Emergency  
Preparedness & Reponse**

# Super Vu-Tron® Supreme Types SJOOW (300 Volts) & SOOW (600 Volts)

Temperature Range: -50°C to +105°C UL/CSA



GC Model No.	AWG Size	No. of Conductors	Length (Feet)	Grainger Item No.
<b>Type SJOOW - 300 Volts - UL/CSA Portable Cord</b>				
02601	18	2	250	2TKW4
02604	16	2	250	2TKW5
02605	16	3	250	2TKW3
02606	16	4	250	2TKW6
02608	14	3	250	2TKW7
02609	14	4	250	2TKW8
<b>Type SOOW - 600 Volts - UL/CSA Portable Cord</b>				
02635	16	3	250	2TKW9
02636	16	4	250	2TKX1
02638	14	3	250	2TKX2
02639	14	4	250	2TKX3
02642	12	3	250	2TKX4
02643	12	4	250	2TKX5
02645	10	3	250	2TKX6
02646	10	4	250	2TKX7

### Features:

- Excellent flexibility in cold temperatures
- Lasts longer in flex applications (extra-flexible Class M stranding)
- Integral Flexfill®
- Ozone-, sunlight (UV)- and weather-resistant
- UL Listed and CSA Certified for indoor and outdoor use
- Water-resistant (if properly sealed and terminated)
- Safety-colored, with high-visibility yellow jacket
- High heat and flame resistance
- Resistant to sunlight, oils, acids and chemicals
- Excellent abrasion and cut resistance
- TRU-Mark® sequential footage marking
- Tinned copper conductors – corrosion/oxidation-resistant

### Applications:

- Machine tools
- Power tools
- Dockside power applications
- Motor leads
- Portable machinery
- Cranes
- Submersible pumps
- Where water immersion is required
- Severe environment OEM/MRO applications

### Conductor Color Code Chart

No. of Conductors	Conductor Colors
2	Black, White
3	Black, White, Green/Yellow
4	Black, White, Red, Green/Yellow



# Carolprene® Jacketed Types SJOOW (300 Volts) & SOOW (600 Volts), Yellow Jacket

Temperature Range: -40°C to +90°C UL/CSA



GC Model No.	AWG Size	No. of Conductors	Length (Feet)	Grainger Item No.
<b>Type SJOOW - 300 Volts - UL/CSA Portable Cord</b>				
01444	18	4	250	6XWP7
01460	14	3	250	6XWR0
<b>Type SOOW - 600 Volts - UL/CSA Portable Cord</b>				
02469	18	3	250	6XWR6
02470	18	4	250	6XWR7
02466	16	4	250	6XWR9
02462	14	3	250	6XWT0
02425	12	3	250	6XWT2
02426	12	4	250	6XWT3
02428	10	3	250	6XWT4
02427	10	4	250	6XWT5

### Features:

- Excellent resistance to oil and moisture
- Good tensile strength, elongation and aging characteristics
- High flexibility
- Excellent abrasion resistance
- Water-resistant (if properly sealed and terminated)
- UL Listed and CSA Certified for indoor and outdoor use
- Ozone-, sunlight (UV)- and weather-resistant
- TRU-Mark® sequential footage marking

### Applications:

- Portable tools, equipment and appliances
- Small motors and associated machinery
- Food processing plants and equipment
- Shipyards/Marinas/Docks
- OEM/MRO
- OSHA VPP safety
- Construction site power
- Industrial plants
- Mining

### Conductor Color Code Chart

No. of Conductors	Conductor Colors
3	Black, White, Green
4	Black, White, Red, Green



# Carolprene® Jacketed Types SOOW (600 Volts), Black Jacket

Temperature Range: -40°C to +90°C UL/CSA



GC Model No.	AWG Size	No. of Conductors	25 Foot Item No.	50 Foot Item No.	100 Foot Item No.	250 Foot Item No.
<b>Type SOOW - 600 Volts - UL/CSA Portable Cord</b>						
02763	18	2	20PX82	20PY20	20PY57	—
02769	18	3	20PX83	20PY21	20PY58	3ZK64
02770	18	4	20PX84	20PY22	20PY59	5ZG77
02722	16	2	20PX89	20PY27	20PY64	—
02765	16	3	20PX90	20PY28	20PY65	2W375
02766	16	4	20PX91	20PY29	20PY66	3W479
02723	14	2	20PX96	20PY34	20PY71	—
02762	14	3	20PX97	20PY35	20PY72	2W376
02768	14	4	20PX98	20PY36	20PY73	2W377
02724	12	2	20PY01	20PY38	20PY75	—
02725	12	3	20PY02	20PY39	20PY76	2W378
02726	12	4	20PY03	20PY40	20PY77	3W476
02767	10	2	20PY06	20PY43	20PY80	—
02728	10	3	20PY07	20PY44	20PY81	3W477
02727	10	4	20PY08	20PY45	20PY82	3ZK63
16063	8	3	20PY11	20PY48	20PY85	5ZG84
16064	8	4	20PY12	20PY49	20PY86	5ZG85
16065	8	5	20PY13	20PY50	20PY87	—
16073	6	3	20PY14	20PY51	20PY88	—
16074	6	4	20PY15	20PY52	20PY89	—
16075	6	5	20PY16	20PY53	20PY90	—
16084	4	4	20PY17	20PY54	20PY91	—
16085	4	5	20PY18	20PY55	20PY92	—
16094	2	4	20PY19	20PY56	20PY93	—

### Features:

- Excellent resistance to oil and moisture
- Good tensile strength, elongation and aging characteristics
- High flexibility
- Excellent abrasion resistance
- Water-resistant (if properly sealed and terminated)
- UL Listed and CSA Certified for indoor and outdoor use
- Ozone-, sunlight (UV)- and weather-resistant
- TRU-Mark® sequential footage marking

### Applications:

- Portable tools and equipment
- Portable appliances
- Small motors and associated machinery



### Conductor Color Code Chart

No. of Conductors	Conductor Colors
2	Black, White
3	Black, White, Green
4	Black, White, Red, Green
5	Black, White, Red, Green, Orange

# Carolprene® Jacketed Types SJOOW (300 Volts), Black Jacket

Temperature Range: -40°C to +90°C UL/CSA



GC Model No.	AWG Size	No. of Conductors	25 Foot Item No.	50 Foot Item No.	100 Foot Item No.	250 Foot Item No.
<b>Type SJOOW - 300 Volts - UL/CSA Portable Cord</b>						
01310	18	2	20PX43	20PX56	20PX69	1W311
01311	18	3	20PX44	20PX57	20PX70	3ZK60
01344	18	4	20PX45	20PX58	20PX71	1UGT8
01312	16	2	20PX46	20PX59	20PX72	1W312
01342	16	3	20PX47	20PX60	20PX73	1W661
01343	16	4	20PX48	20PX61	20PX74	1UGT9
01358	14	2	20PX49	20PX62	20PX75	—
01360	14	3	20PX50	20PX63	20PX76	1W926
01364	14	4	20PX51	20PX64	20PX77	—
01380	12	3	20PX52	20PX65	1YPW6	5W578
01381	12	4	20PX53	20PX66	20PX79	1UGU1
01383	10	3	20PX54	20PX67	20PX80	3ZK61
01384	10	4	20PX55	20PX68	20PX81	1UGU2

### Features:

- Excellent resistance to oil and moisture
- Good tensile strength, elongation and aging characteristics
- High flexibility
- Excellent abrasion resistance
- Water-resistant (if properly sealed and terminated)
- UL Listed and CSA Certified for indoor and outdoor use
- Ozone-, sunlight (UV)- and weather-resistant
- TRU-Mark® sequential footage marking

### Applications:

- Portable tools and equipment
- Portable appliances
- Small motors and associated machinery

### Conductor Color Code Chart

No. of Conductors	Conductor Colors
2	Black, White
3	Black, White, Green
4	Black, White, Red, Green



**GenSPEED® 10,000 Category 6A:**

- Designed with individually shielded pairs for optimized isolation and immunity from external noise. Perfect for component upgrades to prepare your system for future 10 Gigabit applications.
- Individually pair shielded design allows for maximum pair separation, increasing key electrical performance parameters and providing EMI protection.

**Where Used:** Category 6A cable is high end cable that is primarily used to upgrade/expand existing infrastructure in data centers, higher education, healthcare, government, and financial facilities.

**GenSPEED® 6 Category 6:**

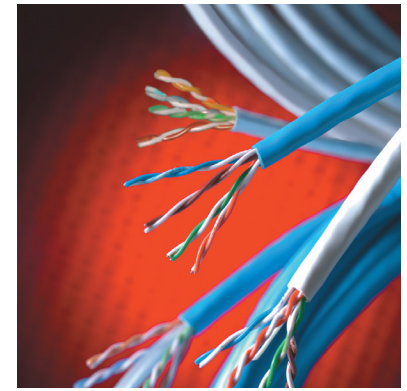
- Standard-compliant Category 6 cable engineered for consistent electrical performance.
- Performance guaranteed to 350 MHz
- Third-party verified for guaranteed performance
- Non-Plenum Jacket: Flame-Retardant PVC
- Plenum Jacket: Low-Smoke, Flame-Retardant PVC

**Where Used:** Category 6 cable is for many of the same installations as 6A, but where the highest performance standards and data speeds are not as stringent.

**GenSPEED® 5000 Category 5e:**

- Meets Category 5e requirements for present and future network requirements.
- Performance guaranteed to 200 MHz
- Third-party verified for guaranteed performance
- Non-Plenum Jacket: Flame-Retardant PVC
- Plenum Jacket: Low-Smoke, Flame-Retardant PVC

**Where Used:** Category 5e will be used in smaller MRO requests after the initial cable installation.








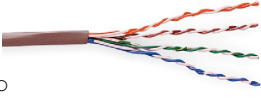



**CMR Riser (Non-Plenum) Cable:**

Term applied to vertical sections of cable. Term also applies to the space used for cable access between floors.

**CMP Plenum cable:**

A cable with flammability and smoke characteristics that meet the safety requirements of the National Electrical Code® (NEC®) that allow it to be routed in a plenum area without being enclosed in a conduit.

Jacket Color	CMR (Non-Plenum) 100 Foot Item No.	CMP (Plenum) 100 Foot Item No.	CMR (Non-Plenum) 1000 Foot Item No.	CMP (Plenum) 1000 Foot Item No.	Applications
     					
<b>GenSPEED® 10,000 Category 6A U/FTP (STP) Cable - 23AWG - 4 Pair</b>					
Blue	—	—	<b>1MWX9</b>	—	<ul style="list-style-type: none"> <li>• IEEE 802.3: 10G BASE-T, 1000 BASE-T, 100 BASE-TX, 10 BASE-T, PoE, PoE+</li> <li>• ANSI/TIA 854: 1000 BASE-TX</li> <li>• Digital Video</li> <li>• Broadband and Baseband Analog Video</li> <li>• CDDI, Token Ring, ATM</li> </ul> 
White	—	—	<b>1MWY2</b>	—	
Gray	—	—	<b>4DNV4</b>	—	
<b>GenSPEED® 6 Category 6 Cable - 23AWG - 4 Pair</b>					
Blue	—	—	<b>1MUL7</b>	<b>1MUH8</b>	<ul style="list-style-type: none"> <li>• IEEE 802.3: 1000 BASE-T, 100 BASE-TX, 10 BASE-T, PoE, PoE+</li> <li>• ANSI/TIA 854: 1000 BASE-TX</li> <li>• CDDI, Token Ring, ATM</li> <li>• Digital Video</li> <li>• Broadband and Baseband Analog Video</li> </ul> 
White	—	—	<b>1MUN1</b>	<b>1MUL2</b>	
Gray	—	—	<b>4DNW1</b>	<b>4DNV9</b>	
<b>GenSPEED® 5000 Category 5e Cable - 24AWG - 4 Pair</b>					
Blue	<b>30YJ26</b>	<b>30YJ23</b>	<b>5MD21</b>	<b>5MD17</b>	<ul style="list-style-type: none"> <li>• IEEE 802.3: 1000 BASE-T, 100 BASE-TX, 10 BASE-T, PoE, PoE+</li> <li>• CDDI, Token Ring, ATM</li> <li>• Broadband and Baseband Analog Video</li> </ul> 
White	<b>30YJ25</b>	<b>30YJ24</b>	<b>5MD20</b>	<b>5MD18</b>	
Gray	—	—	<b>3ZK44</b>	<b>5MD19</b>	



**For more great General Cable products, please visit [Grainger.com](http://Grainger.com)® and search for "Carol®"**

- |   |  |   |
|---|--|---|
| <ul style="list-style-type: none"> <li>• Welding Cable</li> <li>• Extension Cords</li> <li>• Copper Premise</li> <li>• Fiber Optic Cables</li> <li>• Hook-Up Wire</li> <li>• Communication Cables</li> <li>• Control Cables</li> <li>• Computer Cables</li> </ul> | <ul style="list-style-type: none"> <li>• Coaxial Cables</li> <li>• Microphone Cables</li> <li>• Fire Alarm Cable</li> <li>• Sound &amp; Security Cables</li> <li>• Audio/Video Cables</li> <li>• Broadcast Cables</li> <li>• Industrial Ethernet</li> <li>• Irrigation Cables</li> </ul> | <ul style="list-style-type: none"> <li>• Underground Cables</li> <li>• Heavy-Duty Industrial Power</li> <li>• Automotive Cables</li> <li>• Building Wire</li> <li>• Other Specialty Cables</li> </ul> |
|---|--|---|

For more information, contact your Grainger Representative or visit [Grainger.com](http://Grainger.com)®