



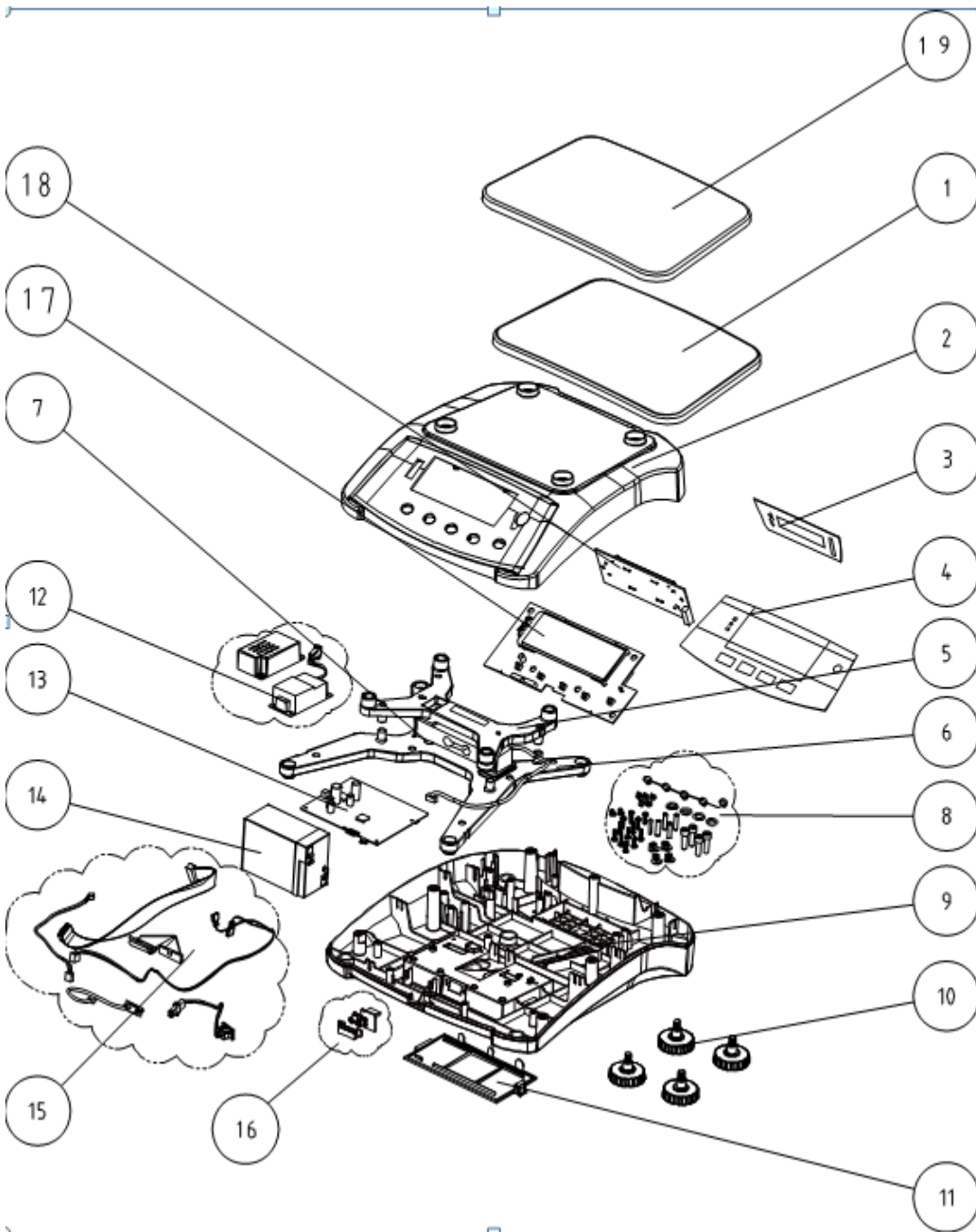
AfterMarket
Parts • Service • Support • Accessories

Service Parts List

Click on the model being serviced

V71P1502T
V71P3T
V71P6T
V71P15T
V71P30T

Note: In one box models are using same spare part



Part numbers are subject to change without notice.

<u>Drawing Item</u>	<u>Part Number</u>	<u>Description</u>
1	30037417	Pan,Plastic,R31,RC31,V71
2	30037395	Housing,Top,V71
3	30025998	Function Label,Rear,EN,V71
	30060923	Function Label,Rear,JP,V71
	30037467	Function Label,Rear,KR,V71
4	30025997	Function Label, Front,EN,V71
	30060922	Function Label, Front,JP,V71
	30037466	Function Label, Front,KR,V71
5	30037434	Spider,Upper, R31,R21,RC31,RC21,V71
6	30037401	LoadCell AMI C3 3kg,V71P1502T
	30037402	LoadCell AMI C3 5kg ,V71P3T
	30037403	LoadCell AMI C3 11kg ,V71P6T
	30037404	LoadCell AMI C3 22kg ,V71P15T
	30037405	LoadCell AMI C3 40kg,V71P30T
7	30037435	Spider,Down, R31,R21,RC31,RC21,V71
8	30037420	Hardware Kit,R31,R21,RC31,RC21,V71
9	30037400	Housing,Bottom,V71
10	30037421	Feet,R31,R21,RC31,RC21,V71
11	30037422	Cover,Option, R31,R21,RC31,RC21,V71
12	30037392	Switch Power, R31,RC31,V71
13	30037428	PCBA,Main,R31,RC31,V71
14	71168359	Battery,Lead Acid,R31,R21,RC31,RC21,V71
15	30037419	Harness,R31,R21,RC31,RC21,V71
16	30037438	PCBA,IR sensor with a IR cover,V71P
17	30037430	PCBA,Display,LCD,R31,R21,V71
18	30037433	PCBA,Display,LCD,rear,V71
19	30037452	Accessory, Pan SST R31 RC33 V71
NA	30037383	Packaging Box carton,R31,R21,RC31,RC21,V71
NA	30037384	Packaging Box,complete,R31,R21,RC31,RC21,V71
NA	30037457	Manual, Instr.,JP,V71
NA	30060919	Manual, Instr.,KR,V71
NA	72200232	Line Cord , US
NA	72200229	Line Cord, EU
NA	72200228	Line Cord, AU
NA	72200231	Line Cord, GB
NA	72200230	Line Cord, JP
NA	30031898	Manual,CD, EN ES FR DE IT, V71