



**AfterMarket**  
Parts • Service • Support • Accessories

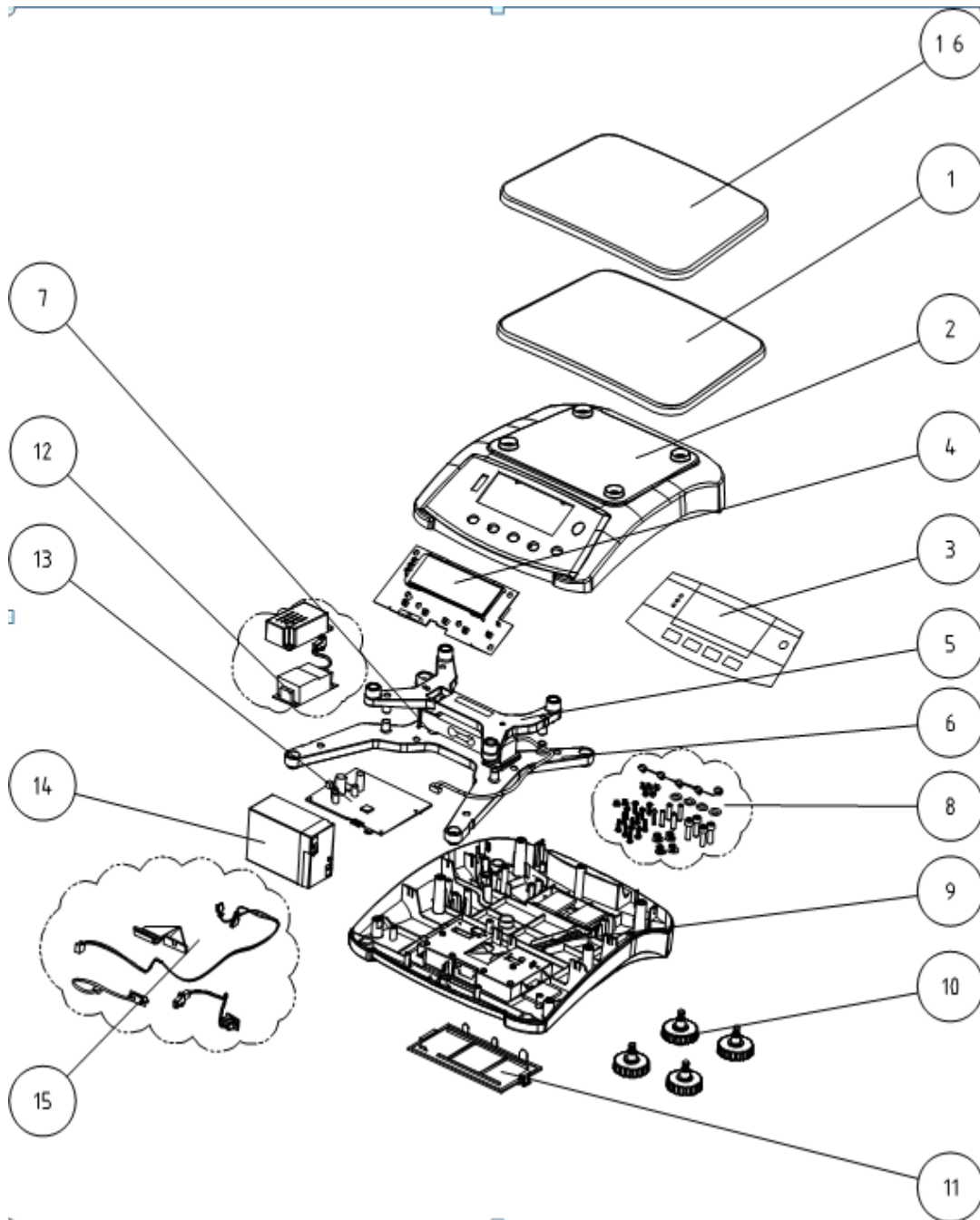
### Service Parts List

Click on the model being serviced

<a href="#"><u>R31P1502</u></a>
<a href="#"><u>R31P3</u></a>
<a href="#"><u>R31P6</u></a>
<a href="#"><u>R31P15</u></a>
<a href="#"><u>R31P30</u></a>
<a href="#"><u>R31PE1502JP</u></a>
<a href="#"><u>R31PE3JP</u></a>
<a href="#"><u>R31PE6 JP</u></a>
<a href="#"><u>R31PE15 JP</u></a>
<a href="#"><u>R31PE30 JP</u></a>

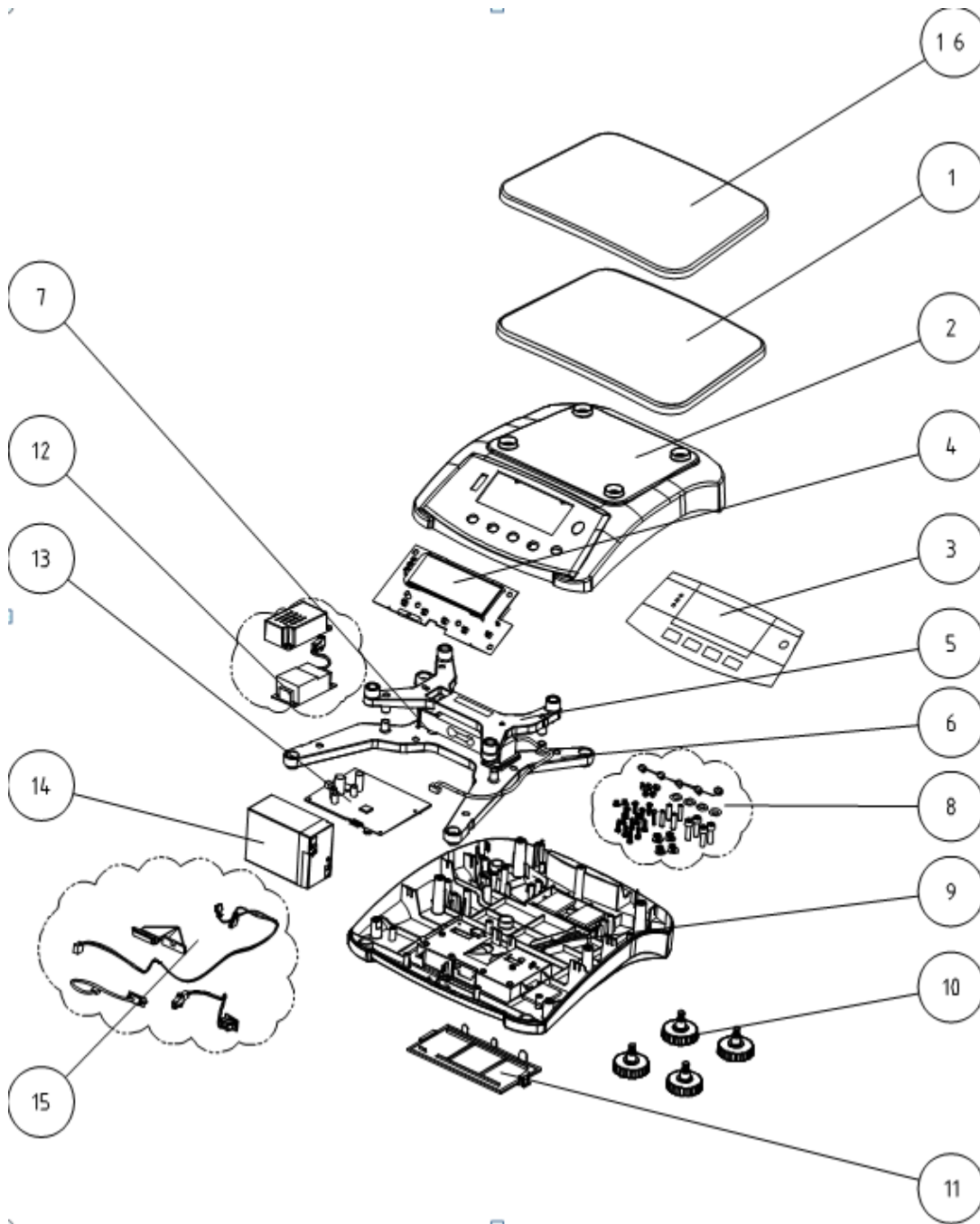
<a href="#"><u>RC31P1502</u></a>
<a href="#"><u>RC31P3</u></a>
<a href="#"><u>RC31P6</u></a>
<a href="#"><u>RC31P15</u></a>
<a href="#"><u>RC31P30</u></a>

**Note: In one box models are using same spare part**



Part numbers are subject to change without notice.

<u>Drawing Item</u>	<u>Part Number</u>	<u>Description</u>
1	30037417	Pan,Plastic,R31,RC31,V71
2	30037393	Housing,Top,R31
3	30025994	Function Label,R31, English
	30060924	Function Label, R31PE, Japanese
	30037465	Function Label, R31, KR
4	30037430	PCBA,Display,LCD,R31,R21,V71
	30037432	PCBA, Display, LED, R31JP,R21
5	30037434	Spider,Upper, R31,R21,RC31,RC21,V71
6	30037401	LoadCell AMI C3 3kg, R31P1502, R31PE1502JP
	30037402	LoadCell AMI C3 5kg,R31P3, R31PE3JP
	30037403	LoadCell AMI C3 11kg,R31P6, R31PE6JP
	30037404	LoadCell AMI C3 22kg ,R31P15, R31PE15JP
	30037405	LoadCell AMI C3 40kg,R31P30, R31PE30JP
7	30037435	Spider,Down, R31,R21,RC31,RC21,V71
8	30037420	Hardware Kit,R31,R21,RC31,RC21,V71
9	30037398	Housing,Bottom, R31
10	30037421	Feet,R31,R21,RC31,RC21,V71
11	30037422	Cover,Option, R31,R21,RC31,RC21,V71
12	30037392	Switch Power, R31,RC31,V71
13	30037428	PCBA,Main,R31,RC31,V71
14	71168359	Battery,Lead Acid,R31,R21,RC31,RC21,V71
15	30037419	Harness,R31,R21,RC31,RC21,V71
16	30037452	Accessory, Pan SST R31 RC33 V71
NA	30037383	Packaging Box carton,R31,R21,RC31,RC21,V71
NA	30037384	Packaging Box,complete,R31,R21,RC31,RC21,V71
NA	30037455	Manual, Instr.,JP,R31
NA	30060917	Manual, Instr.,KR,R31
NA	72200232	Line Cord , US
NA	72200229	Line Cord, EU
NA	72200228	Line Cord, AU
NA	72200231	Line Cord, GB
NA	72200230	Line Cord, JP
NA	30031898	Manual,CD, EN ES FR DE IT, V71



Part numbers are subject to change without notice.

<u>Drawing Item</u>	<u>Part Number</u>	<u>Description</u>
1	30037417	Pan,Plastic,R31,RC31,V71
2	30037394	Housing,Top,RC31
3	30025996	Function Label,RC31, English
	30060925	Function Label,RC31, Japanese
	30037464	Function Label,RC31, KR
4	30037431	PCBA,Display,LCD,RC31,RC21
5	30037434	Spider,Upper, R31,R21,RC31,RC21,V71
6	30037401	LoadCell AMI C3 3kg,RC31P1502
	30037402	LoadCell AMI C3 5kg,RC31P3
	30037403	LoadCell AMI C3 11kg,RC31P6
	30037404	LoadCell AMI C3 22kg ,RC31P15
	30037405	LoadCell AMI C3 40kg,,RC31P30
7	30037435	Spider,Down, R31,R21,RC31,RC21,V71
8	30037420	Hardware Kit,R31,R21,RC31,RC21,V71
9	30037398	Housing,Bottom, R31
10	30037421	Feet,R31,R21,RC31,RC21,V71
11	30037422	Cover,Option, R31,R21,RC31,RC21,V71
12	30037392	Switch Power, R31,RC31,V71
13	30037428	PCBA,Main,R31,RC31,V71
14	71168359	Battery,Lead Acid,R31,R21,RC31,RC21,V71
15	30037419	Harness,R31,R21,RC31,RC21,V71
16	30037452	Accessory, Pan SST R31 RC33 V71
NA	30037383	Packaging Box carton,R31,R21,RC31,RC21,V71
NA	30037384	Packaging Box,complete,R31,R21,RC31,RC21,V71
NA	30037456	Manual, Instr.,JP,RC31
NA	30060918	Manual, Instr.,KR,RC31
NA	72200232	Line Cord , US
NA	72200229	Line Cord, EU
NA	72200228	Line Cord, AU
NA	72200231	Line Cord, GB
NA	72200230	Line Cord, JP
NA	30031898	Manual,CD, EN ES FR DE IT, V71