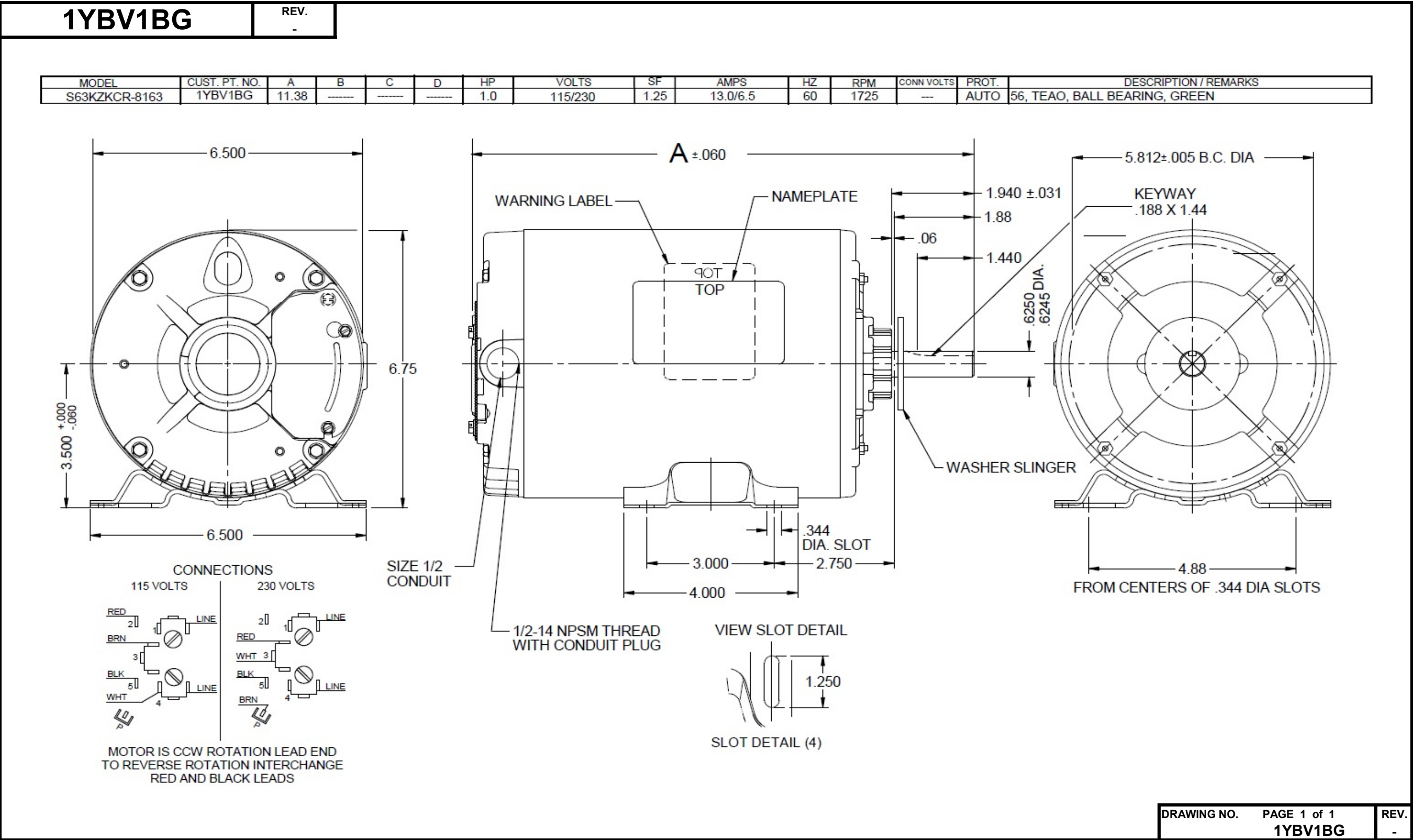


Dimensional Drawing



# Performance Data



**1YBV1BG**

REV.  
-

## SPLIT-PHASE & CAPACITOR START MOTOR PERFORMANCE

HP:	1						
Poles:	4						
Ambient (°C):	40						
Altitude (FASL):							
No. of Speeds:	1						
Volts:	115/230	115	230				
HZ:	60	60	60				
Service Factor:	1.25						
Efficiency:	@ Rated Load	67.1	67.4				
Power Factor:	@ Rated Load	73.8	73.3				
Amps:	@ No Load						
	@ Rated Load	13.06	6.55				
	@ Service Factor	15.65	7.82				
	@ Locked Rotor					79.89	
RPM:	@ Rated Load					1723	
Torques:	Breakdown	98.68	100.87				
	Locked Rotor	53.62	50.56				
	Pull-Up	53.07	48.9				
	Rated Load	48.63	48.63				
	Service Factor	61.9	61.82				
Watts:	Rated Load	1108	1105				
KVA Code:	L	L	K				
Temperature Rise:	@ Rated Load	TEAO	TEAO				
	@ Service Factor	-	-				
Thermal Protector:	Trip Temp (°C)	-	-				
Winding Material:	Start (Auxiliary)	Al	Al				
	Run (Main)	Cu	Cu				
Capacitor(s):	Start (MFD / Volts)					NA	
	No. of Start Capacitors						
	Run (MFD / Volts)					NA	
	No. of Run Capacitors						

### LOW SPEED PERFORMANCE DATA:

HP:							
Poles:							
Volts:							
HZ:							
Efficiency:	@ Rated Load						
Power Factor:	@ Rated Load						
Amps:	@ No Load						
	@ Rated Load						
	@ Service Factor						
	@ Locked Rotor						
Torques:	BreakDown						
	Locked Rotor						
	Pull-Up						
	Rated Load						
	Service Factor						
Watts:	@ Rated Load						
Temperature Rise:	@ Rated Load						
	@ Service Factor						

DRAWING NO. PAGE 1 of 1  
1YBV1BG

REV.  
-

Dayton Electric Mfg. Co. Lake Forest, IL 60045 USA

# Performance Data



1YBV1BG

REV.

-

## Dayton Manufacturing Company

### Motor Description

Model: S063KCR8163 1YBV1BG  
Motor ID:  
Poles: 4  
Volts: 115/230  
Frequency: 60  
HP: 1.0  
Speed: 1725  
Phase: 1  
Protector: CEJ51CV

Comments: ccwle

### Test Conditions

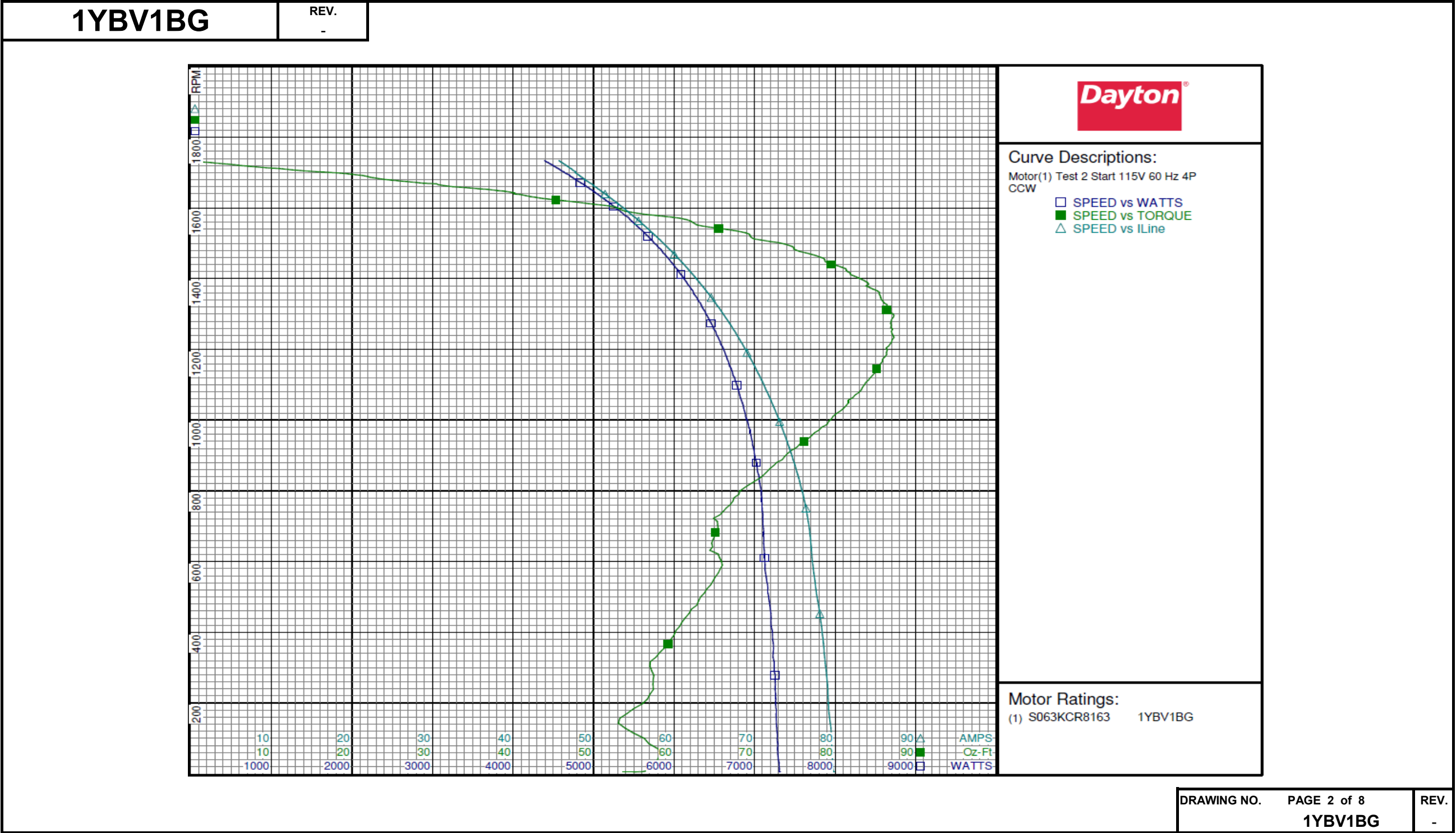
Test Type: Start Run Cap: 0  
Test Number: 2 Start Cap: 0µfd  
Poles: 4 Environment: 20.6 Deg C 19 % RH 1004 hPa  
Volts: 115 Tested: 11/13/2015 9:35:22 AM  
Hz: 60 Tested By: Sharp, Gerald  
Rotation: CCW Gear Ratio: 1:1  
Special Cond: Bearing Friction: -0.66 Oz-Ft  
Speed Conn: Windage Torque: -1.74 Oz-Ft  
TestBoard: Amtps Performance Fixture #1

Special Points	Vline (V)	Iline (A)	Imain (A)	Iaux (A)	Watts	RPM	Tq (Oz-ft)	HP	Eff (%)	PF (%)
	115.0	79.89	54.49	26.87	7319	4	53.62	0.003	0.0	79.7
	115.0	79.68	54.48	26.64	7305	29	57.68	0.020	0.2	79.7
PUT OZ-FT	115.0	79.40	54.53	26.19	7270	143	53.07	0.090	0.9	79.6
	115.0	79.32	54.49	26.11	7268	157	53.25	0.099	1.0	79.7
	115.0	78.94	54.26	25.74	7255	278	57.48	0.190	2.0	79.9
	115.0	78.42	53.95	25.34	7223	392	60.00	0.280	2.9	80.1
	115.0	77.75	53.62	24.86	7175	500	63.29	0.376	3.9	80.2
	115.0	77.18	53.51	24.29	7127	600	65.88	0.471	4.9	80.3
	115.0	76.80	53.43	23.74	7108	693	65.45	0.540	5.7	80.5
	115.0	76.09	52.86	23.38	7087	780	67.45	0.627	6.6	81.0
	115.0	75.13	52.13	23.01	7034	863	71.92	0.739	7.8	81.4
	115.0	74.04	51.30	22.64	6971	940	76.15	0.852	9.1	81.9
	115.0	72.85	50.40	22.28	6887	1011	79.78	0.960	10.4	82.2
	115.0	71.58	49.43	21.97	6806	1078	82.96	1.064	11.7	82.7
	115.0	70.28	48.50	21.70	6717	1139	84.94	1.152	12.8	83.1
	115.0	68.92	47.42	21.49	6617	1198	86.47	1.233	13.9	83.5
	115.0	67.53	46.29	21.33	6514	1251	86.99	1.296	14.8	83.9
	115.0	66.09	45.10	21.24	6395	1300	87.20	1.349	15.7	84.1
	115.0	64.63	43.88	21.21	6280	1346	85.66	1.373	16.3	84.5
	115.0	63.16	42.62	21.24	6157	1389	84.00	1.389	16.8	84.8
	115.0	61.70	41.34	21.33	6033	1428	81.34	1.383	17.1	85.0
	115.0	60.20	40.03	21.47	5897	1465	77.62	1.354	17.1	85.2
	115.0	58.75	38.72	21.65	5764	1498	73.71	1.315	17.0	85.3
	115.0	57.30	37.41	21.89	5632	1529	68.93	1.255	16.6	85.5
	115.0	55.89	36.10	22.15	5496	1558	62.39	1.157	15.7	85.5
62.31 OZ-FT	115.0	55.84	36.05	22.16	5490	1559	62.31	1.156	15.7	85.5
60.69 OZ-FT	115.0	55.26	35.50	22.29	5440	1570	60.69	1.135	15.6	85.6
	115.0	54.49	34.77	22.46	5361	1585	55.49	1.047	14.6	85.5
	115.0	53.15	33.47	22.78	5222	1609	50.37	0.965	13.8	85.4
	115.0	51.82	32.17	23.14	5093	1632	42.15	0.819	12.0	85.4
	115.0	50.53	30.87	23.49	4951	1654	35.71	0.703	10.6	85.2
	115.0	49.28	29.57	23.88	4815	1674	26.75	0.533	8.3	85.0
	115.0	48.11	28.33	24.22	4693	1693	20.45	0.412	6.6	84.8
	115.0	47.12	26.99	24.62	4555	1712	10.56	0.215	3.5	84.1
	115.0	45.95	25.71	25.03	4420	1730	1.51	0.031	0.5	83.6
	115.0	45.68	25.40	25.12	4389	1734	0.00	0.000	0.0	83.5

DRAWING NO. PAGE 1 of 8 REV.  
1YBV1BG -

Dayton Electric Mfg. Co. Lake Forest, IL 60045 USA

Performance Data



Dayton Electric Mfg. Co. Lake Forest, IL 60045 USA



# Performance Data



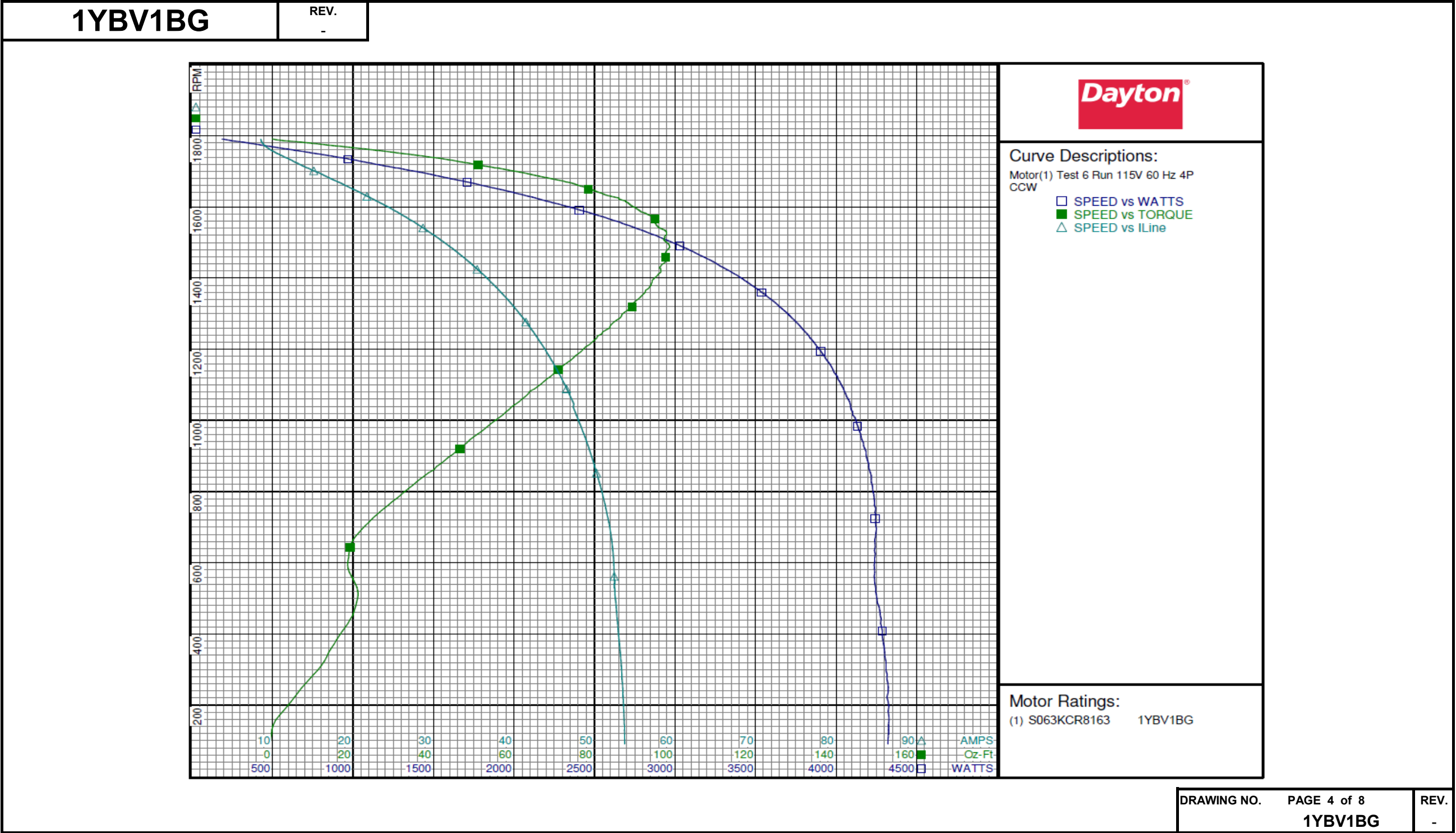
1YBV1BG		REV. -							
Dayton Manufacturing Company									
Motor Description				Test Conditions					
Model:	S063KCR8163	1YBV1BG	Test Type:	Run	Run Cap:	0			
Motor ID:			Test Number:	6	Start Cap:	0µfd			
Poles:	4		Poles:	4	Environment:	20.7 Deg C 19 % RH 1003 hPa			
Volts:	115/230		Volts:	115	Tested:	11/13/2015 2:08:27 PM			
Frequency:	60		Hz:	60	Tested By:	Sharp, Gerald			
HP:	1.0		Rotation:	CCW	Gear Ratio:	1:1			
Speed:	1725		Special Cond:		Bearing Friction:	-0.44 Oz-Ft			
Phase:	1		Speed Conn:		Windage Torque:	-1.48 Oz-Ft			
Protector:	CEJ51CV		TestBoard:	Amps Performance	Fixture #1				
Special Points	Vline (V)	Iline (A)	Watts	RPM	Tq (Oz-ft)	HP	Eff (%)	PF (%)	
0 OZ-FT	115.0	8.55	187	1791	0.00	0.000	0.0	19.0	
	115.0	8.55	187	1791	0.00	0.000	0.0	19.0	
	115.0	9.03	453	1772	15.07	0.318	52.4	43.6	
	115.0	10.29	718	1754	29.86	0.623	64.8	60.7	
	115.0	12.01	970	1735	42.42	0.876	67.4	70.2	
48.63 OZ-FT	115.0	13.06	1108	1723	48.63	0.998	67.1	73.8	
1 HP	115.0	13.08	1111	1723	48.76	1.000	67.1	73.9	
1.25 HP	115.0	13.86	1212	1714	53.01	1.082	66.6	76.0	
	115.0	15.65	1425	1696	61.90	1.250	65.4	79.2	
	115.0	16.01	1466	1693	63.47	1.279	65.1	79.6	
	115.0	18.15	1708	1670	72.95	1.450	63.3	81.8	
	115.0	20.38	1945	1646	79.90	1.565	60.0	83.0	
	115.0	22.69	2178	1619	86.79	1.673	57.3	83.5	
	115.0	25.01	2407	1591	90.99	1.724	53.4	83.7	
	115.0	27.35	2630	1560	95.11	1.767	50.1	83.6	
	115.0	29.63	2837	1526	97.91	1.779	46.8	83.2	
	115.0	31.89	3033	1490	98.62	1.749	43.0	82.7	
	BDT OZ-FT	115.0	32.13	3051	1486	98.68	1.746	42.7	82.6
	115.0	34.12	3217	1450	97.84	1.689	39.2	82.0	
	115.0	36.29	3386	1408	95.68	1.603	35.3	81.1	
	115.0	38.36	3537	1360	92.56	1.498	31.6	80.2	
	115.0	40.33	3674	1310	88.24	1.376	27.9	79.2	
115.0	42.22	3797	1254	82.87	1.237	24.3	78.2		
115.0	43.99	3906	1194	76.71	1.090	20.8	77.2		
115.0	45.64	3997	1130	69.68	0.937	17.5	76.2		
115.0	47.14	4075	1060	61.97	0.782	14.3	75.2		
115.0	48.28	4134	984	53.59	0.628	11.3	74.5		
115.0	49.55	4186	904	44.72	0.481	8.6	73.5		
115.0	50.70	4225	817	34.74	0.338	6.0	72.5		
115.0	51.68	4244	724	24.77	0.213	3.8	71.4		
115.0	52.29	4243	625	18.99	0.141	2.5	70.6		
115.0	52.53	4245	520	21.17	0.131	2.3	70.3		
115.0	52.95	4287	407	17.31	0.084	1.5	70.4		
115.0	53.39	4317	286	10.25	0.035	0.6	70.3		
115.0	53.67	4329	157	0.79	0.001	0.0	70.1		

DRAWING NO. 1YBV1BG

PAGE 3 of 8

REV. -

Performance Data



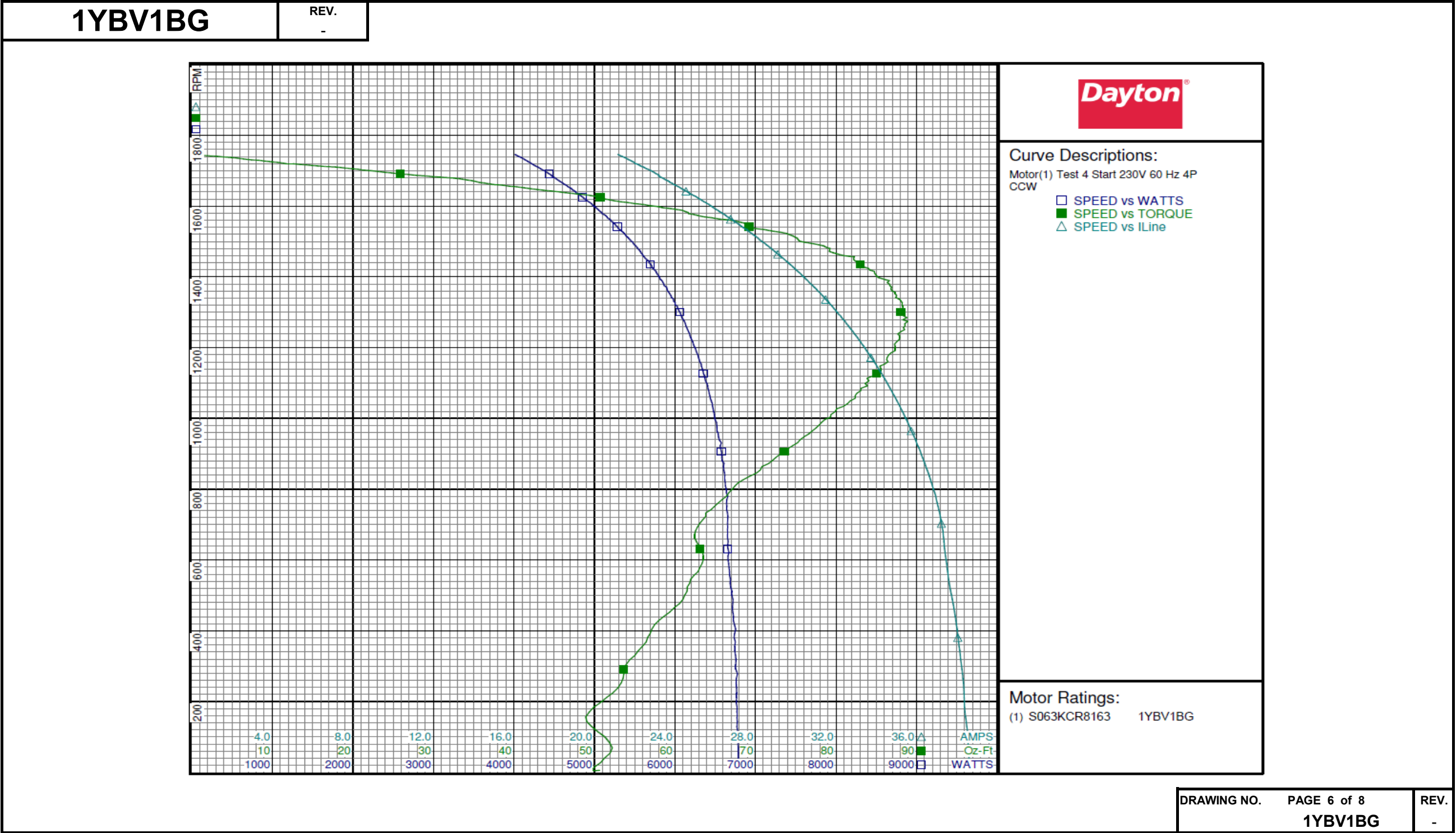
# Performance Data



1YBV1BG			REV. -							
Dayton Manufacturing Company										
Motor Description				Test Conditions						
Model:		S063KCR8163 1YBV1BG		Test Type:		Start		Run Cap:		0
Motor ID:				Test Number:		4		Start Cap:		0µfd
Poles:		4		Poles:		4		Environment:		20.7 Deg C 19 % RH 1003 hPa
Volts:		115/230		Volts:		230		Tested:		11/13/2015 1:28:50 PM
Frequency:		60		Hz:		60		Tested By:		Sharp, Gerald
HP:		1.0		Rotation:		CCW		Gear Ratio:		1:1
Speed:		1725		Special Cond:				Bearing Friction:		-0.51 Oz-Ft
Phase:		1		Speed Conn:				Windage Torque:		-1.58 Oz-Ft
Protector:		CEJ51CV		TestBoard:		Amps Performance Fixture #1				
Special Points		Vline (V)	Iline (A)	Imain(A)	Iaux (A)	Watts	RPM	Tq(Oz-ft)	HP	Eff (%)
		230.0	38.71	17.885	23.51	6801	5	50.56	0.003	0.0
		230.0	38.61	17.842	23.34	6787	39	51.22	0.024	0.3
PUT OZ-FT		230.0	38.44	17.878	22.89	6767	156	48.90	0.091	1.0
		230.0	38.39	17.824	22.81	6771	183	49.88	0.109	1.2
		230.0	38.20	17.558	22.53	6756	317	54.36	0.205	2.3
		230.0	37.93	17.328	22.17	6728	441	58.64	0.308	3.4
		230.0	37.57	17.210	21.67	6679	556	62.35	0.413	4.6
		230.0	37.34	17.139	21.13	6652	663	62.44	0.492	5.5
		230.0	37.03	16.779	20.77	6642	761	65.38	0.592	6.7
		230.0	36.53	16.300	20.47	6607	854	70.60	0.718	8.1
		230.0	35.95	15.817	20.19	6550	940	75.55	0.845	9.6
		230.0	35.31	15.337	19.91	6481	1019	79.89	0.969	11.2
		230.0	34.62	14.843	19.69	6406	1092	83.90	1.091	12.7
		230.0	33.89	14.345	19.50	6309	1160	86.45	1.193	14.1
		230.0	33.15	13.837	19.38	6207	1222	87.82	1.277	15.3
		230.0	32.37	13.333	19.34	6104	1279	88.31	1.344	16.4
		230.0	31.57	12.842	19.35	5982	1332	88.07	1.396	17.4
		230.0	30.76	12.375	19.43	5860	1380	86.63	1.423	18.1
		230.0	29.94	11.939	19.56	5725	1424	84.01	1.424	18.6
		230.0	29.11	11.551	19.74	5593	1464	80.22	1.398	18.7
		230.0	28.30	11.194	19.98	5456	1501	75.49	1.349	18.4
		230.0	27.48	10.879	20.25	5299	1536	70.11	1.282	18.0
		230.0	26.69	10.621	20.57	5157	1567	64.42	1.202	17.4
62.31 OZ-FT		230.0	26.45	10.556	20.66	5116	1576	62.31	1.169	17.0
60.69 OZ-FT		230.0	26.11	10.462	20.82	5052	1589	60.69	1.148	16.9
		230.0	25.92	10.420	20.91	5020	1595	58.43	1.110	16.5
		230.0	25.16	10.266	21.28	4867	1622	50.86	0.982	15.1
		230.0	24.41	10.169	21.66	4720	1647	42.83	0.840	13.3
		230.0	23.70	10.117	22.06	4570	1670	35.17	0.699	11.4
		230.0	23.07	10.109	22.45	4436	1691	25.90	0.521	8.8
		230.0	22.36	10.144	22.86	4283	1711	16.80	0.342	6.0
		230.0	21.71	10.239	23.37	4138	1730	7.38	0.152	2.7
		230.0	21.16	10.331	23.68	4012	1746	0.00	0.000	0.0
DRAWING NO. PAGE 5 of 8										REV.
1YBV1BG										-

Dayton Electric Mfg. Co. Lake Forest, IL 60045 USA

Performance Data





# Performance Data



1YBV1BG

REV.

-

## Dayton Manufacturing Company

### Motor Description

Model: S063KCR8163 1YBV1BG  
 Motor ID:  
 Poles: 4  
 Volts: 115/230  
 Frequency: 60  
 HP: 1.0  
 Speed: 1725  
 Phase: 1  
 Protector: CEJ51CV

### Test Conditions

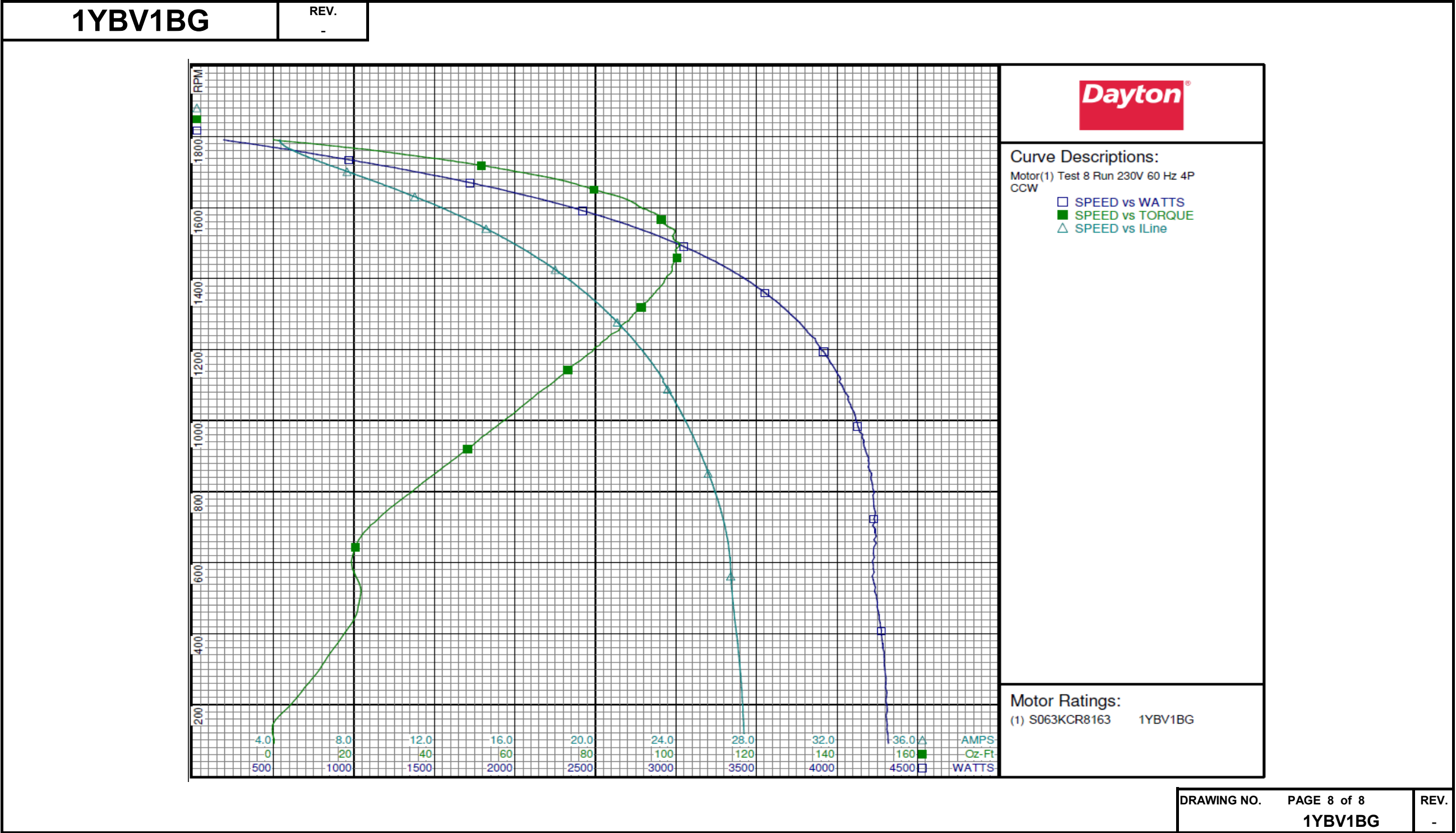
Test Type: Run Run Cap: 0  
 Test Number: 8 Start Cap: 0µfd  
 Poles: 4 Environment: 20.7 Deg C 19 % RH 1003 hPa  
 Volts: 230 Tested: 11/13/2015 2:06:06 PM  
 Hz: 60 Tested By: Sharp, Gerald  
 Rotation: CCW Gear Ratio: 1:1  
 Special Cond: Bearing Friction: -0.44 Oz-Ft  
 Speed Conn: Windage Torque: -1.48 Oz-Ft  
 TestBoard: Amtps Performance Fixture #1

Special Points	Vline (V)	Iline (A)	Watts	RPM	Tq (Oz-ft)	HP	Eff (%)	PF (%)
0 OZ-FT	230.0	4.30	190	1791	0.00	0.000	0.0	19.2
	230.0	4.30	190	1791	0.00	0.000	0.0	19.2
	230.0	4.58	464	1772	16.04	0.339	54.4	44.0
	230.0	5.24	722	1754	30.03	0.627	64.7	59.9
	230.0	6.05	968	1735	42.33	0.874	67.4	69.5
48.63 OZ-FT	230.0	6.55	1105	1724	48.63	0.998	67.4	73.3
1 HP	230.0	6.56	1107	1724	48.72	1.000	67.4	73.3
	230.0	7.04	1228	1714	54.00	1.102	66.9	75.8
1.25 HP	230.0	7.82	1409	1699	61.82	1.250	66.2	78.4
	230.0	8.07	1471	1693	64.51	1.300	65.9	79.2
	230.0	9.20	1721	1670	73.85	1.468	63.6	81.3
	230.0	10.34	1961	1645	81.37	1.594	60.6	82.5
	230.0	11.48	2192	1620	88.38	1.704	58.0	83.0
	230.0	12.68	2421	1591	93.20	1.765	54.4	83.0
	230.0	13.86	2640	1561	96.55	1.794	50.7	82.8
	230.0	15.04	2852	1527	99.53	1.809	47.3	82.4
BDT OZ-FT	230.0	16.08	3029	1494	100.87	1.794	44.2	81.9
	230.0	16.20	3049	1490	100.69	1.786	43.7	81.8
	230.0	17.33	3232	1450	99.92	1.725	39.8	81.1
	230.0	18.43	3399	1407	97.80	1.638	36.0	80.2
	230.0	19.50	3554	1360	94.83	1.535	32.2	79.2
	230.0	20.50	3690	1309	90.44	1.409	28.5	78.2
	230.0	21.47	3813	1254	85.73	1.279	25.0	77.2
	230.0	22.37	3916	1195	79.21	1.126	21.5	76.1
	230.0	23.21	4007	1129	71.75	0.964	18.0	75.1
	230.0	23.89	4067	1060	63.89	0.806	14.8	74.0
	230.0	24.60	4129	984	55.48	0.650	11.7	73.0
	230.0	25.25	4187	904	46.31	0.498	8.9	72.1
	230.0	25.84	4221	816	36.21	0.352	6.2	71.0
	230.0	26.34	4230	723	26.04	0.224	4.0	69.8
	230.0	26.65	4226	625	19.80	0.147	2.6	68.9
	230.0	26.78	4233	520	21.74	0.134	2.4	68.7
	230.0	26.99	4277	407	18.05	0.087	1.5	68.9
	230.0	27.21	4299	286	10.59	0.036	0.6	68.7
	230.0	27.35	4308	157	0.50	0.001	0.0	68.5

DRAWING NO.	PAGE 7 of 8	REV.
	1YBV1BG	-

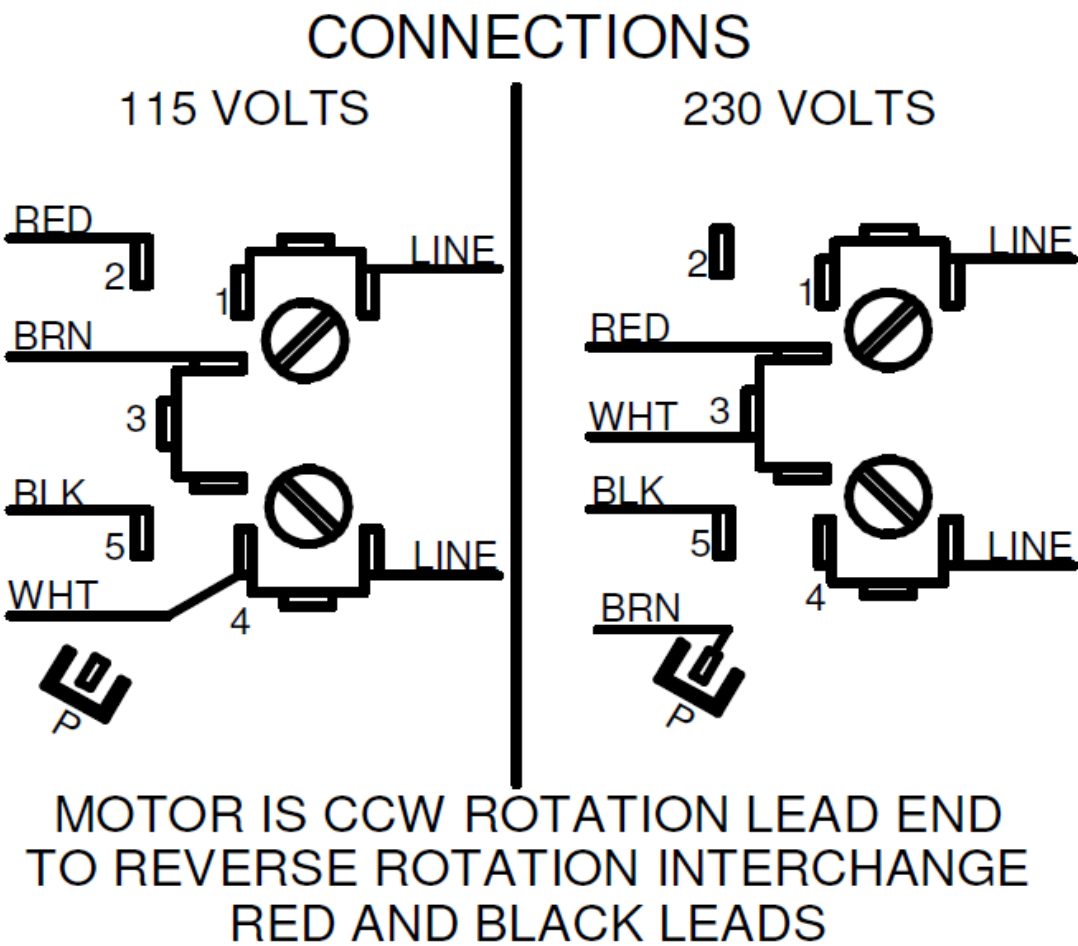
Dayton Electric Mfg. Co. Lake Forest, IL 60045 USA

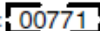
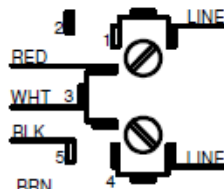
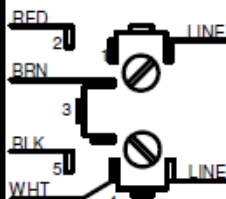
Performance Data



1YBV1BG

REV.  
0



**Dayton**®**AGRICULTURAL FAN MOTOR****HP:** 1.0  
**VOLTS:** 115/230**BAR CODE****Part No** 1YBV1BG**AMPS:** 13.0/6.5**PH:** 1**RPM:** 1725**HZ:** 60**DUTY:** CONT**FR:** 56**SF:** 1.25**INS CL:** B**KVA CODE:** K**AMB:** 40 °C**ENCL:** TEAO**SFA:** 15.7/7.8**THERMALLY PROTECTED:** AUTO**MFG. NO** **PROT. CODE:** **AVG. F.L.  
EFF.****MTR REF:** S63KZKCR-8163**Disconnect Power Before Making Any  
Electrical Connections or Changes****CONNECTIONS****115 VOLTS****230 VOLTS**

E37403



258501

**MOTOR IS CCW ROTATION LEAD END  
TO REVERSE ROTATION INTERCHANGE  
RED AND BLACK LEADS****Mfd for Dayton Electric Mfg. Co., Lake Forest, IL 60045 USA****Made in Mexico**