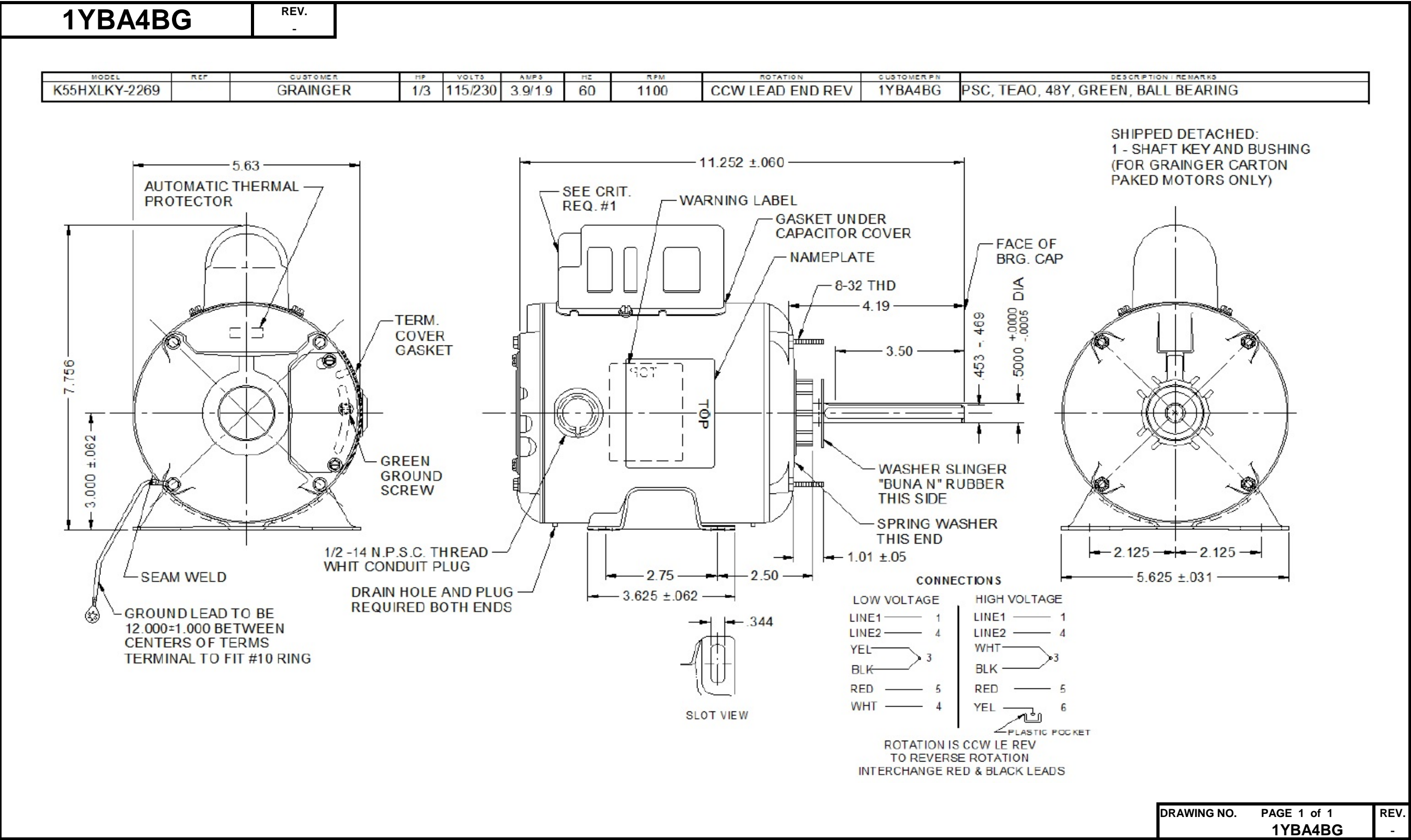


Dimensional Drawing



# Performance Data



**1YBA4BG**

REV.  
X

## SHADED-POLE & PSC MOTOR PERFORMANCE

HP:	1/3							
Poles:	6							
Ambient (°C):	40							
Altitude (FASL):								
No. of Speeds:	1							
HIGH SPEED								
Volts:	115/230	115	230					
HZ:	60	60	60					
Service Factor:	1							
Efficiency:	@ Rated Load	61.5	60.4					
Power Factor:	@ Rated Load	91.5	91.0					
Amps:	@ No Load							
	@ Rated Load	3.93	1.99					
	@ Locked Rotor	11.95	6					
RPM:	@ Rated Load	1122	1122					
Torques:	Breakdown	47.69	48.29					
	Locked Rotor	7.31	7.46					
	Pull-Up	7.25	7.3					
	Rated Load	24.95	25.5					
	Service Factor							
Watts:	Rated Load	413.9	417.4					
Temperature Rise:	@ Rated Load	TEAO	TEAO					
Thermal Protector:	Trip Temp (°C)	TEAO	TEAO					
Winding Material:	Start (Auxiliary)	Cu	Cu					
	Run (Main)	Cu	Cu					
Capacitor(s):	Run (MFD / Volts)	10/370V						
	No. of Run Capacitors							
MEDIUM-HIGH SPEED								
HP:								
Volts:								
HZ:								
Efficiency:	@ Rated Load							
Power Factor:	@ Rated Load							
Amps:	@ No Load							
	@ Rated Load							
	@ Locked Rotor							
Torques: Oz.Ft. / Lb.In. (Circle One)	Breakdown							
	Locked Rotor							
	Pull-Up							
	Rated Load							
Watts:	@ Rated Load							
Temperature Rise:	@ Rated Load							

DRAWING NO. PAGE 1 of 2  
1YBA4BG

REV.  
X

**Dayton Electric Mfg. Co. Lake Forest, IL 60045 USA**

# Performance Data



**1YBA4BG**

REV.  
-

## Dayton Manufacturing Company

### Motor Description

Model: K055LKY226901 1YBA4BG  
Motor ID: 2  
Poles: 6  
Volts: 115/230  
Frequency: 60  
HP: 1/3  
Speed: 1140  
Phase: 1  
Protector:

### Test Conditions

Test Type: Start  
Test Number: 5  
Poles: 6  
Volts: 115  
Hz: 60  
Rotation:  
Special Cond:  
Speed Conn:  
TestBoard: Amtps Performance Fixture #4  
Run Cap: 10  
Start Cap: 0µfd  
Environment: 20.3 Deg C 38 % RH 990 hPa  
Tested: 2/7/2013 3:42:35 PM  
Tested By: Sharp, Gerald  
Gear Ratio: 1:1  
Bearing Friction: -0.51 Oz-Ft  
Windage Torque: -2.09 Oz-Ft

Special Points	Vline(V)	Vaux(V)	Vcap(V)	Iline(A)	Imain(A)	Iaux(A)	Watts	RPM	Tq(Oz-ft)	HP	Eff (%)	PF (%)	Cap
PUT OZ-FT	115.0	49.6	148.5	11.957	12.224	0.563	974.0	2	7.31	0.000	0.0	70.8	10.1
	115.0	49.7	148.6	11.954	12.221	0.563	973.0	4	7.25	0.000	0.0	70.8	10.0
	115.0	49.5	148.2	11.948	12.211	0.561	973.7	10	7.55	0.001	0.1	70.9	10.0
	115.0	50.4	142.2	11.906	12.135	0.537	969.8	102	11.14	0.014	1.0	70.8	10.0
	115.0	53.5	135.9	11.815	12.003	0.512	964.8	211	12.87	0.032	2.5	71.0	10.0
	115.0	57.4	130.9	11.681	11.834	0.493	956.6	314	15.13	0.057	4.4	71.2	10.0
	115.0	62.9	127.3	11.536	11.654	0.478	950.4	404	16.93	0.081	6.4	71.6	10.0
	115.0	70.3	125.8	11.389	11.468	0.472	948.5	479	19.12	0.109	8.6	72.4	9.9
	115.0	80.3	126.6	11.150	11.182	0.475	942.3	555	22.35	0.148	11.7	73.5	10.0
	115.0	91.1	129.5	10.860	10.845	0.487	933.0	624	25.39	0.188	15.1	74.7	10.0
	115.0	102.5	133.5	10.535	10.474	0.502	920.1	686	28.43	0.232	18.8	75.9	10.0
	115.0	114.8	138.8	10.176	10.058	0.521	903.2	743	31.34	0.277	22.9	77.2	10.0
	115.0	127.1	145.3	9.795	9.624	0.546	884.0	794	33.82	0.320	27.0	78.5	10.0
	115.0	139.8	153.1	9.398	9.182	0.576	860.9	839	35.92	0.359	31.1	79.7	10.0
	115.0	153.2	162.4	8.978	8.692	0.611	834.3	880	37.53	0.393	35.2	80.8	10.0
	115.0	166.6	172.8	8.540	8.199	0.650	804.8	917	38.73	0.423	39.2	81.9	10.0
	115.0	180.3	184.3	8.073	7.676	0.694	771.1	950	39.75	0.450	43.5	83.1	10.0
	115.0	193.8	196.0	7.613	7.162	0.739	735.3	980	39.55	0.461	46.8	84.0	10.0
	115.0	207.1	208.4	7.142	6.641	0.786	696.8	1006	39.29	0.471	50.4	84.8	10.0
	115.0	220.3	221.1	6.673	6.124	0.835	655.8	1031	38.29	0.470	53.5	85.5	10.0
	115.0	232.8	233.3	6.227	5.637	0.882	615.4	1052	37.20	0.466	56.5	85.9	10.0
	115.0	246.1	246.4	5.768	5.136	0.933	572.1	1072	35.50	0.453	59.0	86.3	10.0
	115.0	258.8	259.6	5.341	4.675	0.982	529.6	1089	33.46	0.434	61.1	86.2	10.0
	115.0	272.0	273.4	4.931	4.241	1.034	486.7	1106	31.05	0.409	62.6	85.8	10.0
	115.0	285.7	288.0	4.550	3.846	1.088	446.3	1120	28.30	0.377	63.1	85.3	10.0
28.2 OZ-FT	115.0	286.3	288.6	4.536	3.831	1.090	444.7	1121	28.20	0.376	63.1	85.3	10.0
	115.0	299.5	303.8	4.197	3.493	1.145	406.2	1135	25.39	0.343	63.0	84.2	10.0
24.6 OZ-FT	115.0	302.9	307.9	4.100	3.403	1.158	395.6	1137	24.60	0.333	62.8	83.9	10.0
0.333 HP	115.0	302.9	307.9	4.100	3.402	1.158	395.6	1137	24.60	0.333	62.8	83.9	10.0
1140 RPM	115.0	304.9	310.5	4.032	3.341	1.166	388.0	1140	23.98	0.325	62.6	83.7	10.0
	115.0	309.8	317.2	3.824	3.162	1.190	362.7	1147	21.91	0.299	61.5	82.5	10.0
	115.0	318.3	328.2	3.490	2.904	1.232	319.8	1158	18.16	0.250	58.4	79.7	10.0
	115.0	326.4	338.7	3.181	2.714	1.272	275.4	1168	14.08	0.196	53.0	75.3	10.0
	115.0	333.7	349.1	2.923	2.620	1.312	232.4	1179	9.84	0.138	44.3	69.1	10.0
	115.0	341.2	360.2	2.719	2.633	1.354	188.4	1190	5.23	0.074	29.3	60.3	10.0
	115.0	347.2	370.4	2.611	2.791	1.390	142.6	1199	0.15	0.002	1.1	47.5	10.0
	115.0	347.3	370.7	2.608	2.806	1.393	139.6	1200	0.00	0.000	0.0	46.5	10.0

DRAWING NO. PAGE 1 of 8

1YBA4BG

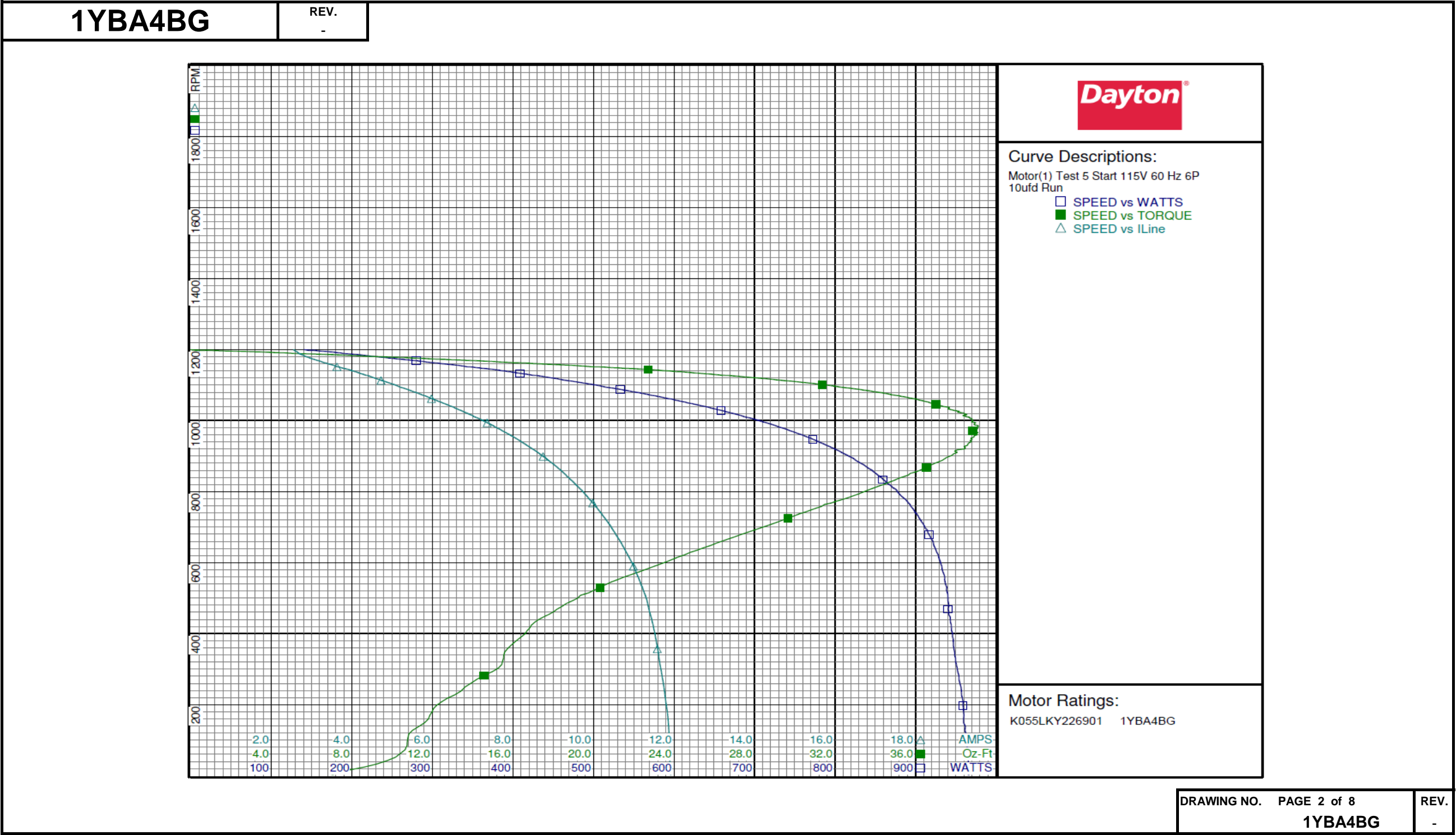
REV.

-

Dayton Electric Mfg. Co. Lake Forest, IL 60045 USA



Performance Data



Dayton Electric Mfg. Co. Lake Forest, IL 60045 USA

# Performance Data



1YBA4BG

REV.  
-

## Dayton Manufacturing Company

### Motor Description

Model: K055LKY226901 1YBA4BG  
Motor ID: 1  
Poles: 6  
Volts: 115/230  
Frequency: 60  
HP: 1/3  
Speed: 1100  
Phase: 1  
Protector:

### Test Conditions

Test Type: Run  
Test Number: 2  
Poles: 6  
Volts: 115  
Hz: 60  
Rotation:  
Special Cond:  
Speed Conn:  
TestBoard: Amtps Performance Fixture #4  
Run Cap: 10  
Start Cap: 0µfd  
Environment:  
Tested: 7/6/2010 2:53:21 PM  
Tested By: Sharp, Gerald  
Gear Ratio: 1:1  
Bearing Friction: -0.48 Oz-Ft  
Windage Torque: -2.22 Oz-Ft

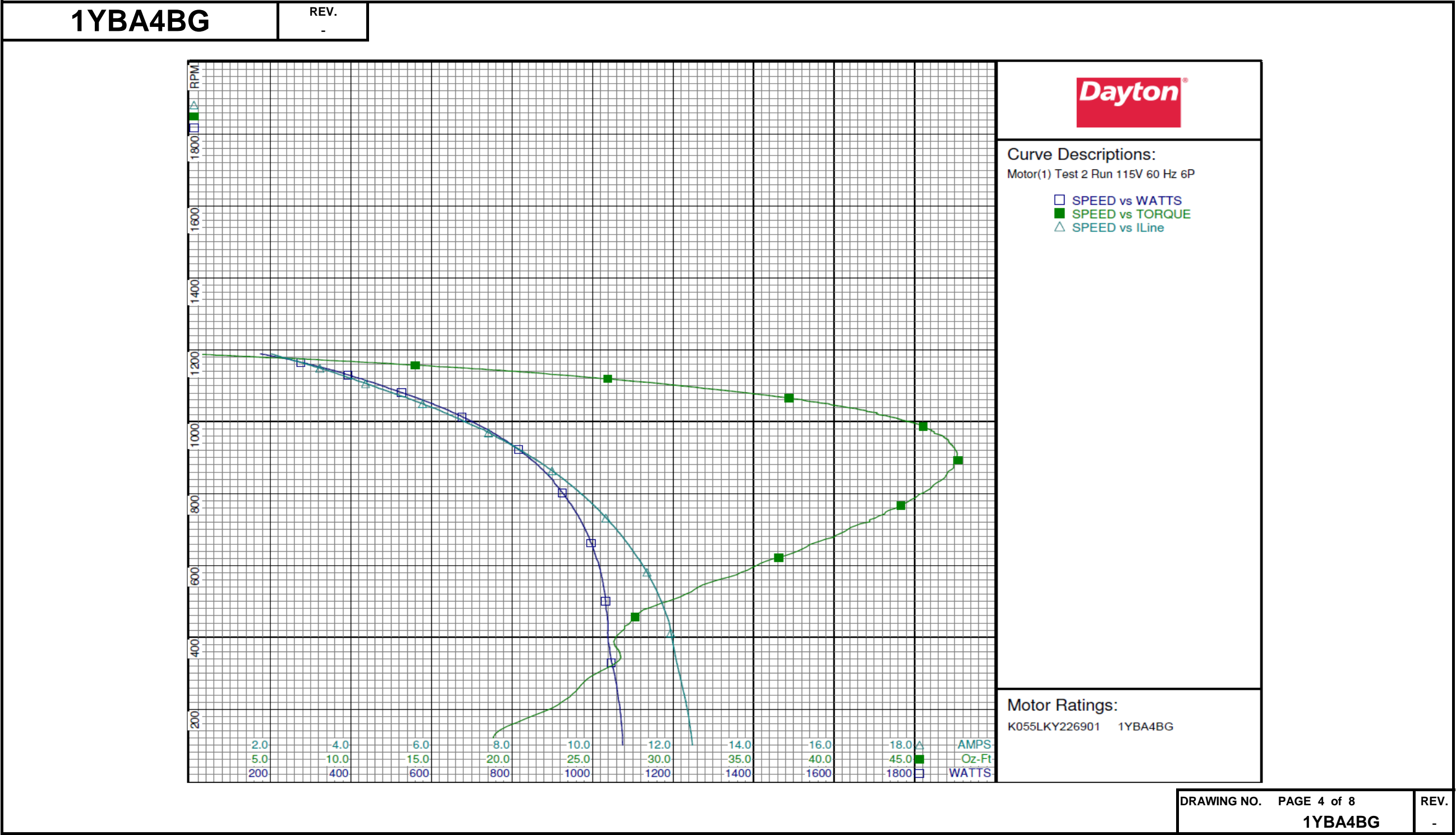
Special Points	Vline (V)	Vaux (V)	Vcap (V)	Iline (A)	Imain (A)	Iaux (A)	Watts	RPM	Tq (Oz-ft)	HP	Eff (%)	PF (%)	Cap
	115.0	343.4	360.7	2.014	1.982	2.019	174.6	1188	0.00	0.000	0.0	75.4	14.8
	115.0	340.8	356.2	2.216	1.880	1.992	206.2	1181	3.27	0.046	16.6	80.9	14.8
	115.0	337.0	349.6	2.476	1.838	1.957	242.0	1174	7.09	0.099	30.6	85.0	14.8
	115.0	331.4	341.6	2.738	1.871	1.912	276.1	1165	10.90	0.151	40.8	87.7	14.8
	115.0	323.2	330.6	3.049	2.012	1.852	313.8	1155	14.96	0.206	48.9	89.5	14.9
	115.0	313.5	318.9	3.372	2.249	1.787	351.3	1143	18.87	0.257	54.5	90.6	14.9
	115.0	302.8	306.7	3.735	2.575	1.719	392.1	1130	22.85	0.307	58.5	91.3	14.9
0.333 HP	115.0	297.2	300.5	3.933	2.770	1.684	413.9	1122	24.95	0.333	60.1	91.5	14.9
25.5 OZ-FT	115.0	295.8	298.8	3.988	2.825	1.675	419.9	1120	25.50	0.340	60.4	91.5	14.9
	115.0	292.0	294.7	4.125	2.964	1.652	434.7	1115	26.89	0.357	61.2	91.6	14.9
29.3 OZ-FT	115.0	285.0	287.0	4.389	3.241	1.610	462.9	1105	29.30	0.385	62.1	91.7	14.9
1100 RPM	115.0	281.5	283.3	4.522	3.384	1.589	476.4	1100	30.39	0.398	62.3	91.6	14.9
	115.0	280.9	282.8	4.540	3.403	1.586	478.3	1099	30.56	0.400	62.4	91.6	14.9
	115.0	268.9	270.3	5.009	3.911	1.516	525.7	1081	34.41	0.443	62.8	91.3	14.9
	115.0	256.4	256.9	5.507	4.467	1.442	575.7	1061	37.99	0.480	62.2	90.9	14.9
	115.0	243.3	243.7	6.025	5.044	1.369	626.2	1038	40.92	0.506	60.3	90.4	14.9
	115.0	230.0	230.6	6.557	5.649	1.295	675.7	1013	43.48	0.524	57.9	89.6	14.9
	115.0	213.6	215.0	7.224	6.412	1.206	734.6	980	45.81	0.535	54.3	88.4	14.9
	115.0	203.2	205.4	7.628	6.880	1.159	770.2	956	46.84	0.533	51.6	87.8	15.0
	115.0	189.4	193.2	8.181	7.517	1.090	815.9	922	47.50	0.521	47.7	86.7	15.0
BDT OZ-FT	115.0	178.9	184.5	8.603	8.007	1.042	848.8	893	47.69	0.507	44.6	85.8	15.0
	115.0	176.1	182.1	8.717	8.139	1.028	857.9	885	47.50	0.501	43.5	85.6	15.0
	115.0	162.9	171.8	9.223	8.729	0.971	895.0	844	46.89	0.471	39.3	84.4	15.0
	115.0	150.7	163.0	9.683	9.273	0.921	925.2	802	45.55	0.435	35.1	83.1	15.0
	115.0	138.8	155.3	10.117	9.785	0.879	952.4	758	43.78	0.395	30.9	81.9	15.0
	115.0	127.8	148.7	10.508	10.249	0.842	976.8	711	41.36	0.350	26.7	80.8	15.0
	115.0	117.4	143.5	10.859	10.669	0.813	996.5	662	38.77	0.306	22.9	79.8	15.0
	115.0	107.2	139.1	11.184	11.063	0.789	1013.3	611	35.74	0.260	19.1	78.8	15.0
	115.0	97.5	135.5	11.467	11.410	0.769	1024.4	556	32.57	0.216	15.7	77.7	15.1
	115.0	88.5	133.0	11.706	11.711	0.754	1032.9	500	29.70	0.177	12.8	76.7	15.0
	115.0	80.7	132.5	11.896	11.957	0.749	1038.0	444	27.38	0.145	10.4	75.9	15.0
	115.0	75.2	132.1	11.985	12.082	0.745	1038.5	389	26.31	0.122	8.7	75.4	15.0
	115.0	70.5	134.2	12.089	12.222	0.756	1047.0	330	26.48	0.104	7.4	75.3	15.0
	115.0	66.7	136.5	12.223	12.393	0.772	1060.0	266	24.27	0.077	5.4	75.4	15.0
	115.0	61.9	138.8	12.362	12.578	0.786	1068.2	194	22.02	0.051	3.5	75.1	15.0
	115.0	56.5	142.1	12.475	12.745	0.806	1074.3	105	18.85	0.024	1.6	74.9	15.0

DRAWING NO. PAGE 3 of 8  
1YBA4BG

REV.  
-

Dayton Electric Mfg. Co. Lake Forest, IL 60045 USA

Performance Data





# Performance Data



1YBA4BG

REV.  
-

## Dayton Manufacturing Company

### Motor Description

Model: K055LKY226901 1YBA4BG  
Motor ID: 2  
Poles: 6  
Volts: 115/230  
Frequency: 60  
HP: 1/3  
Speed: 1140  
Phase: 1  
Protector:

### Test Conditions

Test Type: Start  
Test Number: 2  
Poles: 6  
Volts: 230  
Hz: 60  
Rotation:  
Special Cond:  
Speed Conn:  
TestBoard: Aamps Performance Fixture #4  
Run Cap: 10  
Start Cap: 0µfd  
Environment: 20.5 Deg C 25 % RH 1004 hPa  
Tested: 2/8/2013 8:00:33 AM  
Tested By: Sharp, Gerald  
Gear Ratio: 1:1  
Bearing Friction: -0.58 Oz-Ft  
Windage Torque: -2.17 Oz-Ft

Special Points	Vline (V)	Vaux (V)	Vcap (V)	Iline (A)	Imain (A)	Iaux (A)	Watts	RPM	Tq (Oz-ft)	HP	Eff (%)	PF (%)	Cap
PUT OZ-FT	230.0	92.8	152.4	6.002	6.298	0.578	968.9	0	7.46	0.000	0.0	70.2	10.1
	230.0	92.9	152.4	6.000	6.294	0.577	968.2	8	7.30	0.001	0.1	70.2	10.1
	230.0	93.3	152.2	5.998	6.293	0.577	968.5	11	7.49	0.001	0.1	70.2	10.1
	230.0	103.0	145.6	5.978	6.236	0.550	965.4	108	11.35	0.015	1.1	70.2	10.0
	230.0	114.1	138.5	5.929	6.145	0.523	960.2	222	13.40	0.035	2.7	70.4	10.0
	230.0	121.1	134.9	5.862	6.049	0.508	953.4	317	14.73	0.056	4.4	70.7	10.0
	230.0	130.6	130.2	5.792	5.940	0.489	947.8	404	17.15	0.083	6.5	71.1	10.0
	230.0	139.9	127.9	5.712	5.819	0.481	943.1	479	19.30	0.110	8.7	71.8	10.0
	230.0	149.2	128.6	5.595	5.658	0.484	938.5	554	22.07	0.146	11.6	72.9	10.0
	230.0	159.0	130.8	5.451	5.468	0.492	929.2	624	25.36	0.188	15.1	74.1	10.0
	230.0	169.5	134.0	5.287	5.253	0.504	917.1	686	28.52	0.233	19.0	75.4	10.0
	230.0	180.3	138.8	5.108	5.024	0.522	900.3	743	31.38	0.278	23.0	76.6	10.0
	230.0	191.4	144.8	4.918	4.780	0.544	881.1	794	33.88	0.320	27.1	77.9	10.0
	230.0	203.0	152.1	4.715	4.530	0.573	859.9	838	35.97	0.359	31.1	79.3	10.0
	230.0	214.7	161.2	4.510	4.262	0.606	836.4	879	37.49	0.392	35.0	80.6	10.0
	230.0	226.3	171.2	4.285	3.983	0.644	805.6	917	38.74	0.423	39.2	81.7	10.0
	230.0	238.0	182.4	4.059	3.704	0.687	773.3	950	39.63	0.448	43.2	82.8	10.0
	230.0	249.9	194.1	3.822	3.414	0.732	737.3	979	39.50	0.461	46.6	83.9	10.0
	230.0	261.2	206.4	3.586	3.131	0.779	698.4	1006	39.30	0.471	50.3	84.7	10.0
	230.0	272.2	218.6	3.360	2.862	0.826	659.8	1030	38.28	0.469	53.1	85.4	10.0
	230.0	283.1	231.1	3.131	2.594	0.874	618.7	1051	36.94	0.462	55.7	85.9	10.0
	230.0	294.0	243.9	2.908	2.339	0.923	577.2	1070	35.33	0.450	58.2	86.3	10.0
	230.0	304.4	256.8	2.695	2.102	0.971	534.4	1088	33.30	0.431	60.2	86.2	10.0
	230.0	315.5	270.5	2.492	1.884	1.023	492.8	1105	30.90	0.406	61.5	86.0	10.0
28.2 OZ-FT	230.0	326.5	285.0	2.294	1.691	1.076	450.1	1120	28.20	0.376	62.3	85.3	10.0
	230.0	326.8	285.4	2.288	1.686	1.078	448.7	1120	28.10	0.375	62.3	85.3	10.0
	230.0	337.2	300.9	2.099	1.528	1.134	406.4	1134	25.01	0.338	62.0	84.2	10.0
24.6 OZ-FT	230.0	338.5	303.0	2.077	1.511	1.142	401.2	1136	24.60	0.333	61.9	84.0	10.0
0.333 HP	230.0	338.4	302.9	2.078	1.512	1.141	401.5	1136	24.63	0.333	61.9	84.0	10.0
1140 RPM	230.0	341.8	308.6	2.021	1.475	1.161	388.3	1140	23.53	0.319	61.4	83.5	10.0
	230.0	345.8	316.7	1.920	1.421	1.191	365.0	1146	21.63	0.295	60.3	82.7	10.0
	230.0	351.5	328.4	1.747	1.366	1.234	321.7	1158	17.80	0.245	56.9	80.1	10.0
	230.0	356.6	339.4	1.589	1.372	1.276	277.4	1169	13.64	0.190	51.0	75.9	10.0
	230.0	360.5	350.0	1.461	1.431	1.316	235.3	1179	9.57	0.134	42.6	70.0	10.0
	230.0	364.4	362.1	1.350	1.562	1.362	188.7	1190	4.63	0.066	25.9	60.8	10.0
	230.0	365.7	371.5	1.296	1.721	1.395	148.6	1199	0.10	0.001	0.7	49.9	10.0
	230.0	365.8	371.6	1.294	1.737	1.398	145.3	1200	0.00	0.000	0.0	48.8	10.0

DRAWING NO. PAGE 5 of 8

1YBA4BG

REV.

-

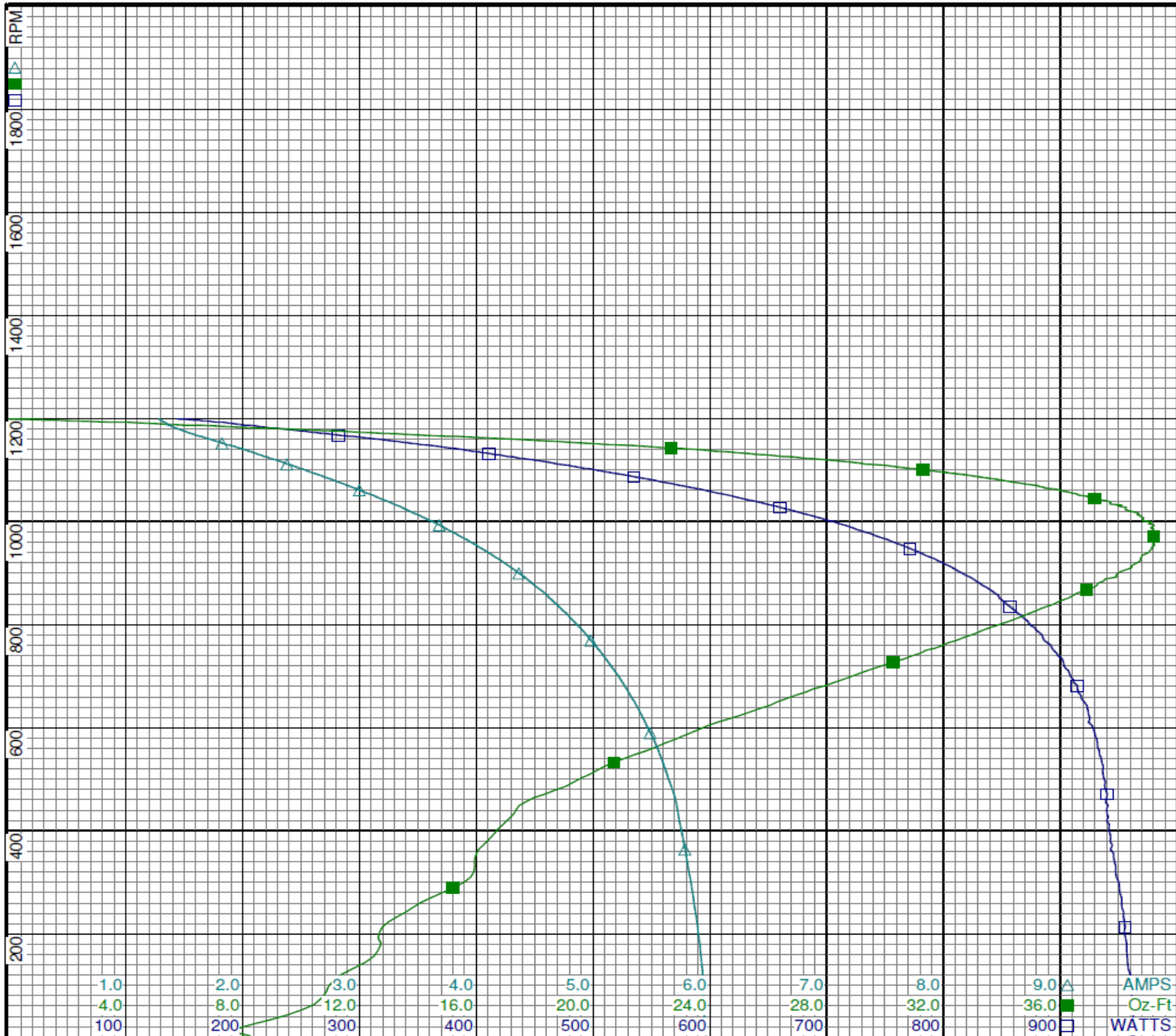
Dayton Electric Mfg. Co. Lake Forest, IL 60045 USA

## Performance Data



**1YBA4BG**

REV.

**Dayton**

### Curve Descriptions:

Motor(1) Test 2 Start 230V 60 Hz 6P  
10ufd Run

- SPEED vs WATTS
- SPEED vs TORQUE
- △ SPEED vs ILine

### Motor Ratings:

K055LKY226901 1YBA4BG

DRAWING NO. PAGE 6 of 8

**1YBA4BG**

REV. 1

1

**Dayton Electric Mfg. Co. Lake Forest, IL 60045 USA**



# Performance Data



1YBA4BG

REV.  
-

## Dayton Manufacturing Company

### Motor Description

Model: K055LK226901 1YBA4BG  
Motor ID: 1  
Poles: 6  
Volts: 115/230  
Frequency: 60  
HP: 1/3  
Speed: 1100  
Phase: 1  
Protector:

### Test Conditions

Test Type: Run  
Test Number: 4  
Poles: 6  
Volts: 230  
Hz: 60  
Rotation:  
Special Cond:  
Speed Conn:  
TestBoard: Aamps Performance Fixture #4  
Run Cap: 10  
Start Cap: 0µfd  
Environment:  
Tested: 7/6/2010 3:19:14 PM  
Tested By: Sharp, Gerald  
Gear Ratio: 1:1  
Bearing Friction: -0.42 Oz-Ft  
Windage Torque: -2.14 Oz-Ft

Special Points	Vline (V)	Vaux (V)	Vcap (V)	Iline (A)	Imain (A)	Iaux (A)	Watts	RPM	Tq (Oz-ft)	HP	Eff (%)	PF (%)	Cap
	230.0	366.1	359.5	1.009	1.709	2.013	174.2	1189	0.00	0.000	0.0	75.1	14.9
	230.0	365.7	355.6	1.103	1.578	1.990	204.0	1183	2.89	0.041	14.9	80.4	14.8
	230.0	364.6	349.3	1.230	1.429	1.955	239.0	1174	6.84	0.096	29.9	84.5	14.8
	230.0	362.6	342.1	1.352	1.310	1.915	270.1	1167	10.27	0.143	39.4	86.9	14.8
	230.0	358.2	331.0	1.509	1.185	1.854	308.7	1156	14.45	0.199	48.1	88.9	14.9
	230.0	351.6	319.1	1.671	1.117	1.789	345.7	1146	18.36	0.251	54.1	90.0	14.9
	230.0	343.4	306.6	1.848	1.117	1.719	385.4	1133	22.42	0.303	58.6	90.7	14.9
0.333 HP	230.0	338.1	298.7	1.966	1.156	1.676	411.3	1125	24.89	0.333	60.4	91.0	14.9
25.5 OZ-FT	230.0	336.0	296.8	1.998	1.172	1.661	417.4	1122	25.50	0.341	60.9	90.8	14.8
	230.0	334.4	293.7	2.045	1.195	1.647	428.4	1119	26.48	0.353	61.4	91.1	14.9
29.3 OZ-FT	230.0	327.8	284.5	2.194	1.300	1.597	460.0	1107	29.30	0.386	62.6	91.1	14.9
	230.0	325.2	281.3	2.251	1.346	1.579	471.0	1103	30.22	0.397	62.8	91.0	14.9
1100 RPM	230.0	323.9	279.6	2.283	1.373	1.569	478.1	1100	30.84	0.404	63.0	91.0	14.9
	230.0	316.0	269.3	2.471	1.544	1.513	517.1	1085	33.84	0.437	63.0	91.0	14.9
	230.0	306.1	257.1	2.701	1.786	1.444	563.3	1066	37.34	0.474	62.7	90.7	14.9
	230.0	295.1	243.8	2.952	2.074	1.370	612.4	1045	40.56	0.504	61.4	90.2	14.9
	230.0	283.3	230.2	3.220	2.395	1.295	663.1	1020	43.26	0.525	59.1	89.5	14.9
	230.0	270.7	216.5	3.512	2.754	1.218	716.8	989	45.92	0.541	56.3	88.7	14.9
	230.0	260.1	205.8	3.759	3.067	1.162	758.9	962	46.99	0.538	52.9	87.8	15.0
	230.0	249.2	194.6	4.017	3.394	1.099	802.4	931	47.98	0.532	49.4	86.8	15.0
	230.0	237.9	183.8	4.274	3.724	1.038	843.1	896	48.26	0.515	45.6	85.8	15.0
BDT OZ-FT	230.0	236.7	182.5	4.304	3.763	1.031	848.0	892	48.29	0.513	45.1	85.7	15.0
	230.0	226.2	173.0	4.541	4.073	0.978	883.2	856	47.90	0.488	41.2	84.6	15.0
	230.0	214.9	163.8	4.779	4.392	0.927	915.1	814	46.85	0.454	37.0	83.3	15.0
	230.0	204.0	155.9	5.001	4.690	0.882	944.5	770	45.12	0.413	32.7	82.1	15.0
	230.0	193.7	149.0	5.208	4.969	0.844	969.9	723	43.09	0.371	28.5	81.0	15.0
	230.0	183.6	143.5	5.393	5.224	0.813	990.6	675	40.44	0.325	24.5	79.9	15.0
	230.0	174.2	139.0	5.560	5.458	0.789	1008.6	623	37.67	0.280	20.7	78.9	15.1
	230.0	164.8	135.4	5.713	5.678	0.770	1023.4	569	34.42	0.233	17.0	77.9	15.1
	230.0	156.2	132.8	5.839	5.866	0.754	1031.3	513	31.25	0.191	13.8	76.8	15.1
	230.0	147.8	132.0	5.943	6.027	0.747	1038.8	455	28.96	0.157	11.3	76.0	15.0
	230.0	141.6	131.6	5.999	6.124	0.744	1040.7	400	27.73	0.132	9.5	75.4	15.0
	230.0	135.0	133.6	6.047	6.208	0.755	1047.6	344	27.29	0.112	8.0	75.3	15.0
	230.0	127.7	137.1	6.112	6.312	0.775	1059.0	281	26.22	0.088	6.2	75.3	15.0
	230.0	120.6	138.7	6.185	6.430	0.786	1069.1	207	23.60	0.058	4.1	75.2	15.0
	230.0	113.1	141.5	6.234	6.522	0.803	1076.3	133	20.95	0.033	2.3	75.1	15.1

DRAWING NO. PAGE 7 of 8  
1YBA4BG

REV.  
-

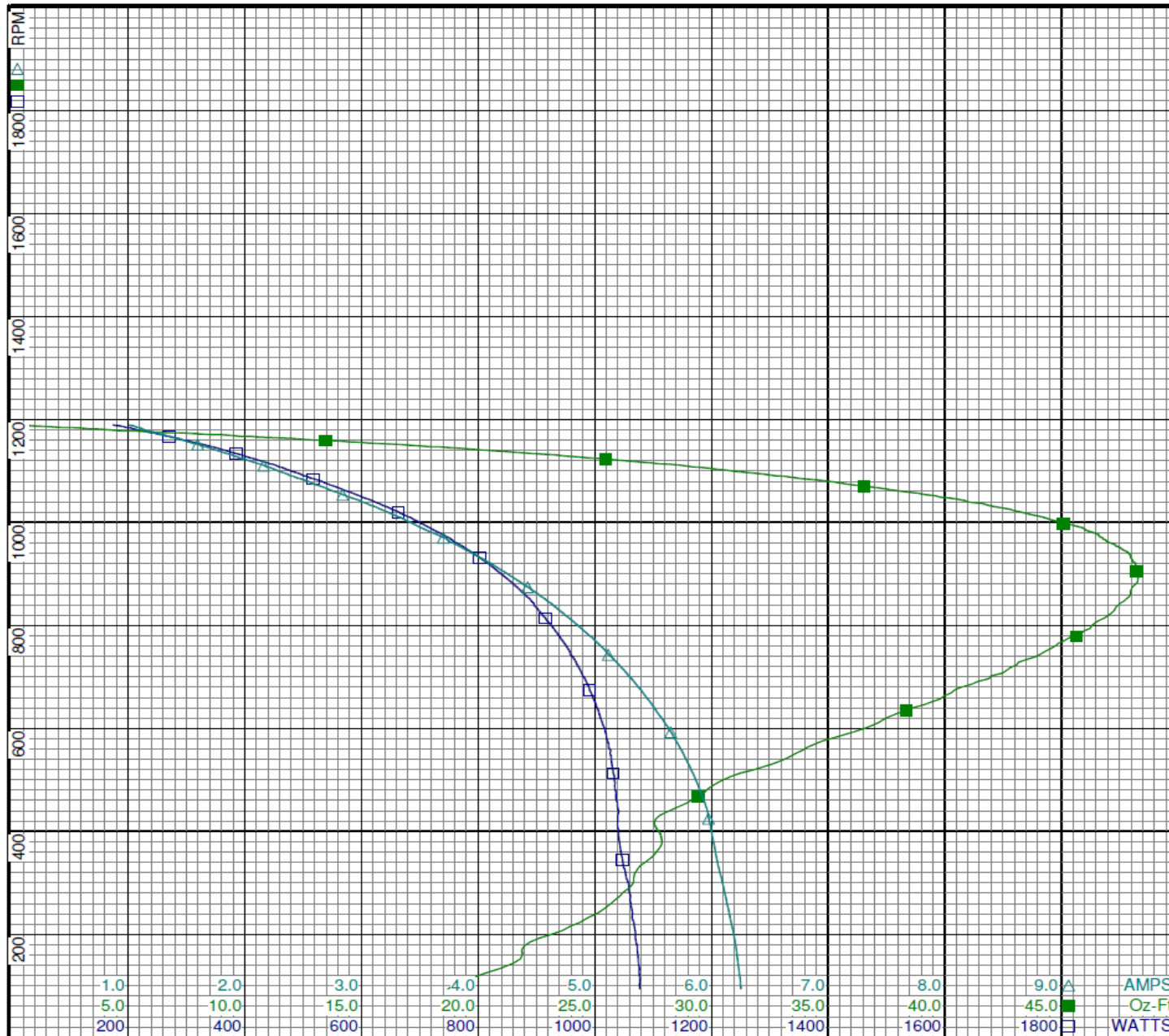
Dayton Electric Mfg. Co. Lake Forest, IL 60045 USA

## Performance Data



**1YBA4BG**

REV.

**Dayton**

### Curve Descriptions:

Motor(1) Test 4 Run 230V 60 Hz 6P

- SPEED vs WATTS
- SPEED vs TORQUE
- △ SPEED vs ILine

Motor Ratings:

K055LKY226901 1YBA4BG

AMPS  
Oz-Ft  
WATTS

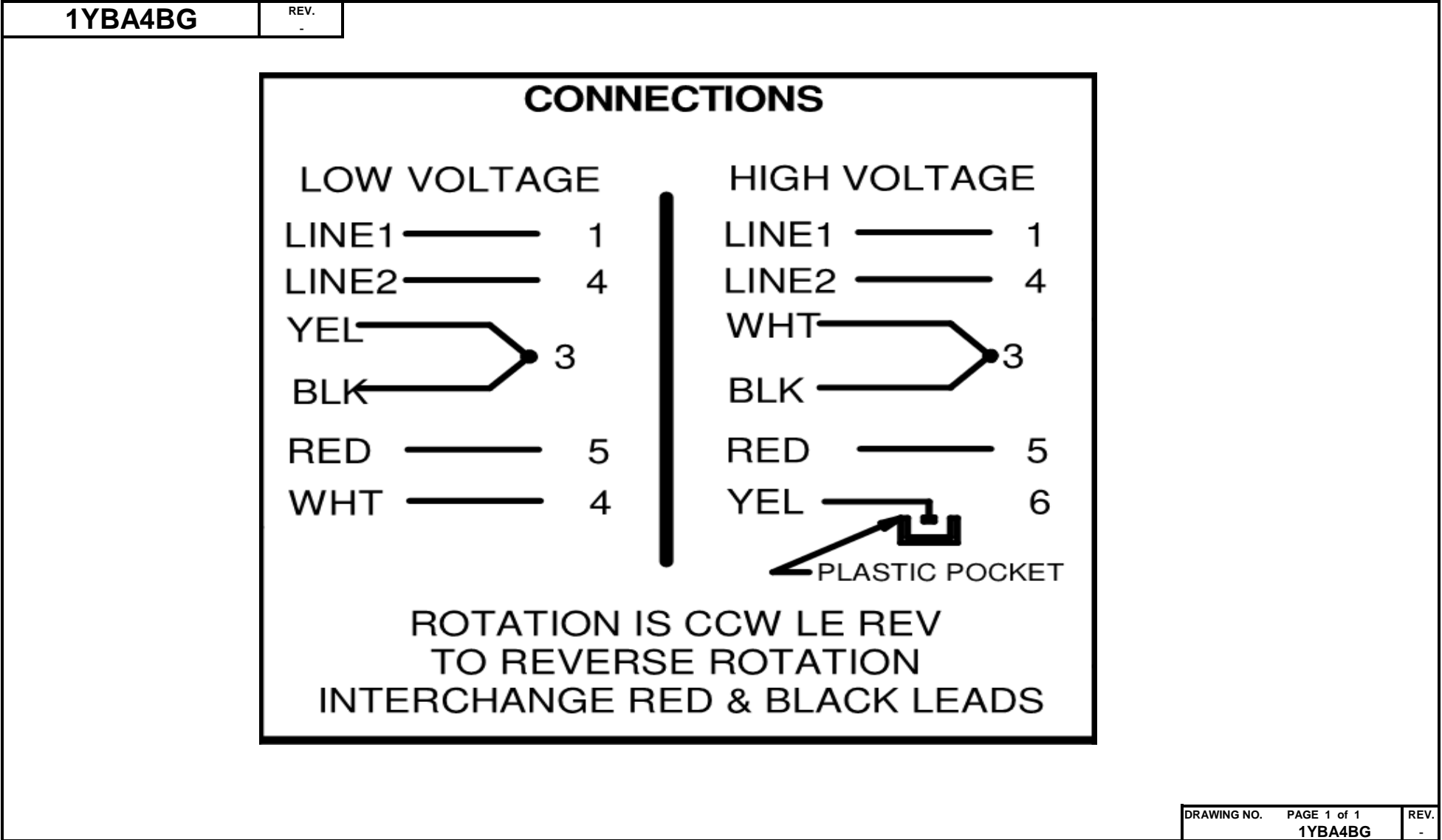
**DRAWING NO.    PAGE 8 of 8**

**1YBA4BG**

REV.

1

**Dayton Electric Mfg. Co. Lake Forest, IL 60045 USA**





**Dayton**®**FARM DUTY MOTOR****HP:** 1/3  
**VOLTS:** 115/230**[BAR CODE]****Part No** 1YBA4BG**AMPS:** 3.9/1.9**PH:** 1**RPM:** 1100**HZ:** 60**DUTY:** CONT**FR:** 48Y**SF:** 1.0**INS CL:** B**KVA CODE:** D**AMB:** 40 °C**ENCL:** TEAO**SFA:** 3.9/1.9**THERMALLY PROTECTED:** AUTO**MFG. NO.** **PROT. CODE:** 7A010**AVG. F.L.  
EFF.****MTR REF:** K55HXLKY-2269**Disconnect Power Before Making Any  
Electrical Connections or Changes****CONNECTIONS****LOW VOLTAGE**

LINE1 — 1

LINE2 — 4

YEL — 3

BLK — 3

RED — 5

WHT — 4

**HIGH VOLTAGE**

LINE1 — 1

LINE2 — 4

WHT — 3

BLK — 3

RED — 5

YEL — 6



PLASTIC POCKET



E37403



258501

**ROTATION IS CCW LE REV  
TO REVERSE ROTATION  
INTERCHANGE RED & BLACK LEADS****Mfd for Dayton Electric Mfg. Co., Lake Forest, IL 60045 USA****Made in Mexico**