

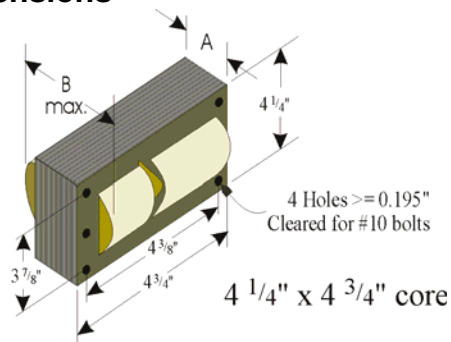


HID BALLAST KIT

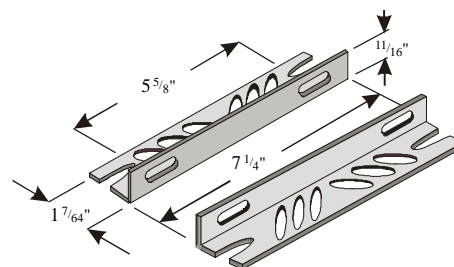


Model No:	1XUK5	(5MH750SC-PS)				CAPACITOR (Required)		
Input Voltage	120	208	240	277	480	Capacitance	28 μ F \pm 3%	
Operating Current	7.6	4.4	3.5	3.0	1.7	Case Max. Temperature	100°C	
Open Circuit Current	4.1	2.4	2.1	1.8		Minimum Volts	400V	
Lamp Starting Current						Dry	Diameter	1.75"
Lamp ACF	1.6	1.6	1.6	1.6	1.6		Height	3.65"
Recommended Fuse	20	20	10	10	5			
UL 1029 Bench Top Rise								
Input Power	802W							
Power Factor	\geq 90%							
Open Circuit Voltage	351 (330 – 390V)							
Short Circuit Current (Sec.)	4.0 ~ 6.1A					Ignitor (Required)		
Insulation System	Class H, 180° C					Ignitor Model	MHR2	
Ballast Dimension	A	2.8"				Pulse Height (kV)	3.0 ~ 4.0	
	B	4.8"				Pulse Width (\geq μ s)	1.5	
Ballast Net Weight	21.0lbs.					Min. Starting Temp.	-20° F / -30° C	
Leads	12"-Cross Link Polyolefin					Regulation	Industry Standard	
Ballast Type	Metal Halide					Circuit Type	Super CWA	
Lamp Watts / Type	750 Watts / Type M149					Input Frequency	60 Hz	

Dimensions



Bracket Kit





HID BALLAST KIT

LumaPro™ 1XUK5
5MH750SC-PS



1 1XUK5

Mfg. for Grainger International Inc.
Lake Forest, IL 60045
Made in China

Metal Halide-Pulse Start 750W

5Tap -60HZ. 120V/208V/240V/277V/480V

Current Ratings: 7.0A/4.4A/3.5A/3.0A/1.7A

For: 1-750Watt M149MHLamp

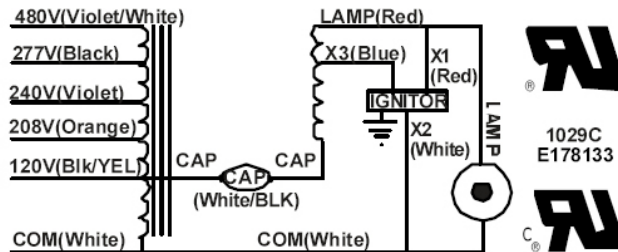
O.C.V.-390V HIGHPOWERFACTOR

CAP: 28mfd400VRDIS: max2.10megohms

CLASSH,180CINSULATIONSYSTEM-1029C

CONSTANTWATTAGE AUTOTRANSFORMER

Install in Accordance with National and Local
Electrical Codes



Ground Ballast Core and Metallic Capacitor Case

FIXTURE TEST DATA: INPUT CURRENT

<u>VOLTAGE</u>	<u>OPEN CIRCUIT</u>	<u>SHORT CIRCUIT</u>
120V	2.0-6.1A	2.0-6.0A
208V	1.2-3.6A	1.2-3.5A
240V	1.0-3.1A	1.0-3.1A
277V	0.9-2.7A	0.9-2.6A
480V		

OCV: 310-430V

SHORT CKT SEC.: 4.0-6.1A