

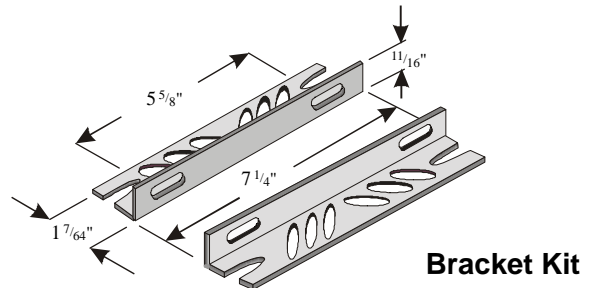
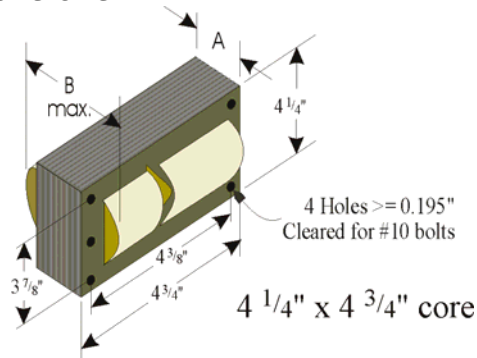


HID BALLAST KIT



Model No:	1XUE4	Capacitance	24 μ F \pm 3%	
Input Voltage	120/208/240/277/480V	Minimum Volts	400V	
Frequency	60Hz	Dry	Diameter	1.77"
Circuit Type	CWA		Height	4.61"
Input Power	440W			
Power Factor	\geq 90%			
Operating Current	4.2/2.4/2.1/1.8/1.1 A			
Open Circuit Voltage	300	Case Max. Temperature	105°C	
Short Circuit Current (Sec.)	3.50 - 4.30 A	Ignitor	-	
Recommended Fuse	10/7/5/5/4A	ANSI Code	M-59 / H-33	
Insulation System	Class H, 180°C	Min. Starting Temp.	-20°F / -30°C	
A	2.20"	Weight	12.5 lbs.	
B	4.00"	Leads	12"-Cross Link Polyolefin	
UL 1029 Bench Top Rise Code	A/A/A/A/A	Regulation	\pm 5% Input Volts ~ \pm 5% Nom. Lamp Watts	
Ballast Type	Metal Halide / Mercury	Watts	400W	

Dimensions





HID BALLAST KIT



1XUE4
5MH/MV400SC



1 1 XUE4

Mfg. for Grainger International Inc.
Lake Forest, IL 60045
Made in China

Metal Halide-Mercury Vapor 400W

5Tap: - 60Hz. 120V/208V/240V/277V/480V

Current Ratings: 3.7A/2.1A/1.9A/1.6A/0.9A

For: 1-400Watt M-59MHL Lamp or H-33MVL Lamp

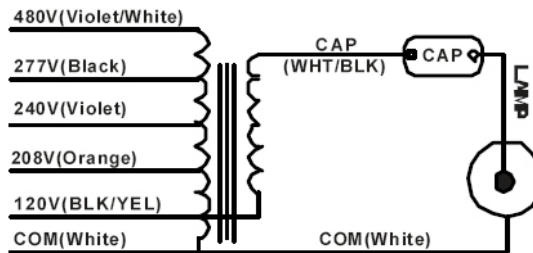
O.C.V. - 300V HIGH POWER FACTOR

CAP: 24mfd 400V RDIS: max 2.10 megohms

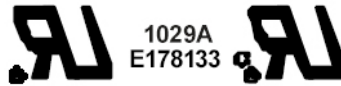
CLASSH, 180°C INSULATION SYSTEM - 1029A

CONSTANT WATTAGE AUTO TRANSFORMER

Install in Accordance with National and Local
Electrical Codes



Ground Ballast Core and Metallic Capacitor Case



FIXTURE TEST DATA: INPUT CURRENT

VOLTAGE	OPEN CIRCUIT	SHORT CIRCUIT
120V	1.8-5.5A	1.1-3.3A
208V	1.1-3.2A	0.7-2.0A
240V	0.9-2.8A	0.6-1.7A
277V	0.8-2.5A	0.5-1.5A
480V	0.5-1.4A	0.3-0.9A

OCV: 280-330V

SHORT CKT SEC.: 3.2-5.0A