

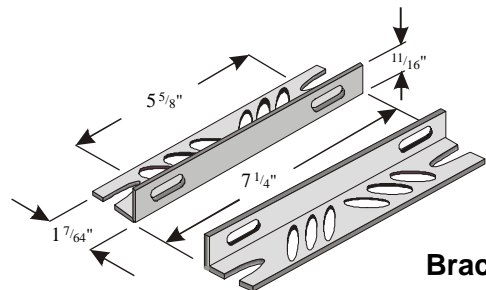
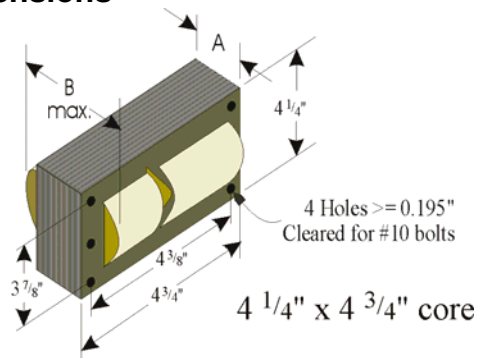


HID BALLAST KIT



Model No:	1XUE2	Capacitance	15 μ F \pm 3%	
Input Voltage	120/208/240/277/480V	Minimum Volts	400V	
Frequency	60Hz	Dry	Diameter	1.77"
Circuit Type	CWA		Height	4.61"
Input Power	285W			
Power Factor	\geq 90%			
Operating Current	2.7/1.6/1.3/1.2/0.6 A			
Open Circuit Voltage	300	Case Max. Temperature	105°C	
Short Circuit Current (Sec.)	2.25 - 2.75 A	Ignitor	-	
Recommended Fuse	8/5/5/3/2A			
Insulation System	Class H, 180°C	Min. Starting Temp.	-20°F / -30°C	
A	1.7"	Weight	10.0 lbs.	
B	3.2"	Leads	12"-Cross Link Polyolefin	
UL 1029 Bench Top Rise Code	A/A/A/A/A	Regulation	\pm 5% Input Volts ~ \pm 5% Nom. Lamp Watts	
Ballast Type	Metal Halide / Mercury	ANSI Code	M-58 / H-37	
Watts	250W	Circuit Type	CWA	

Dimensions



Bracket Kit



HID BALLAST KIT



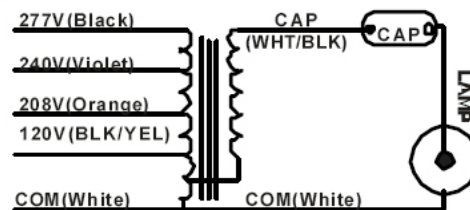
1XUE2
5MH/MV250SC



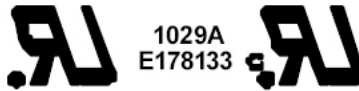
1 1 XUE2

Mfg. for Grainger International Inc.
Lake Forest, IL 60045
Made in China

Metal Halide-Mercury Vapor 250W
Quad Tap 60Hz. 120V/208V/240V/277V
Current Ratings: 2.7A/1.6A/1.3A/1.2A
 For: 1-250Watt M-58MHLamp
 or H-37MVLamp
 O.C.V.-310V HIGH POWER FACTOR
 CAP: 15mfd 400V
 RDIS: max 1.50 megohms
 CLASSH, 180°C INSULATION
 SYSTEM-1029A
 Constant Wattage Autotransformer
 Install in Accordance with National
 Electrical Codes



Ground Ballast Core and Metallic Capacitor Case



FIXTURE TEST DATA: INPUT CURRENT

<u>VOLTAGE</u>	<u>OPEN CIRCUIT</u>	<u>SHORT CIRCUIT</u>
120V	0.8-2.3A	1.1-3.2A
208V	0.5-1.4A	0.7-2.0A
240V	0.4-1.2A	0.6-1.7A
277V	0.3-1.0A	0.5-1.4A

OCV: 270-340V

SHORT CKT SEC.: 2.1-3.5A