

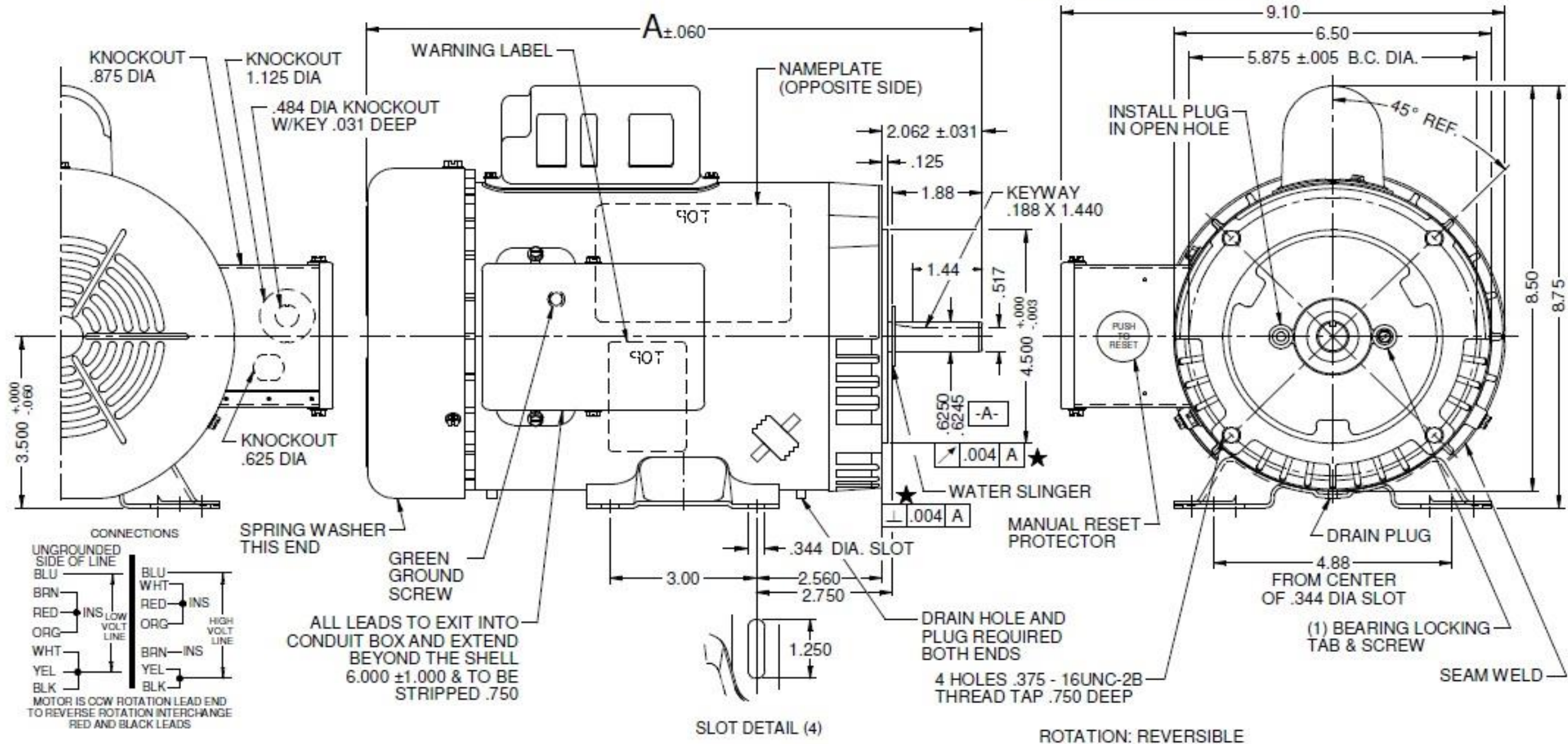
# Dimensional Drawing

**1TMW3BG**

REV.  
-

VAR	MODEL	CUST. PT. NO.	A	B	C	D	HP	VOLTS	SF	AMPS	HZ	RPM	CONN VOLTS	PROT.	DESCRIPTION / REMARKS
001	C63KXHDJ-1323	1TMW3BG	10.88	---	---	---	1/3	115/230	1.15	6.6/3.3	60	1725	---	MANUAL	56C, TEFC, GREEN, REMOVABLE BASE

SHAFT KEY TAPED TO MOTOR



DRAWING NO.	PAGE 1 of 1	REV.
1TMW3BG		-

# Performance Data



**1TMW3BG**

REV.  
-

## MOTOR PERFORMANCE

HP:	1/3						
Poles:	4						
No. of Speeds:	1						
Volts:	115/230	115	230				
HZ:	60	60	60				
Service Factor:	1.15						
Efficiency:	@ Rated Load	56.8	57.7				
Power Factor:	@ Rated Load	58.4	58.0				
Amps:	@ No Load						
	@ Rated Load	6.57	3.25				
	@ Service Factor	6.92	3.42				
	@ Locked Rotor	27.6	14.2				
RPM:	@ Rated Load	1749	1749				
Ambient (°C):	40						
Altitude (FASL):							
Torques:	Breakdown	47.45	47.45				
	Locked Rotor	58.9	53.3				
	Pull-Up	57.6	52.1				
	Rated Load	16.01	16.01				
	Service Factor	18.7	18.7				
Watts:	Rated Load	439	432				
KVA Code:	L	L	L				
Temperature Rise:	@ Rated Load	56.1	54.1				
	@ Service Factor	61.2	59.3				
Thermal Protector:	Trip Temp (°C)	110.3	114.6				
Winding Material:	Start (Auxiliary)	Cu	Cu				
	Run (Main)	Cu	Cu				
Capacitor(s):	Start (MFD / Volts)	198.45					
	No. of Start Capacitors						
	Run (MFD / Volts)						
	No. of Run Capacitors						

### LOW SPEED PERFORMANCE DATA:

HP:							
Poles:							
Volts:							
HZ:							
Efficiency:	@ Rated Load						
Power Factor:	@ Rated Load						
Amps:	@ No Load						
	@ Rated Load						
	@ Service Factor						
	@ Locked Rotor						
Torques:	Bead Down						
	Locked Rotor						
	Pull-Up						
	Rated Load						
	Service Factor						
Watts:	@ Rated Load						
Temperature Rise:	@ Rated Load						
	@ Service Factor						

DRAWING NO. PAGE 1 of 1 REV.  
1TMW3BG -

# Performance Data



**1TMW3BG**

REV.

-

## Dayton Manufacturing Company

### Motor Description

Model: C063HDJ132301 1TMW3BG  
 Motor ID: 1, Double Fin  
 Poles: 4  
 Volts: 115/230  
 Frequency: 60  
 HP: .33  
 Speed: 1725  
 Phase: 1  
 Protector: MED4798

### Test Conditions

Test Type: Start  
 Test Number: 1  
 Poles: 4  
 Volts: 115  
 Hz: 60  
 Rotation:  
 Special Cond:  
 Speed Conn:  
 TestBoard: Amtps Performance Fixture #3  
 Run Cap: 0  
 Start Cap: 208 µfd  
 Environment:  
 Tested: 5/3/2010 2:02:01 PM  
 Tested By: Sharp, Gerald  
 Gear Ratio: 1:1  
 Bearing Friction: -1.03 Oz-Ft  
 Windage Torque: -2.73 Oz-Ft

Special Points	Vline (V)	Vaux (V)	Vcap (V)	Iline (A)	Imain (A)	Iaux (A)	Watts	RPM	Tq (Oz-ft)	HP	Eff (%)	PF (%)	Cap
PUT OZ-FT	115.0	94.3	137.6	27.66	25.68	10.368	2887	6	58.92	0.004	0.1	90.8	199.9
	<b>115.0</b>	<b>94.3</b>	<b>137.6</b>	<b>27.64</b>	<b>25.67</b>	<b>10.368</b>	<b>2887</b>	<b>5</b>	<b>57.62</b>	<b>0.003</b>	<b>0.1</b>	<b>90.8</b>	<b>199.9</b>
	115.0	94.2	137.2	27.65	25.63	10.330	2882	26	58.74	0.019	0.5	90.6	199.7
	115.0	95.7	135.0	27.60	25.35	10.160	2884	157	60.67	0.113	2.9	90.9	199.6
	115.0	97.5	132.4	27.49	24.93	9.967	2880	301	64.47	0.231	6.0	91.1	199.7
	115.0	99.5	129.9	27.37	24.50	9.761	2873	436	68.04	0.353	9.2	91.3	199.4
	115.0	101.5	126.7	27.20	24.05	9.512	2858	555	71.38	0.472	12.3	91.4	199.2
	115.0	104.6	124.0	27.19	23.64	9.295	2864	665	74.79	0.592	15.4	91.6	198.9
	115.0	108.9	122.3	27.23	23.15	9.195	2888	766	79.16	0.722	18.7	92.2	199.4
	115.0	113.3	121.4	27.18	22.60	9.098	2902	860	83.76	0.858	22.0	92.8	198.9
	115.0	117.5	120.0	27.09	22.01	9.002	2910	946	87.46	0.985	25.3	93.4	199.1
	115.0	122.2	119.0	26.96	21.40	8.930	2916	1025	90.73	1.107	28.3	94.1	199.1
	115.0	127.5	118.5	26.87	20.79	8.883	2921	1099	93.80	1.227	31.3	94.5	198.9
	115.0	132.8	118.4	26.76	20.16	8.873	2925	1166	96.51	1.340	34.2	95.0	198.8
	115.0	139.0	118.9	26.66	19.53	8.913	2932	1228	98.38	1.439	36.6	95.6	198.9
	115.0	145.1	119.8	26.56	18.89	8.995	2936	1285	100.02	1.530	38.9	96.1	199.2
	115.0	151.7	121.6	26.46	18.26	9.138	2939	1337	100.61	1.602	40.7	96.6	199.4
	115.0	159.0	124.3	26.36	17.63	9.345	2945	1385	100.41	1.656	42.0	97.1	199.4
	115.0	166.2	127.4	26.26	17.01	9.605	2950	1429	99.72	1.696	42.9	97.7	199.9
	115.0	173.7	131.9	26.17	16.38	9.945	2951	1470	98.17	1.717	43.4	98.1	200.1
	115.0	180.8	136.5	25.99	15.69	10.308	2936	1508	95.29	1.711	43.5	98.2	200.3
	115.0	188.1	141.4	25.82	15.06	10.727	2931	1542	91.96	1.688	43.0	98.7	201.2
	115.0	195.0	146.5	25.55	14.35	11.158	2910	1573	87.29	1.634	41.9	99.1	202.1
	115.0	200.6	151.1	25.18	13.63	11.558	2874	1600	81.84	1.559	40.5	99.2	202.8
	115.0	205.5	155.8	24.65	12.75	11.956	2817	1628	74.13	1.436	38.0	99.4	203.5
	115.0	210.7	161.5	24.15	11.87	12.427	2765	1652	66.63	1.310	35.3	99.6	204.1
	115.0	216.1	167.2	23.62	10.96	12.938	2713	1674	58.93	1.175	32.3	99.9	205.2
	115.0	221.4	173.6	23.10	10.03	13.488	2653	1697	49.84	1.007	28.3	99.9	206.1
	115.0	226.8	180.2	22.60	9.16	14.045	2595	1715	40.82	0.834	24.0	99.8	206.8
	115.0	231.3	186.0	22.00	8.16	14.585	2527	1734	31.57	0.652	19.2	99.9	208.0
	115.0	236.3	193.1	21.34	7.14	15.188	2446	1752	20.22	0.422	12.9	99.7	208.7
	115.0	240.4	199.4	20.61	6.08	15.765	2361	1771	8.40	0.177	5.6	99.6	209.8
	115.0	243.4	203.8	19.96	5.16	16.252	2284	1786	0.00	0.000	0.0	99.5	211.5

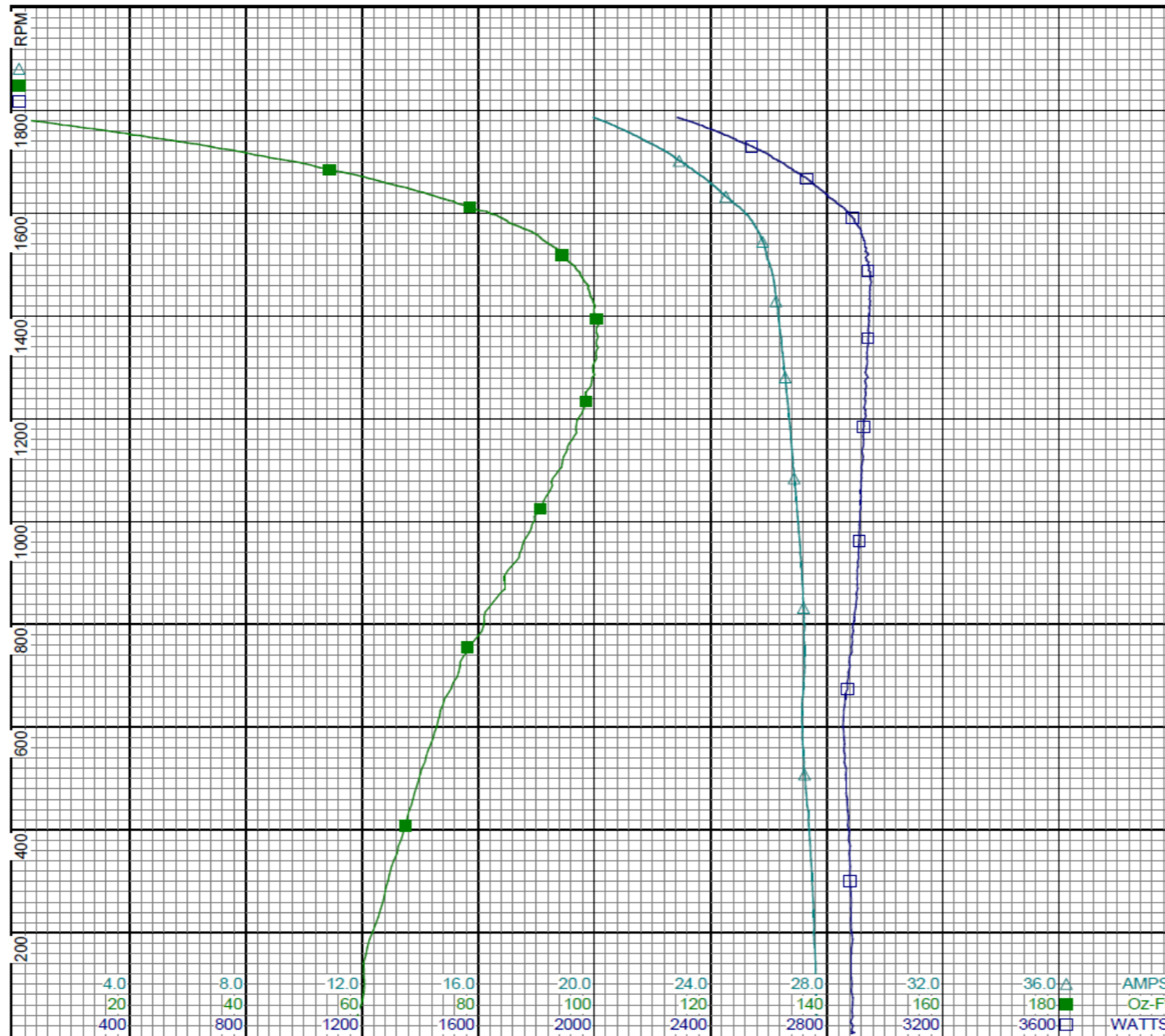
DRAWING NO. PAGE 1 of 8 REV.  
**1TMW3BG** -

# Performance Data



1TMW3BG

REV.  
-



Curve Descriptions:  
Motor(1) Test 1 Start 115V 60 Hz 4P

- SPEED vs WATTS
- SPEED vs TORQUE
- △ SPEED vs ILine

Motor Ratings:  
C063HDJ132301 1TMW3BG

DRAWING NO.	PAGE 2 of 8	REV.
1TMW3BG		-

Dayton Electric Mfg. Co. Lake Forest, IL 60045 USA

# Performance Data



**1TMW3BG**

REV.

-

## Dayton Manufacturing Company

### Motor Description

Model: C063HDJ132301 1TMW3BG  
 Motor ID: 1, Double Fin  
 Poles: 4  
 Volts: 115/230  
 Frequency: 60  
 HP: .33  
 Speed: 1725  
 Phase: 1  
 Protector: MED4798

### Test Conditions

Test Type: Run  
 Test Number: 6  
 Poles: 4  
 Volts: 115  
 Hz: 60  
 Rotation:  
 Special Cond:  
 Speed Conn:  
 TestBoard: Amps Performance Fixture #3  
 Run Cap: 0  
 Start Cap: 208 µfd  
 Environment:  
 Tested: 5/3/2010 2:01:06 PM  
 Tested By: Sharp, Gerald  
 Gear Ratio: 1:1  
 Bearing Friction: -1.01 Oz-Ft  
 Windage Torque: -2.99 Oz-Ft

Special Points	Vline (V)	Iline (A)	Watts	RPM	Tq (Oz-ft)	HP	Eff (%)	PF (%)
	115.0	5.61	155	1792	0.00	0.000	0.0	24.0
	115.0	5.88	293	1772	8.05	0.170	43.2	43.4
	115.0	6.51	429	1751	15.49	0.323	56.1	57.3
<b>0.333 HP</b>	<b>115.0</b>	<b>6.57</b>	<b>439</b>	<b>1749</b>	<b>16.01</b>	<b>0.333</b>	<b>56.6</b>	<b>58.1</b>
<b>16.2 OZ-FT</b>	<b>115.0</b>	<b>6.59</b>	<b>443</b>	<b>1748</b>	<b>16.20</b>	<b>0.337</b>	<b>56.8</b>	<b>58.4</b>
<b>18.7 OZ-FT</b>	<b>115.0</b>	<b>6.92</b>	<b>498</b>	<b>1740</b>	<b>18.70</b>	<b>0.387</b>	<b>58.0</b>	<b>62.6</b>
	115.0	7.25	551	1731	21.51	0.443	60.0	66.1
	115.0	8.18	678	1709	27.20	0.554	60.9	72.1
	115.0	9.10	792	1688	31.78	0.639	60.2	75.7
	115.0	10.09	906	1665	35.98	0.713	58.7	78.0
	115.0	11.09	1014	1640	39.68	0.775	57.0	79.5
	115.0	12.16	1122	1613	42.72	0.820	54.5	80.3
	115.0	13.25	1229	1583	44.62	0.841	51.1	80.7
	115.0	14.28	1326	1552	46.25	0.855	48.1	80.8
	115.0	15.35	1419	1516	47.13	0.851	44.7	80.3
	115.0	16.37	1505	1480	47.36	0.834	41.4	79.9
<b>BDT OZ-FT</b>	<b>115.0</b>	<b>16.47</b>	<b>1512</b>	<b>1476</b>	<b>47.45</b>	<b>0.834</b>	<b>41.1</b>	<b>79.8</b>
	115.0	17.38	1585	1438	46.65	0.799	37.6	79.3
	115.0	18.34	1657	1395	45.54	0.756	34.0	78.6
	115.0	19.24	1721	1345	43.84	0.702	30.4	77.8
	115.0	20.10	1777	1293	41.46	0.638	26.8	76.8
	115.0	20.92	1825	1236	38.72	0.570	23.3	75.9
	115.0	21.66	1866	1174	35.63	0.498	19.9	74.9
	115.0	22.34	1902	1107	32.04	0.422	16.6	74.0
	115.0	22.97	1932	1036	28.12	0.347	13.4	73.1
	115.0	23.55	1952	958	23.80	0.271	10.4	72.1
	115.0	24.08	1970	874	19.64	0.204	7.7	71.1
	115.0	24.52	1975	785	14.45	0.135	5.1	70.0
	115.0	24.85	1975	689	10.38	0.085	3.2	69.1
	115.0	24.94	1964	588	11.13	0.078	3.0	68.5
	115.0	25.01	1980	482	13.60	0.078	2.9	68.8
	115.0	25.26	2000	363	10.10	0.044	1.6	68.9
	115.0	25.47	2014	239	5.64	0.016	0.6	68.8
	115.0	25.59	2017	106	1.88	0.002	0.1	68.6

DRAWING NO. PAGE 3 of 8 REV.  
 1TMW3BG -

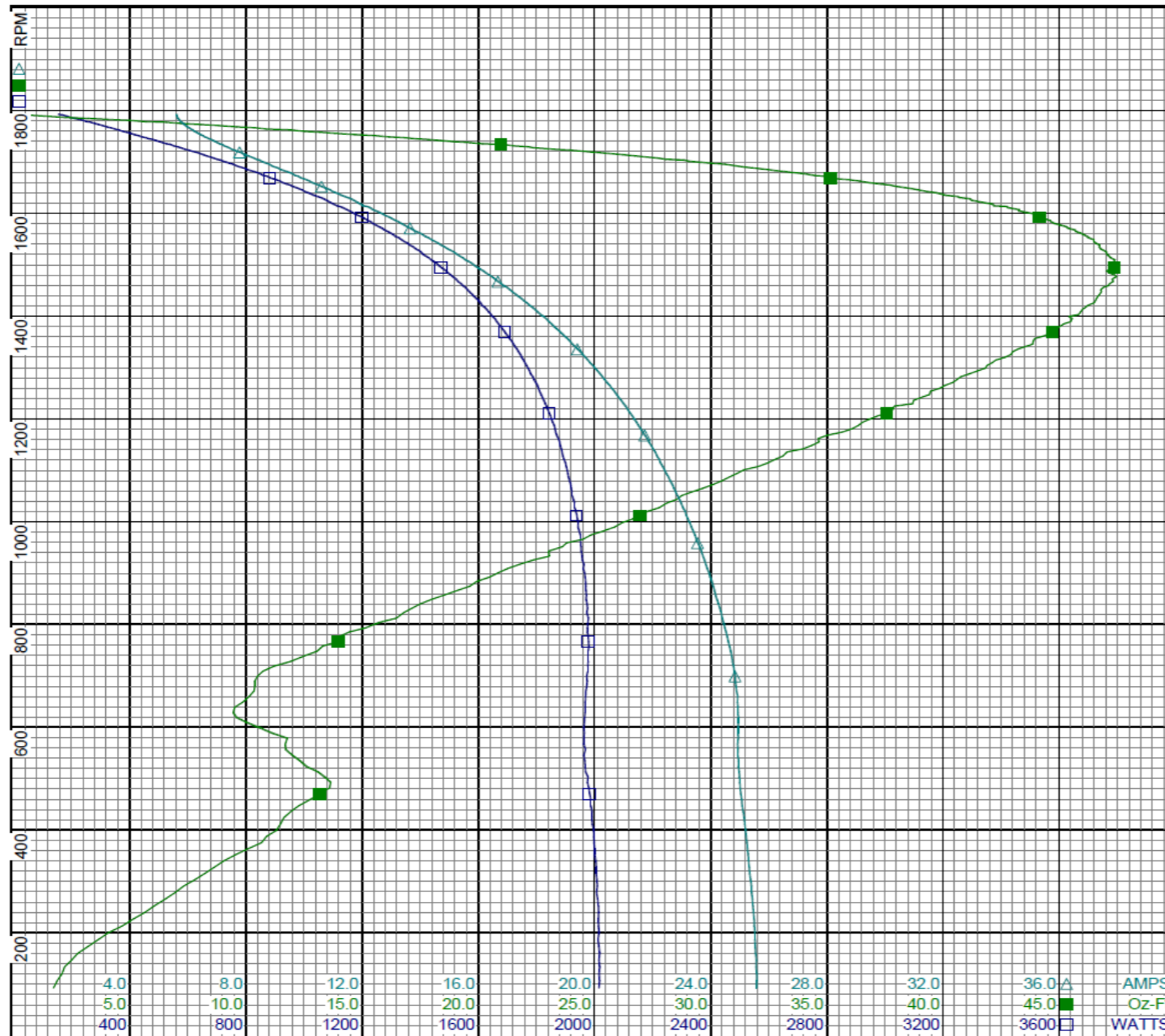
Dayton Electric Mfg. Co. Lake Forest, IL 60045 USA

# Performance Data



1TMW3BG

REV.  
-



Curve Descriptions:

Motor(1) Test 6 Run 115V 60 Hz 4P

- SPEED vs WATTS
- SPEED vs TORQUE
- △ SPEED vs ILine

Motor Ratings:

C063HDJ132301 1TMW3BG

AMPS  
Oz-Ft  
WATTS

DRAWING NO.	PAGE 4 of 8	REV.
1TMW3BG		-

Dayton Electric Mfg. Co. Lake Forest, IL 60045 USA

# Performance Data



**1TMW3BG**

REV.

-

## Dayton Manufacturing Company

### Motor Description

Model: C063HDJ132301 1TMW3BG  
 Motor ID: 1, Double Fin  
 Poles: 4  
 Volts: 115/230  
 Frequency: 60  
 HP: .33  
 Speed: 1725  
 Phase: 1  
 Protector: MED4798

### Test Conditions

Test Type: Start  
 Test Number: 3  
 Poles: 4  
 Volts: 230  
 Hz: 60  
 Rotation:  
 Special Cond:  
 Speed Conn:  
 TestBoard: Amtps Performance Fixture #3  
 Run Cap: 0  
 Start Cap: 208 µfd  
 Environment:  
 Tested: 5/3/2010 12:42:15 PM  
 Tested By: Sharp, Gerald  
 Gear Ratio: 1:1  
 Bearing Friction: -1.06 Oz-Ft  
 Windage Torque: -2.83 Oz-Ft

Special Points	Vline (V)	Vaux (V)	Vcap (V)	Iline (A)	Imain (A)	Iaux (A)	Watts	RPM	Tq (Oz-ft)	HP	Eff (%)	PF (%)	Cap
	230.0	175.5	124.1	14.214	13.442	9.320	2869	2	52.31	0.002	0.0	87.8	199.2
PUT OZ-FT	<b>230.0</b>	<b>175.6</b>	<b>124.3</b>	<b>14.216</b>	<b>13.438</b>	<b>9.320</b>	<b>2869</b>	<b>2</b>	<b>52.12</b>	<b>0.002</b>	<b>0.0</b>	<b>87.8</b>	<b>198.8</b>
	230.0	176.2	124.0	14.210	13.386	9.295	2870	25	53.43	0.016	0.4	87.8	198.9
	230.0	179.4	121.7	14.183	13.122	9.121	2866	157	55.38	0.104	2.7	87.9	198.8
	230.0	183.0	119.2	14.123	12.748	8.936	2859	301	58.91	0.211	5.5	88.0	198.9
	230.0	186.4	116.8	14.031	12.364	8.738	2844	435	62.30	0.323	8.5	88.1	198.5
	230.0	190.4	113.6	13.921	11.959	8.503	2830	556	65.34	0.433	11.4	88.4	198.5
	230.0	195.6	110.9	13.915	11.543	8.298	2834	666	68.10	0.540	14.2	88.6	198.4
	230.0	201.0	109.9	13.930	11.038	8.218	2858	766	72.03	0.657	17.1	89.2	198.3
	230.0	206.3	108.9	13.879	10.491	8.145	2872	859	75.74	0.775	20.1	90.0	198.3
	230.0	211.2	107.9	13.794	9.925	8.063	2872	946	79.55	0.896	23.3	90.5	198.2
	230.0	216.7	107.2	13.706	9.349	8.006	2875	1026	82.99	1.013	26.3	91.2	198.2
	230.0	222.2	106.8	13.604	8.744	7.970	2876	1098	85.74	1.121	29.1	91.9	198.0
	230.0	228.2	106.6	13.504	8.124	7.972	2874	1165	88.15	1.223	31.7	92.5	198.3
	230.0	234.5	107.1	13.396	7.472	8.014	2874	1228	89.83	1.313	34.1	93.3	198.5
	230.0	240.8	108.3	13.293	6.813	8.096	2868	1285	90.95	1.391	36.2	93.8	198.4
	230.0	247.3	109.8	13.184	6.146	8.230	2865	1338	92.08	1.467	38.2	94.5	198.9
	230.0	253.9	112.3	13.072	5.466	8.411	2857	1387	91.66	1.513	39.5	95.0	198.7
	230.0	260.7	115.1	12.959	4.804	8.649	2852	1430	90.95	1.548	40.5	95.7	199.2
	230.0	267.3	118.8	12.845	4.152	8.935	2842	1471	89.46	1.566	41.1	96.2	199.5
	230.0	273.8	123.1	12.719	3.523	9.268	2828	1508	87.23	1.566	41.3	96.7	199.6
	230.0	280.3	127.7	12.582	2.933	9.643	2812	1542	84.03	1.542	40.9	97.2	200.3
	230.0	286.4	133.0	12.428	2.403	10.055	2788	1573	80.24	1.502	40.2	97.5	200.5
	230.0	292.3	138.0	12.225	1.996	10.481	2756	1601	74.85	1.427	38.6	98.0	201.4
	230.0	294.9	140.8	11.874	1.752	10.716	2684	1628	67.32	1.305	36.3	98.3	201.8
	230.0	298.2	145.1	11.560	1.688	11.074	2623	1652	60.46	1.189	33.8	98.7	202.5
	230.0	302.7	150.7	11.314	1.956	11.544	2576	1674	53.23	1.061	30.7	99.0	203.2
	230.0	306.8	156.5	11.062	2.416	12.029	2522	1696	45.56	0.920	27.2	99.1	203.9
	230.0	310.7	162.2	10.807	2.976	12.509	2468	1715	37.60	0.768	23.2	99.3	204.6
	230.0	314.1	168.0	10.506	3.588	13.007	2400	1734	28.38	0.586	18.2	99.3	205.4
	230.0	317.6	173.8	10.176	4.300	13.524	2326	1754	18.34	0.383	12.3	99.4	206.4
	230.0	320.6	179.6	9.808	5.014	14.044	2247	1772	7.52	0.159	5.3	99.6	207.4
	230.0	321.9	183.5	9.525	5.558	14.398	2177	1785	0.00	0.000	0.0	99.4	208.1

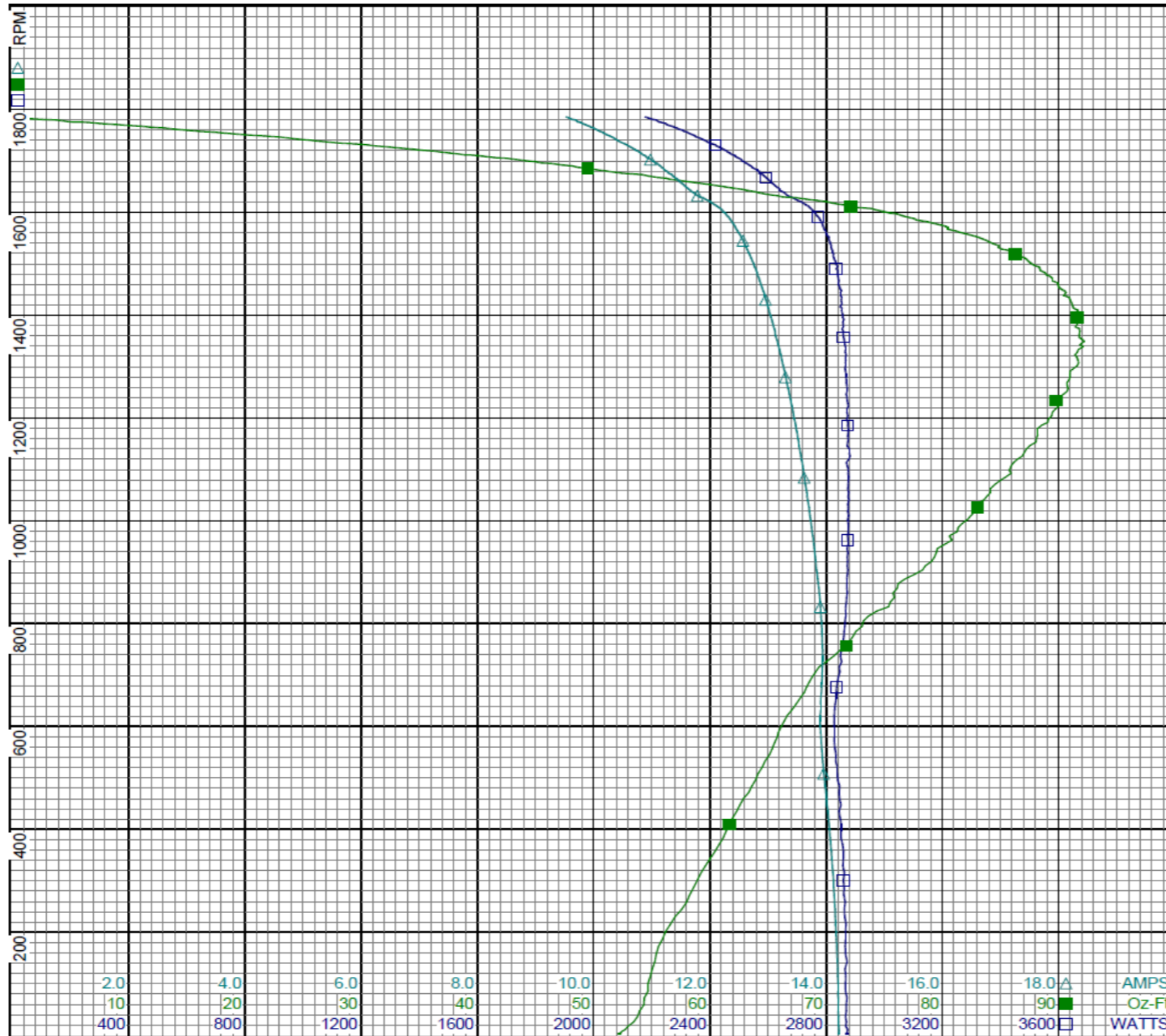
DRAWING NO. PAGE 5 of 8 REV.  
**1TMW3BG** -

# Performance Data



1TMW3BG

REV.  
-



**Curve Descriptions:**

Motor(1) Test 3 Start 230V 60 Hz 4P

- SPEED vs WATTS
- SPEED vs TORQUE
- △ SPEED vs ILine

**Motor Ratings:**

C063HDJ132301 1TMW3BG

DRAWING NO.	PAGE 6 of 8	REV.
1TMW3BG		-

Dayton Electric Mfg. Co. Lake Forest, IL 60045 USA



# Performance Data



**1TMW3BG**

REV.

-

## Dayton Manufacturing Company

### Motor Description

Model: C063HDJ132301 1TMW3BG  
 Motor ID: 1,Double Fin  
 Poles: 4  
 Volts: 115/230  
 Frequency: 60  
 HP: .33  
 Speed: 1725  
 Phase: 1  
 Protector: MED4798

### Test Conditions

Test Type: Run  
 Test Number: 7  
 Poles: 4  
 Volts: 230  
 Hz: 60  
 Rotation:  
 Special Cond:  
 Speed Conn:  
 TestBoard: Amtps Performance Fixture #3  
 Run Cap: 0  
 Start Cap: 208 µfd  
 Environment:  
 Tested: 5/3/2010 10:53:30 AM  
 Tested By: Sharp, Gerald  
 Gear Ratio: 1:1  
 Bearing Friction: -0.88 Oz-Ft  
 Windage Torque: -2.49 Oz-Ft

Special Points	Vline (V)	Iline (A)	Watts	RPM	Tq (Oz-ft)	HP	Eff (%)	PF (%)
	230.0	2.807	154	1791	0.00	0.000	0.0	23.8
	230.0	2.931	288	1771	8.04	0.170	44.0	42.7
	230.0	3.225	421	1751	15.35	0.320	56.7	56.7
<b>0.333 HP</b>	<b>230.0</b>	<b>3.259</b>	<b>432</b>	<b>1749</b>	<b>16.01</b>	<b>0.333</b>	<b>57.5</b>	<b>57.7</b>
<b>16.2 OZ-FT</b>	<b>230.0</b>	<b>3.269</b>	<b>436</b>	<b>1749</b>	<b>16.20</b>	<b>0.337</b>	<b>57.7</b>	<b>58.0</b>
<b>18.7 OZ-FT</b>	<b>230.0</b>	<b>3.421</b>	<b>487</b>	<b>1740</b>	<b>18.70</b>	<b>0.387</b>	<b>59.4</b>	<b>61.9</b>
	230.0	3.618	547	1730	21.50	0.443	60.4	65.7
	230.0	4.049	669	1708	27.15	0.552	61.6	71.8
	230.0	4.467	771	1688	31.45	0.632	61.2	75.0
	230.0	4.982	887	1664	35.86	0.710	59.7	77.4
	230.0	5.499	1001	1639	39.57	0.772	57.6	79.1
	230.0	6.005	1105	1612	42.35	0.813	54.9	80.0
	230.0	6.522	1207	1583	44.79	0.844	52.1	80.5
	230.0	7.061	1311	1551	46.28	0.854	48.6	80.7
	230.0	7.569	1398	1517	47.09	0.851	45.4	80.3
	230.0	8.085	1487	1479	47.31	0.833	41.8	80.0
<b>BDT OZ-FT</b>	<b>230.0</b>	<b>8.236</b>	<b>1510</b>	<b>1467</b>	<b>47.45</b>	<b>0.828</b>	<b>40.9</b>	<b>79.7</b>
	230.0	8.578	1567	1438	46.92	0.803	38.3	79.4
	230.0	9.055	1638	1393	46.00	0.763	34.7	78.7
	230.0	9.511	1702	1345	43.94	0.704	30.9	77.8
	230.0	9.947	1758	1292	41.84	0.644	27.3	76.8
	230.0	10.352	1811	1236	39.01	0.574	23.6	76.1
	230.0	10.731	1854	1174	35.99	0.503	20.2	75.1
	230.0	11.075	1887	1106	32.41	0.427	16.9	74.1
	230.0	11.394	1914	1034	28.83	0.355	13.8	73.1
	230.0	11.680	1941	958	24.67	0.281	10.8	72.3
	230.0	11.940	1957	874	19.91	0.207	7.9	71.3
	230.0	12.160	1965	785	15.20	0.142	5.4	70.2
	230.0	12.331	1964	689	11.34	0.093	3.5	69.2
	230.0	12.378	1953	588	11.39	0.080	3.0	68.6
	230.0	12.414	1971	480	13.32	0.076	2.9	69.0
	230.0	12.531	1995	364	10.18	0.044	1.6	69.2
	230.0	12.638	2005	238	5.87	0.017	0.6	69.0
	230.0	12.691	2008	107	1.75	0.002	0.1	68.8

DRAWING NO. PAGE 7 of 8 REV.  
 1TMW3BG -

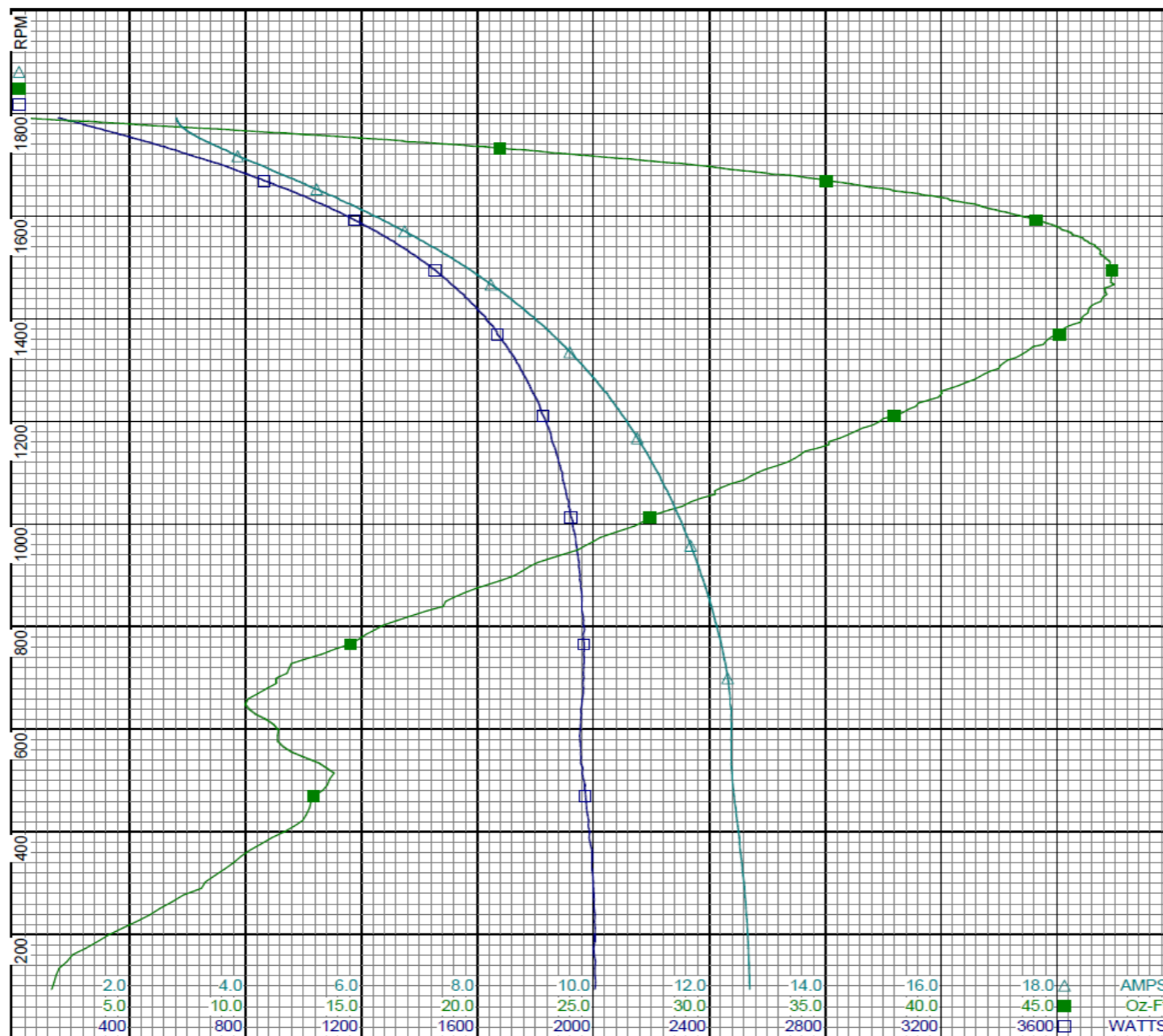
# Performance Data



1TMW3BG

REV.

-



**Curve Descriptions:**

Motor(1) Test 7 Run 230V 60 Hz 4P

- SPEED vs WATTS
- SPEED vs TORQUE
- △ SPEED vs ILine

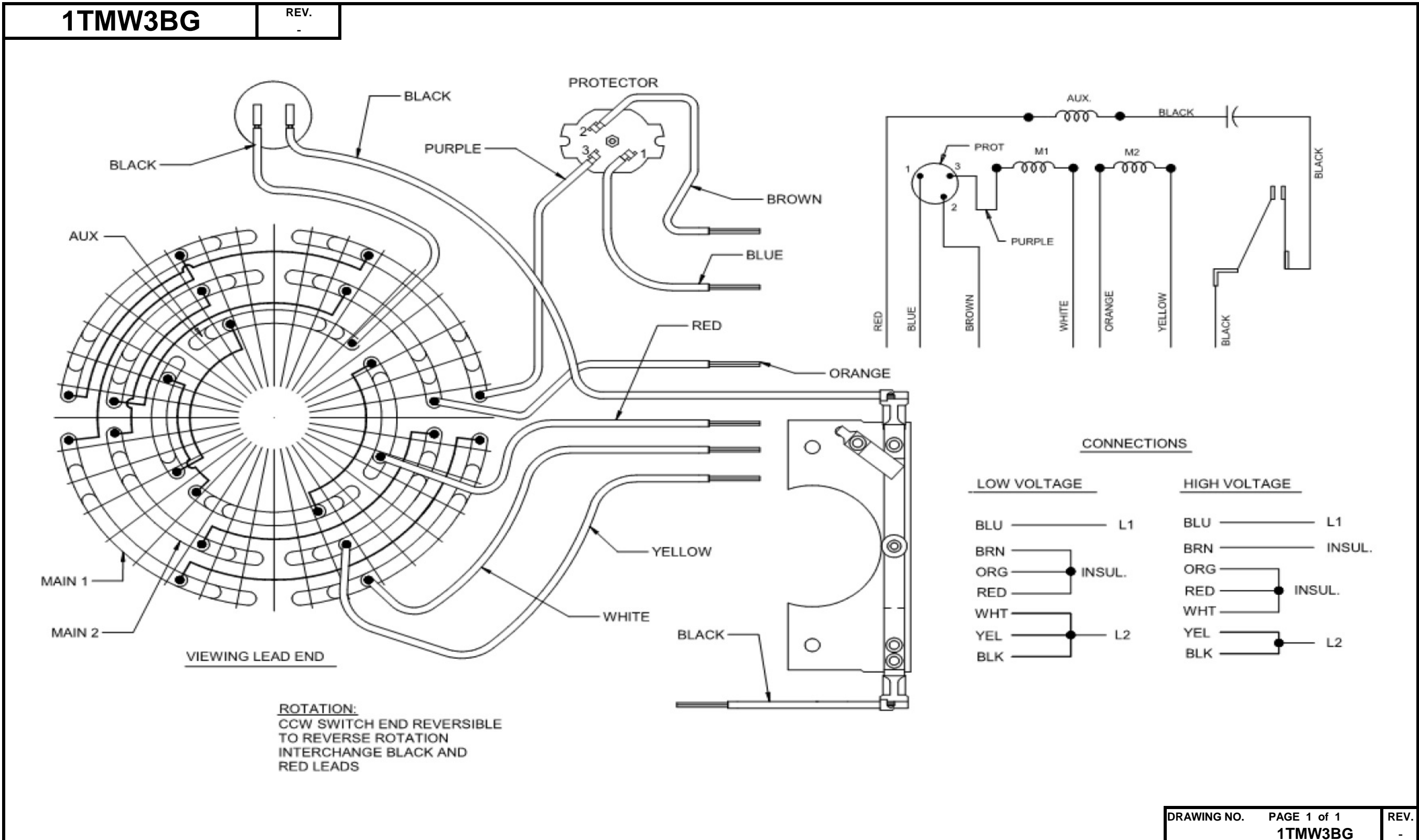
**Motor Ratings:**

C063HDJ132301 1TMW3BG

DRAWING NO.	PAGE 8 of 8	REV.
1TMW3BG		-

Dayton Electric Mfg. Co. Lake Forest, IL 60045 USA

# Wiring Diagram



**Dayton**<sup>®</sup>**FARM DUTY MOTOR**

HP: 1/3

VOLTS: 115/230

AMPS: 6.6/3.3

RPM: 1725

DUTY: CONT

SF: 1.15

KVA CODE: L

ENCL: TEFC

THERMALLY PROTECTED: MANUAL

MFG. NO. PROT. CODE: AVG. F.L.  
EFF.

MTR REF: C63KXHDJ-1323

**[ BAR CODE ]**

Part No 1TMW3BG

PH: 1

HZ: 60

FR: 56C

INS CL: B

AMB: 40 °C

SFA: 6.8/3.4

**Disconnect Power Before Making Any  
Electrical Connections or Changes**

## CONNECTIONS

UNGROUND  
SIDE OF LINE

BLU

BRN

RED

ORG

WHT

YEL

BLK

BLU

WHT

RED

ORG

BRN

YEL

BLK

↑  
LOW  
VOLT  
LINE  
↓↑  
HIGH  
VOLT  
LINE  
↓

INS

INS

MOTOR IS CCW ROTATION LEAD END  
TO REVERSE ROTATION INTERCHANGE  
RED AND BLACK LEADS

E37403



258501

Mfd for Dayton Electric Mfg. Co., Lake Forest, IL 60045 USA

Made in Mexico