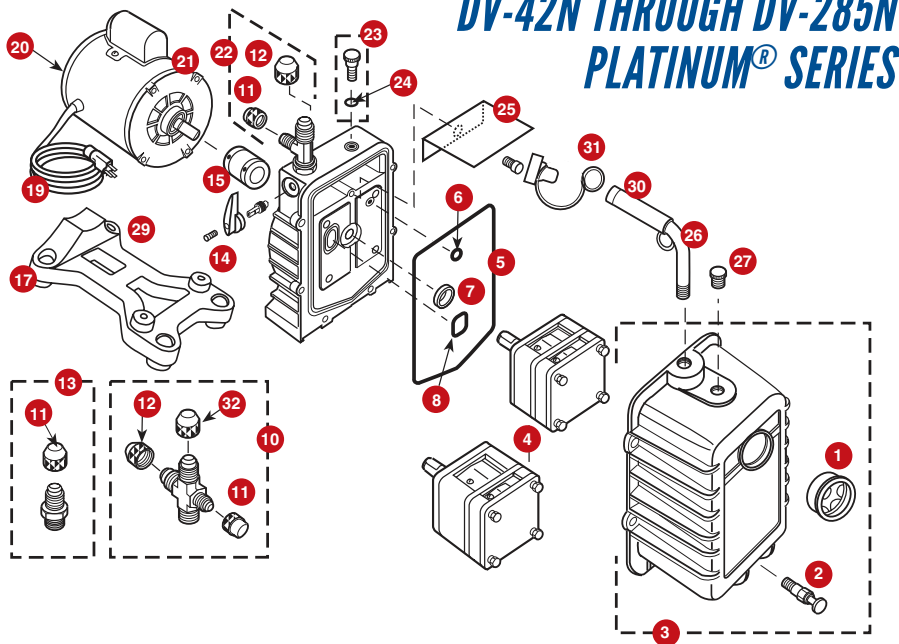


REPAIR PARTS



TROUBLESHOOTING

Symptom	Possible Cause(s)	Corrective Action
Pump won't start	<ol style="list-style-type: none"> 1. Power cord not plugged in securely 2. Motor switch not on 3. Pump temp. below 30°F 4. Inconsistent line voltage 	<ol style="list-style-type: none"> 1. Plug power cord in securely 2. Turn motor switch to ON position 3. Warm up pump to 30°F & turn motor switch on 4. Line voltage must be within 10% of 115 volts
Pump won't pull deep vacuum	<ol style="list-style-type: none"> 1. Contaminated oil 2. Oil level too low 3. Air leak in system being evacuated 4. Pump inlet fittings missing or not tightened 5. Coupler slipping 	<ol style="list-style-type: none"> 1. Change oil 2. Add oil 3. Locate & repair leak(s) 4. Clean or replace O-ring 5. Tighten coupler setscrews to flats of cartridge and motor
Oil drips from point where shaft enters the pump housing	Damaged shaft seal	Replace
Pump shuts down and will not start	Thermal overload may be open	Disconnect pump from system. Wait about 15 minutes for motor to cool and turn it on again. If it cycles off again, return pump to factory for repair.
Pump cycles on and off from a completely cold start and then runs smoothly	Oil backed up into cartridge and was being cleared out. Pump has not been shutdown properly.	Remove 1/4" cap then turn pump on

WARRANTY

Platinum® pumps are warranted against defects in materials and workmanship for 2 years. All JB products are guaranteed when used in accordance with our directions and recommendations, and we limit this warranty to the repair, replacement, or credit at invoice price (our option) of products which in our opinion are defective due to defects in workmanship and/or materials. In no case will we allow charges for labor, expense or consequential damage. Repairs performed on items out of warranty will be invoiced on a nominal basis. Contact your wholesaler for details.

REF. NO. | PART NO. | DESCRIPTION

PLATINUM® PUMP REPAIR PARTS		
1	PR-1	Sight glass
2	PR-2	Drain valve
3	PR-300	DV-42N through DV-200N cover assy. w/sight glass and drain valve
	PR-301	DV-285N cover assy. w/sight glass and drain valve
4	PR-302	DV-85N cartridge w/O-rings and cover seal
	PR-303	DV-142N cartridge w/O-rings and cover seal
	PR-304	DV-200N cartridge w/O-rings and cover seal
5	PR-305	DV-42N Cartridge w/O-rings and cover seal
	PR-314	DV-285N cartridge w/O-rings and cover seal
5	PR-311	Cover seal
6	PR-211	Trap O-ring, gas ballast
7	PR-3	Shaft seal
8	PR-315	Trap O-ring, intake
10	PR-76	Intake cross with caps
11	NFT5-4	1/4" O-ring, intake
12	NFT5-6	3/8" O-ring cap
13	PR-32	1/4" Intake with cap
14	PR-209	Plastic isolation valve handle and screw w/ stem and retainer (not interchangeable w/PR-210)
	PR-208	Flexible coupler (3 parts)
15	PR-308	Flexible section only
	PR-59	Rubber foot for base
19	PR-31	Line Cord (Emerson Motor)
	PR-58	Line Cord (Marathon Motor)
20	PR-35	Rocker Switch With Prongs (Marathon 1101-0105)
	PR-54	Rocker Switch With Wire Leads (Emerson)
21	PR-206	1/2 Hp, 115v, 60 Hz Motor With Line Cord And Switch
	PR-207	1/2 Hp, 115/230v, 50/60 Hz Motor w/ Line Cord And Switch
22	PR-5	Intake Tee With Caps
23	PR-7	Gas Ballast Valve With O-ring
24	P90009	O-ring, Gas Ballast Valve
25	PR-40	Splash Guard And Screw (Excludes 3 CFM Manufactured Before 1/01. Use PR-39.)
26	PR-75	Cushioned Handle With Lift Ring 1/2" NPT And DV-EP-8 As Of 2008
27	PR-22	Oil Fill Plug with O-ring
29	PR-62	Pump Base (Includes Feet)
	PR-501	Cushion And Cap 1/2" NPT
31	DV-EP8	Tethered Safety Cap 3/8"
32	NFT5-8	1/2 Cap With O-ring



JB INDUSTRIES INC.
Aurora IL 60505 USA
 Form 10185-308
 Printed in the USA
 ©2015 JB Industries, Inc.

Main Warehouse
JB INDUSTRIES, INC.
 PO Box 1180 Dept. 85
 Aurora, IL 60507-1180 USA
 sales@jbind.com
 Toll Free Technical Service #: 800.323.0811

CANADA
ALLTEMP products co., LTD.
 827 Brock Road South Pickering,
 Ont., Canada L1E 3J2
 Phone: 905.831.3311
 Fax: 905.831.1864