

Please read and save these instructions. Read through this owner's manual carefully before using product. Protect yourself and others by observing all safety information, warnings, and cautions. Failure to comply with instructions could result in personal injury and/or damage to product or property. Please retain instructions for future reference.

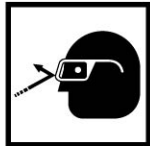
WESTWARD® 10 Way Slide Hammer Puller Set

Operation

Westward 10 way slide hammer puller sets have several pulling attachments to give the user various methods for pulling, maintenance, and repair application to: The slide hammer exerts force when needed. Recommended assemblies for the slide hammer are shown in this parts list.

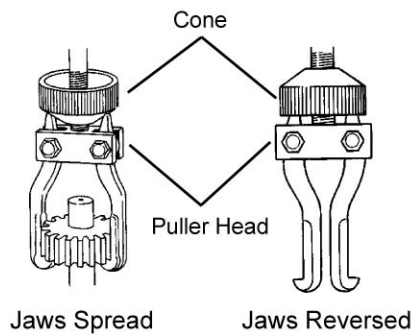
Safety Precautions

CAUTION: To avoid injury when using this tool,



1. Wear eye protection that meets ANSI Z87.1 and OSHA standards.
2. Cover the work with a protective blanket or canvas to reduce danger from breaking parts.
3. Adjusting strap bolts must be tight on puller jaws.
4. Puller legs and jaws must be in-line and the setup must be rigid.
5. Apply force gradually. If maximum force has been applied and the work piece has not moved, use a puller with a larger capacity. Do NOT hit the part with a hammer in an attempt to jar it loose.

Important : When using the jaws in the spread or reversed position as shown, thread the cone as close to the puller head as possible to ensure a firm grip on the part.



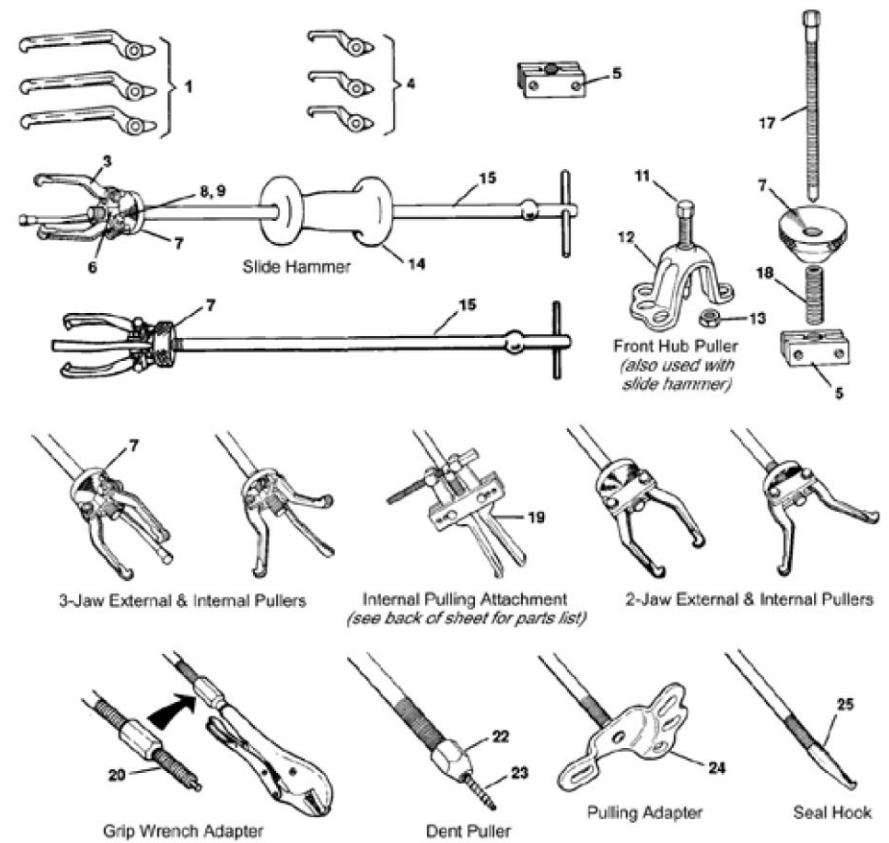
HAN008
Printed in Taiwan
06/07

1



10 Way Slide Hammer Puller Set

Parts List



2



10 Way Slide Hammer Puller Set

For Repair Parts, call 1-800-323-0620
24 hours a day – 365 days a year

Please provide the following:

- Model Number
- Serial Number (if any)
- Part description and number as shown on parts list

Reference Number	Description	Quantity	Part No.
1	6-1/2" Internal / External Puller Jaw	3	1MZP8-1
3	3-3/4" Internal / External Puller Jaw	3	1MZP8-3
4	2-3/8" Internal / External Puller Jaw	3	1MZP8-4
5	Cross Nut	1	1MZP8-5
6	3-Way Puller Head	1	1MZP8-6
7	Cone	1	1MZP8-7
8	Hex Jam Nut	3	1MZP8-8
9	Hex Hd. Cap Screw	3	1MZP8-9
11	Forcing Screw	1	1MZP8-11
12	Puller Head	1	1MZP8-12
13	Hex Jam Nut	1	1MZP8-13
14	Hammer (5lb)	1	1MZP8-14
15	Shank & T-bar Assembly	1	1MZP8-15
17	Forcing Screw	1	1MZP8-17
18	Sleeve	1	1MZP8-18
20	Vise Grip Adapter(single-lead thread)	1	1MZP8-20
22	Retainer	1	1MZP8-22
23	Self-Tapping Screw	1	1MZP8-23
24	Pulling Adapter	1	1MZP8-24
25	Seal Hook	1	1MZP8-25

Warranty

Limited Lifetime Warranty

Should this product ever fail to perform satisfactorily due to a defect or poor workmanship, within one year of purchase return it to the place of purchase and it will be replaced, free of charge . Incidental or consequential damages are excluded from this warranty.

