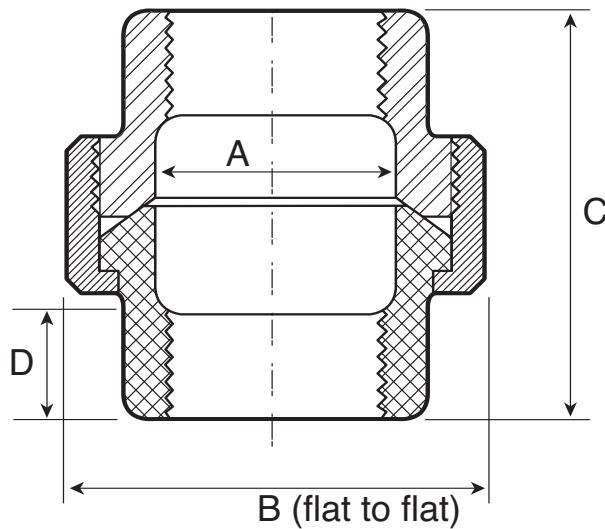


MALLEABLE IRON

UNION - BLACK

Features

- 300 Class
- 100% Inspected and tested



Part No.	Size	
1LCA3	1/4"	Threaded
1LCA4	3/8"	Threaded
1LCA5	1/2"	Threaded
1LCA6	3/4"	Threaded
1LCA7	1"	Threaded
1LCA8	1-1/4"	Threaded
1LCA9	1-1/2"	Threaded
1LCB1	2"	Threaded
1LCB2	2-1/2"	Threaded
1LCB3	3"	Threaded
1LCB4	4"	Threaded

- Material meets ANSI/ASME A 197-79 standard
- Dimensions meet ANSI/ASME B16.14 standard
- Threads meet ANSI B1.20.1

Dimensions are in inches

Part No.	Size	A	B	C	D
1LCA3	1/4"	0.30	1.33	1.55	0.43
1LCA4	3/8"	0.42	1.50	1.71	0.47
1LCA5	1/2"	0.54	1.76	1.81	0.57
1LCA6	3/4"	0.74	2.15	2.12	0.64
1LCA7	1"	0.95	2.48	2.31	0.75
1LCA8	1-1/4"	1.27	3.02	2.66	0.84
1LCA9	1-1/2"	1.50	3.28	2.85	0.87
1LCB1	2"	1.93	3.96	3.23	1.00
1LCB2	2-1/2"	2.32	4.81	3.33	1.17
1LCB3	3"	2.90	5.37	4.09	1.23
1LCB4	4"	3.82	7.00	4.47	1.33