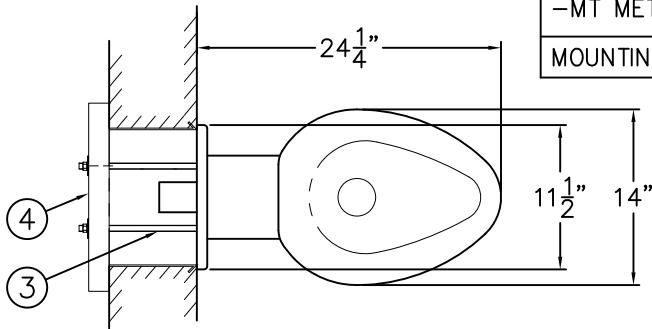




REFERENCE DRAWINGS		
-SW WALL SLEEVE /	-W WALL SUPPLY	9925-236-001
-MT METAL TEMPLATE	-T TOP SUPPLY	9925-237-001
MOUNTING HARDWARE		9957-900-001

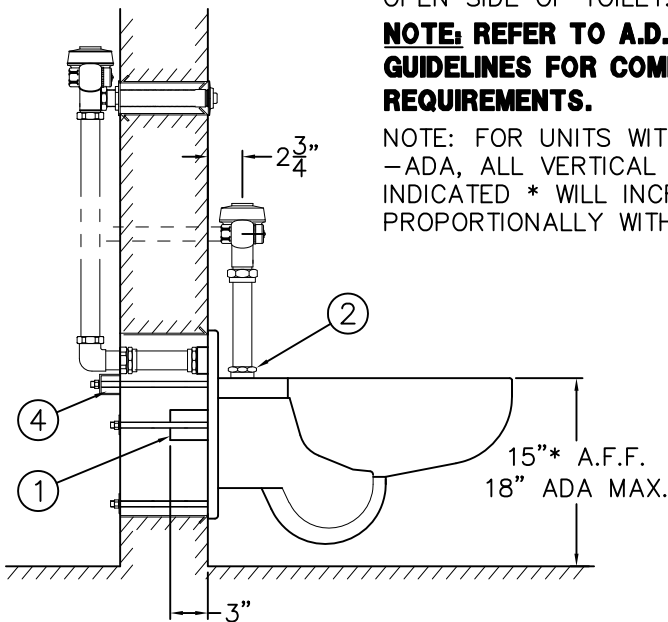


**TOP VIEW**

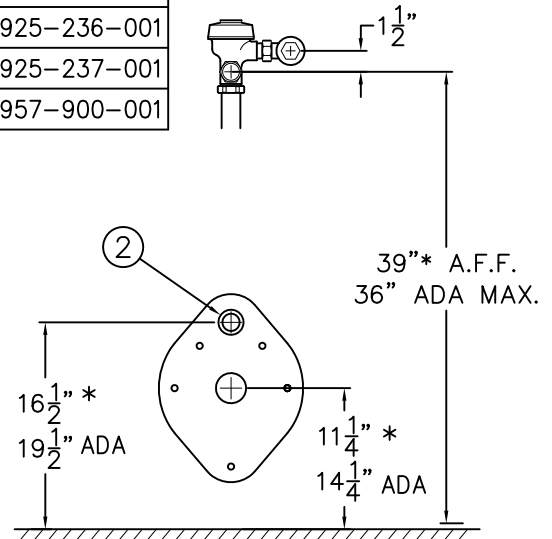
**FOR -ADA MODELS** -FLUSH VALVE MUST BE HYDRAULICALLY ACTUATED OR SUPPLIED WITH A SPECIAL HANDLE. MAX. CONTROL HEIGHT IS 36" ABOVE FINISHED FLOOR. CONTROLS MUST BE LOCATED ON OPEN SIDE OF TOILET.

**NOTE: REFER TO A.D.A. ACCESSIBILITY GUIDELINES FOR COMPLETE INSTALLATION REQUIREMENTS.**

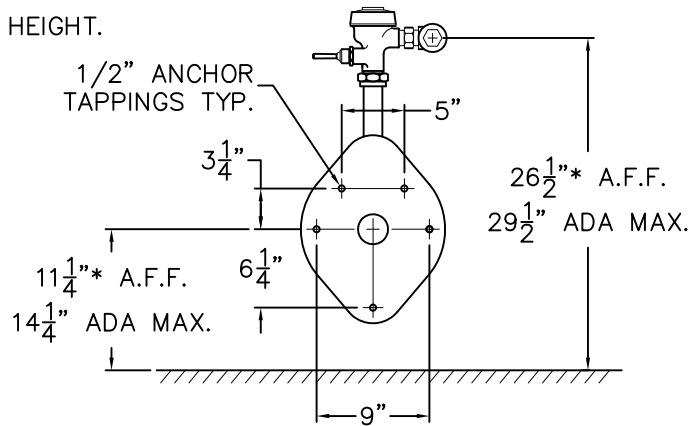
NOTE: FOR UNITS WITH SUFFIX OPTION -ADA, ALL VERTICAL DIMENSIONS INDICATED \* WILL INCREASE PROPORTIONALLY WITH ADA SEAT HEIGHT.



**SIDE VIEW**



**(-W) WALL SUPPLY REAR VIEW**



**(-T) TOP SUPPLY REAR VIEW**

**INSTALLATION INSTRUCTIONS:**

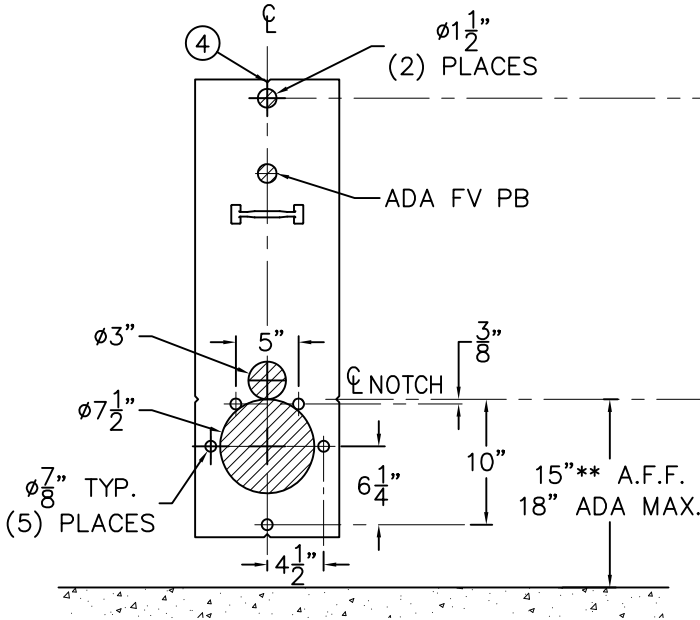
- A- SEE REFERENCE DRAWING BOX FOR WALL SLEEVE INSTALLATION INSTRUCTIONS (SUFFIX OPTION -SW).
- B- ROUGH-IN PLUMBING FOR THE FOLLOWING CONNECTIONS:
  - TOILET WALL WASTE OUTLET 2-3/8" O.D. PLAIN END ①.
  - SUFFIX OPTION -W03 3" O.D. PLAIN END WASTE ①.
  - FLUSHING INLET CONNECTION 1-1/2" NPT ②.
- C- INSTALL 1/2"-13 ALL THREAD STUDS ③ INTO ANCHOR TAPPINGS AT REAR OF FIXTURE. STUDS MUST HAVE A MINIMUM 1/2" ENGAGEMENT.
- D- PLACE TOILET UP AGAINST CELL WALL, SLIDING THE STUDS THROUGH WALL SLEEVE OPENINGS. **NOTE:** IT MAY BE NECESSARY TO SUPPORT OFF-FLOOR FIXTURES ON CELL SIDE OF WALL TO SECURE PROPERLY FROM PIPE CHASE.
- E- PLACE WASHERS, MOUNTING CHANNEL ④ AND NUTS ONTO STUDS; TIGHTEN TO 60FT/LBS.
- F- FLUSH SUPPLY LINE. MAKE-UP WASTE CONNECTION AND MOUNT FLUSH VALVE PER MANUFACTURERS' RECOMMENDATIONS.

ACORN ENGINEERING COMPANY P.O. BOX 3527 Industry, CA 91744 15125 Proctor Ave Industry, CA 91746 (626) 336-4561 FAX (626) 961-2200	<b>TITLE</b> <b>BLOWOUT JET TOILET - OFF FLOOR CAT. #1675 / 1675-ADA -W/T</b>		
	<b>MANUFACTURE DATE</b> <b>OCTOBER 1997</b> <b>TO PRESENT</b>	<b>DATE ISSUED</b> <b>8/15/97</b>	<b>DRAWING NUMBER</b> <b>9925-040-002</b>
		<b>DATE REVISED</b> <b>04/02/13</b>	

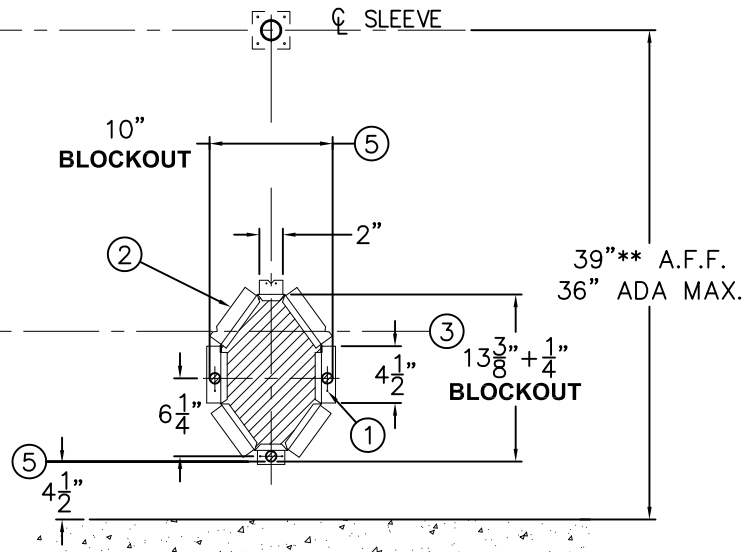


ALL VERTICAL DIMENSIONS INDICATED  
 \*\* INCREASE PROPORTIONATELY WITH  
 ADA SEAT HEIGHT.

**BOTH VIEWS ARE FROM CELL SIDE**  
 SHADED AREAS ARE REQUIRED WALL OPENINGS



**METAL TEMPLATE (-MT)**



**WALL SLEEVE (-SW)**

**-SW WALL SLEEVES INSTALLATION INSTRUCTIONS:**

SLEEVES ARE INSTALLED IN FORMS USING NAIL HOLES (1) PROVIDED OR GROUTED INTO BLOCK WALLS, BECOMING A PERMANENT PART OF THE WALL.

NOTE:

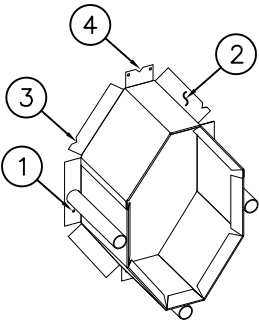
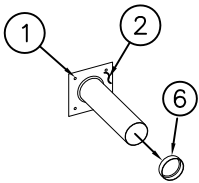
FOR POURED WALL CONSTRUCTION, TEMPORARY BRACING SHOULD BE INSTALLED WITHIN OPENING TO PREVENT DEFORMATION TO SLEEVE WHICH MAY OCCUR DURING POUR. DO NOT POUR CONCRETE DIRECTLY ON TOP OF WALL SLEEVE. THE PUSHBUTTON SLEEVE IS CAPPED; THIS CAP (6) MUST BE REMOVED FROM THE CHASE SIDE OF THE WALL BEFORE INSTALLING FLUSH VALVE PUSHBUTTON.

- A- INSTALL SLEEVE WITH FLANGE (2) ON CHASE SIDE OF WALL.
- B- SIDE NOTCHES (3) INDICATE INTEGRAL SEAT HEIGHT LOCATED 15" ABOVE FINISHED FLOOR ON CELL SIDE.
- C- VERTICAL OR TOP AND BOTTOM (4) NOTCHES INDICATE VERTICAL CENTERLINE OF SLEEVE OR TOILET FIXTURE.
- D- USE BLOCK OUT DIMENSIONS (5) SHOWN WHEN SLEEVES ARE NOT AVAILABLE.

**-MT METAL TEMPLATES INSTALLATION INSTRUCTIONS:**

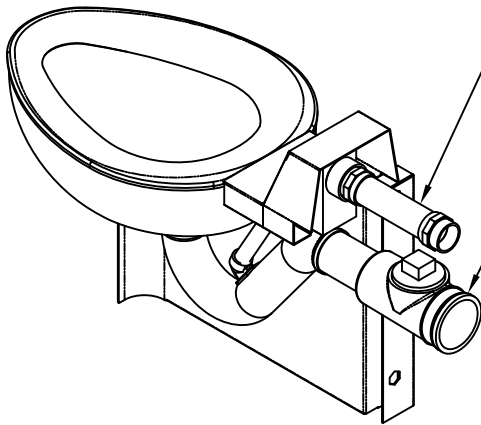
METAL TEMPLATES ARE USED TO LAYOUT REQUIRED WALL OPENINGS FOR SUBSEQUENT CORE DRILLING OR FLAME CUTTING.

- A- MEASURE FROM THE FINISHED FLOOR ON CELL SIDE AND STRIKE A HORIZONTAL CHALK LINE ON THE WALL AT DIMENSIONS SHOWN TO INDICATE INTEGRAL SEAT HEIGHT (3).
- B- STRIKE A VERTICAL CHALK LINE AT DIMENSIONS SHOWN TO INDICATE VERTICAL CENTERLINE (4) OF SLEEVE OR FIXTURE.
- C- PLACE TEMPLATE AGAINST WALL ALIGNING VERTICAL AND HORIZONTAL NOTCHES WITH CHALK LINES AND MARK REQUIRED WALL OPENINGS.



ACORN ENGINEERING COMPANY  
 P.O. BOX 3527 Industry, CA 91744  
 15125 Proctor Ave Industry, CA 91746  
 (626) 336-4561 FAX (626) 961-2200

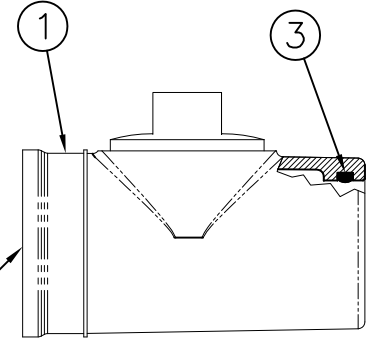
TITLE <b>SLEEVES AND TEMPLATES (CAT. 1675-W) (CAT. *1675-ADA-W)</b>		
MANUFACTURE DATE <b>OCT 1977</b>	DATE ISSUED <b>03/09/13</b>	DRAWING NUMBER <b>9925-236-001</b>
<b>TO PRESENT</b>	DATE REVISED <b>05/30/13 B</b>	



Optional -FVT Flush Valve Thru Wall Connection. Shown For Reference.

Optional -CO1 Waste Fitting. Shown For Reference.

REFERENCE DRAWING	
WASTE CONNECTION WITH CLEANOUT -CO1	9985-125-002

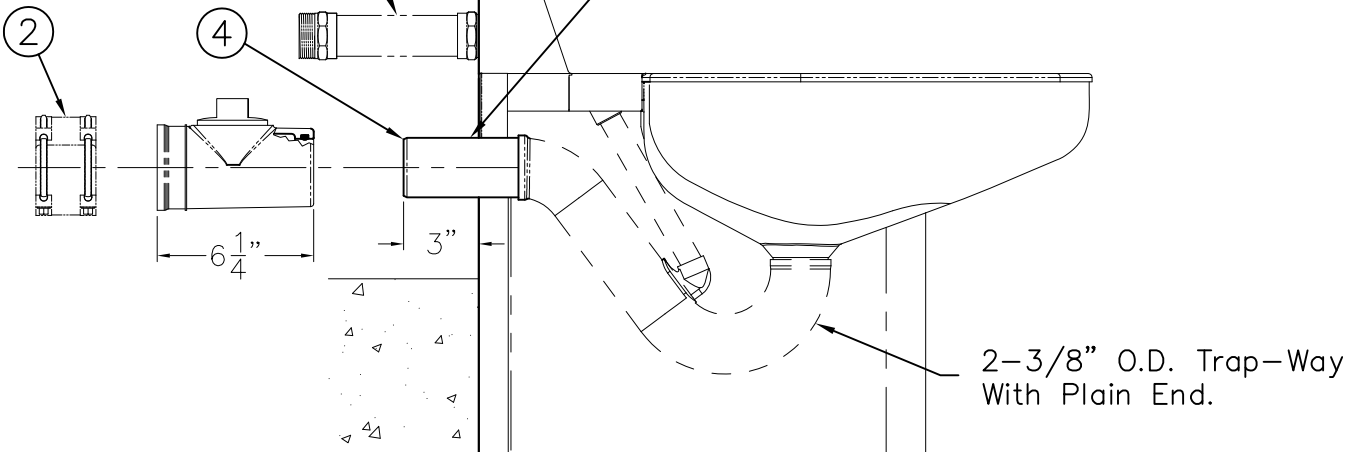


NOTE: Optional -CO1 Waste Fitting Available With 3" or 4" No-Hub

*Scaled: X 2*

Optional -FVT Flush Valve Thru Wall Connection Shown For Reference

Plain End Extends 3" Beyond Back Of Fixture. Optional Extended Waste Is Available -TWE



**MODEL #1685 SHOWN FOR REFERENCE**

**INSTALLATION INSTRUCTIONS**

A-INSERT O-RING ③ INTO GROOVE OF WASTE FITTING ①. LUBRICATE THE O-RING ③ WITH O-RING LUBRICANT.

B-INSTALL WASTE FITTING ① TO FIXTURE P-TRAP WASTE EXTENSION ④. ENGAGEMENT IS APPROXIMATELY 1-1/4". NOTE: TOILET WASTE

EXTENSION ④ IS 3" BEYOND BACK OF FIXTURE. LONGER WASTE EXTENSION IS AVAILABLE.

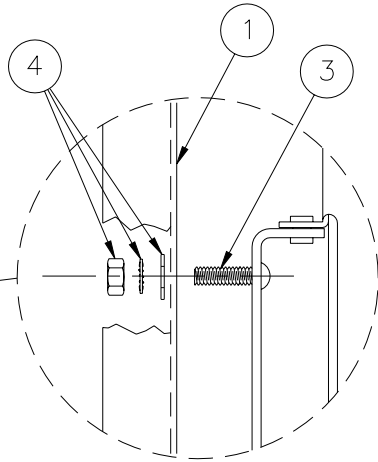
C-MAKE UP WASTE FITTING CONNECTION TO WASTE PIPING USING NO-HUB (BAND) CONNECTOR ② BY OTHERS.

**ACORN ENGINEERING COMPANY**  
P.O. BOX 3527 INDUSTRY, CA. 91744  
(626) 336-4561 FAX (626) 961-2200

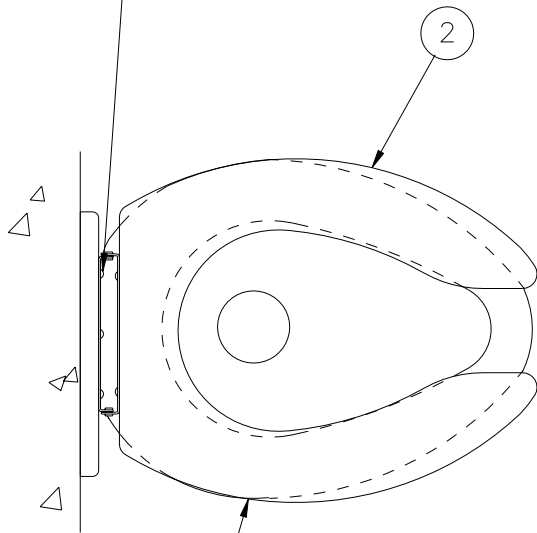
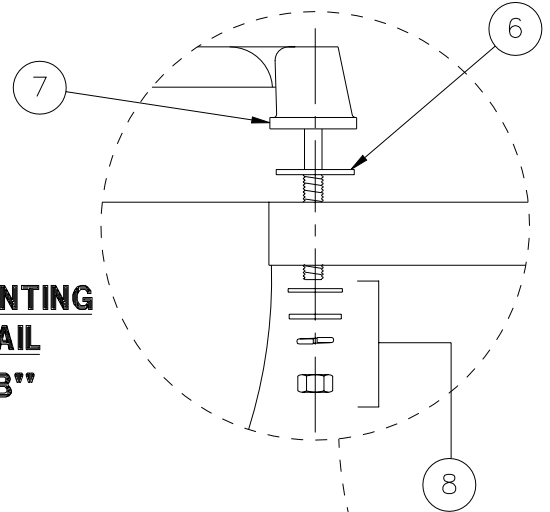
TITLE <b>NO-HUB WASTE CONNECTION WITH CLEANOUT -CO1</b>		
MANUFACTURE DATE <b>JULY 1975</b> <b>PRESENT</b>	DATE ISSUED <b>1/29/96</b>	DRAWING NUMBER <b>9925-054-001</b>
	DATE REVISED <b>11/08/13 D</b>	



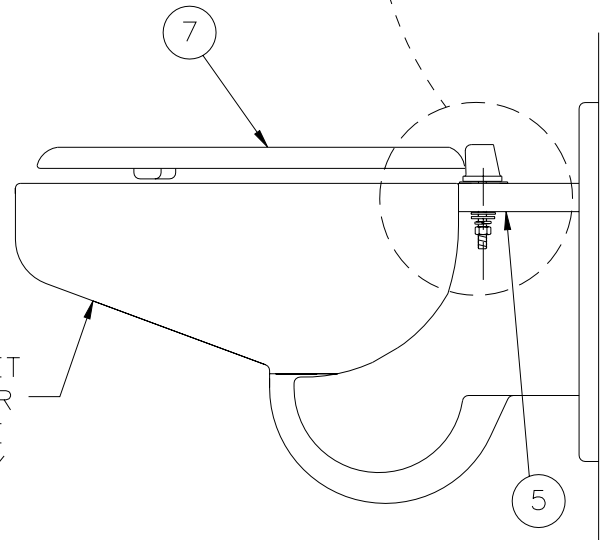
**MOUNTING  
DETAIL  
"A-A"**



**MOUNTING  
DETAIL  
"B-B"**



1679 TOILET  
SHOWN FOR  
REFERENCE  
ONLY



1675 TOILET  
SHOWN FOR  
REFERENCE  
ONLY

**INSTALLATION INSTRUCTIONS-COMBY AND 1679 TOILET  
PRIOR TO MOUNTING FIXTURE ON WALL:**

- A- LOCATE HINGED SEAT MOUNTING HOLES ON FIXTURE ①.
- B- POSITION HINGED SEAT ② AGAINST UNIT ① BY INSERTING SCREWS ③ INTO MOUNTING HOLES.
- C- ASSEMBLE NUT, WASHER AND LOCK-WASHER ④ AS SHOWN IN MOUNTING DETAIL "A-A".

**INSTALLATION INSTRUCTIONS-TOILETS  
PRIOR TO MOUNTING FIXTURE ON WALL:**

- A- LOCATE HINGED SEAT MOUNTING HOLES IN FIXTURE ⑤.
- B- INSERT WASHERS ⑥ BETWEEN TOP OF TOILET AND HINGE SEAT ⑦.
- C- POSITION HINGED SEAT ⑦ ON TOP OF UNIT.
- D- ASSEMBLE HARDWARE ⑧ AS SHOWN IN MOUNTING DETAIL "B-B"



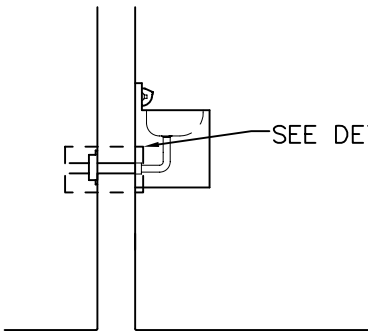
**ACORN ENGINEERING COMPANY**  
P.O. BOX 3527 INDUSTRY, CA. 91744  
(626) 336-4561 FAX (626) 961-2200

TITLE **-HS HINGED SEAT OPTION INSTALLATION DETAIL - COMBYS AND TOILETS**

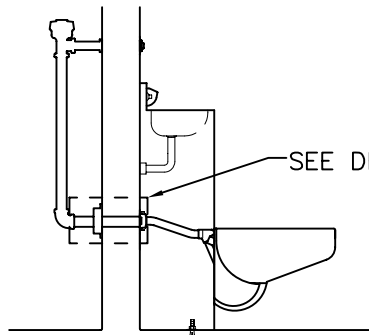
MANUFACTURE DATE  
**FEBRUARY 1999**  
**TO PRESENT**

DATE ISSUED  
**02/22/99**  
DATE REVISED  
**03/26/01**

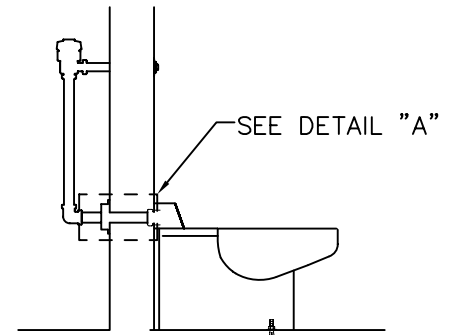
DRAWING NUMBER  
**9925-048-001**



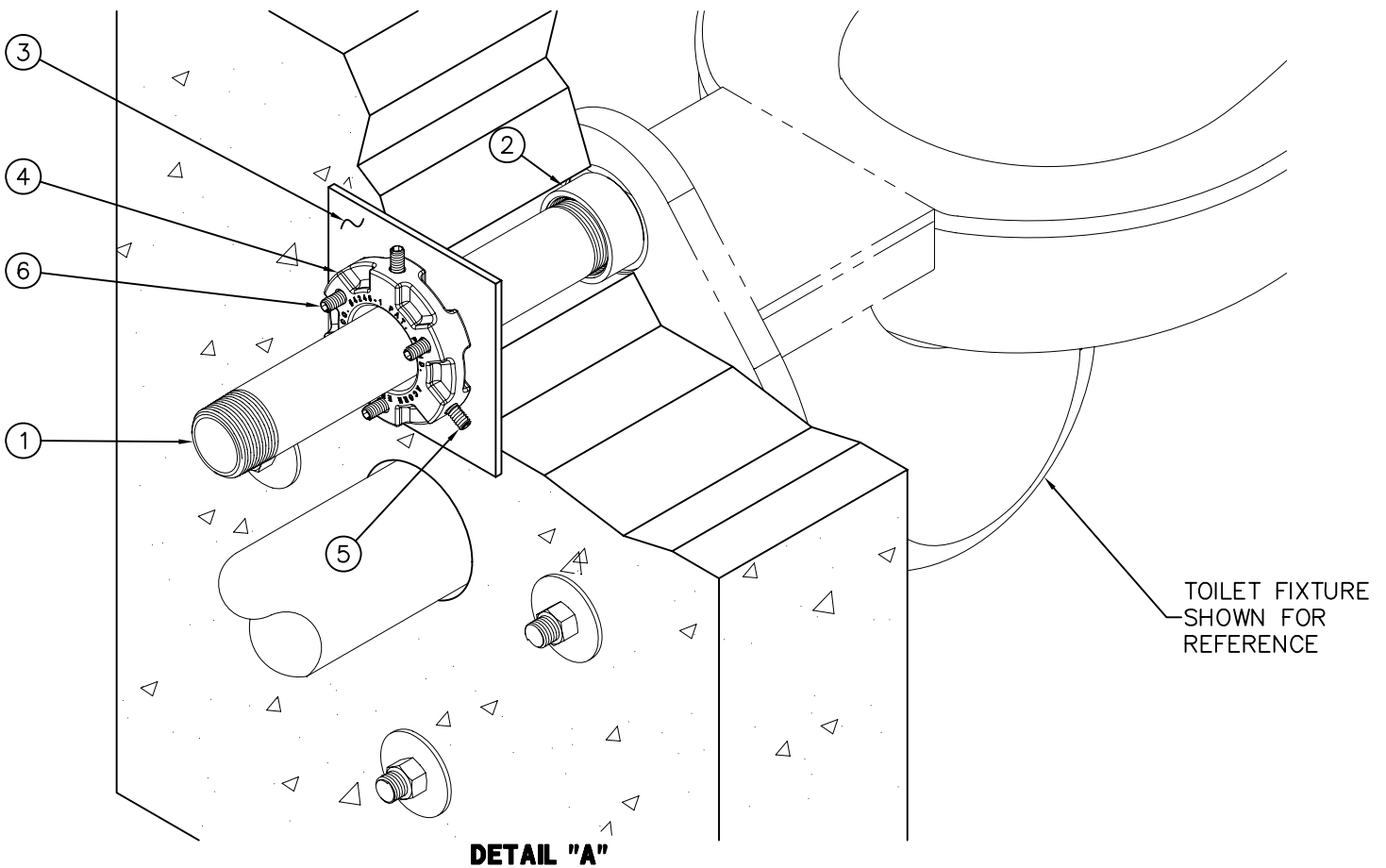
Lavy Waste Connection



Comby Flushing Inlet Connection



Toilet Flushing Inlet Connection



**INSTALLATION INSTRUCTIONS:**

- A- SECURE PIPE ① TO FIXTURE CONNECTION ② THROUGH WALL.
- B- PLACE THRUST PLATE ③ FLUSH AGAINST WALL.
- C- PLACE ANCHORING COLLAR ④ FLUSH AGAINST THRUST PLATE ③.
- D- HOLD UNIT AGAINST WALL, PARALLEL TO THE FLOOR.

- E- TIGHTEN SCREWS ⑤ (3 PLACES) TO SECURE ANCHORING COLLAR ④ TO PIPE ①.
- F- TIGHTEN SCREWS ⑥ (3 PLACES) TO PULL PIPE ① AND PUSH AGAINST THRUST PLATE ③ IN ORDER TO HOLD FIXTURE WITH TENSION AGAINST WALL.



ACORN ENGINEERING COMPANY  
P.O. BOX 3527 INDUSTRY, CA. 91744  
(626) 336-4561 FAX (626) 961-2200

TITLE <b>3395 ANCHORING ASSEMBLY</b>		
MANUFACTURE DATE <b>MAY 1998</b> <b>TO PRESENT</b>	DATE ISSUED <b>10/06/99</b>	DRAWING NUMBER <b>9925-759-001</b>
	DATE REVISED <b>04/08/11</b>	