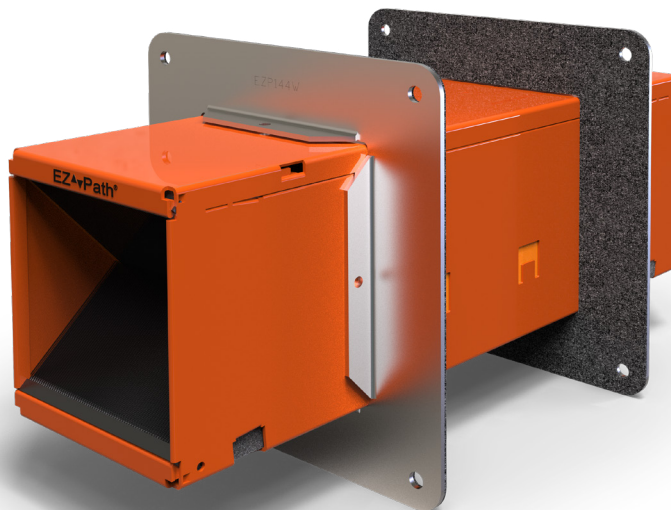


EZ Path® Series 44+ Fire Rated Pathway



The EZ Path® Series 44+ Fire Rated Pathway is a pathway device designed to allow cables to penetrate fire-rated walls and floors without the need for firestopping. This device features a built-in fire and smoke sealing system that automatically adjusts to the amount of cables installed. Once installed in a fire barrier, cables can be easily added or removed at any time without the need to remove or reinstall firestopping materials.

The EZ Path® Series 44+ Fire Rated Pathway consists of an enclosed heavy gauge galvanized steel pathway lined with intumescent material engineered for rapid expansion when exposed to fire or high temperatures, quickly sealing the pathway and preventing the passage of flames and smoke. EZ Path® Series 44+ Fire Rated Pathway is painted safety orange for easy identification. Its compact square profile allows a maximum number of cables to be installed in a relatively small area. The pathway measures approximately 4 in (101.6 mm) x 4-5/8 in (118 mm) and is 14 in (356 mm) long and can be increased by 6" (152 mm) for every Series 44+ Extension module (EZD44ES) installed.



Applications

EZ Path® Series 44+ Fire Rated Pathway is designed for easy installation in floors and walls. Tested and approved cable capacities range from 0 to 100% visual fill. EZ Path® Series 44+ Fire Rated Pathway when installed with available single wall plates is designed for new cable installations. In these installations, the device does not require mechanical attachment to either the wall or the wall framing and must be installed after the wallboard has been installed. Split floor plates and multi-gang wall and floor brackets permit installation around previously installed cables if so desired. These installations require mechanical attachment to the barrier. A list of available accessories along with their intended use is shown on page 2 under available components.

EZ Path® Series 44+ Fire Rated Pathway Fire Rated Pathway provides exceptional cable capacity. A single unit installed in a wall exceeds the cable carrying capacity of a 6 in (152 mm) sleeve utilizing typical putty firestop systems (35% cable loading). Multiple ganged pathways utilizing available wall bracket kits provide additional capacity or segregation of cables by use, type, installer or vendor as desired.

PHYSICAL PROPERTIES

| | |
|-----------------------------------------|-------------------------------------------------------------|
| Shell Composition | 0.059" (1.5 mm) Galvanized Steel |
| Cable Loading Area | 12.66 sq in (81.7 sq cm) 3-3/8" (86 mm) x 3-3/4" (95 mm) |
| Allowable Cable Fill | 0 to 100% Visual |
| Fire Resistance Ratings | 1, 2, 3 and 4 hour |
| Expansion Begins | 350°F (177°C) |
| Volume Expansion | 15x |
| Sample Cable Volume - Cat 6 (0.236" OD) | 210 (nom.) |
| In Service Temperature | -10°F (-23°C) to 120°F (49°C) |
| Storage Temperature | Less than 120°F (49°C) |
| Shelf Life | No Limit |

EZ Path® Series 44+ Fire Rated Pathway

EZ Path®
Fire-Rated Pathway

Specifications

All data, video, and communications cable bundles shall utilize an enclosed fire rated pathway device wherever said cables penetrate rated walls and floors. The fire-rated pathway shall contain a built-in fire sealing system sufficient to maintain the hourly fire rating of the barrier being penetrated. The self-contained sealing system shall automatically adjust to the installed cable loading and shall permit cables to be installed, removed, or retrofitted without the need to remove or reinstall firestop materials. The pathway shall be UL Certified and/or FM Systems Approved and tested to the requirements of ASTM E814 (UL1479) and CAN/ULC-S115.

Specified Divisions

| | | |
|-------------|----------|--------------------------|
| Division 7 | 07 84 13 | Penetration Firestopping |
| Division 26 | 26 00 00 | Electrical |
| Division 27 | 27 00 00 | Communications |

Performance

EZ Path® Series 44+ Fire Rated Pathway is UL Tested and Certified in accordance with ASTM E814 (UL1479) and CAN/ULC-S115. Systems are available for common floor and wall constructions with ratings up to and including 4 hours.



Limitations

This product has been designed to be safe with plastics. It has been used extensively and successfully with various types of plastic pipes, tubes, and plastic cable insulations. Variations in these materials, however, make it impossible to guarantee compatibility. STI strongly recommends that the user consults with the pipe, tubing, or cable manufacturer in question regarding any known sensitivities or potential restrictions before applying this product.

Cable Installation

Cables may easily be added or removed at any time without removing or reinstalling the fire seal. Cables may be added individually or in bundles. Wrapping ends with a low-friction tape facilitates cable insertion. A self-adjusting cable throat automatically adjusts to accommodate the cable bundle as it passes through the pathway.

Maintenance

No maintenance of the pathway is normally required.

System Selection

To find your firestop system or create a submittal, visit <https://systems.stifirestop.com/> to use System Search & Submittal Builder. You may also visit the [UL Online Certifications Directory/UL Product iQ™](#) for complete listings. (Firestop Systems).

Technical Service

Specified Technologies Inc. provides toll free technical support to assist in product selection and appropriate installation design. UL System designs suitable for submittal or specification purposes are available on request. A complete library of technical information is provided at the company's website www.stifirestop.com including Safety Data Sheets (SDS's).

Precautionary Information

The use of this device is subject to local, regional and national codes. Consult the local Building Code Official or Authority Having Jurisdiction regarding any regional or local requirements that might influence the selection or use of this product.

Features & Benefits

- Easy to install
- No firestopping required
- Firestopped at all stages of use
- UL tested - low leakage
- Acoustically tested
- UL Certified for the complete range of its capacity
- Interlocking design for easy gang installations
- Permits cable segregation by use, type, vendor
- More than twice the capacity of EZ Path® 33

EZ Path® Series 44+ Fire Rated Pathway



Availability

EZ Path® Products are available from Specified Technologies Inc. (STI) authorized distributors. For additional purchasing and technical information or for the names and locations of the nearest representative and/or distributor, regarding this and other Specified Technology products, please call 1-800-992-1180 or visit www.stifirestop.com.

ORDERING INFORMATION - SINGLE DEVICE

| Catalog Number | UPC Number | Description | (UOM) Qty. | Case Qty. | Weight (Each) |
|----------------|--------------|-------------------------------------------------------------|------------|-----------|--------------------|
| EZD44S2 | 730573001004 | Fire-Rated Pathway Device | 1 | 4 | 5.56 lbs (2.52 kg) |
| EZDP44S2 | 730573001066 | Fire-Rated Pathway Kit – Device with wall plates and labels | 1 | 1 | 7.92 lbs (3.59 kg) |
| EZP144W | 730573001448 | Single Wall Plates and Labels | 1 | 1 | 2.11 lbs (0.96 kg) |
| EZDP144RS2 | 730573001073 | Split Wall Plate – Device with split wall plate and labels | 1 | 1 | 8.17 lbs (3.70 kg) |
| EZP144RS | 730573001486 | Split Wall Plate – Plate only | 1 | 1 | 2.42 lbs (1.10 kg) |
| EZDP144FKS2 | 730573001080 | Floor Kit – Device with floor plate | 1 | 1 | 7.32 lbs (3.32 kg) |
| EZP144F | 730573008348 | Split Floor Plate – Plate only | 1 | 1 | 1.50 lbs (0.68 kg) |

ORDERING INFORMATION - GANG PLATES FOR WALLS

| | | | | | |
|----------|--------------|------------------------------------------------------|---|---|--------------------|
| EZP544W | 730573005446 | Multi-gang wall plate brackets for 1-5 devices | 1 | 8 | 3.91 lbs (1.77 kg) |
| EZP544WD | 730573005460 | Multi-gang wall plate brackets for 2-10 devices | 1 | 8 | 4.00 lbs (1.81 kg) |
| EZP644W | 730573006481 | Multi-gang wall plate brackets for 6 devices | 1 | 8 | 4.40 lbs (1.99 kg) |
| EZP644WD | 730573006573 | Multi-gang wall plate brackets for 12 devices | 1 | 8 | 4.80 lbs (2.18 kg) |
| EZP544WV | 730573005477 | Vertical Multi-Gang Wall Bracket Kit for 1-5 devices | 1 | 1 | 7.00 lbs (3.18 kg) |

ORDERING INFORMATION - MODULAR FLOOR GRID SYSTEM

| | | | | | |
|------------|--------------|------------------------------------------------------------------------------------------------|---|---|----------------------|
| EZDG444S2 | 730573001103 | Single Bank Floor Grid – Four (4) Devices with floor frame | 1 | 1 | 37.40 lbs (16.96 kg) |
| EZG444 | 730573004433 | Single-Slot Frame for Four (4) Pathways | 1 | 1 | 11.39 lbs (5.17 kg) |
| EZDG844S2 | 730573001110 | Dual-slot Frame Kit with 8 Pathways – (Includes eight (8) Series 44+ devices with EZG844) | 1 | 1 | 65.86 lbs (29.87 kg) |
| EZG844 | 730573008447 | Dual-Slot Frame for Eight (8) Pathways | 1 | 1 | 16.25 lbs (7.37 kg) |
| EZDG1644S2 | 730573001127 | Quad-slot Frame Kit with 16 Pathways – (Includes sixteen (16) Series 44+ devices with EZG1644) | 1 | 1 | 49.96 lbs (22.66 kg) |
| EZG1644 | 730573006443 | Multi-Slot Frame for Sixteen (16) Pathways | 1 | 1 | 26.59 lbs (12.06 kg) |
| EZG444CP | 730573004494 | Floor Grid Splice Plate Kit – includes plate and gasket | 1 | 1 | 2.11 lbs (0.95 kg) |
| EZD444MBS2 | 730573001097 | Single Bank of Devices – Four (4) Devices with hanger bracket | 1 | 1 | 23.37 lbs (10.60 kg) |
| EZP444MB | 730573004487 | Hanger Bracket for Modular Floor Grid System | 1 | 1 | 1.30 lbs (0.59 kg) |
| TRK444 | 730573004463 | T-Rating Kit | 1 | 1 | 15.36 lbs (6.97 kg) |

ORDERING INFORMATION - ACCESSORIES

| | | | | | |
|----------|--------------|---------------------------------------------------------------------------|---|---|--------------------|
| EZD44ES | 730573000694 | 6" Extension Module – use with Series 44+ pathway ONLY | 1 | 1 | 2.44 lbs (1.11 kg) |
| EZRCM44S | 730573009345 | Radius Control Module – one pair (2) for use with Series 44+ pathway ONLY | 1 | 1 | 0.12 lbs (0.05 kg) |

IMPORTANT NOTICE: ALL STATEMENTS, TECHNICAL INFORMATION, AND RECOMMENDATIONS CONTAINED HEREIN ARE BASED UPON TESTING BELIEVED TO BE RELIABLE, BUT THE ACCURACY AND COMPLETENESS THEREOF IS NOT GUARANTEED.

STI TYPICALLY WARRANTIES ITS PRODUCTS FOR ONE FULL YEAR. FOR COMPLETE DETAILS OF OUR STANDARD WARRANTY, PLEASE VISIT WWW.STIFIRESTOP.COM/LEGAL/WARRANTY

MADE IN THE USA - © 2021 SPECIFIED TECHNOLOGIES INC.

