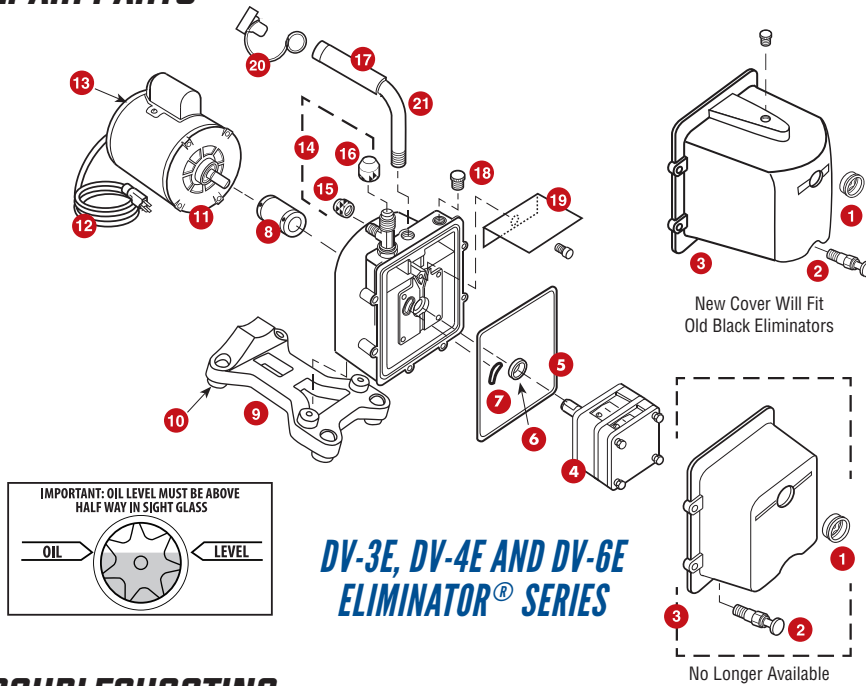


REPAIR PARTS

REF. NO. | PART NO. | DESCRIPTION



DV-3E, DV-4E AND DV-6E ELIMINATOR® SERIES

TROUBLESHOOTING

Symptom	Possible Cause(s)	Corrective Action
Pump won't start	<ol style="list-style-type: none"> 1. Power cord not plugged in securely 2. Motor switch not on 3. Pump temp. below 30°F 4. Inconsistent line voltage 	<ol style="list-style-type: none"> 1. Plug power cord in securely 2. Turn motor switch to ON position 3. Warm up pump to 30°F & turn motor switch on 4. Line voltage must be within 10% of 115 volts
Pump won't pull deep vacuum	<ol style="list-style-type: none"> 1. Contaminated oil 2. Oil level too low 3. Air leak in system being evacuated 4. Pump inlet fittings missing or not tightened 5. Coupler slipping 	<ol style="list-style-type: none"> 1. Change oil 2. Add oil 3. Locate & repair leak(s) 4. Clean or replace O-ring 5. Tighten coupler setscrews to flats of cartridge and motor
Oil drips from point where shaft enters the pump housing	Damaged shaft seal	Replace
Pump shuts down and will not start	Thermal overload may be open	Disconnect pump from system. Wait about 15 minutes for motor to cool and turn it on again. If it cycles off again, return pump to factory for repair.
Pump cycles on and off from a completely cold start and then runs smoothly	Oil backed up into cartridge and was being cleared out. Pump has not been shutdown properly.	Remove 1/4" cap then turn pump on

ELIMINATOR® PUMP REPAIR PARTS

1	PR-1	Sight Glass
2	PR-2	Drain Valve
3	PR-10	DV-3E, DV-4E And DV-6E Cover Assembly Includes Sight Glass, Drain Valve, Oil Fill Plug
4 New	PR-403	DV-3E Cartridge Complete With O-Rings & Cover Seal
	PR-404	DV-4E Cartridge Complete With O-Rings & Cover Seal
	PR-406	DV-6E Cartridge Complete With O-Rings & Cover Seal
5 New	PR-217	Cover Seal
6	PR-3	Shaft Seal
7	PR-315	Trap Intake O-Ring
8	PR-208	Flexible Coupler
	PR-6	Flexible Coupler
	PR-77	Flexible Section only
9	PR-62	Pump Base (Includes Rubber Feet)
10	PR-59	Rubber Foot
Not Shown	PR-18	Cartridge Valve Repair Kit
11	PR-207	1/2 Hp, 115/230 V, 50/60 Hz Motor With Line Cord & Switch
	PR-206	1/2 Hp Motor With Line Cord & Switch
12	PR-31	Line Cord (Emerson Motor)
12 New	PR-58	Line Cord (Marathon Motor)
13	PR-54	Motor Switch, Rocker
14	PR-63	Intake Tee With Cap
15	NFT5-4	1/4" O-Ring Cap
16	NFT5-6	3/8" O-Ring Cap
17 Black	PR-500	3/8 Rubber grip & Cap
17 Hammertone	PR-501	1/2" Rubber grip & cap
18	PR-22	Oil Fill Plug With O-Ring
	PR-39	DV-3E Splash Guard w/Screw
19	PR-40	DV-4E & DV6E Splash Guard w/Screw
	PR-40	DV-4E & DV6E Splash Guard w/Screw
20 Black	DV-EP6	Tethered Safety Plug 3/8"
20 Hammertone	DV-EP8	Tethered Safety Plug 1/2"
21 Black	PR-205	Cushioned Handle 3/8" NPT
21 Hammertone	PR-65	Cushioned Handle 1/2" NPT

WARRANTY

Eliminator® pumps are warrantied against defects in materials and workmanship for 2 years. All JB products are guaranteed when used in accordance with our directions and recommendations, and we limit this warranty to the repair, replacement, or credit and invoice price (our option) of products which in our opinion are defective due to defects in workmanship and/or materials. In no case will we allow charges for labor, expense or consequential damage. Repairs performed on items out of warranty will be invoiced on a nominal basis. Contact your wholesaler for details.



JB INDUSTRIES INC.
Aurora IL 60505 USA
 Form 10346-308
 Printed in the USA
 ©2015 JB Industries, Inc.

Main Warehouse
JB INDUSTRIES, INC.
 PO Box 1180 Dept. 85
 Aurora, IL 60507-1180 USA
 sales@jbind.com
 Toll Free Technical Service #: 800.323.0811

CANADA
ALLTEMP products co., LTD.
 827 Brock Road South Pickering,
 Ont., Canada L1E 3J2
 Phone: 905.831.3311
 Fax: 905.831.1864