

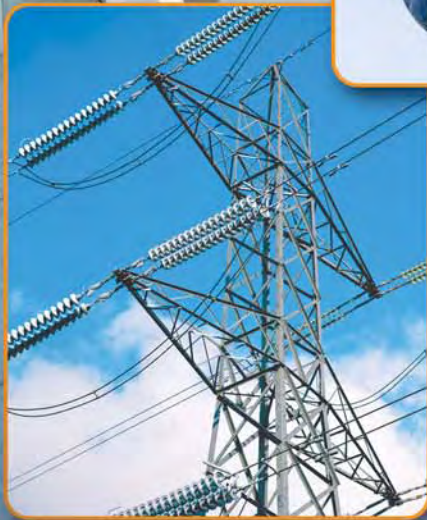
New!

Vi-Go™

Ladder Climbing Safety Systems

**Continuous fall protection
when climbing fixed ladders**

- Do-it-yourself kits for easy installation & inspection
- Easy one-hand attachment/detachment
- Select *Automatic* or *Manual* climbing design options
- Build your own system
– Cut cable lengths on site for greater versatility



MILLER®
by SPERIAN

New!

Vi-Go™ Ladder Climbing Safety Systems

New Vi-Go™ Ladder Climbing Safety Systems provide the ultimate in safety with continuous fall protection when climbing fixed ladders. Systems are available in easy-to-install kits or as a *build your own* option.

Vi-Go Ladder Climbing Safety Systems offer many unique advantages:

- **Lower cost of ownership** – Do-it-yourself kits for easy installation and inspection. No costly, annual manufacturer inspections often required by other systems.
- **Option to cut cable lengths on site** for greater versatility.
- **Accommodate up to four (4) workers at a time** – Increasing productivity.
- **Select *Automatic* or *Manual* Personal Fall Arrestor Cable Sleeves** – Both cable sleeves are designed to follow the user along the lifeline while ascending or descending, instantly locking in the event of a fall.



Vi-Go Automatic Pass-Through Cable Sleeve



Automatic Pass-Through Cable Guide

Vi-Go Continuous Ladder Climbing Safety Systems with Automatic Pass-Through

- **Uninterrupted fall protection** – Uniquely-designed, patent-pending Vi-Go Cable Sleeve automatically bypasses intermediate cable guides, keeping both hands free for climbing; travels smoothly along cable and locks instantly in the event of a fall.
- **Easy, one-hand operation** for attachment/detachment from the system. No pins/chains or external parts to lose or damage.
- **Automatic pass-through cable guides** secure lifeline to prevent cable wear and enable the system to accommodate curves.
- **Withstand harsh environments** – The Vi-Go Cable Sleeve is constructed with durable, corrosion-resistant aluminum and stainless steel components.
- **Attachment mechanism engineered to prevent incorrect installation**, ensuring greater safety. Unit will not open if attached incorrectly.
- **Cable sleeve integrated shock-absorbing element**
 - Provides a “dual shock-absorbing system” to further reduce fall forces. Protects the system and ladder from damage.
 - Once a fall occurs, the deployed shock absorber indicates the unit must be taken out of service.
- **Accommodate 5/16-inch (8mm) or 3/8-inch (10mm) cable.**

Vi-Go Ladder Climbing Safety Systems with Manual Pass-Through

- **Require manual removal/insertion** of cable with intermediate guides.
- **Cable guides secure lifeline** to prevent cable wear.
- **Manual Vi-Go Cable Sleeve follows the worker** while ascending and descending.
- **Cable sleeve locks instantly** in the event of a fall.
- **Accommodate 3/8-inch (10mm) cable.**



Manual Vi-Go Cable Sleeve with Carabiner



Manual Pass-Through Cable Guide

Vi-Go systems meet ANSI A14.3, OSHA 1926.502 and 1910.27, and CSA Z259.1-98 (Class AS) standards requirements.

INDUSTRY APPLICATIONS



- Power Transmission Towers
- Wind Energy
- Telecommunications Towers
- General Industry
- Petrochemical Plants
- Drilling Platforms
- Water Tanks/Towers
- Chimney Stacks
- Silos

Automatic Pass-Through Cable Guides

Vi-Go automatic pass-through cable sleeve glides easily through intermediate cable guides uninterrupted. Hands and feet are free for climbing.



Integrated stainless steel shock-absorbing element



Easy, one-hand attachment



Design prevents upside-down installation (channel will not open)

Vi-Go™ System Components

Dual Function Tensioner

- Prevents ladder rung deformation
- Indicates when the lifeline is properly adjusted for quick, easy installation and inspection



Top Bracket Shock Absorber

- Absorbs energy generated in the event of a fall
- Quick-link design for trouble-free cable installation



Vi-Go™ System Kits

Vi-Go Continuous Ladder Climbing Safety System with Automatic Pass-Through

Kits include a top bracket assembly with shock absorber, a bottom lifeline tensioner, 3/8-inch (10mm) galvanized steel cable lifeline, all automatic pass-through intermediate cable guides (when applicable).

SKU	Length of System	Number of Cable Guides
VG/30FT	30 ft. (9.1m)	0
VG/40FT	40 ft. (12.2m)	0
VG/50FT	50 ft. (15.2m)	1
VG/60FT	60 ft. (18.3m)	1
VG/70FT	70 ft. (21.3m)	1
VG/80FT	80 ft. (24.4m)	1



VGCS-SC

Vi-Go Automatic Pass-Through Cable Sleeve* Sold Separately

SKU	Description
VGCS	Automatic Pass-Through Cable Sleeve
VGCS-C	Automatic Pass-Through Cable Sleeve with carabiner
VGCS-SC	Automatic Pass-Through Cable Sleeve with integral swivel and carabiner

Vi-Go Ladder Climbing Safety System Kits with Manual Pass-Through

Kits include a top bracket assembly with shock absorber, a bottom 3/8-inch (10mm) galvanized steel cable lifeline, all necessary hardware, cable guides and instruction manual.

SKU	Length of System	Number of Cable Guides
TRS/50FT	50 ft. (15.2m)	1
TRS/60FT	60 ft. (18.3m)	1
TRS/70FT	70 ft. (21.3m)	1
TRS/80FT	80 ft. (24.4m)	1
TRS/90FT	90 ft. (27.4m)	2



TRCS-C

Vi-Go Manual Pass-Through Cable Sleeve* Sold Separately

SKU	Description
TRCS	Manual Pass-Through Cable Sleeve
TRCS-C	Manual Pass-Through Cable Sleeve with carabiner
TRCS-SC	Manual Pass-Through Cable Sleeve with integral swivel and carabiner

Build Your Own System For multiple system installations requiring cutting

On a job site, exact cable lengths may vary and pre-cut cable lengths may not be available.

The solution is to **Build Your Own System** by selecting the following components:

Top bracket assembly

Bottom bracket assembly

Vi-Go cable guides – continuous or manual

(Minimum one (1) required per 40-ft. (12.2m) length)¹

Fast-Attach Fitting for 3/8-inch (10mm) diameter galvanized steel cable

Cable

Vi-Go cable sleeve – automatic or manual

¹ According to ANSI A14.3, the maximum spacing between cable guides is 40 ft. (12.2m)

Vi-Go™ System Kits

Kits with longer cable lengths available

Vi-Go Continuous Ladder Climbing Safety System Kits with Automatic Pass-Through

Kits include a top bracket assembly with shock absorber, a bottom bracket assembly with lifeline tensioner, 3/8-inch (10mm) galvanized steel cable lifeline, all necessary hardware, automatic pass-through intermediate cable guides (when applicable) and instruction manual.



SKU	Length of System	Number of Cable Guides
VG/30FT	30 ft. (9.1m)	0
VG/40FT	40 ft. (12.2m)	0
VG/50FT	50 ft. (15.2m)	1
VG/60FT	60 ft. (18.3m)	1
VG/70FT	70 ft. (21.3m)	1
VG/80FT	80 ft. (24.4m)	1

SKU	Length of System	Number of Cable Guides
VG/90FT	90 ft. (27.4m)	2
VG/100FT	100 ft. (30.5m)	2
VG/110FT	110 ft. (33.5m)	2
VG/120FT	120 ft. (36.6m)	2
VG/130FT	130 ft. (39.6m)	3
VG/140FT	140 ft. (42.7m)	3



Vi-Go Automatic Pass-Through Cable Sleeve* Sold Separately

SKU	Description
VGCS	Automatic Pass-Through Cable Sleeve
VGCS-C	Automatic Pass-Through Cable Sleeve with carabiner
VGCS-SC	Automatic Pass-Through Cable Sleeve with integral swivel and carabiner

Other system kits are available in 10-ft. (3.0m) increments up to 300 ft. (91.4m), and then 50-ft. (15.2m) increments up to 500 ft. (152.4m) (e.g. To place an order for a Vi-Go system kit with 250-ft. (76.2m) length cable, the model number is VG/250FT)

***NOTE:** The Vi-Go Automatic Pass-Through Cable Sleeve can **ALSO** be used with the manual system.

Vi-Go Ladder Climbing Safety System Kits with Manual Pass-Through

Kits include a top bracket assembly with shock absorber, a bottom bracket assembly with lifeline tensioner, 3/8-inch (10mm) galvanized steel cable lifeline, all necessary hardware, manual pass-through intermediate cable guides and instruction manual.



SKU	Length of System	Number of Cable Guides
TRS/50FT	50 ft. (15.2m)	1
TRS/60FT	60 ft. (18.3m)	1
TRS/70FT	70 ft. (21.3m)	1
TRS/80FT	80 ft. (24.4m)	1
TRS/90FT	90 ft. (27.4m)	2

SKU	Length of System	Number of Cable Guides
TRS/100FT	100 ft. (30.5m)	2
TRS/110FT	110 ft. (33.5m)	2
TRS/120FT	120 ft. (36.6m)	2
TRS/130FT	130 ft. (39.6m)	3
TRS/140FT	140 ft. (42.7m)	3



Vi-Go Manual Pass-Through Cable Sleeve* Sold Separately

SKU	Description
TRCS	Manual Pass-Through Cable Sleeve
TRCS-C	Manual Pass-Through Cable Sleeve with carabiner
TRCS-SC	Manual Pass-Through Cable Sleeve with integral swivel and carabiner

Other system kits are available in 10-ft. (3.0m) increments up to 300 ft. (91.4m), and then 50-ft. (15.2m) increments up to 500 ft. (152.4m) (e.g. To place an order for a Vi-Go system kit with 250-ft. (76.2m) length cable, the model number is TRS/250FT)

***NOTE:** The Vi-Go Manual Pass-Through Cable Sleeve can **ONLY** be used with the manual system or systems without cable guides.

Build Your Own System

For multiple system installations requiring cutting cable on site

On a job site, exact cable lengths may vary and pre-cut cable length system kits will not meet installation requirements.

The solution is to **Build Your Own System** by selecting the following components:

Top bracket assembly

Bottom bracket assembly

Vi-Go cable guides – continuous or manual

(Minimum one (1) required per 40-ft. (12.2m) length)¹

Fast-Attach Fitting for 3/8-inch (10mm) diameter galvanized steel cable

Cable

Vi-Go cable sleeve – automatic or manual

e.g. To place an order for 22 Build Your Own Systems (100 ft. (30.5m)) with Vi-Go continuous pass-through guides and Vi-Go automatic cable sleeves:

SKU	Description	Qty.
TRTB	Standard top bracket assembly	22
TRBB	Standard bottom bracket assembly	22
VGCG	Automatic pass-through cable guide	44 ¹
VG-F-1	Fast-Attach Fitting for 3/8 inch (10mm) cable	22
VGC	Spool of 3/8-inch (10mm) galvanized cable	TBD
VGCS-SC	Automatic pass-through cable sleeve	1 per worker

¹ According to ANSI A14.3, the maximum spacing between cable guides is 40 ft. (12.2m)

Vi-Go™ System Components

Top Bracket Assembly

- Top Bracket Shock Absorber
- Quick-Link

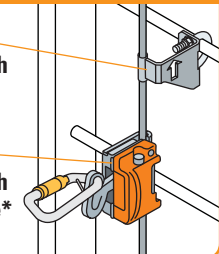
Cable (option to cut to required length)

Select from **TWO** Vi-Go pass-through systems:

Automatic Vi-Go System

Automatic Pass-Through Cable Guide

Automatic Pass-Through Cable Sleeve*

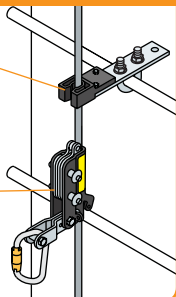


OR

Manual Vi-Go System

Manual Pass-Through Cable Guide

Manual Pass-Through Cable Sleeve



*NOTE: The Vi-Go Automatic Pass-Through Cable Sleeve can ALSO be used with the manual system.

Bottom Bracket Assembly

- Lifeline Tensioner

Build Your Own System Cable Options:

Vi-Go Cable Termination Options:



Pre-cut factory thimble swaging



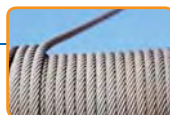
Fast-Attach Fittings
(enable cutting cable to length on site)



Thimble and cable clips

Cable Options:

- 3/8-inch (10mm) galvanized or stainless steel
- 5/16-inch (8mm) stainless steel



Vi-Go™ Brackets, Guides & Other Components

SKU	Description
TRTB	Standard 5-ft. (1.5m) top bracket assembly, bracket tube 1.5" x 1.5" (38.1mm x 38.1mm)
TRTB-7	7-ft. (2.1m) top bracket assembly for added extension above platform, bracket tube 2" x 2" (50.8mm x 50.8mm)
TRTB-10	10-ft. (3.0m) top bracket assembly for added extension above platform, bracket tube 2" x 2" (50.8mm x 50.8mm)
TRBB	Bottom bracket assembly
VGCG	Vi-Go automatic pass-through cable guide
TRCG	Vi-Go manual pass-through cable guide
VGC	Spool of 3/8-inch (10mm) galvanized cable
VGf-1	Fast-attach fitting for 3/8-inch (10mm) diameter cable
VGTCW	Vi-Go thimble & wire rope cable termination kit for 3/8-inch (10mm) diameter cable



Automatic Pass-Through Cable Guide (VGCG)



Manual Pass-Through Cable Guide (TRCG)

Application-Specific Components

The Vi-Go product offering includes specialty system components that meet the needs of a variety of applications.



Compact Ladder Bracket

- Attaches directly to rungs of the ladder
- Lightweight alternative to longer brackets when transferring onto upper platform is not required
- Available in galvanized or stainless steel



Universal Rung Clamp

- Attaches to pipe of various diameters, angular steel or flat steel structures
- Available in galvanized or stainless steel

These specialty components are available through Miller Engineered Solutions.

For more information, please call 800/325-6746.

Other Vertical Climbing Products

■ Soll GlideLoc® Fixed Rail Ladder Climbing System

Custom engineered as an integral component of a new fixed ladder system or retrofit to an existing fixed ladder.

- Transfer from vertical to horizontal track without disconnecting.
- Safe exit at top of rail system.
- Folding footrests provide resting platform.
- Available in aluminum, galvanized or stainless steel.

For more information, contact Miller Technical Service at 800/873-5242.



■ Miller Revolution™ Ladder Climbing Harness

Custom designed for applications in Power Transmission Towers, Wind Energy, Telecommunications Towers, and Oil/Gas.

For more information, contact Miller Technical Service at 800/873-5242.



This equipment should only be used after reading the manufacturer's instructions. Failure to follow instructions could result in serious injury or fatality.

MILLER
by SPERIAN

▶ Ask the Expert ... Ask Miller.

800/873-5242
or 814/432-2118

Fax 800/892-4078
or Fax 814/432-2415

www.millerfallprotection.com



For more information or to place an order, please contact your Miller® distributor:

LVGS/0908/30M/RPI