

# ENCLOSED & LETTER BOARDS

Indoor, Outdoor, Lighted, Custom, & Economical

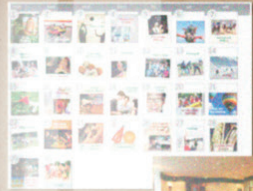


Showcasing what's important

What you have to say is important, and it needs to be secure. We have a wide selection of enclosed message centers for any environment or purpose. Indoor, Outdoor, Lighted, Custom, Designer, Economical. See for yourself why our enclosed message centers look nicer, perform better, and last longer.

### Quality is What Sets Us Apart

Our enclosed bulletin boards are superior when compared to alternatives. With American craftsmanship using premium materials for longevity, our enclosed boards stand the test of time. Go to [ghent.com/enclosedquality](http://ghent.com/enclosedquality) to learn more.



**A Taste of Italy**  
555-555-5555  
We Deliver All Day  
1120 W. 10th St., Ste 100  
100 English Square  
433 W. 10th St.  
Muncie, IN 47302

GOURMET PIZZA	
10" 12" 14"	\$12.99 \$14.99 \$17.99
16" 18" 20"	\$22.99 \$24.99 \$27.99
24" 28" 32"	\$39.99 \$42.99 \$45.99

WHITE PIZZAS	
10" 12" 14"	\$10.99 \$12.99 \$14.99
16" 18" 20"	\$19.99 \$21.99 \$23.99
24" 28" 32"	\$32.99 \$34.99 \$36.99

Specialty Pizzas	
10" 12" 14"	\$13.99 \$15.99 \$17.99
16" 18" 20"	\$24.99 \$26.99 \$28.99
24" 28" 32"	\$41.99 \$43.99 \$45.99

**Additional Toppings**

Pepperoni	\$1.50
Mushrooms	\$1.50
Onions	\$1.50
Spinach	\$1.50
Tomatoes	\$1.50
Black Olives	\$1.50
Green Peppers	\$1.50
Hot Sauce	\$1.50
Extra Cheese	\$1.50

FRIDAY & SATURDAY NIGHTS  
THE ONLY ORIGINAL  
**INDIE BAR\***  
FEATURING  
**DJ BIG STEVE**  
+ RESIDENTS  
www.BIGSTEVE.COM

POOL NIGHT  
7-10 PM  
\$5.00  
\$10.00  
\$15.00  
\$20.00  
\$25.00  
\$30.00  
\$35.00  
\$40.00  
\$45.00  
\$50.00



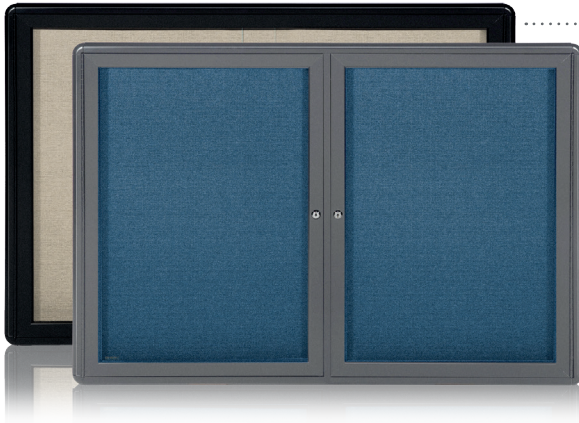
Indoor Enclosed Message Center.

## ENCLOSED BULLETIN BOARDS

### Silhouette (SILH)

Silhouette provides an upscale appearance for a wall-mounted enclosed bulletin board with a sleek, contemporary look that maximizes the viewing and display area.

- Unique size allows for nine letter-sized sheets of paper to be completely visible in the viewing area
- Unframed tempered glass door allows for full viewing of what is on display
- Can be mounted to open to either the left or the right
- Modular design allows the freedom to use one or multiple units side-by-side
- Frame options: Satin Aluminum, Wood-look Cherry, Light Maple and Black
- Size: 2.31' (w) x 3.51' (h) x 0.16' (d)



### Ovation (OVK & OVG)

Designer enclosed bulletin board with aluminum frame and radius corners.

- Enclosed bulletin boards feature stylish radius corners
- Powder-coated aluminum framing in Black (OVK) or Gray (OVG) matte finish
- Tack surface is fade-resistant and will hold up under the most demanding use
- Concealed corner brackets allow for easy and secure mounting
- Fabric available in Black, Gray, Merlot, Blue, or Beige
- Available with sliding or hinged doors; includes lock for added security
- Available in 1 (2' x 2.83'), 2 (3.92' x 2.83' or 5' x 3') and 3-door (6' x 4')



## INDOOR ENCLOSED BULLETIN BOARDS

### Cork (PA, PB, PW, PN & PWC)

Traditional enclosed cork bulletin board in a variety of frame options.

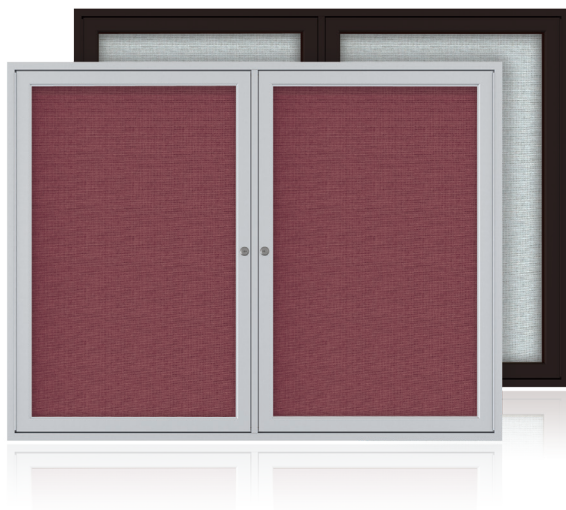
- Available in Satin Aluminum (PA), Bronze (PB), Natural Oak (PW), Walnut (PN), and Cherry Oak (PWC) framing
- Doors feature shatter-resistant acrylic panels
- Flush-mount locks for added security
- Self-healing natural cork surface will withstand repeated tacking
- Concealed corner brackets for easy and secure mounting
- Available in 1, 2 and 3-door options and tack or dry-erase surface



## Recycled Rubber (PA\_TR, PB\_TR, PW\_TR, PN\_TR & PWC\_TR)

Recycled Rubber enclosed bulletin board in a variety of frame options.

- Go “GREEN” – tack surface manufactured from 90% post-industrial material
- Available in Satin Aluminum (PA), Bronze (PB), Natural Oak (PW), Walnut (PN), and Cherry Oak (PWC) framing
- Self-healing recycled rubber tack surface hides pin holes
- Available in 3 tack surface colors – Black (BK), Confetti (CF), and Tan Speckled (TN)
- Doors feature shatter-resistant acrylic panels, flush-mount locks for added security
- Concealed corner brackets for easy and secure mounting
- Available in 1, 2 and 3-door options



## Fabric (PA\_F, PB\_F, PW\_F, PN\_F & PWC\_F) Vinyl (PA\_VX, PB\_VX, PW\_VX, PN\_VX & PWC\_VX)

Traditional enclosed bulletin board in a variety of frame options, featuring a vinyl or fabric tackable surface.

- Available in Satin Aluminum (PA), Bronze (PB), Natural Oak (PW), Walnut (PN) and Cherry Oak (PWC) framing
- Doors feature full-length hinges and shatter-resistant acrylic panels
- Flush-mount locks for added security
- Available in 5 fabrics & 10 vinyl tack surface colors
- Concealed corner brackets for easy and secure mounting
- Available in 1, 2 and 3-door options



## OUTDOOR ENCLOSED BULLETIN BOARDS

### Vinyl (PA\_VX & PB\_VX)

Outdoor vinyl enclosed bulletin board.

- Weather-resistant design to display and protect important information
- Frame available in Satin (PA) or Bronze (PB) finish anodized aluminum
- All units feature shatter-resistant acrylic doors
- Includes flush-mount locks for added security
- Concealed corner brackets for easy and secure mounting
- Available in 1, 2 and 3-door options and 10 color options (see page 62)



**NOTE:** For outdoor use, unit should be mounted under an awning or overhang

## CUSTOMIZED ENCLOSED



### Indoor Headliner (PAK & PBK)

Indoor cork enclosed bulletin board with customizable header.

- Frame available in Satin (PA) or Bronze (PB) finish anodized aluminum
- All units feature shatter-resistant acrylic doors
- Include flush-mount locks for added security
- Natural cork surface is self-healing and will withstand repeated tacking
- Lighted header panel option available
- Concealed corner brackets for easy and secure mounting
- Available in 1, 2 and 3-door options



### Outdoor Headliner (PA-VX & PB-VX)

Outdoor vinyl enclosed bulletin board with customizable header.

- Weather-resistant design to display and protect important information
- Frame available in Satin (PA) or Bronze (PB) finish anodized aluminum
- All units feature shatter-resistant acrylic doors
- Include flush-mount locks and 2 keys for added security
- Vinyl fabric tack surface with sealed back for outdoor use (available in 10 colors)
- Lighted header panel option available
- Available in 1, 2 and 3-door options



**NOTE:** For outdoor use, unit should be mounted under an awning or overhang



## LIGHTED ENCLOSED BULLETIN BOARDS

### Concealed Light (CPA)

- Concealed lighting to spotlight and attract attention to your display
- Satin-anodized aluminum frame
- Doors feature full-length hinges, shatter-resistant acrylic panels and flush-mount locks
- Self-healing natural cork surface will withstand repeated tacking
- Concealed corner brackets for easy and secure mounting
- Available in 1, 2 and 3-door options



## ENCLOSED LETTER BOARDS



### Indoor Letter Boards (PA\_B, PB\_B, PW\_B, PN\_B, PWC\_B)

- Available in Satin Aluminum (PA), Bronze (PB), Natural Oak (PW), Walnut (PN) and Cherry Oak (PWC) framing options
- Doors feature shatter-resistant acrylic panels
- Flush-mount locks for added security
- Black or Burgundy flannel letter panel – 1/4" precision grooves for easy letter insertion
- Set of 3/4" Gothic font white letters, numbers and characters (327 pieces included)
- Concealed corner brackets for easy and secure mounting
- Available in 1, 2 and 3-door options



### Outdoor Letter Board (PA\_BX & PB\_BX)

- Weather-resistant durable anodized aluminum frame in Bronze or Satin finish
- Doors feature shatter-resistant acrylic panels
- Flush-mount locks for added security
- Black or Burgundy vinyl letter panel with 1/4" precision grooves for easy letter insertion
- Set of 3/4" Gothic font white letters, numbers and characters (327 pieces included)
- Available in 1, 2 and 3-door options



**NOTE:** For outdoor use, unit should be mounted under an awning or overhang

## LETTER BOARDS



### Ovation (OVG & OVK)

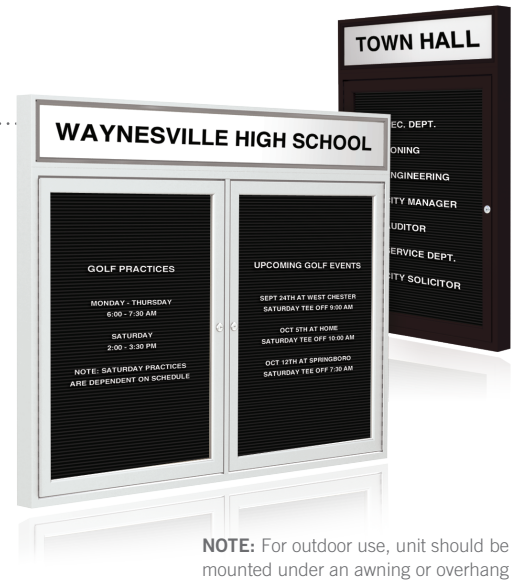
- Make changes easily and keep your message secure
- Detailed, stylish radius corners
- Frame is powder-coated aluminum available in Black (OVK) or Gray (OVG) matte finish
- Black or Burgundy flannel letter panel with 1/4" precision grooves for easy letter insertion
- Set of 3/4" Gothic font white letters, numbers and characters (327 pieces)
- Available with sliding or hinged doors; includes lock and key for added security
- Concealed corner brackets allow for easy and secure mounting



## CUSTOMIZED ENCLOSED LETTER BOARDS

### Headliner Letter Board (PAB & PBB)

- Aluminum frame available in Satin (PA) or Bronze (PB) finish
- Available in both indoor and outdoor models
- Doors feature full-length hinges, shatter-resistant acrylic panels and locks
- Black flannel (indoor) or vinyl (outdoor) letter panel with 1/4" precision grooves for easy letter insertion
- Set of 3/4" Gothic font white letters, numbers and characters (327 pieces included)
- 6" high opaque acrylic header panel, customized message, lighted option
- Concealed corner brackets for easy and secure mounting
- Available in 1, 2 and 3-door options



**NOTE:** For outdoor use, unit should be mounted under an awning or overhang

## PEDESTAL SIGNAGE

### Sentry Freestanding Message Center (ZPA & ZPB)

This message center is ideal for lobbies, hotels and conference centers.

- Frame available in Satin or Dark Bronze anodized aluminum
- Message center stands 2.67'(w) x 5.67'(h)
- Large letterboard 2.5'(w) x 3'(h), with locking acrylic door
- Black flannel board has 1/4" precision grooves for easy letter insertion
- Set of 3/4" Gothic font white letters, numbers and characters (327 pieces)





## Single Pedestal Message Center (PD)

- Stand features a weighted base for increased stability and security
- Pedestal letterboard adjusts in height from 4.08' to 4.67'
- Available with black plastic letter panel 2' x 1.5' and framed in Satin anodized aluminum
- Letter panel has 1/4" precision grooves for easy letter insertion and available with cork surfaces
- Includes set of 3/4" Gothic font white letters, numbers and characters (327 pieces)
- Ideal for lobbies, hallways and waiting areas



## Double Pedestal Letter Board (HPD)

Traditional pedestal signage with two legs and weighted base – perfect for high-traffic areas.

- Base is black powder-coated aluminum, legs are black powder-coated steel
- Pedestal letterboard stands 5' high
- Black flannel letter panel 2' x 1.5' is framed in Satin anodized aluminum
- Letter panel has 1/4" precision grooves for easy letter insertion
- Set of 3/4" Gothic font white letters, numbers, and characters (327 pieces)
- Available in open-face or acrylic-covered letterboard design

