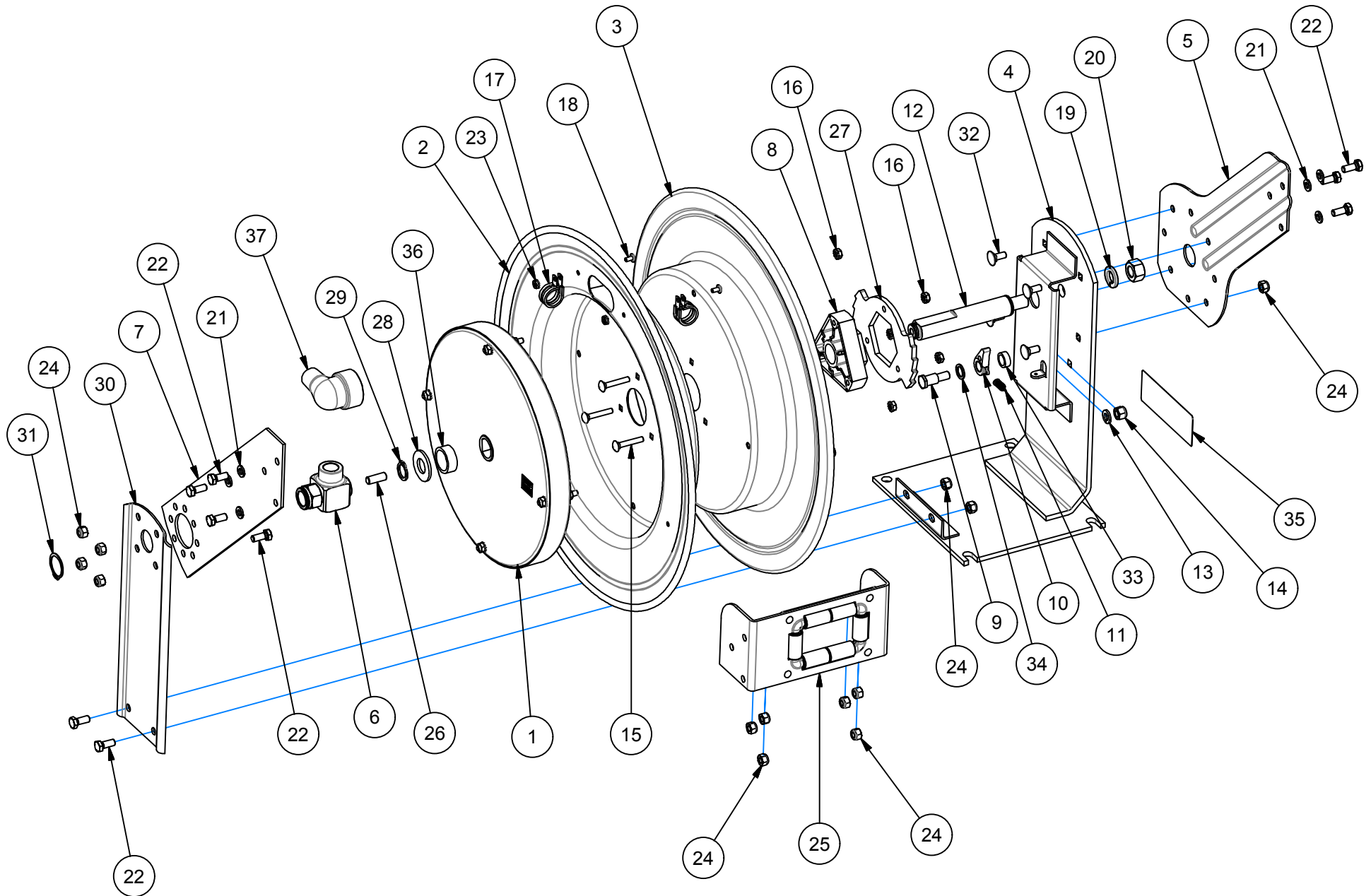


EXP-20SS

REVISION: E
ECO NO.: 3037
BY: M. ENGQUIST
DATE: 8/29/2014

COXREELS SERIES T STAINLESS STEEL



COMMON TO ALL T-SERIES STAINLESS STEEL REELS

DETAIL ITEM NO.	PART NO.	DESCRIPTION	TSHL-N-350-SS	TSHL-N-375-SS	TSHL-N-3100-SS	TSHL-N-450-SS	TSHL-N-475-SS	TSHL-N-4100-SS	TSHL-N-550-SS	TMPL-N-3100-SS	TMPL-N-4100-SS
1	656-SS	SPRING CAN, 15", SS	-	-	-	-	-	1	-	-	-
	657-SS	SPRING CAN, 15", SS	-	-	-	-	-	-	-	1	-
	658-SS	SPRING CAN, 15", SS	-	-	-	-	-	-	-	-	1
	690-2-SS	SPRING CAN, 12", SS	1	-	-	-	-	-	-	-	-
	691-3-SS	SPRING CAN, 12", SS	-	-	-	1	-	-	-	-	-
	692-1-SS	SPRING CAN, 15", SS	-	-	-	-	-	-	1	-	-
	692-2-SS	SPRING CAN, 15", SS	-	-	-	-	1	-	-	-	-
	698-1-SS	SPRING CAN, 15", SS	-	1	-	-	-	-	-	-	-
698-2-SS	SPRING CAN, 15", SS	-	-	1	-	-	-	-	-	-	
2	1703-SS	DISC, 19-1/2" X 2.25"W, W/SLOT, SS	1	-	-	1	-	-	-	-	-
	1705-SS	DISC, 24" X 2.25" W., W/SLOT, SS	-	1	1	-	1	1	1	1	1
3	1702-SS	DISC, 19-1/2" X 2.25"W., SS	1	-	-	1	-	-	-	-	-
	1704-SS	DISC, 24" X 2.25"W., SS	-	1	1	-	1	1	1	1	1
4	1784-SS	BASE, 19" T-REEL (ELECTRO-POLISH)	1	-	-	1	-	-	-	-	-
	1786-SS	BASE, 24" T-REEL (ELECTRO-POLISH)	-	1	1	-	1	1	1	1	1
5	1732-SS	ARM, GUIDE SS, 19" REEL (ELECTRO-POLISH)	1	-	-	1	-	-	-	-	-
	1733-SS	ARM, GUIDE SS, 24" REEL (ELECTRO-POLISH)	-	1	1	-	1	1	1	1	1
6	433-SS	SWIVEL, 3/4" NPT, CARBOXYLATED, SS	1	1	1	-	-	-	-	1	-
	426-SS	SWIVEL, 3/4" NPT, CARBOXYLATED, SS	-	-	-	-	-	-	1	-	-
	434-SS	SWIVEL, 1/2" NPT, CARBOXYLATED, SS	-	-	-	1	1	1	-	-	1
7	1825-SS	ARM, GUIDE, SECONDARY, 24" REEL (ELECTRO-POLISH)	-	1	1	-	1	1	1	1	1
	1827-SS	ARM, GUIDE, SECONDARY, 19" REEL (ELECTRO-POLISH)	1	-	-	1	-	-	-	-	-
8	1776-5	BEARING, HUB, 1" ID	1	1	1	1	1	1	1	1	1
9	1620-SS	BOLT, SHOULDER, 1/2"X1-1/2"SS	1	1	1	1	1	1	1	1	1
10	640-1-SS	LOCKING DOG, SS	1	1	1	1	1	1	1	1	1
11	274-1-SS	SPRING, TENSION, LOCKING DOG	1	1	1	1	1	1	1	1	1
12	1794-SS	AXLE, 1" OD, 1-1/2" SPRING CAN, SS	1	1	1	1	1	1	1	1	1
13	437-SS	WASHER, LOCK, 3/8 SS	1	1	1	1	1	1	1	1	1
14	435-SS	NUT, HEX, LOCK, 3/8-16, SS	1	1	1	1	1	1	1	1	1
15	1953-SS	BOLT, CARRIAGE, 1/4-20 X 1-1/2", SS	3	3	3	3	3	3	3	3	3
16	125-SS	NUT, KEPS, 1/4-20	7	7	7	7	7	7	7	7	7
17	381-SS	CLAMP, HOSE, #10, SS	2	2	2	-	-	-	-	2	-
	382-SS	CLAMP, HOSE, #14, SS	-	-	-	2	2	2	-	-	-
	383-SS	CLAMP, HOSE, #12, SS	-	-	-	-	-	-	-	-	2
	384-SS	CLAMP, HOSE, #18, SS	-	-	-	-	-	-	2	-	-
18	245-SS	SCREW, 10-32 X 3/8, TRUSS/PHP, SS	2	2	2	2	2	2	2	2	2
19	438-SS	WASHER, LOCK, 5/8", SS	1	1	1	1	1	1	1	1	1
20	3584-SS	NUT, HEX, 5/8-11, SS	1	1	1	1	1	1	1	1	1
21	112-SS	WASHER: 5/16" LOCK, SS	6	6	6	6	6	6	6	6	6
22	312-SS	BOLT, HEX, 5/16-18 X 3/4", SS	12	12	12	12	12	12	12	12	12
23	130-SS	NUT, KEPS, 10-32, SS	2	2	2	2	2	2	2	2	2
24	111-SS	NUT, LOCK, 5/16-18, SS NYLON ELEM	16	16	16	16	16	16	16	16	16
25	1829-1-SS	ROLLER BRACKET, T-REEL, SS (ASSY)	1	1	1	1	1	1	-	1	1
	8740-SS	ROLLER BRACKET ASSY., 1" SS	-	-	-	-	-	-	1	-	-
26	10235-SS	STUD, SS, 3/8-16 UNC-2A X 1"	1	1	1	1	1	1	1	1	1
27	1924-SS	LOCKING RING, SS	1	1	1	1	1	1	1	1	1
28	1755-1	WASHER, SPACER, HDPE, BLACK	1	1	1	1	1	1	1	1	1
29	1753-SS	RETAINING RING, SS (5160-75HSTB)	1	1	1	1	1	1	1	1	1
30	1712-SS	POST, SUPPORT, 3/4" SWVL, 24" REEL	-	-	-	-	-	-	1	-	-
	1740-SS	POST, SUPPORT, 3/8"-1/2" SWVL, 19" REEL	1	-	-	1	-	-	-	-	-
	1741-SS	POST, SUPPORT, 3/8"-1/2" SWVL, 24" REEL	-	1	1	-	1	1	-	1	1
31	1754-SS	RETAINING RING, SS (5100-112H)	1	1	1	1	1	1	-	1	1
	516-SS	RETAINING RING, SS (5100-137)	-	-	-	-	-	-	1	-	-
32	10220-75-SS	BOLT, CARRIAGE, 5/16-18 X 3/4", SS	4	4	4	4	4	4	4	4	4
33	6440-SS	WASHER, SPACER, .286" W., SS	1	1	1	1	1	1	1	1	1
34	6441-1	SPACER, WASHER, HDPE BLACK	1	1	1	1	1	1	1	1	1
35	10925-5	LABEL: STANDARD PRODUCT	1	1	1	1	1	1	1	1	1
36	7511	SPACER, AXLE	1	1	1	1	-	-	-	-	-
37	385-SS	ELBOW: 3/4" NPT STREET	-	-	-	-	-	-	1	-	-

REEL ASSEMBLY REPORTS: R101 (LATCHOUT REMOVAL), R101 (LOCKING RING PLACEMENT), R112 (TIGHTENING AND TORQUING)

REVISION: E ECO: 3037 DATE: 8/29/2014 NAME: M. ENGQUIST