

Kraftform Kompakt 60 RA, Imperial, 17pieces

Kraftform Kompakt Vario with Ratchet Function



EAN:	4013288155306	Size:	190x135x55 mm
Part number:	05051041001	Weight:	545 g
Article number:	KK 60 RA Imperial	Country of origin:	CZ
		Customs tariff number:	82079030

- Suitable for manual and power tool operations
- Smooth hard zones for high speed turning, soft grip zones for high torque transfer
- Ratchet function
- Fine-pitched teeth for small return angle; switchover ring (right, fixed, left)
- Maximum torque of up to 50 Newton metres

17-piece set with bits in a length of 89 mm in a practical pouch. 1 holder 816 RA Kraftform with ratchet function: fine-toothing for a small return angle, switchover ring (right, fixed, left), maximum torque of up to 50 Newton metres. 1/4" hexagon socket head take-up and Rapidaptor technology for low-fatigue working and rapid bit change; magnetic. Can also be used directly with a power tool.

Web link

https://products.wera.de/en/kraftform_kompakt_kraftform_kompakt_vario_with_ratchet_function_fine_tooth_system_for_precision_work_kk_60_ra_imperial.html

Wera - KK 60 RA Imperial
05051041001 - 4013288155306

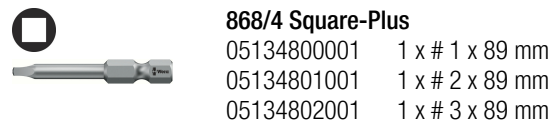
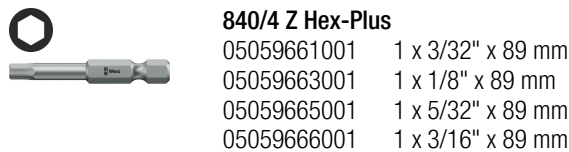
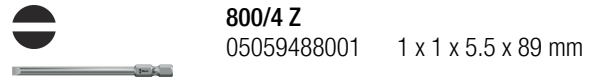
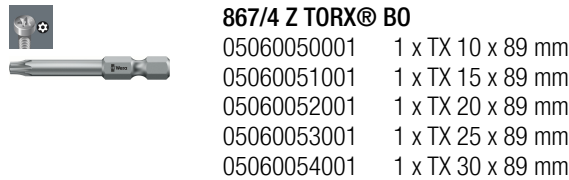
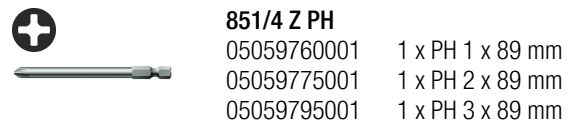
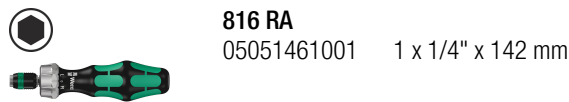
Wera Werkzeuge GmbH
Korzter Straße 21-25
D-42349 Wuppertal
Tel: +49 (0)2 02 / 40 45-0
E-Mail: info@wera.de

Kraftform Kompakt 60 RA, Imperial, 17pieces



Kraftform Kompakt Vario with Ratchet Function

Set contents:



816 RA Ratchet screwdriver

Handle/interchangeable blade system

Fine adjustment work

Changing ratchet direction



Ratchet screwdriver, fine-tooth design for minimal return angle, switchover ring (right, locked, left), maximum torque of up to 50 Newton metres, 1/4" hexagon chuck with Rapidaptor technology i.e. rapid-in, rapid-out, rapid-spin, chuck-all and single-hand function for rapid bit change, magnetic, suitable for hexagon socket insert bits as per DIN ISO 1173-C 6.3 and E 6.3 and Wera series 1 and 4

The handle/interchangeable blade system allows rapid exchange of the blades required for a wide range of applications.

Additionally, the lockable neutral position permits exact adjustment work without having to change the screwdriving direction every time. Lockable neutral position for fine adjustment work.

Ergonomic design of the reverse direction switch.

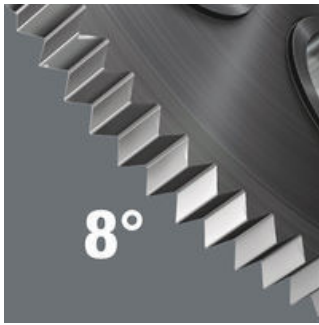
Web link

https://products.wera.de/en/kraftform_kompakt_kraftform_kompakt_vario_with_ratchet_function_fine_tooth_system_for_precision_work_kk_60_ra_imperial.html

Wera - KK 60 RA Imperial
05051041001 - 4013288155306

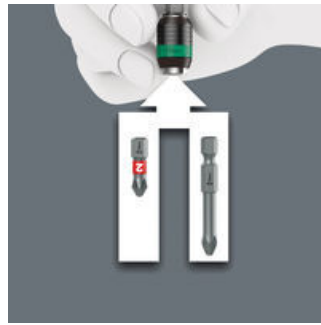
Wera Werkzeuge GmbH
Korzter Straße 21-25
D-42349 Wuppertal
Tel: +49 (0)2 02 / 40 45-0
E-Mail: info@wera.de

Fine-tooth design



Fine action 44 tooth system for precision work. Great time savings when screwdriving.

Chuck-all



The Rapidaptor quick-release chucks hold 1/4" DIN ISO 1173-C 6,3 and E 6,3 as well as Wera series 1 and 4 bits.

Rapid-in and self-lock



The bit can be pushed into the adaptor without moving the sleeve. The lock is activated automatically as soon as the bit is applied to the screw. Bits are held securely and wobble-free.

Rapid-out



Simply push the sleeve forward to change the bit. The spring mechanism lifts the bit off the magnet and unlocks the tool. The bit can be easily removed. The rapid-out function makes it easy to remove even the smallest bits without extra tools.

Web link

https://products.wera.de/en/kraftform_kompakt_kraftform_kompakt_vario_with_ratchet_function_fine_tooth_system_for_precision_work_kk_60_ra_imperial.html

Wera - KK 60 RA Imperial
05051041001 - 4013288155306

Wera Werkzeuge GmbH
Korzter Straße 21-25
D-42349 Wuppertal
Tel: +49 (0)2 02 / 40 45-0
E-Mail: info@wera.de