

Please read and save these instructions. Read carefully before attempting to assemble, install, operate or maintain the product described. Protect yourself and others by observing all safety information. Failure to comply with instructions could result in personal injury and/or property damage! Retain instructions for future reference.

Westward® Air Hydraulic Truck Jack

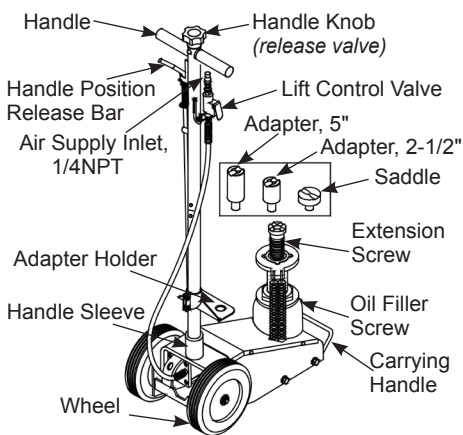
U.S. Patent No's.
5,341,723 • 5,946,912

Description

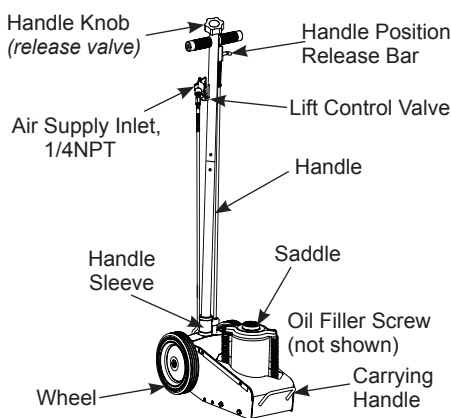
Westward Air Hydraulic Truck Jack provides quick, effortless lifts of rated capacity loads. This jack can be used for lifting automotive, low clearance bus, farm, industrial, and construction vehicles. After lifting, loads must be **immediately** supported by a pair of appropriately rated vehicle stands. This jack is **not appropriate** for use in lifting or positioning construction trailers, mobile homes, houses and/or other building structures. For air actuated use, ensure that air source can dedicate 7.8 CFM @ 110 - 175PSI to each jack operated. Check with vehicle manufacturer's owners manual for proper lift points.

Specifications

Model	Capacity	Min. Height	Max. Height	Extension Screw	Power Raise
13X030	22 Ton	8-1/2"	17"	3-7/8"	4-5/8"
13X031	30 Ton	11"	18"	N/A	7"



Model 13X030



Model 13X031

Figure 1 - Air Hydraulic Truck Jack Nomenclature

General Safety Information

▲ WARNING Study, understand, and follow all instructions and safety precautions provided with/on this product before use. Do not exceed rated capacity. This is a lifting device only! Remove the jack immediately after lifting, support the load with a pair of appropriately rated vehicle stands. Use only on hard, level surface. Lift only on areas of the vehicle as specified by the vehicle manufacturer. Never wire, clamp or otherwise disable the

lift control valve to function by other than operator's hand. Do not move or dolly the vehicle while on the jack. Inspect jack before each use. Do not use if bent, broken, leaking, or damaged components are noted. No alterations shall be made to this product. Never work on, under or around a load supported only by hydraulic jack. Do not use this device to lift, level, lower, support nor move a house, mobile home, travel trailer, camper or any building structure. Failure to follow these instructions and safety precautions may result in severe personal injury and/or property damage.

Assembly

1. Align and insert the handle and handle position release bar into the handle sleeve.
2. Tighten the bolt on handle sleeve to prevent accidental removal of handle while in use.

Before Use

1. Verify that the product and application are compatible.
2. Before using this product, read the instructions & parts manual completely and familiarize yourself thoroughly with the product, its components and recognize the hazards associated with its use.
3. To familiarize yourself with basic operation, locate and turn the release valve (handle):
 - a. Clockwise until firm resistance is felt to further turning. This is the 'CLOSED' release valve position used to **raise** the load.
 - b. Counter-clockwise, but no more than 1/2 turn from the closed position. This is the 'OPEN' release valve position used to **lower** the load. The more you turn the release valve counter-clockwise, the faster the load descends.
4. With ram fully lowered, remove the oil filler screw. This will help release any pressurized air which may be trapped within the reservoir. Check oil level. Proper oil level should be just below the rim of the opening. Reinstall the oil filler screw.

Westward® Air Hydraulic Truck Jack

Before Use (continued)

5. Pour a teaspoon of good quality, air tool lubricant into the air supply inlet of the lift control valve. Connect to air supply and operate for 3 seconds to evenly distribute lubricant.

Note: These models are equipped with the popular 1/4" NPT air coupler.

When installing a different air coupler of your choice, ensure that thread tape or compound is used when servicing connections. To ensure dependable, trouble free operation an inline air dryer and oiler is recommended.

6. Ensure that jack rolls freely. Raise and lower the unloaded ram throughout the lifting range before putting into service to ensure the pump operates smoothly. Replace worn or damaged parts and assemblies with factory authorized replacement parts only.

Bleeding / Venting Trapped Air

With the release valve in the OPEN position and with ram fully lowered, locate and remove the oil filler screw. This will help release any pressurized air which may be trapped within the reservoir. Reinstall the oil filler screw.

Operation

▲ WARNING Only attachments and/or adapters supplied by the manufacturer shall be used. Lift only on area of the vehicle as specified by the vehicle manufacturer. Never use hydraulic jack as a stand alone device! Always transfer the lifted load immediately to a pair of appropriately rated vehicle stands. Do not exceed rated capacity. The wheels provided with this jack are for positioning the jack under a load ONLY! The wheels are not load wheels. Do not try to dolly or move the vehicle with the jack!

LIFTING

NOTE: The jack is equipped with handle position lock. To adjust the handle, release lock device by pulling the lever up, lever is spring loaded and will lock into desired position. Ensure lever locking mechanism is fully engaged before leaving.

1. Connect adequate air source to the air supply inlet.
2. Follow the vehicle manufacturer's recommended guidelines for lifting. Engage the emergency brake and chock each unlifted wheel in both directions to prevent inadvertent vehicle movement.
3. Close the release valve by turning the handle knob clockwise until firm resistance is felt.
4. Center jack saddle under lift point, then squeeze the lift control valve until saddle contacts the lift point. To lift, continue squeezing the lift control valve until load reaches desired height. Simply release your grip on the lift control valve to end lift event.
5. Transfer the load **immediately** to a pair of appropriately rated vehicle stands.

LOWERING

▲ WARNING Be sure all tools and personnel are clear before lowering load. Slowly open the release valve! The more you turn the handle knob counter-clockwise, the faster the load will come down. Maintain control of the rate of speed at which the load lowers at all times!

1. Raise load high enough to clear the jack stands.
2. Remove jack stands carefully (always used in pairs).
3. **Slowly** turn handle knob counter-clockwise, but no more than 1 full turn.

If the load fails to lower:

 - a. Use another jack to raise the vehicle high enough to reinstall jack stands.
 - b. Remove the malfunctioning jack and then the jack stands.
 - c. Use the functioning jack to lower the vehicle.

4. After removing jack from under the vehicle, fully retract the jack to reduce ram exposure to rust and contamination.

Maintenance

IMPORTANT: Use only good grade hydraulic jack oil. Avoid mixing different types of fluid and NEVER use brake fluid, turbine oil, transmission fluid, motor oil or glycerin. Improper fluid can cause premature failure of the jack and the potential for sudden and immediate loss of load. We recommend Mobil DTE 13M or equivalent.

ADDING/CHANGING OIL

For best performance and longest life, replace the complete fluid supply at least once per year.

1. With saddle fully lowered remove cover plate, then oil filler screw.
2. Lay jack on its side and drain fluid into a suitable container.

NOTE: Dispose of hydraulic fluid in accordance with local regulations.
3. Set jack in its upright, level position.
4. Fill with oil until above the inner cylinder as seen from the oil filler hole. Reinstall the oil filler screw.

LUBRICATION

A periodic coating of light lubricating oil to pivot points, axles and hinges will help to prevent rust and assure that wheels move freely and the pump functions smoothly. To help ensure trouble free operation, an inline air dryer and oiler is recommended.

CLEANING

Periodically check the ram for signs of rust or corrosion. Clean as needed and wipe with an oily cloth.

Note: Never use sandpaper or abrasive material on ram surfaces!

STORAGE

When not in use, store the jack with saddle fully lowered.

Westward[®] Air Hydraulic Truck Jack

Troubleshooting Chart

Symptom	Possible Cause(s)	Corrective Action
Jack will not lift load	<ol style="list-style-type: none"> 1. Release valve not tightly closed 2. Load is too heavy 3. Air supply inadequate 	<ol style="list-style-type: none"> 1. Ensure release valve tightly closed 2. Consider higher capacity jack 3. ensure adequate air supply
Jack will lift, but not maintain pressure	<ol style="list-style-type: none"> 1. Release valve not tightly closed 2. Hydraulic unit malfunctioning 	<ol style="list-style-type: none"> 1. Ensure release valve tightly closed 2. Replace
Jack will not lower after unloading	<ol style="list-style-type: none"> 1. Reservoir overfilled 2. Linkages binding 3. Fluid level low 	<ol style="list-style-type: none"> 1. Drain fluid to proper level 2. Clean and lubricate moving parts 3. Ensure proper fluid level
Poor lift performance	<ol style="list-style-type: none"> 1. Fluid level low 2. Air trapped in system 	<ol style="list-style-type: none"> 1. Ensure proper fluid level 2. With ram fully retracted, remove oil filler screw to let pressurized air escape. Reinstall oil filler screw
Will not lift to full extension	Fluid level low	Ensure proper fluid level

For Repair Parts, call 1-800-323-0620
24 hours a day - 365 days a year

Please provide following information:

- Model number
- Serial number (if any)
- Part description and number as shown in parts list

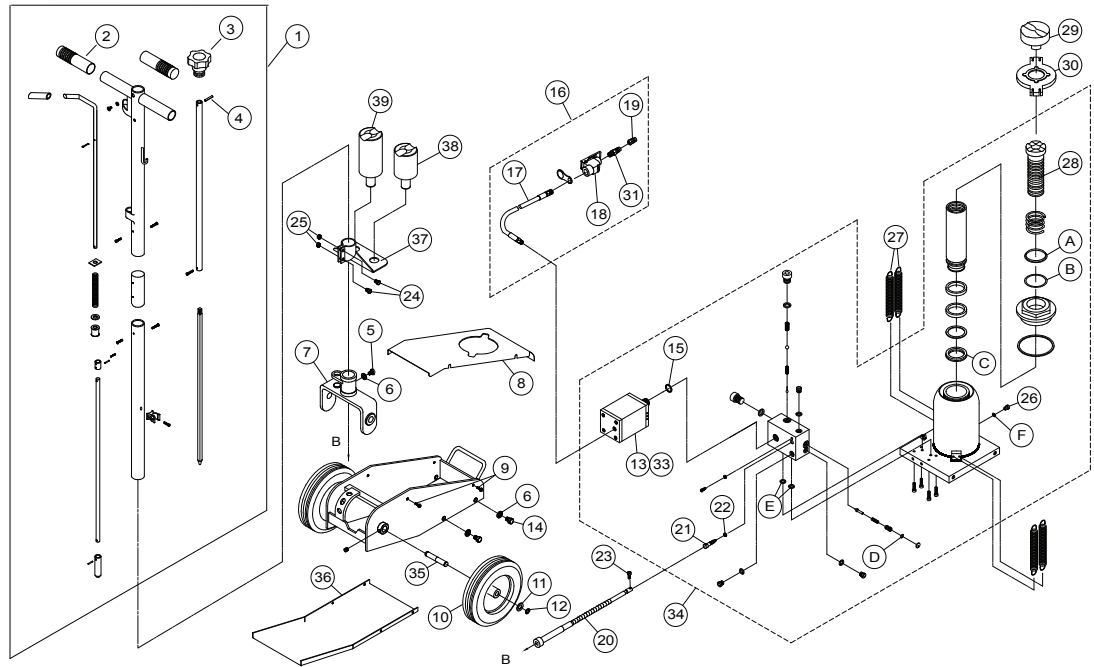


Figure 2 — Repair Parts Illustration for Model 13X030

Repair Parts List

Ref Number	Part Number	Description	Quantity	Ref Number	Part Number	Description	Quantity
1	A070-40000-000	Handle Assembly	1	21	A090-12008-000	Release Valve	1
2	G251-00007-000	Handle Grip	2	22	5905-00054-000	Oil Seal	1
3	G251-40001-000	Knob	1	23	5105-05016-000	Screw	1
4	5402-04028-000	Spring Pin	1	24	5102-08025-000	Screw	2
5	5115-10017-000	Bolt	1	25	5202-00008-000	Nut	2
6	5303-00010-100	Washer, Lock	5	26	G62S-03301-000	Filler Screw	1
7	A070-00006-000	Handle Sleeve	1	27	A091-00002-000	Spring	4
8	A090-00001-000	Cover Plate	1	28	A070-11001-000	Extension Screw	1
9	5110-06010-000	Screw	4	29	A070-00007-000	Saddle	1
10	A070-00001-000	Wheel	2	30	A070-00008-000	Spring Plate	1
11	5308-00013-006	Washer	2	31	A27010-0028	Air Filter	1
12	5304-00013-000	C-clip	2	32	A0901S-077	Repair Kit (includes #22 & A~F)	-
13	G831-03200-000	Air Motor	1	33	A27010-0008	Piston, Air Motor #13	1
14	5102-10025-000	Bolt	4	34	A091-10000-000	Hydraulic Unit	1
15	5308-00095-000	Copper Gasket	1	35	A070-00003-000	Wheel Axle	2
16	A220-01000-000	Air Hose Assembly	1	36	A090-00002-000	Base Plate	1
17	A20060-0006	Air Hose	1	37	A070-81001-000	Adapter Holder	1
18	A20060-0007	Lift Control Valve	1	38	A070-00015-000	Adapter, 2-1/2"	
19	A20060-0016	Air Coupler, Male, 1/4 NPT	1	39	A091-00003-000	Adapter, 5"	1
20	A070-30000-000	Release Valve Cable	1				

For Repair Parts, call 1-800-323-0620
24 hours a day - 365 days a year

Please provide following information:

- Model number
- Serial number (if any)
- Part description and number as shown in parts list

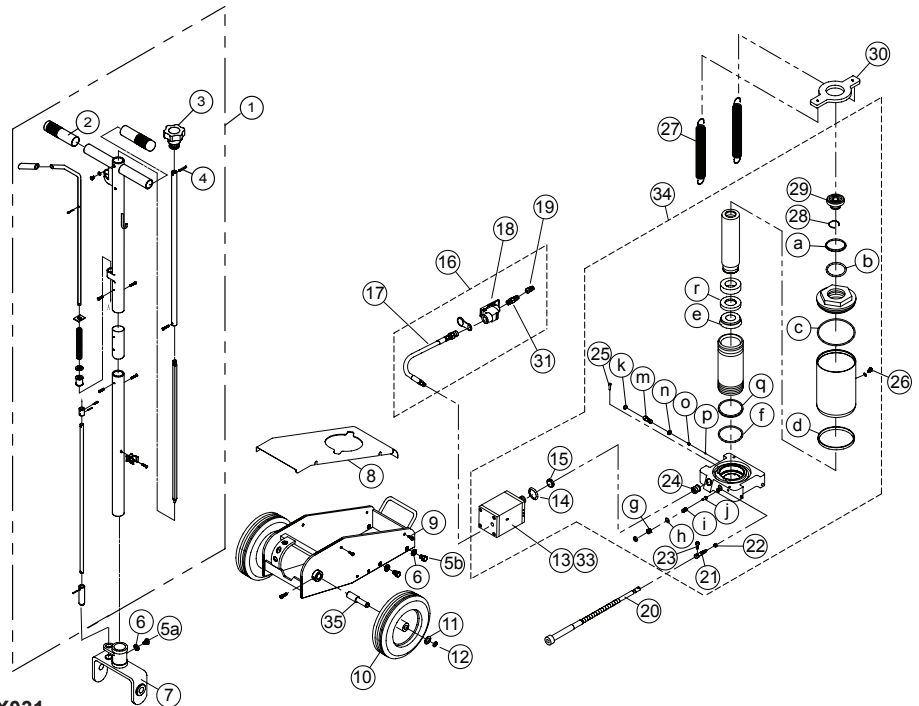


Figure 3 — Repair Parts Illustration for Model 13X031

Repair Parts List

Ref Number	Part Number	Description	Quantity	Ref Number	Part Number	Description	Quantity
1	A070-40000-000	Handle Assembly	1	19	A20060-0016	Air Coupler, Male, 1/4 NPT	1
2	G251-00007-000	Handle Grip	2	20	A070-30000-000	Release Valve Cable	1
3	G251-40001-000	Knob	1	21	A300-13001-000	Release Valve	1
4	5402-04028-000	Spring Pin	1	22	5905-00054-000	Oil Seal	1
5a	5115-10017-000	Bolt	1	23	5115-05012-000	Screw	1
5b	5102-10016-000	Bolt	4	24	BL80-15000-000	Hyd. Cartridge	1
6	5303-00010-000	Washer, Lock	5	25	B120-10003-000	Filter	1
7	A070-00006-000	Handle Sleeve	1	26	G62S-03301-000	Filler Screw	1
8	A300-00005-000	Cover Plate	1	27	A300-00003-000	Spring	2
9	5110-06010-000	Screw	4	28	5308-00380-000	Retaining Ring	1
10	A070-00001-000	Wheel	2	29	B300-10003-000	Saddle	1
11	5308-00013-000	Washer	2	30	A300-00004-000	Spring Plate	1
12	5304-00013-000	Retainer Clip	2	31	A27010-0028	Air Filter	1
13	A27010-0021	Air Motor & 14,15	1	32	A3001S-071	Repair Kit (includes #22, 26 & a-r)	-
14	A27010-0026	Washer	1	33	A27010-0008	Internal Piston, Air Motor	1
15	A27010-0027	Gasket	1	34	A300-10000-000	Hydraulic Unit	1
16	A20060-0005	Air Hose Assembly	1	35	A070-00003-000	Wheel Axle	2
17	A20060-0006	Air Hose	1				
18	A20060-0007	Lift Control Valve	1				

Westward® Air Hydraulic Truck Jack

LIMITED WARRANTY

WESTWARD ONE-YEAR LIMITED WARRANTY. Air Hydraulic Truck Jack, Models covered in this manual, is warranted by Westward to the original user against defects in workmanship or materials under normal use for one year after date of purchase. Any part which is determined to be defective in material or workmanship and returned to an authorized service location, as Westward designates, shipping costs prepaid, will be, as the exclusive remedy, repaired or replaced at Westward's option. For limited warranty claim procedures, see PROMPT DISPOSITION below. This limited warranty gives purchasers specific legal rights which vary from jurisdiction to jurisdiction.

LIMITATION OF LIABILITY. To the extent allowable under applicable law, Westward's liability for consequential and incidental damages is expressly disclaimed. Westward's liability in all events is limited to and shall not exceed the purchase price paid.

WARRANTY DISCLAIMER. Westward has made a diligent effort to provide product information and illustrate the products in this literature accurately; however, such information and illustrations are for the sole purpose of identification, and do not express or imply a warranty that the products are MERCHANTABLE, or FIT FOR A PARTICULAR PURPOSE, or that the products will necessarily conform to the illustrations or descriptions. Except as provided below, no warranty or affirmation of fact, expressed or implied, other than as stated in the "LIMITED WARRANTY" above is made or authorized by Westward.

PRODUCT SUITABILITY. Many jurisdictions have codes and regulations governing sales, construction, installation, and/or use of products for certain purposes, which may vary from those in neighboring areas. While Westward attempts to assure that its products comply with such codes, it cannot guarantee compliance, and cannot be responsible for how the product is installed or used. Before purchase and use of a product, review the product applications, and all applicable national and local codes and regulations, and be sure that the product, installation, and use will comply with them.

Certain aspects of disclaimers are not applicable to consumer products; e.g., (a) some jurisdictions do not allow the exclusion or limitation of incidental or consequential damages, so the above limitation or exclusion may not apply to you; (b) also, some jurisdictions do not allow a limitation on how long an implied warranty lasts, consequentially the above limitation may not apply to you; and (c) by law, during the period of this Limited Warranty, any implied warranties of implied merchantability or fitness for a particular purpose applicable to consumer products purchased by consumers, may not be excluded or otherwise disclaimed.

PROMPT DISPOSITION. Westward will make a good faith effort for prompt correction or other adjustment with respect to any product which proves to be defective within limited warranty. For any product believed to be defective within limited warranty, first write or call dealer from whom the product was purchased. Dealer will give additional directions. If unable to resolve satisfactorily, write to Westward at address below, giving dealer's name, address, date, and number of dealer's invoice, and describing the nature of the defect. Title and risk of loss pass to buyer on delivery to common carrier. If product was damaged in transit to you, file claim with carrier.

Manufactured for Grainger International, 100 Grainger Pkwy., Lake Forest, Illinois 60045 U.S.A.

Notes

Notes