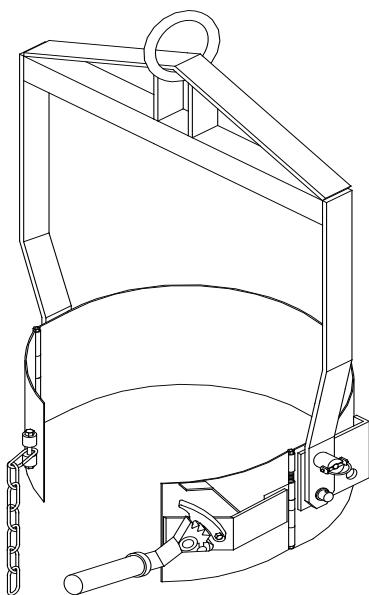
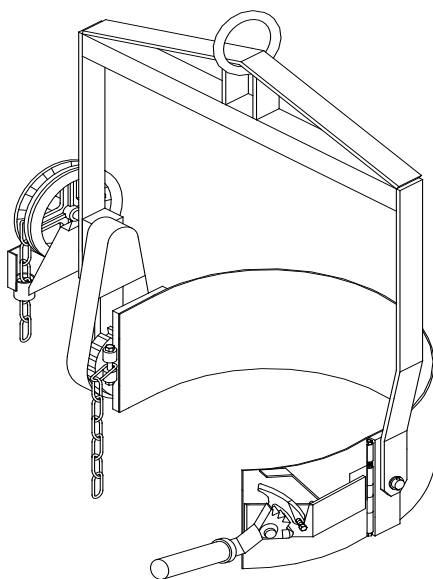


# Instruction Manual

## Vertical Drum Lifters/Dispensers



12R538



12R541

**Note:** Please read and save these instructions. Read carefully before attempting to assemble, install, operate or maintain this product.

Failure to comply with these instructions could result in personal injury and/or property damage!

# Content

	Page
Figure and Specification.....	2
Part Name.....	4
Warning.....	4
Options .....	4
Operation Instructions.....	5
Maintenance .....	5
Exploded View & Part List.....	6

Thank you for choosing these drum lifters. For your safety and to ensure proper operation, please carefully read these instructions.

**NOTE:** All the information reported herein is based on data available at the moment of printing. The factory reserves the right to modify its own products at any moment without notice and incurring in any sanction. So it is suggested to always verify possible updates.

## 1. FIGURE AND SPECIFICATION

### Manual Type 12R538

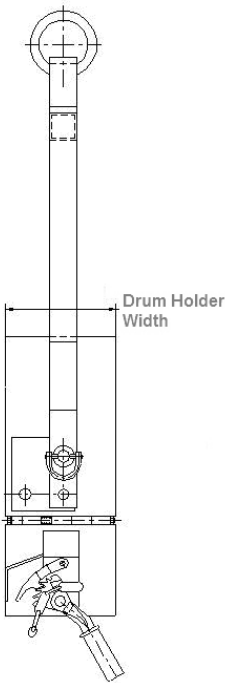


Figure 1

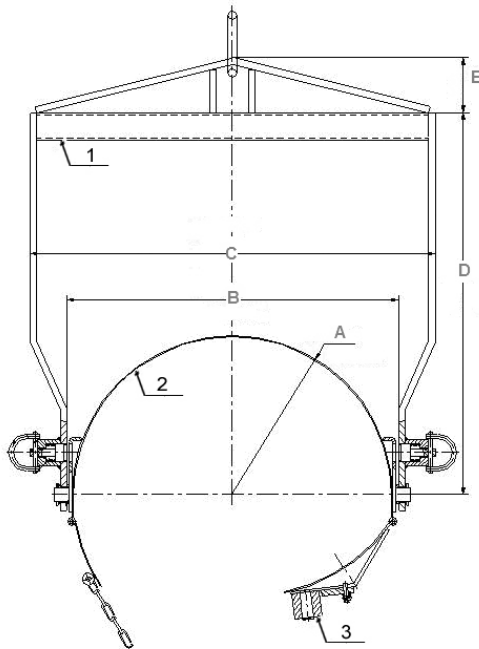


Figure 2

# Geared Type 12R541

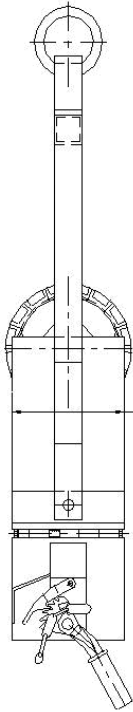


Figure 3

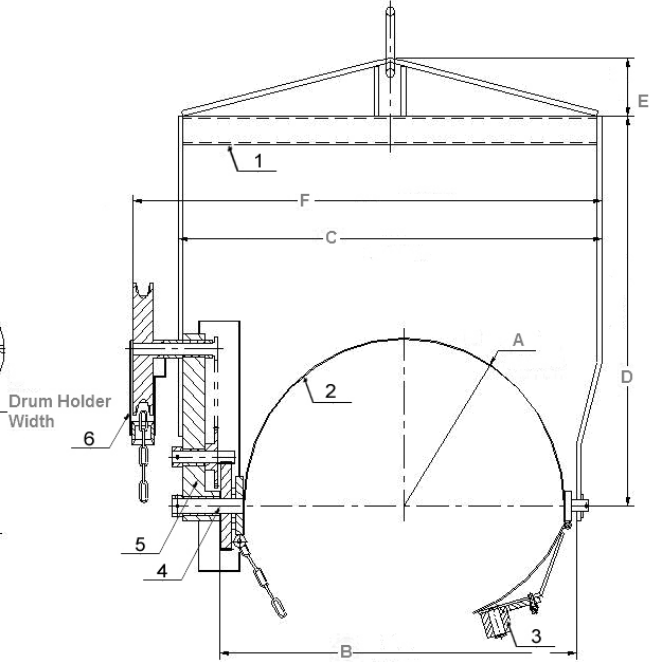


Figure 4

## Specification

Model	A (In)	B (In)	C (In)	D (In)	E (In)	Net Weight (Lbs)	Capacity* (Lbs)
12R538	11-1/4	23-1/2	27	26	3-1/2	44	800
12R541	11-1/4	26	30	26	3-1/2	99	800

Drum holder width is 7-7/8 in

For 12R541, F=33 In

\*: Capacity load for full drum is 800 lbs; capacity for half full drum is 500 lbs.

## **2. PART NAMES**

**(See Fig. 2 & 4 on previous pages)**

- (1) Lifter frame
- (2) Drum holder
- (3) Clamp
- (4) Rotator assembly
- (5) Geared driver assembly
- (6) Chain wheel

## **3. WARNING**

- (1) The 12R538 and 12R541 are intended for use with 55 gallon steel drum only. Do not attempt to use with plastic drums. For fiber drums, order and install the 4W966 (FBA adapter) option.
- (2) Do not overload this drum lifter beyond its rated capacity; drum must be clamped at the center position to avoid causing damage.
- (3) Do not stand under the drum lifter or when it is moving.
- (4) Do not operate if something is damaged on the drum lifter.
- (5) Load Rating: Capacity is 800 lbs. for a full drum; 500 lbs. for a half full drum.
- (6) Never move the unit unless the drum is firmly secured in drum holder.  
(See Fig. 5, #22 or Fig. 6, #15)
- (7) Transport with to the drum in vertical position only.
- (8) Periodically inspect for damages and loose or missing hardware. If required, remove from service and repair.

## **4. OPTIONS**

If you intend to handle fiber drums, refer to instructions for optional 4W966 (FBA adapter). Do not use the 12R538 and 12R541 for fiber drums without the option.

## 5. OPERATING INSTRUCTIONS

- (1) Enclose the lifter ring (See Fig.5 & 6 Ring) onto the crane or hoist hook. Position the drum lifter along side the drum and confirm that it is safely attached to the hook.
- (2) Attach the drum holder (See Fig. 5, #22 or Fig. 6, #15) around the drum near the top and buckle the chain (See Fig. 5 #11 or Fig. 6 #16.) to the geared spanner groove (See Fig. 5 & 6, #2) and turn the spanner to securely clamp the drum to the drum holder. Inspect the clamp to make certain it is tight.
- (3) Ensure that the lifter ring (See Fig. 5 & 6 Ring) on the 12R538/12R541 is connected to the crane or hoist hook with a self-locking device before lifting the drum.
- (4) Raise the drum lifter slightly off the ground and re-inspect the clamp to make certain it is secure and tight. Then continue to raise the drum to the desired height. Carefully move the drum lifter to desired location. Drum can be transported to location for pouring.  
To turn the drum for pouring, the 12R538 can be turned by hand. Pull down on the chain in the chain wheel (See Fig. 6, #30) the 12R541.  
Note: The 12R538 has a lock-pin (See Fig. 5 #20) that should be slipped off before the drum can be tilted 0~90° for pouring.
- (5) When finished using the drum, it should be returned to the vertical position and re-clamped and lowered to the floor or pallet. Turn the geared spanner (See Fig. 5 & 6, #2) towards the clamp while loosening the connection of the geared pawl (See Fig. 5 & 6, #6). When the chain releases the drum can be taken out.

## 6. Maintenance

- (1) Lubricate moving parts periodically.
- (2) Check bolts and nuts frequently for tightness.

# 7. EXPLODED VIEW & PART LIST

12R538

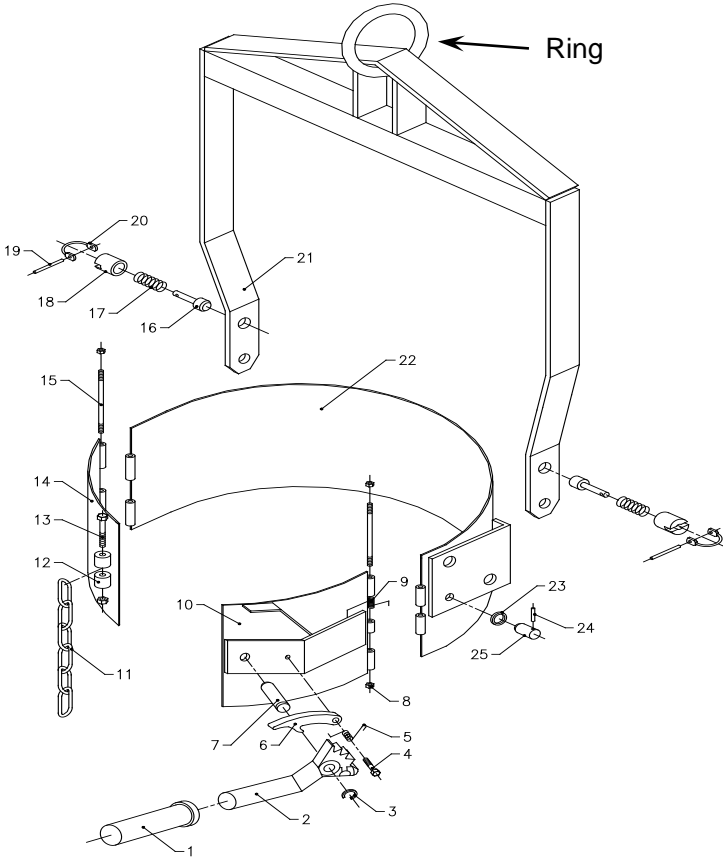


Figure 5

<b>No</b>	<b>Description</b>	<b>Qty</b>	<b>No.</b>	<b>Description</b>	<b>Qty</b>
1	Rubber Bushing	1	14	Connecting Board	1
2	Geared Spanner	1	15	Pin	2
3	Retaining Ring	1	16	Locating Pin	2
4	Hexagon Bolt	1	17	Spring	2
5	Spring	1	18	Welding Chassis	2
6	Pawl	1	19	Pull ring	2
7	Pin	1	20	Lock-Pin	2
8	Nut	2	21	Lift Assembly	1
9	Spring	1	22	Drum Holder	1
10	Clamping Board	1	23	Clamped Ring	2
11	Chain	1	24	Spring	2
12	Connecting Ring	2	25	Pin	2
13	Bolt	1			



12R541

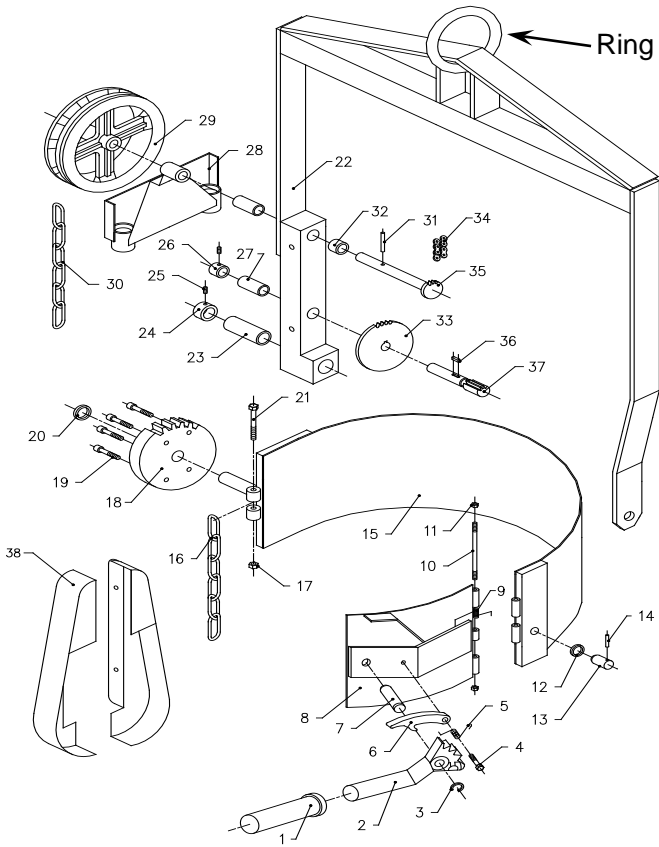


Figure 6

<b>No.</b>	<b>Description</b>	<b>Qty</b>	<b>No.</b>	<b>Description</b>	<b>Qty</b>
1	Rubber Bushing	1	21	Bolt	2
2	Geared Spanner	1	22	Lift	1
3	Shaft Washer	1	23	Bush	1
4	Hexagonal Bolt	1	24	Aligning Ring	1
5	Spring	1	25	Aligning Bolt	2
6	Pawl	1	26	Aligning Ring	1
7	Pin	1	27	Bush	1
8	Clamped Board	1	28	Chain Guideway	1
9	Spring	1	29	Chain Wheel	1
10	Pin	1	30	Chain	1
11	Nut	2	31	Aligning Pin	1
12	Clamped Ring	1	32	Clamped Ring	1
13	Pin	1	33	Chain Wheel	1
14	Spring	1	34	Chain	1
15	Drum Holder	1	35	Chain Wheel Axis	1
16	Chain	1	36	Plane Key	1
17	Nut	1	37	Geared Axis	1
18	Gear	1	38	Chain cover	2
19	Bolt	4			
20	Clamped Ring	1			