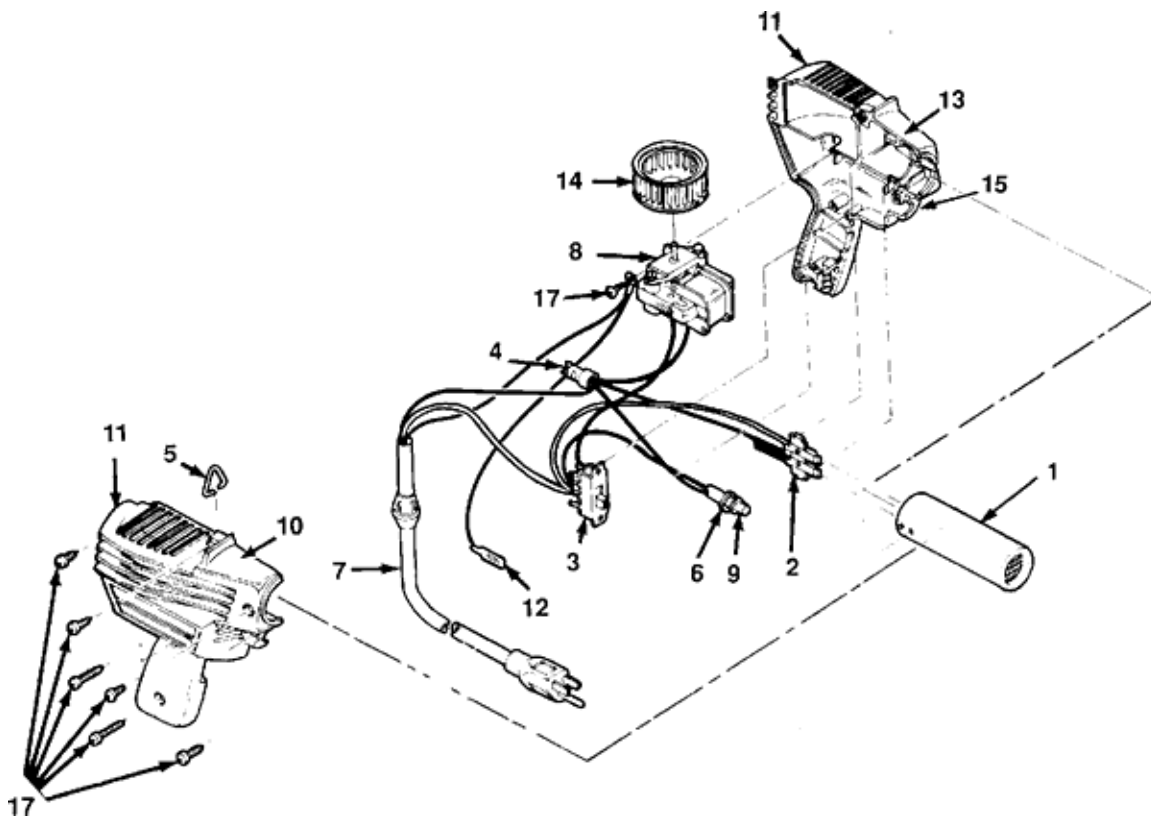


MASTER-MITE HEAT GUN PARTS BREAKDOWN



MASTER-MITE REPLACEMENT PARTS

<u>ITEM #</u>	<u>WWG #</u>	<u>MODEL #</u>	<u>DESCRIPTION</u>
1	25WA05	20012	ELEMENT, 120V, 500°F, 340W (BLUE)
1	25WE01	20013	ELEMENT, 120V, 650°F, 475W (SILVER)
1	25WC04	20014	ELEMENT, 120V, 800°F, 525W (BLACK)
1	25WA06	20033	ELEMENT, 220V, 500°F, 400W (BLUE)
1	25WA07	20034	ELEMENT, 220V, 650°F, 450W (SILVER)
1	25WC53	20035	ELEMENT, 220V, 800°F, 500W (BLACK)
1	25WA08	20160	ELEMENT, 240V, 500°F, 400W (BLUE)
1	25WA09	20161	ELEMENT, 240V, 650°F, 450W (SILVER)
1	25WA10	20162	ELEMENT, 240V, 800°F, 500W (BLACK)

MASTER-MITE REPLACEMENT PARTS (PG. 2)

<u>ITEM #</u>	<u>WWG #</u>	<u>MODEL #</u>	<u>DESCRIPTION</u>
2	25WC11	30018	SPRING CLIP ASSEMBLY, WITH THERMOSTAT
3	N/A	35234	SWITCH, ROCKER
4	25WA15	50041	CLOSED END SPLICE
5	25WA16	50163	HANGING LOOP
6	25WA17	50167	RING, RETAINING
7	25WA18	50175	CORDSET, 120V, 3-WIRE
7	25WA22	50218	CORDSET, 220V, USA
8	25WA19	50179	MOTOR, 120V, 60HZ, W/MOUNTING BRACKET
8	25WA21	50217	MOTOR, 220V, W/MOUNTING BRACKET
9	25WA20	50183	LIGHT, 120V, W/RETAINING RING
9	25WA23	50220	LIGHT, 220V, W/RETAINING RING
10	25WD37	35273	LABELS, FOR HOUSING 10008
10	25WD66	35274	LABELS, FOR HOUSING, 10009
10	25WD67	35275	LABELS, FOR HOUSING, 10010
10	25WA24	50341	LABEL, WARNING, ENGLISH
11	25WA27	50703	HOUSING, RED (2 HALVES)
11	N/A	35424	HOUSING, BLACK ESD (2 HALVES)
12	25WA29	50750	GROUND TAB
14	25WC09	51277	BLOWER WHEEL
15	25WA37	51411	LABEL, WARNING (ALL MODELS)
17	25WA88	80061	SCREW, HOUSING (KIT OF 7)

MASTER-MITE ACCESSORIES

<u>UPC #</u>	<u>WWG #</u>	<u>DESCRIPTION</u>
25WA11	30201	ATTACHMENT, SOLDER PREFORM
25WA13	40060	ATTANCMENT, HEAT SHRINK UP TO 1" O.D. (STD)
25WA14	40061	ATTACHMENT, 1/4" PINPOINT
25WA25	50675	BENCH STAND (STD)